

1



Coding system model L

301...799	-	1	L	12	C	E	10	F	V	2	B
***		*	**	**	*	*	*	*	**	**	*

***	*	**	*	**	*	**	*	**	**	**	*
Code	Type	Model	pump flow rate at 1500 RPM at 0 bar	Rotation sense	Shaft form	Fixinge flange	Port connection form	Alternatives with valves	Relief valve pressure	Tank capacity	

***	-	*	**	**	*	*	*	**	**	*
-----	---	---	----	----	---	---	---	----	----	---

301....799	Code
------------	------

1	Without pulley
2	With pulley
5	Pump with back-up bearing and floating shaft

L	Single	
LM	Multiple -banked	L+L
LS	Multiple -banked	L+L0

L	6-7.5-9-10-12-14-16-18 -22-25-27-32-35-40-46-52
---	--

C	Clockwise
CC	Counterclockwise
R	Reversible

L	A-B-C-D-E-F-G-H-I-J-K-N-R-S-T V-W-Y-Z
---	--

Pulley type	
L	P-R-S-T

L	01-02-03-04-05-07-08-09-10-11-12 13-14-15-16-17-18-19-21-22-23-24-25 27-28-30-32-33-36-37-38-39-40-41 42-45-46-47-50-51-52-53-55-85-86
---	---

L	A	Sin
	B	1.5
	C	2.5
	D	3.8

L	Adjustable pre-set	1	5 to 80bar
		2	80 to 175bar
		3	175 to 250bar
	Adjustable pre-set	11	5 to 80bar
		12	80 to 175bar
		13	175 to 250bar

L	V	Relief valve
	VD	R.valve and tank
	VC	Flow control valve with rel. valve
	VCD	Flow control valve with rel. valve and tank
	Rc	Priority flow valve

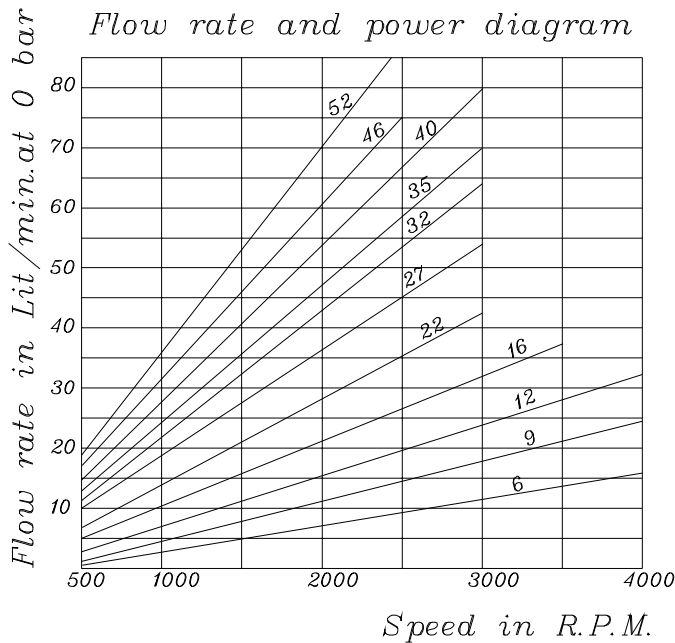
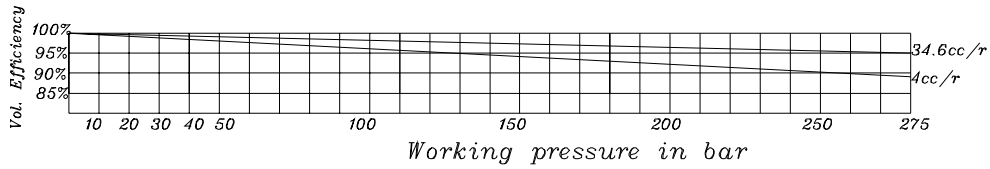
L	T-R-F-B-Etc.
	T R F B



General specification model L
Hydraulic technical data Gear Pump Type-L

Pump Flow RATE (L/Min) at 1500 R.P.M	6	9	12	16	22	27	32	35	40	46	52
DISPLACEMENT (cc/rev)	4	6	8	10.6	14.6	18	21.3	23.3	26.6	30.6	34.6
Cont .MAX.PRESSURE (bar)	275			250	225	175			145	135	120
INTERMITENT MAX. PRESSURE (bar)	300			275	250	190			160	150	140
R.P.M AT CONT.PRESSURE	3500			3000	2500	2300	2000			2000	
MAX. R.P.M	4000			3500		3200	3000			3000	
MIN. R.P.M AT GIVEN PRESSURES	100bar	500									
	175bar	1200	1100	1100	850	850	750			750	
	250bar	1400		1300	1200	1100	1100			1000	
	300bar	1750		1500	+	+	+	+	+	+	+

Volumetric efficiencies diagram at 1500 R.P.M



NOTE : The results have been obtained with 4.5^o E viscosity oil and at 50^o C



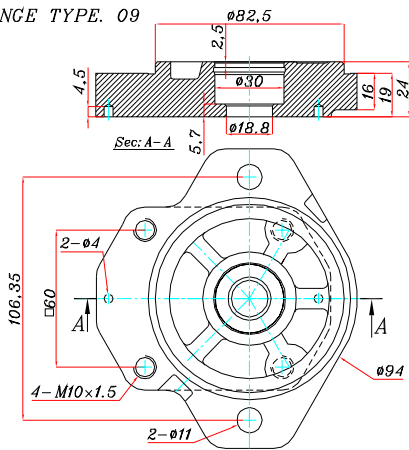
General specification model L

<i>Pump flow rate at 1500 RPM at 0 bar</i>	<i>Max. Pressure (bar)</i>	<i>Max. Speed (RPM)</i>	<i>Min. Speed (RPM)</i>
<i>1L 6</i>	<i>300</i>	<i>4000</i>	<i>500</i>
<i>1L 7.5</i>	<i>300</i>	<i>4000</i>	<i>500</i>
<i>1L 9</i>	<i>300</i>	<i>4000</i>	<i>500</i>
<i>1L 10.5</i>	<i>300</i>	<i>4000</i>	<i>500</i>
<i>1L 12</i>	<i>300</i>	<i>4000</i>	<i>500</i>
<i>1L 14</i>	<i>300</i>	<i>4000</i>	<i>500</i>
<i>1L 16</i>	<i>300</i>	<i>3500</i>	<i>500</i>
<i>1L 18</i>	<i>300</i>	<i>3500</i>	<i>500</i>
<i>1L 22</i>	<i>250</i>	<i>2500</i>	<i>500</i>
<i>1L 25</i>	<i>250</i>	<i>3200</i>	<i>500</i>
<i>1L 27</i>	<i>250</i>	<i>3200</i>	<i>500</i>
<i>1L 32</i>	<i>190</i>	<i>3000</i>	<i>500</i>
<i>1L 35</i>	<i>190</i>	<i>3000</i>	<i>500</i>
<i>1L 40</i>	<i>160</i>	<i>3000</i>	<i>500</i>
<i>1L 46</i>	<i>150</i>	<i>3000</i>	<i>500</i>
<i>1L 52</i>	<i>140</i>	<i>3000</i>	<i>500</i>

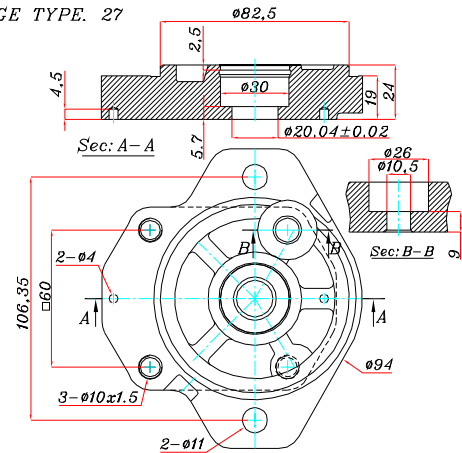


Flange type model L

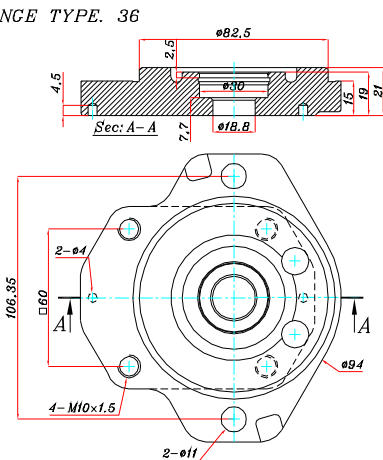
FLANGE TYPE. 09



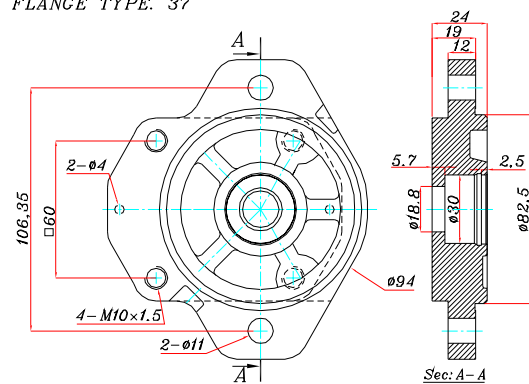
FLANGE TYPE. 27



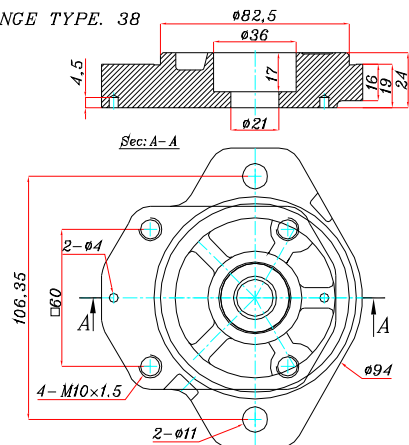
FLANGE TYPE. 36



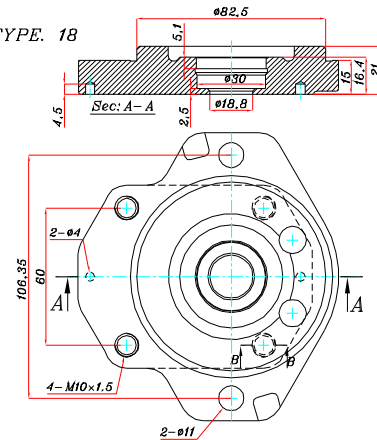
FLANGE TYPE. 37



FLANGE TYPE. 38



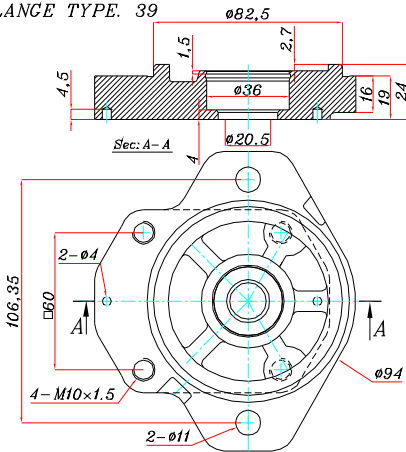
FLANGE TYPE. 18



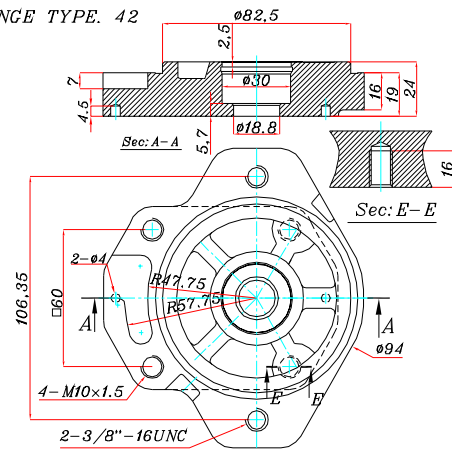


Flange type model L

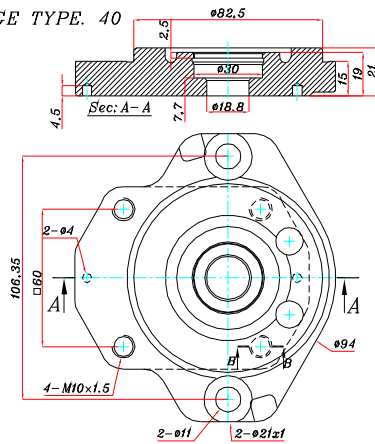
FLANGE TYPE. 39



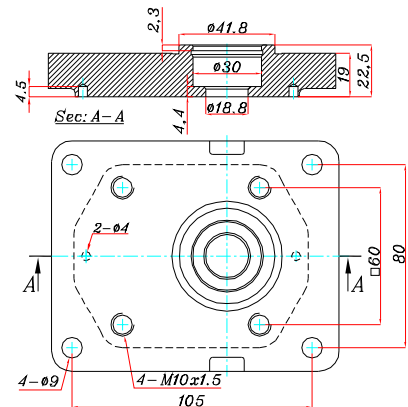
FLANGE TYPE. 42



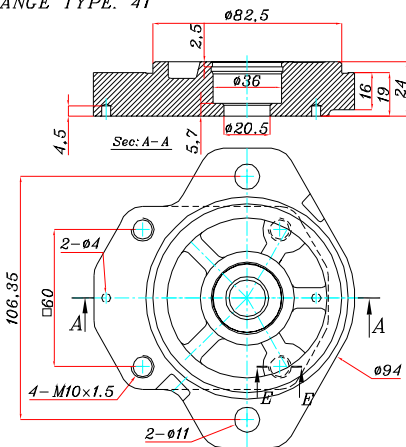
FLANGE TYPE. 40



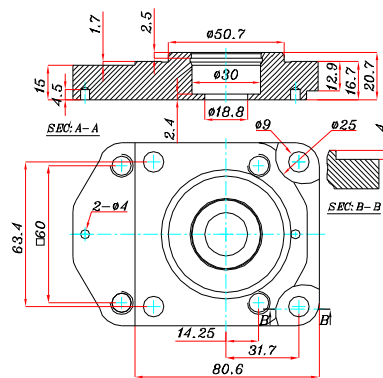
FLANGE TYPE. 24



FLANGE TYPE. 41



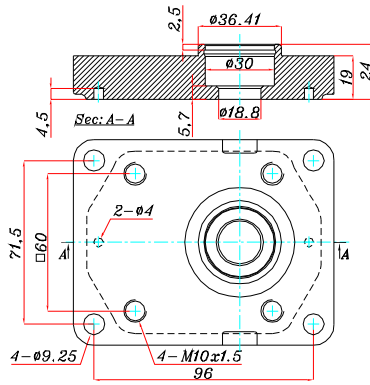
FLANGE TYPE. 02



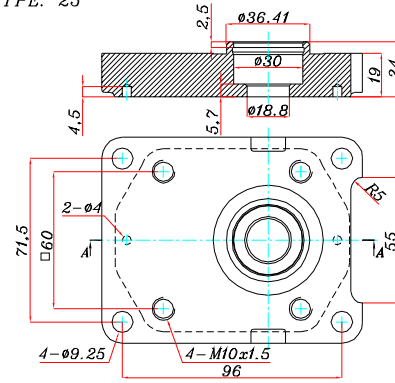


Flange type model L

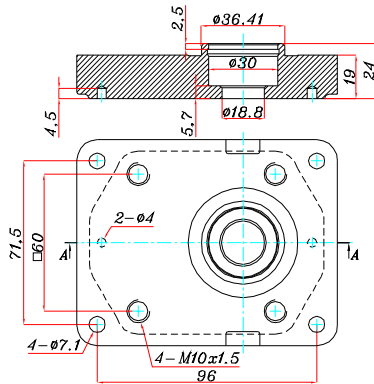
FLANGE TYPE. 10



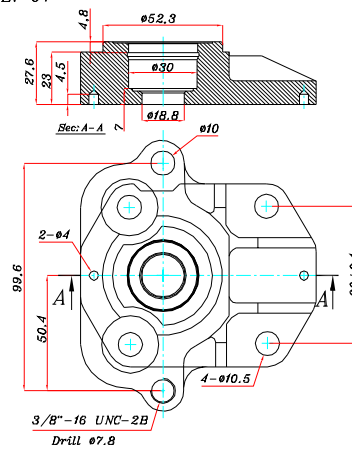
FLANGE TYPE. 25



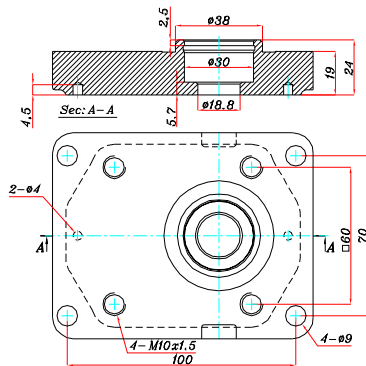
FLANGE TYPE. 01



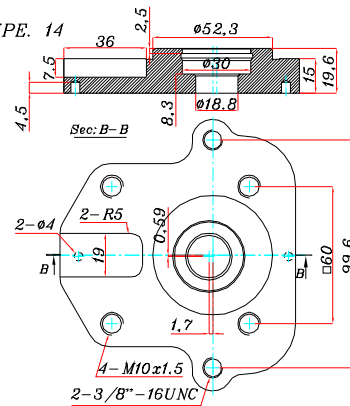
FLANGE TYPE. 07



FLANGE TYPE. 16



FLANGE TYPE. 14

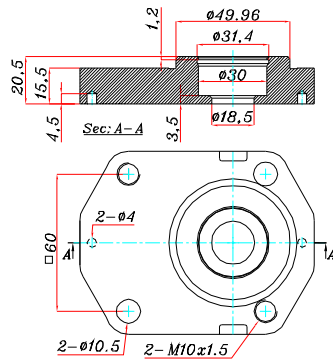


7

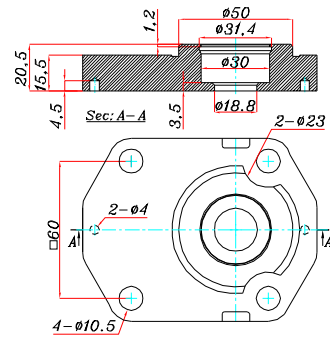
ARAFAN NAEIN CO.
Precision, Speed, Quality in Producing Hydraulic Gear Pump
Flange type model L



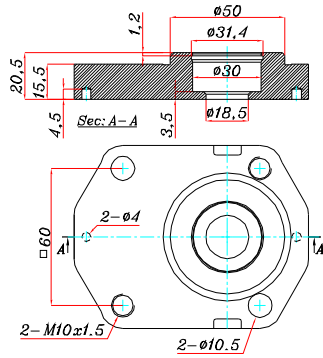
FLANGE TYPE. 22



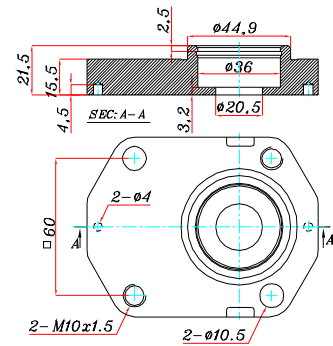
FLANGE TYPE. 51



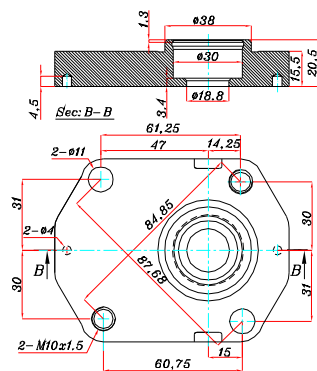
FLANGE TYPE. 55



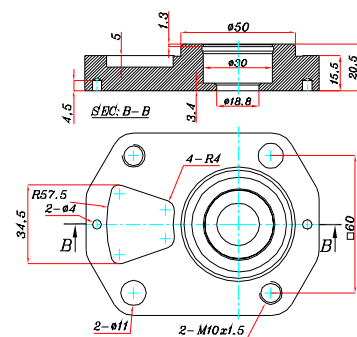
FLANGE TYPE. 53



FLANGE TYPE. 05



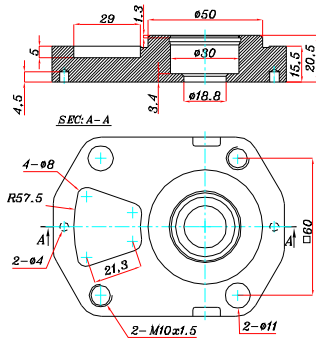
FLANGE TYPE. 50



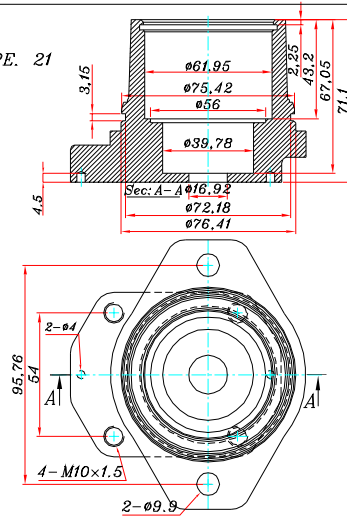


Flange type model L

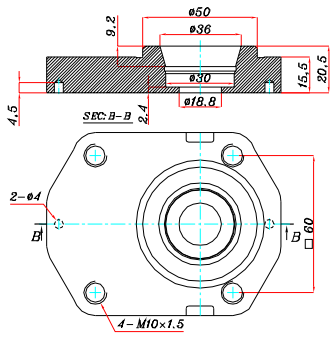
FLANGE TYPE. 52



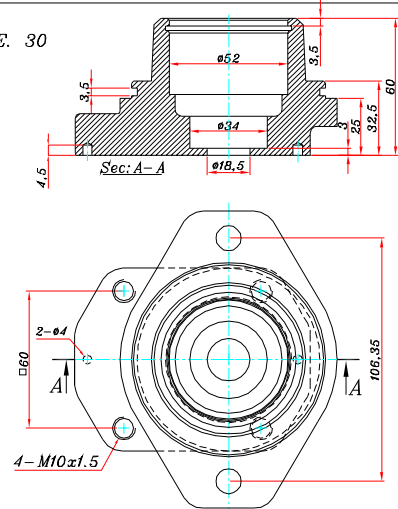
FLANGE TYPE. 21



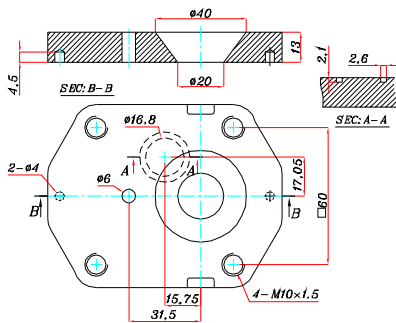
FLANGE TYPE. 15



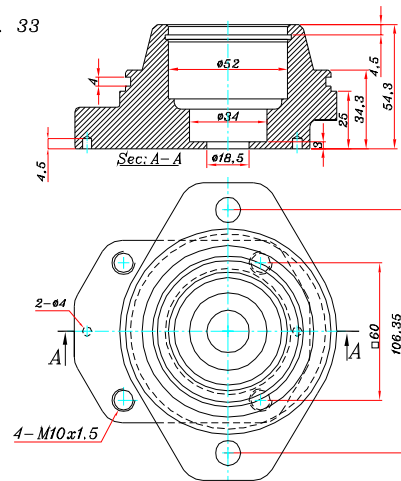
FLANGE TYPE. 30



FLANGE TYPE. 17



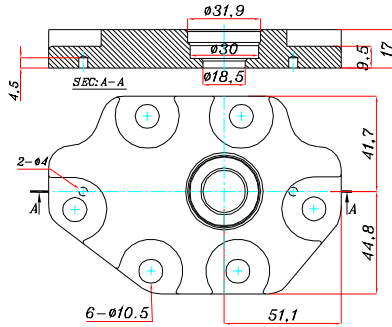
FLANGE TYPE. 33



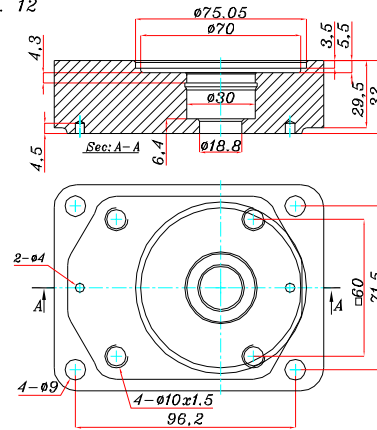


Flange type model L

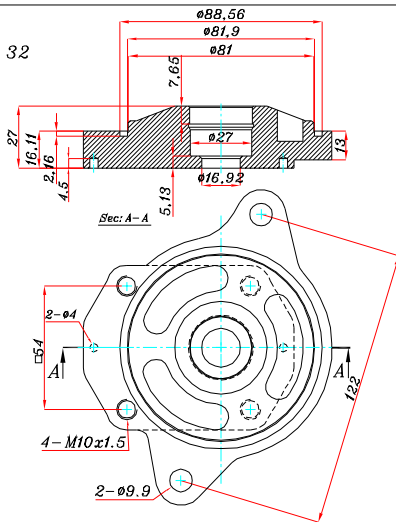
FLANGE TYPE. 28



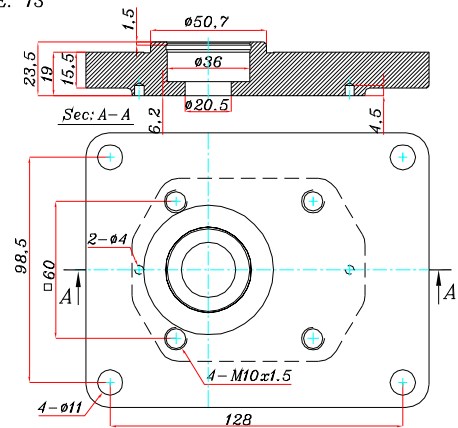
FLANGE TYPE. 12



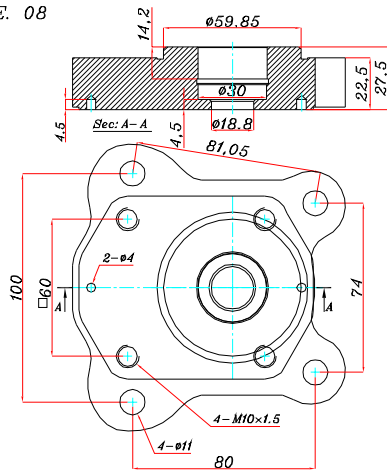
FLANGE TYPE. 32



FLANGE TYPE. 13



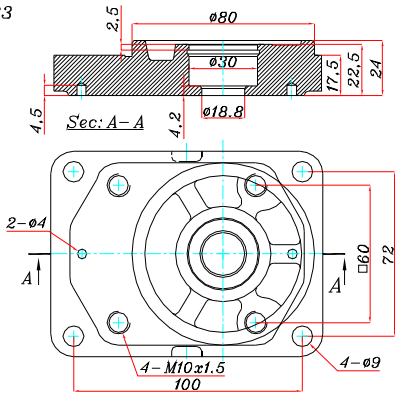
FLANGE TYPE. 08



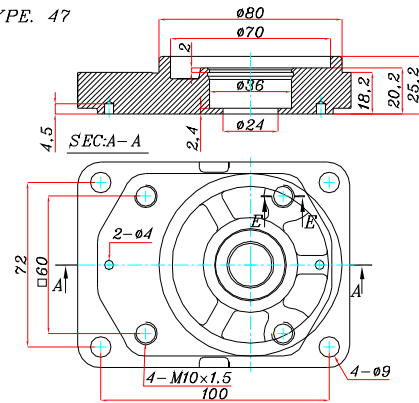


Flange type model L

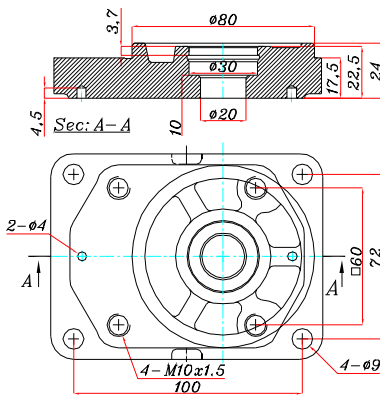
FLANGE TYPE. 23



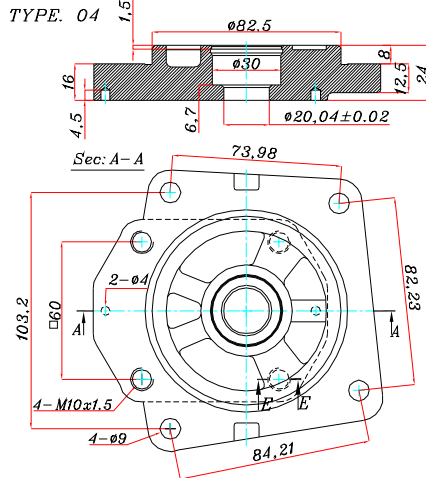
FLANGE TYPE. 47



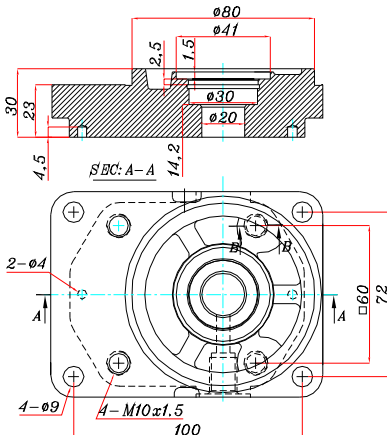
FLANGE TYPE. 45



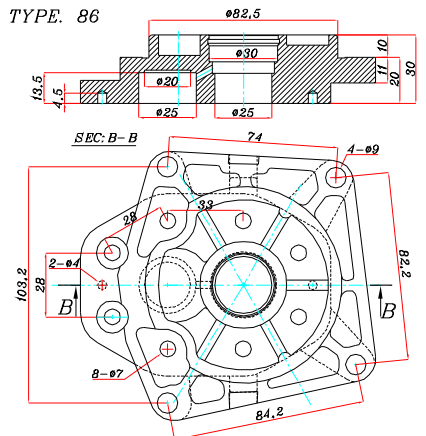
FLANGE TYPE. 04



FLANGE TYPE. 46



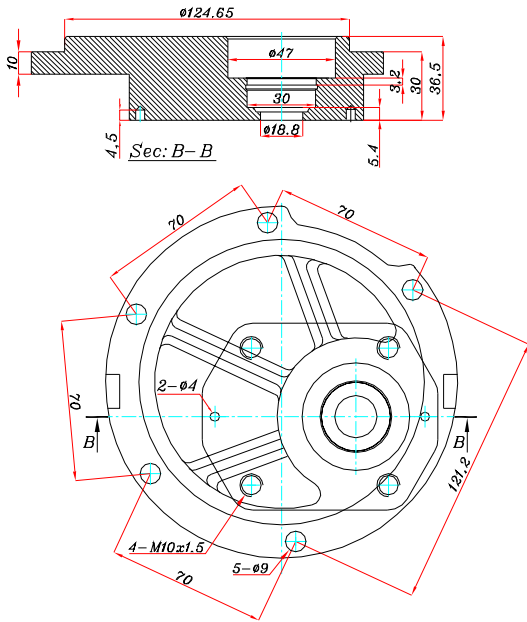
FLANGE TYPE. 86



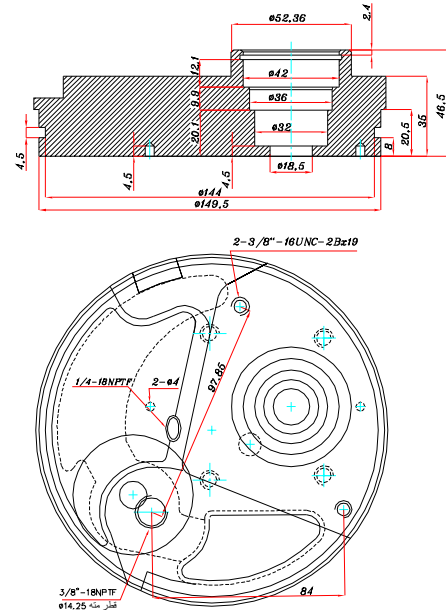


Flange type model L

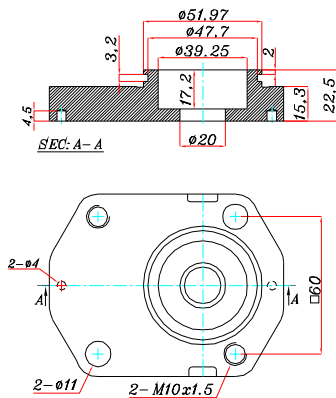
FLANGE TYPE. 11



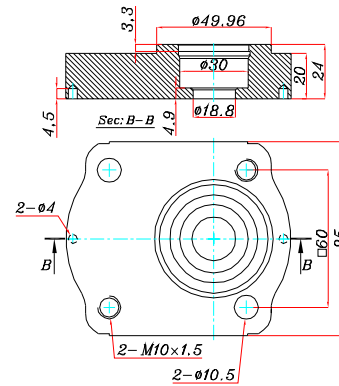
FLANGE TYPE. 03



FLANGE TYPE. 19



FLANGE TYPE. 85





Shaft type model L

<p>shaft J/J01</p>	<p>shaft C/C01</p>	<p>shaft E/E01</p>	<p>shaft Z/Z01</p>	<p>shaft N/N01</p>	<p>shaft S/S01</p>
<p>shaft J/J02</p>	<p>shaft C/C03</p>	<p>shaft E/E02</p>	<p>shaft Z/Z02</p>	<p>shaft N/N02</p>	
<p>shaft J/J05</p>	<p>shaft C/C04</p>	<p>shaft E/E04</p>	<p>shaft Z/Z03</p>	<p>shaft N/N03</p>	
<p>shaft J/J05</p>	<p>shaft C/C05</p>	<p>shaft E/E05</p>	<p>shaft F/F01</p>	<p>shaft N/N04</p>	
<p>shaft J/J06</p>	<p>shaft C/C06</p>	<p>shaft E/E06</p>	<p>shaft F/F02</p>	<p>shaft I/I01</p>	
<p>shaft J/J08</p>	<p>shaft C/C08</p>	<p>shaft E/E07</p>	<p>shaft B/B01</p>	<p>shaft I/I02</p>	
<p>shaft J/J09</p>	<p>shaft C/C09</p>	<p>shaft V/V01</p>	<p>shaft B/B02</p>	<p>shaft D/D01</p>	
<p>shaft J/J11</p>	<p>shaft C/C15</p>	<p>shaft V/V02</p>	<p>shaft B/B03</p>	<p>shaft A/A01</p>	
<p>shaft J/J13</p>	<p>shaft C/C17</p>	<p>shaft V/V03</p>	<p>shaft H/H01</p>	<p>shaft A/A02</p>	
<p>shaft Y/Y04</p>	<p>shaft C/C22</p>	<p>shaft V/V04</p>	<p>shaft H/H02</p>	<p>shaft C/C01</p>	
<p>shaft C/C25</p>	<p>shaft C/C23</p>	<p>shaft V/V05</p>	<p>shaft W/W01</p>	<p>shaft C/C02</p>	



Outlet & inlet type model L

Model: B

52	46	40	35	32	27	25	22	18	16	14	12	9	7.5	6	L/min parameter
20	20	20	20	20	20	20	20	20	20	20	13.5	13.5	13.5	13.5	d
40	40	40	40	40	40	40	40	40	40	40	40	40	40	40	D
15	15	15	15	15	15	15	15	15	15	15	15	13.5	13.5	13.5	d'
30	30	30	30	30	30	30	30	30	30	30	30	30	30	30	D'
16	16	16	16	16	16	16	16	16	16	13	13	13	13	13	e

BT315-317

Inlet

BT318

Inlet

B331

Inlet
Outlet

B331

Inlet
Outlet

B316

Inlet
Outlet

BF343

Inlet
Outlet

Model: F

52	46	40	35	32	27	25	22	18	16	14	12	9	7.5	6	L/min parameter
20	20	20	20	20	20	20	20	20	20	20	20	15	15	15	d
40	40	40	40	40	40	40	40	40	40	40	40	40	40	40	D
15	15	15	15	15	15	15	15	15	15	15	15	15	15	15	d'
35	35	35	35	35	35	35	35	35	35	35	35	35	35	35	D'

FR338

Inlet

FT364

Inlet

F365

Inlet
Outlet

Model: R

52	46	40	35	32	27	25	22	18	16	14	12	9	7.5	6	L/min parameter
3/4"	3/4"	3/4"	3/4"	3/4"	3/4"	1/2"	1/2"	1/2"	1/2"	1/2"	1/2"	1/2"	3/8"	3/8"	D
1/2"	1/2"	1/2"	1/2"	1/2"	1/2"	3/8"	3/8"	3/8"	3/8"	3/8"	3/8"	3/8"	3/8"	3/8"	D'

RT362

Inlet

R339

Inlet
Outlet

R313

Inlet
Outlet

R325

Inlet
Outlet

R355

Inlet
Outlet

R350

Inlet
Outlet

R350

Inlet
Outlet

RT344

Inlet

BR311

Inlet
Outlet

BR311

Inlet
Outlet

R302

Inlet
Outlet

Model: A

52	46	40	35	32	27	25	22	18	16	14	12	9	7.5	6	L/min parameter
16	16	16	16	16	16	16	16	16	16	16	13	13	13	13	e

Model: C

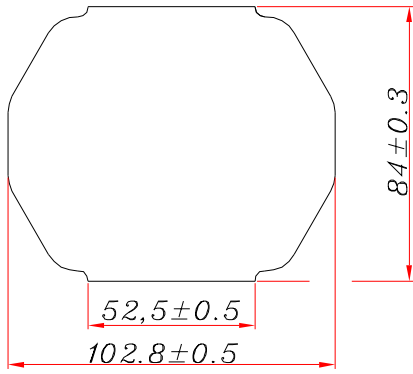
Inlet
Outlet

C337

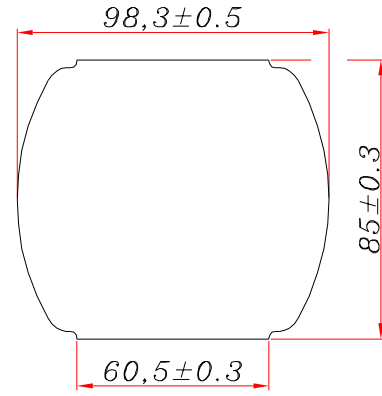
Inlet
Outlet



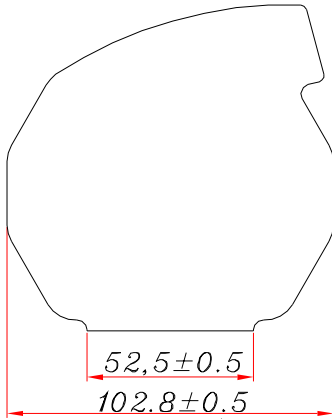
Body form model L



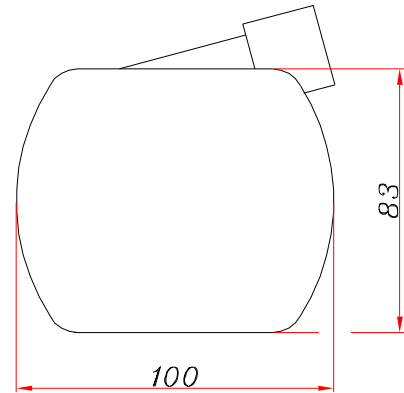
01



03



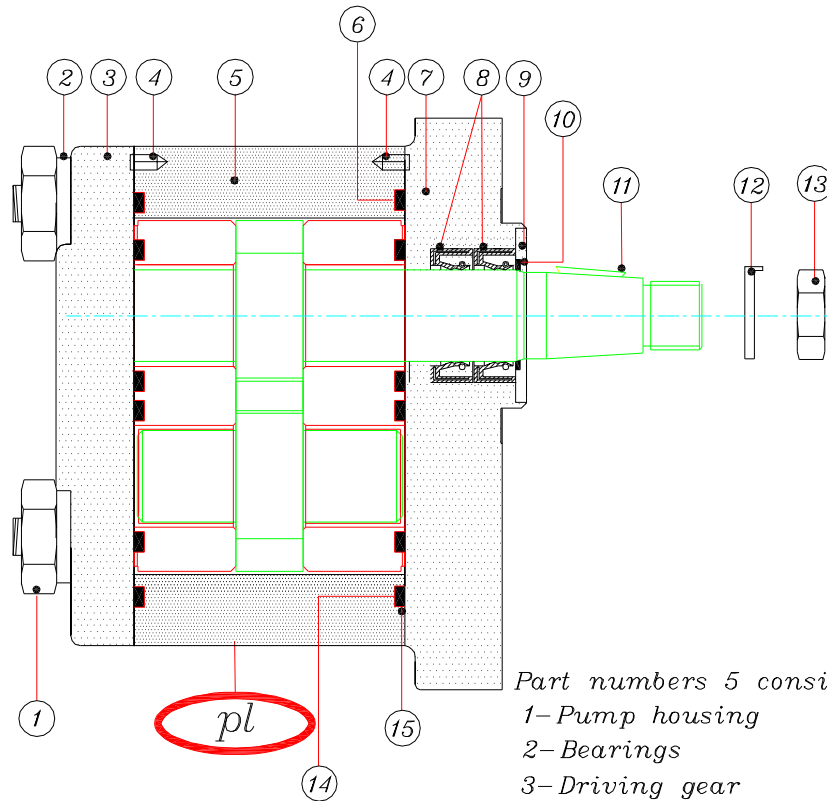
02/1



02/2



Assembly pump model L



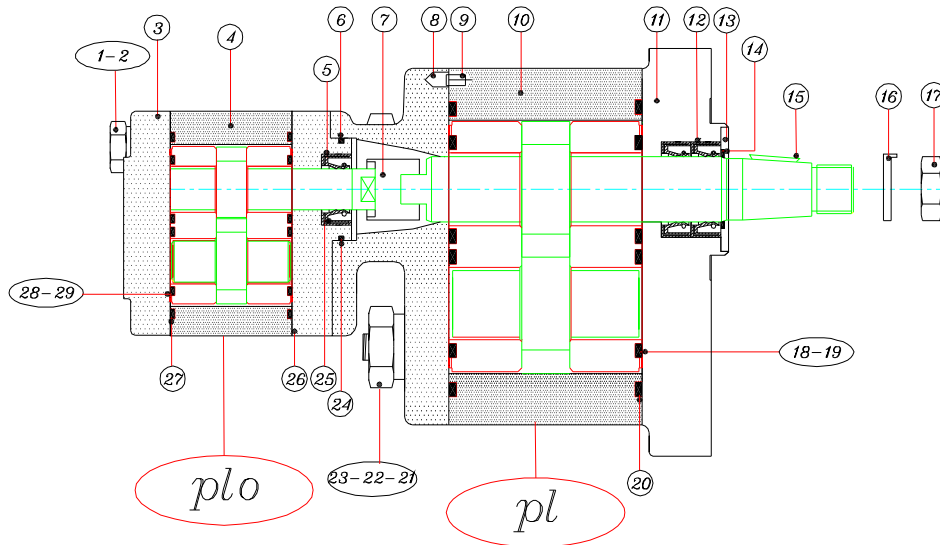
Part numbers 5 consists of:

- 1- Pump housing
- 2- Bearings
- 3- Driving gear
- 4- Driven gear

No.	Description	Qty
1	Screw M10	4
2	Washer $\phi 10$ DIN6797	4
3	Back cover	1
4	Elastic pin DIN-1481 $\phi 4 \times 8$	2
5	Pump housing sub-assembly	1
6	Gasket	2
7	Flange	1
8	Oil seal	2
9	Circlip	1
10	Guide gasket	1
11	Key	1
12	Safety washer	1
13	Shaft nut	1
14	Gasket	2
15	Anti-extrusion gasket	2



Double pump model LS



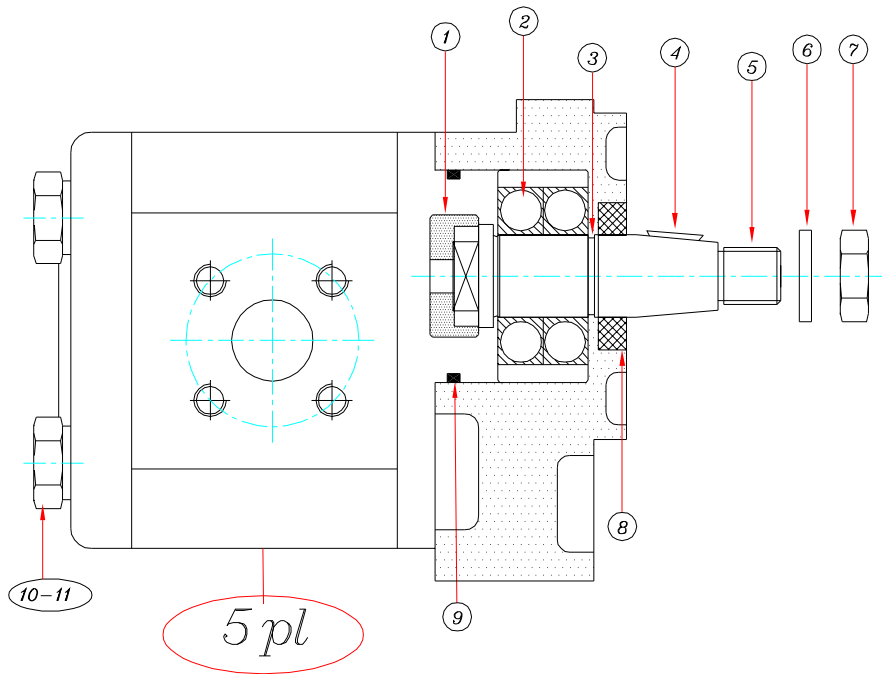
Part numbers 4-10 consists of:
 1- Pump housing
 2- Bearings
 3- Driving gear
 4- Driven

No.	Description	Qty
1	Screw M8	2
2	Washer DIN679708	2
3	Back cover	1
4	Pump housing sub-assembly	1
5	Guide gasket	1
6	Circlip	1
7	Coupling	1
8	Guide ring	1
9	Elastic pin	1
10	Pump housing sub-assembly	1
11	Flange	1
12	Oil seal	2
13	Circlip	1
14	Guide gasket	1
15	Key	1

No.	Description	Qty
16	Safety washer	1
17	Shaft nut	1
18	Gasket	2
19	Anti-extrusion gasket	2
20	Gasket	2
21	Screws	4
22	Nut	4
23	Washer DIN679708	4
24	O-ring $\phi 27.7 \times 2$	1
25	Oil seal	1
26	Double pump flange	1
27	Gasket	2
28	Gasket	2
29	Anti-extrusion gasket	2



Assembly pump model 5L



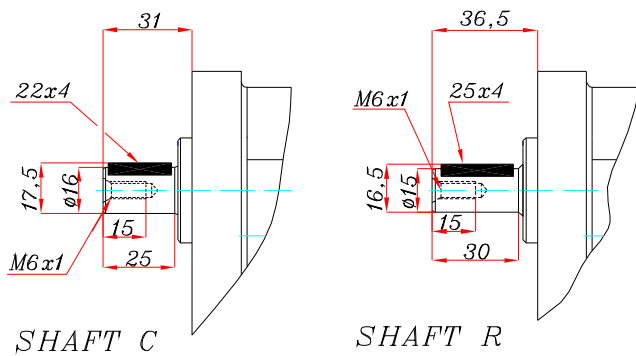
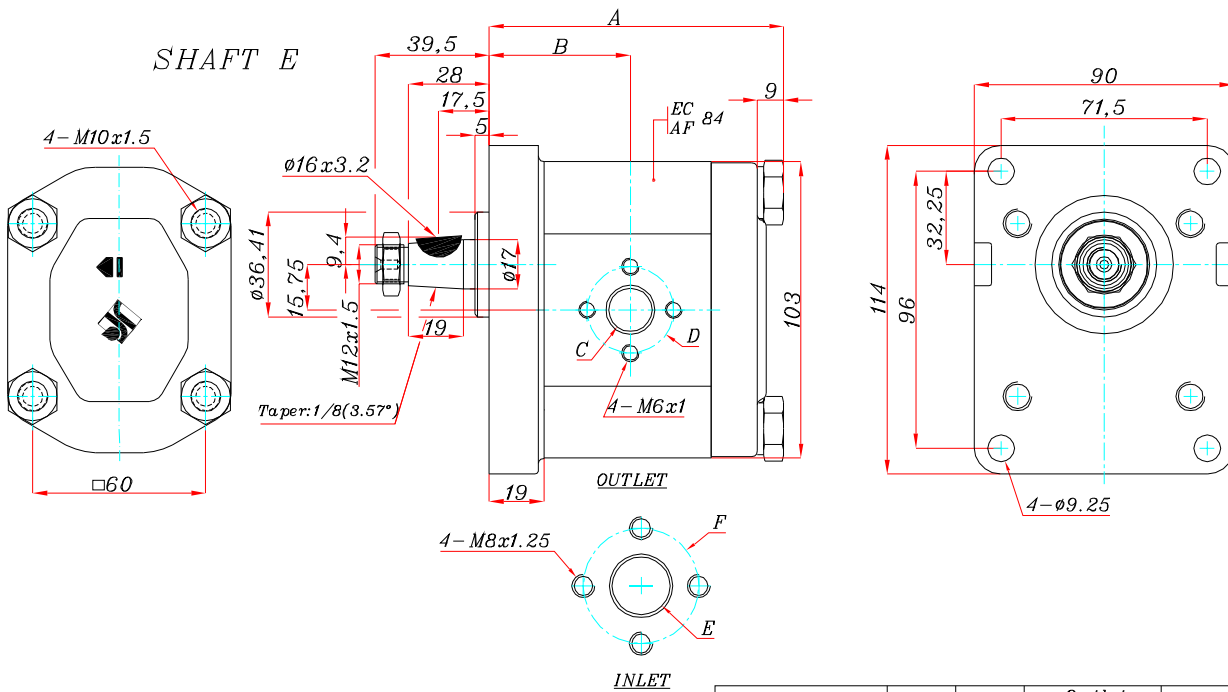
No.	Descripcion	Qut
1	Coupling	1
2	Ball bearing	1
3	Circlip DIN-471	1
4	Key	1
5	Driving shaft	1
6	Washer DIN-7980 $\phi 14$	1
7	Shaft nut	1
8	Oil seal	1
9	O-ring $\phi 46 \times 2.5$	1
10	Screw	4
11	Washer DIN-6797 $\phi 10$	4



Pump with flange type 10
Model L

301-1L....(C/CC)E10B

SHAFT E&C&R(01)
OUTLET & INLET B
FLANGE 10



Model	A	B	Outlet		Inlet		Weight
			C	D	E	F	
301-1L6C▲10B	91	40	13.5	30	13.5	30	
301-1L7.5C▲10B	92.7	40	13.5	30	13.5	30	
301-1L9C▲10B	94.4	42.5	13.5	30	13.5	30	
301-1L12C▲10B	97.6	44.6	15	30	20	40	
301-1L14C▲10B	99.8	44.6	15	30	20	40	
301-1L16C▲10B	102.1	49	15	30	20	40	
301-1L18C▲10B	104.3	49	15	30	20	40	
301-1L22C▲10B	108.9	49	15	30	20	40	
301-1L25C▲10B	112.3	49	15	30	20	40	
301-1L27C▲10B	114.6	49	15	30	20	40	
301-1L32C▲10B	120.7	54.7	15	30	20	40	
301-1L35C▲10B	123.6	56.5	15	30	20	40	
301-1L40C▲10B	129.8	59.3	15	30	20	40	
301-1L46C▲10B	136.1	62	15	30	20	40	
301-1L52C▲10B	143	66.2	15	30	20	40	

In the reversible pumps, threaded ports available R only. both ports same dimension that corresponds to the suction dimension. The drawing above shows a pump turning clockwise. For anti-clockwise rotation sense; replace C by CC in which case suction and pressure ports shall be inverted.

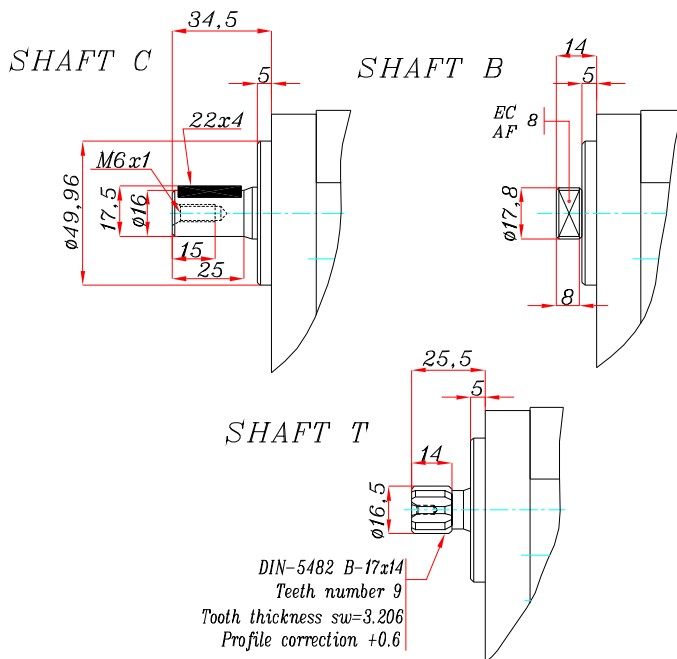
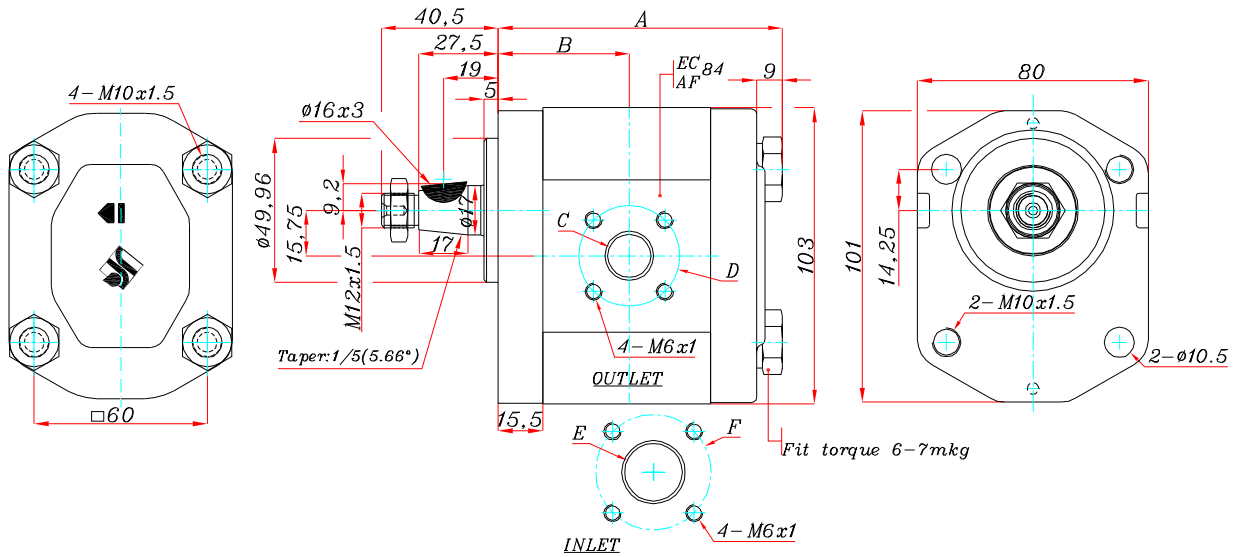


Pump with flange type 22
Model L

301-1L....(C/CC)J22F

SHAFT J&C&B&T(01)
OUTLET & INLET F
FLANGE 22

SHAFT J



Model	A	B	Outlet		Inlet		Weight
			C	D	E	F	
301-1L6C▲22F	87.5	36.5	15	35	15	40	
301-1L7.5C▲22F	89.2	36.5	15	35	15	40	
301-1L9C▲22F	90.9	39	15	35	15	40	
301-1L12C▲22F	94.1	41.1	15	35	20	40	
301-1L14C▲22F	96.3	41.1	15	35	20	40	
301-1L16C▲22F	98.6	45.5	15	35	20	40	
301-1L18C▲22F	100.8	45.5	15	35	20	40	
301-1L22C▲22F	105.4	45.5	15	35	20	40	
301-1L25C▲22F	108.8	45.5	15	35	20	40	
301-1L27C▲22F	111.1	45.5	15	35	20	40	
301-1L32C▲22F	117.2	51.2	15	35	20	40	
301-1L35C▲22F	120.1	53	15	35	20	40	
301-1L40C▲22F	126.3	55.8	15	35	20	40	
301-1L46C▲22F	132.6	58.5	15	35	20	40	
301-1L52C▲22F	139.5	62.7	15	35	20	40	

In the reversible pumps, threaded ports available R only. both ports same dimension that corresponds to the suction dimension. The drawing above shows a pump turning clockwise. For anti-clockwise rotation sense; replace C by CC in which case suction and pressure ports shall be inverted.

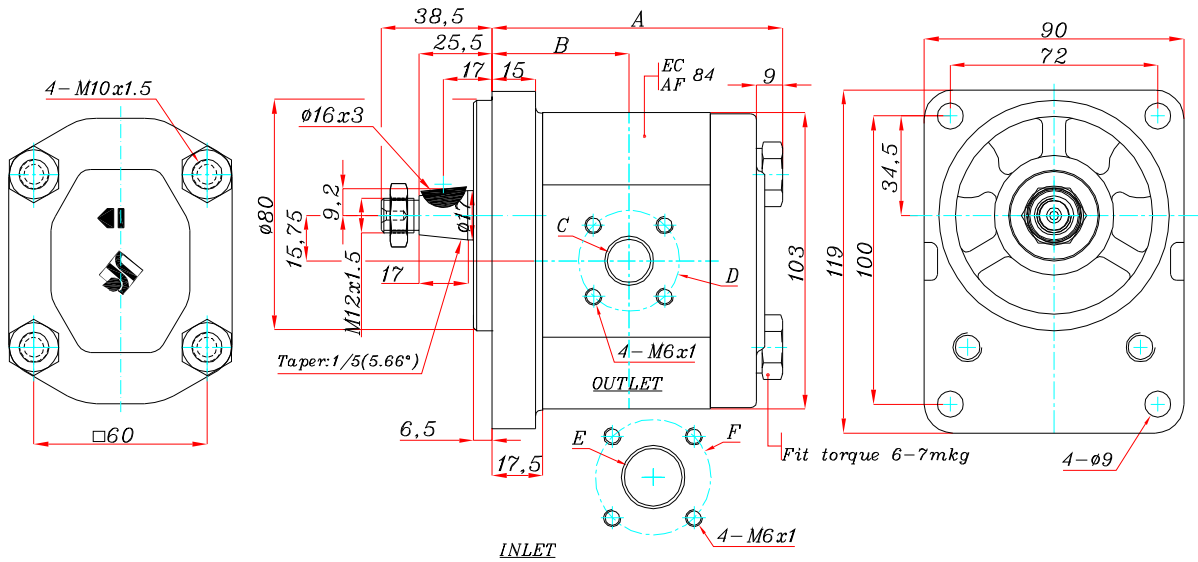


Pump with flange type 23
Model L

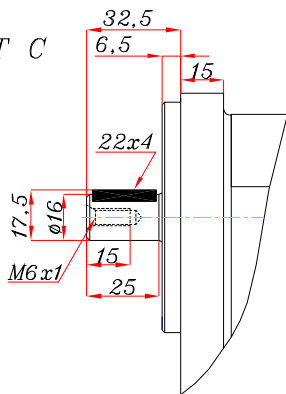
301-1L...(C/CC)J23F

SHAFT J&C&B&T(01)
OUTLET & INLET F
FLANGE 23

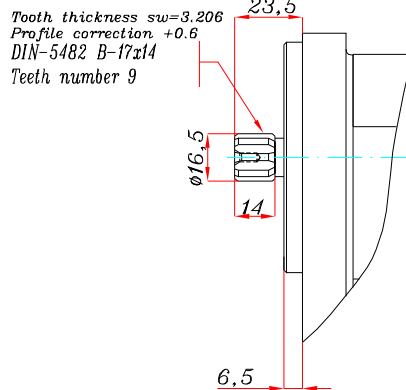
SHAFT J



SHAFT C



SHAFT T



Model	A	B	Outlet		Inlet		Weight
			C	D	E	F	
301-1L6C▲23F	89.5	38.5	15	35	15	40	
301-1L7.5C▲23F	91.2	38.5	15	35	15	40	
301-1L9C▲23F	92.9	41	15	35	15	40	
301-1L12C▲23F	96.1	43.1	15	35	20	40	
301-1L14C▲23F	98.3	43.1	15	35	20	40	
301-1L16C▲23F	100.6	47.5	15	35	20	40	
301-1L18C▲23F	102.8	47.5	15	35	20	40	
301-1L22C▲23F	107.4	47.5	15	35	20	40	
301-1L25C▲23F	110.8	47.5	15	35	20	40	
301-1L27C▲23F	113.1	47.5	15	35	20	40	
301-1L32C▲23F	119.2	53.2	15	35	20	40	
301-1L35C▲23F	122.1	55	15	35	20	40	
301-1L40C▲23F	128.3	57.8	15	35	20	40	
301-1L46C▲23F	134.6	60.5	15	35	20	40	
301-1L52C▲23F	141.5	64.7	15	35	20	40	

In the reversible pumps, threaded ports available R only. Both ports same dimension that corresponds to the suction dimension. The drawing above shows a pump turning clockwise. For anti-clockwise rotation sense; replace C by CC in which case suction and pressure ports shall be inverted.

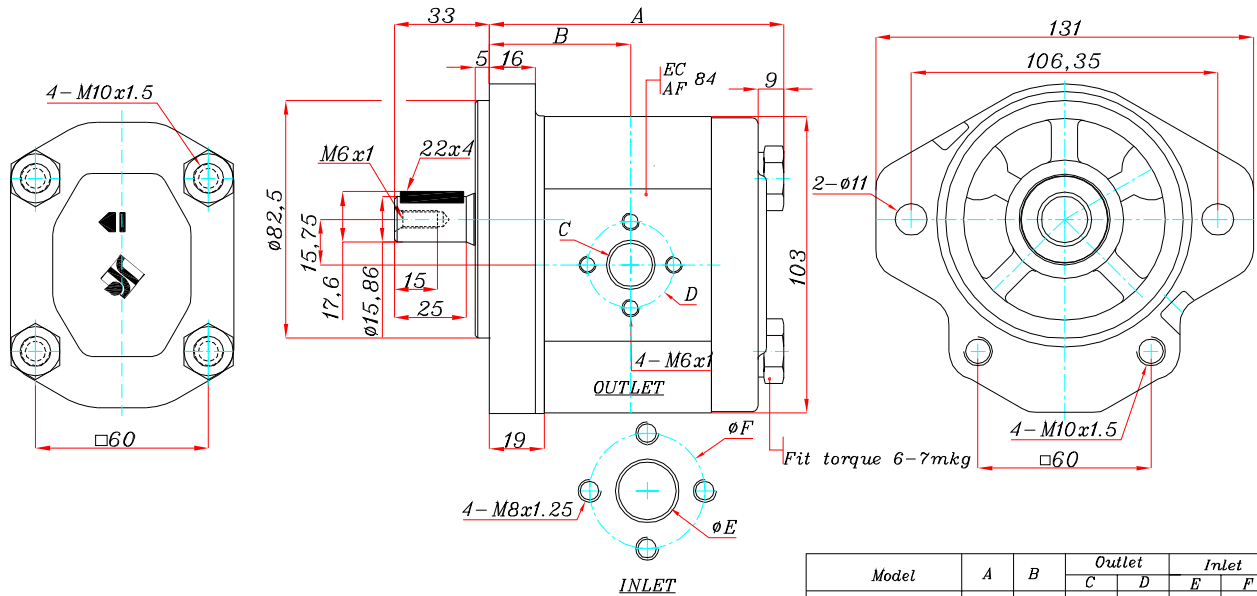


Pump with flange type 09
Model L

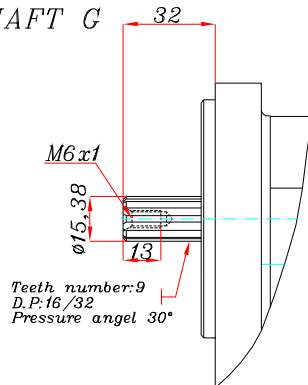
301-1L...(C/CC)H09B

SHAFT H&G&K(01)
OUTLET & INLET B
FLANGE 09

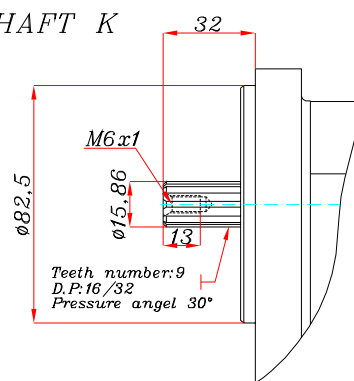
SHAFT H



SHAFT G



SHAFT K



Model	A	B	Outlet		Inlet		Weight
			C	D	E	F	
301-1L6C▲09B	91	40	13.5	30	13.5	30	
301-1L7.5C▲09B	92.7	40	13.5	30	13.5	30	
301-1L9C▲09B	94.4	42.5	13.5	30	13.5	30	
301-1L12C▲09B	97.6	44.6	15	30	20	40	
301-1L14C▲09B	99.8	44.6	15	30	20	40	
301-1L16C▲09B	102.1	49	15	30	20	40	
301-1L18C▲09B	104.3	49	15	30	20	40	
301-1L22C▲09B	108.9	49	15	30	20	40	
301-1L25C▲09B	112.3	49	15	30	20	40	
301-1L27C▲09B	114.6	49	15	30	20	40	
301-1L32C▲09B	120.7	54.7	15	30	20	40	
301-1L35C▲09B	123.6	56.5	15	30	20	40	
301-1L40C▲09B	129.8	59.3	15	30	20	40	
301-1L46C▲09B	136.1	62	15	30	20	40	
301-1L52C▲09B	143	66.2	15	30	20	40	

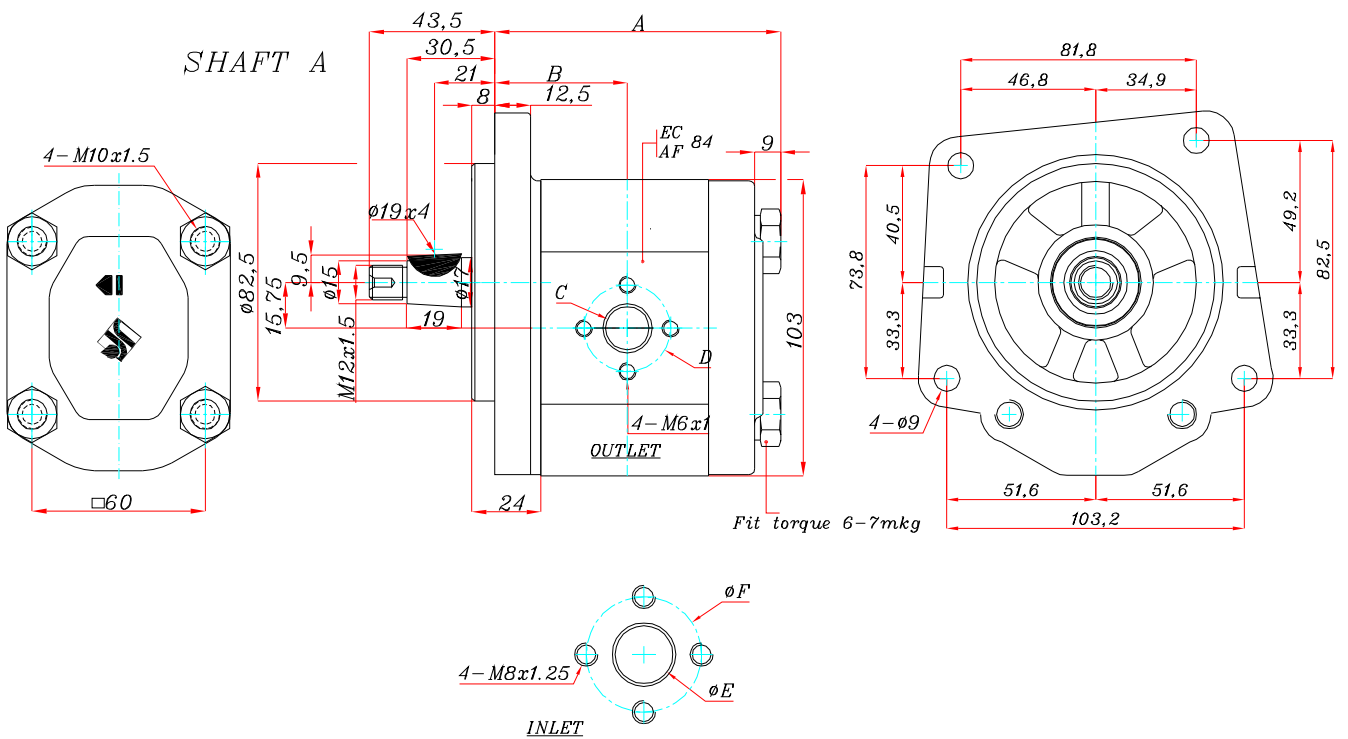
In the reversible pumps, threaded ports available R only. Both ports same dimension that corresponds to the suction dimension. The drawing above shows a pump turning clockwise. For anti-clockwise rotation sense; replace C by CC in which case suction and pressure ports shall be inverted.



Pump with flange type 04
Model L

301-1L....(C/CC)A04B

SHAFT A(01)
OUTLET & INLET B
FLANGE 04



Model	A	B	Outlet		Inlet		Weight
			C	D	E	F	
301-1L6CA04B	91	40	13.5	30	13.5	30	
301-1L7.5CA04B	92.7	40	13.5	30	13.5	30	
301-1L9CA04B	94.4	42.5	13.5	30	13.5	30	
301-1L12CA04B	97.6	44.6	15	30	20	40	
301-1L14CA04B	99.8	44.6	15	30	20	40	
301-1L16CA04B	102.1	49	15	30	20	40	
301-1L18CA04B	104.3	49	15	30	20	40	
301-1L22CA04B	108.9	49	15	30	20	40	
301-1L25CA04B	112.3	49	15	30	20	40	
301-1L27CA04B	114.6	49	15	30	20	40	
301-1L32CA04B	120.7	54.7	15	30	20	40	
301-1L35CA04B	123.6	56.5	15	30	20	40	
301-1L40CA04B	129.8	59.3	15	30	20	40	
301-1L46CA04B	136.1	62	15	30	20	40	
301-1L52CA04B	143	66.2	15	30	20	40	

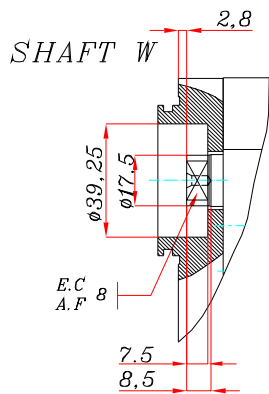
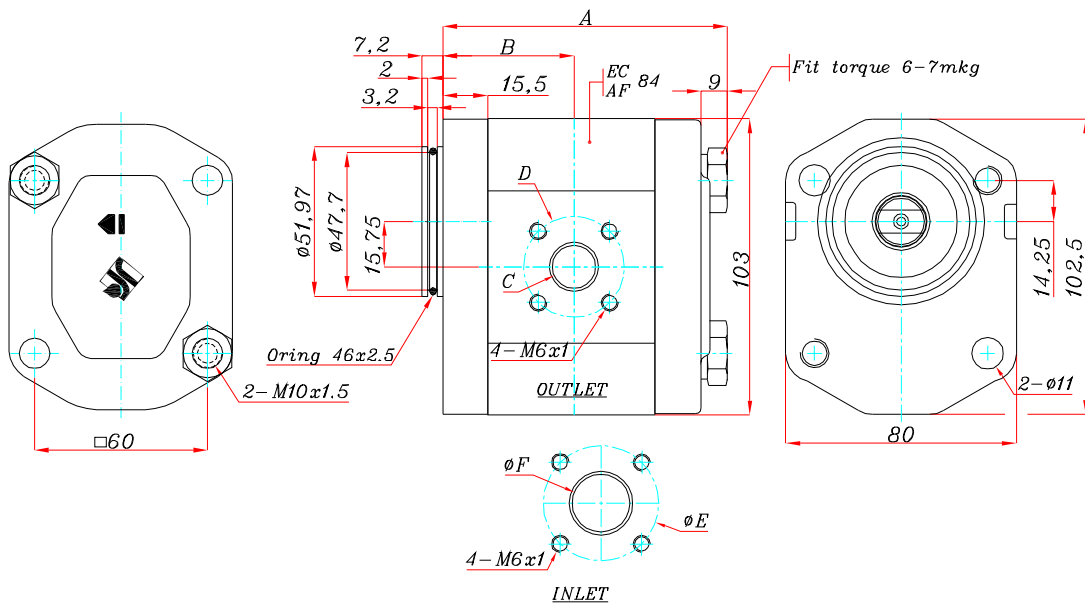
In the reversible pumps , threaded ports available R only .both ports same dimension that corresponds to the suction dimension
The drawing above shows a pump turning clockwise .For anti -clockwise rotation sense ;replace C by CC in which case suction and pressure ports shall be inverted



Pump with flange type 19
Model L

301-1L...(C/CC)W19F

SHAFT W(01)
OUTLET & INLET F
FLANGE 19



Model	A	B	Outlet		Inlet		Weight
			C	D	E	F	
301-1L6CW19F	87.5	36.5	15	35	15	40	
301-1L7.5CW19F	89.2	36.5	15	35	15	40	
301-1L9CW19F	90.9	39	15	35	15	40	
301-1L12CW19F	94.1	41.1	15	35	20	40	
301-1L14CW19F	96.3	41.1	15	35	20	40	
301-1L16CW19F	98.6	45.5	15	35	20	40	
301-1L18CW19F	100.8	45.5	15	35	20	40	
301-1L22CW19F	105.4	45.5	15	35	20	40	
301-1L25CW19F	108.8	45.5	15	35	20	40	
301-1L27CW19F	111.1	45.5	15	35	20	40	
301-1L32CW19F	117.2	51.2	15	35	20	40	
301-1L35CW19F	120.1	53	15	35	20	40	
301-1L40CW19F	126.3	55.8	15	35	20	40	
301-1L46CW19F	132.6	58.5	15	35	20	40	
301-1L52CW19F	139.5	62.7	15	35	20	40	

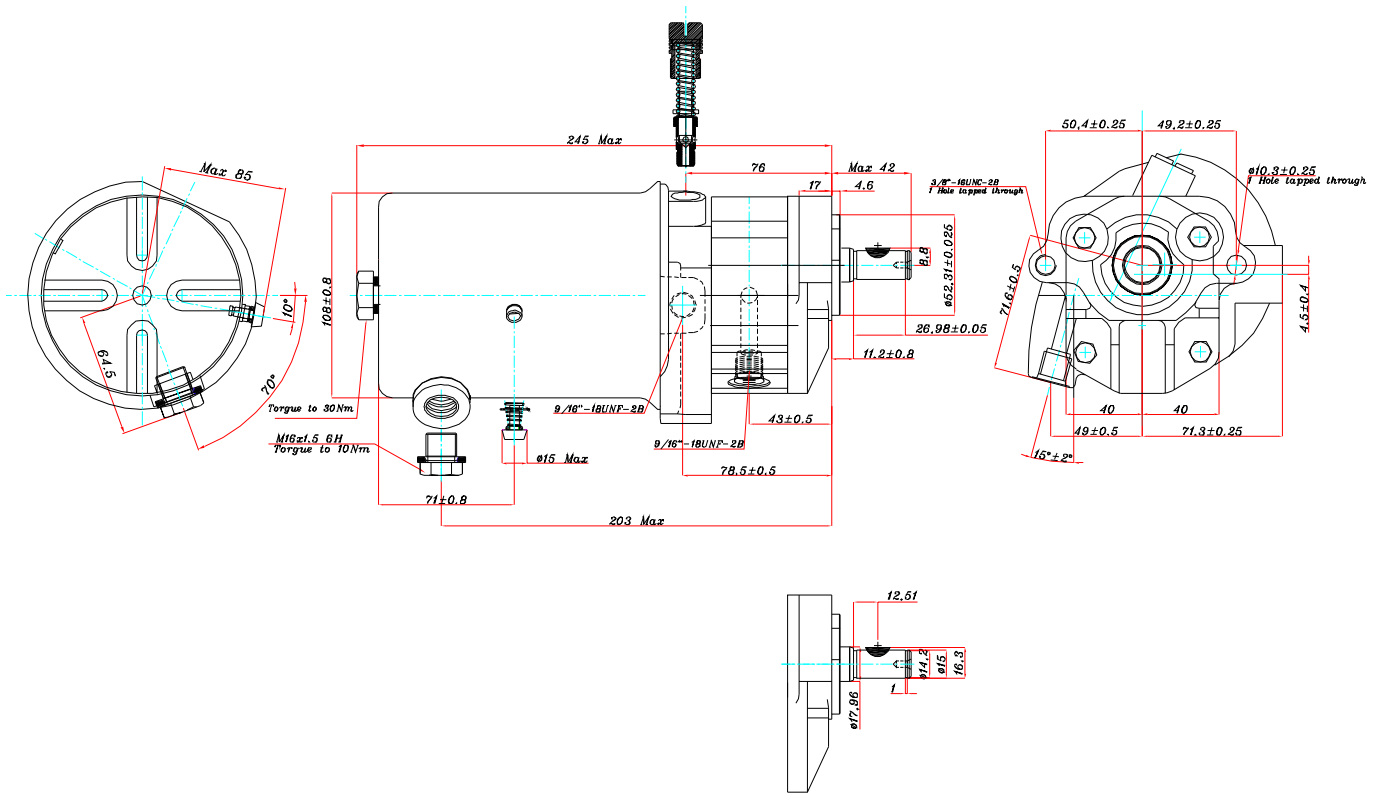
In the reversible pumps, threaded ports available R only. both ports same dimension that corresponds to the suction dimension. The drawing above shows a pump turning clockwise. For anti-clockwise rotation sense; replace C by CC in which case suction and pressure ports shall be inverted.



Pump with flange type 07
 Model L

302-1L10CCN07R/VD
 USING FOR MF 285 Tractor

SHAFT N(N02)
 OUTLET & INLET R
 FLANGE 07



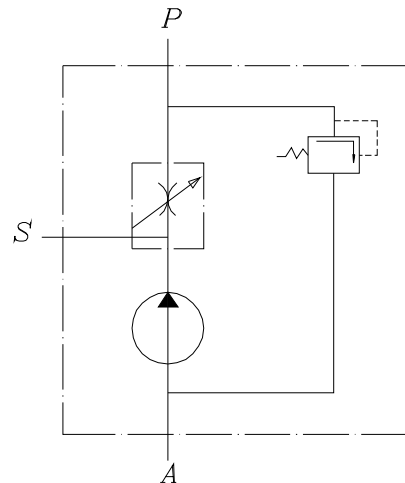
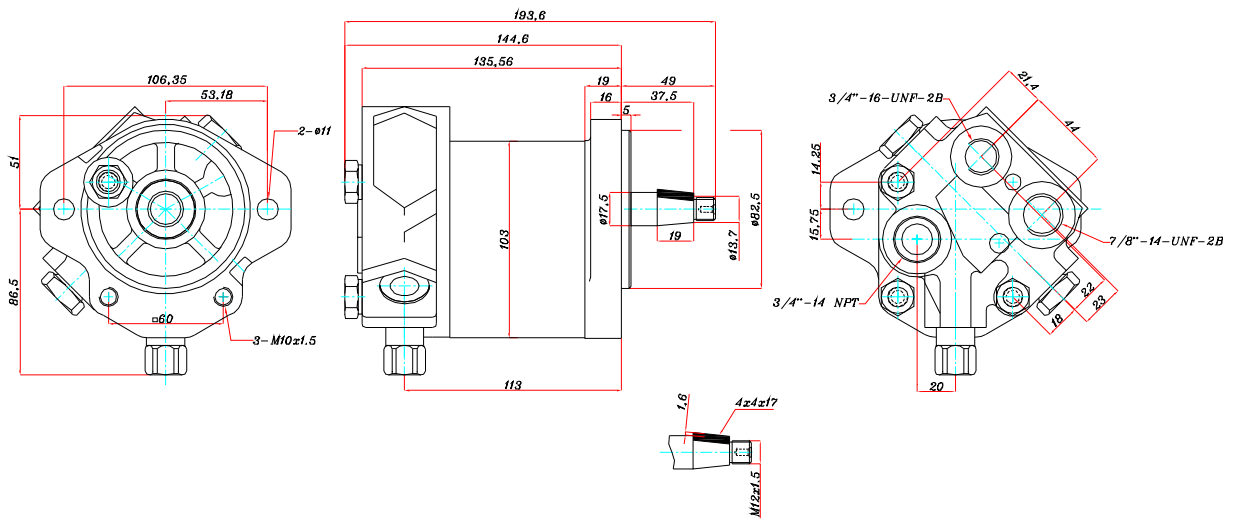
Pump type	Displacement (cm ³ /rev)	MAX Pressure (bar)	MAX Speed (rpm)	Min Speed (rpm)
302-1L9CCN07R/VD	6	-	3500	500
Relief valve	120±10 bar			



Pump with flange type 27
 Model L

304-1L27CCJ27T/RC
 USING FOR COMBINE JOHN DEERE 955

SHAFT J(J08)
 OUTLET & INLET T
 FLANGE 27



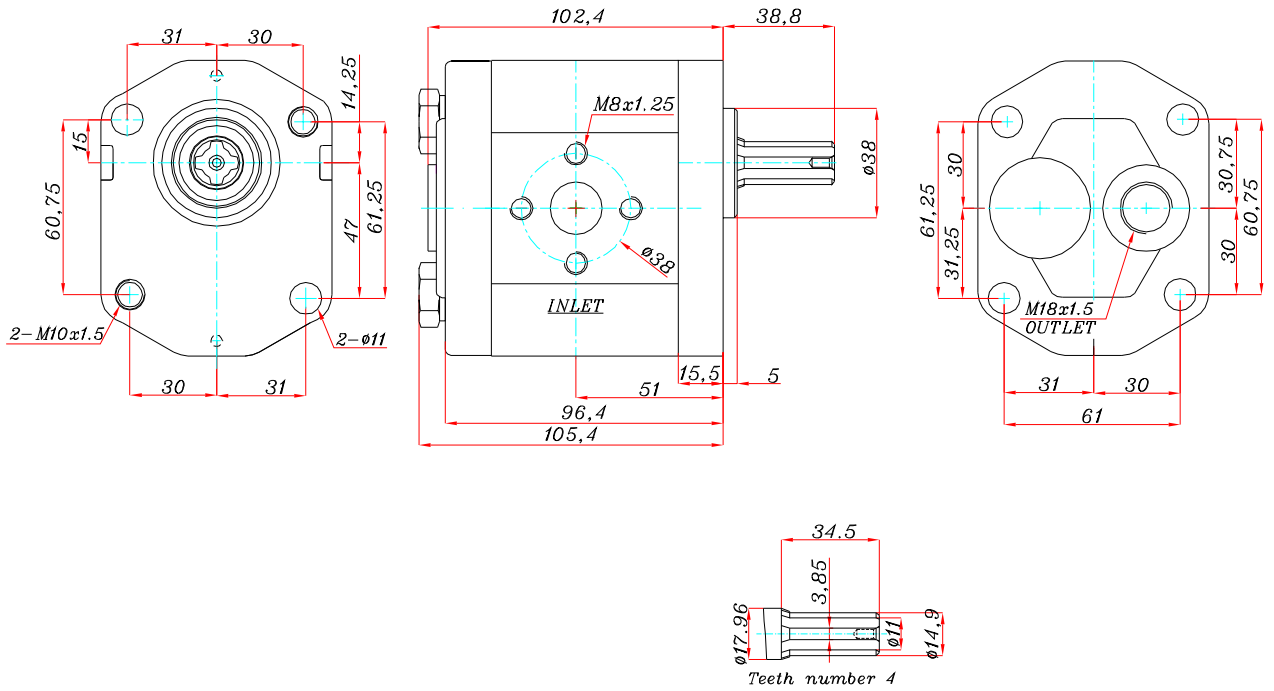
Pump type	Displacement (cm ³ /rev)	MAX Pressure (bar)	MAX Speed (rpm)	Min Speed (rpm)
304-1L27CCJ27T/RC	18	225 bar	2300 RPM	500
Relief valve	100±10 bar			
Priority Flow	12 Lit/min.			



*Pump with flange type 05
 Model L*

*317-1L22CI05BT
 USING FOR DARVANA SEMNON*

*SHAFT I(101)
 OUTLET & INLET BT
 FLANGE 05*

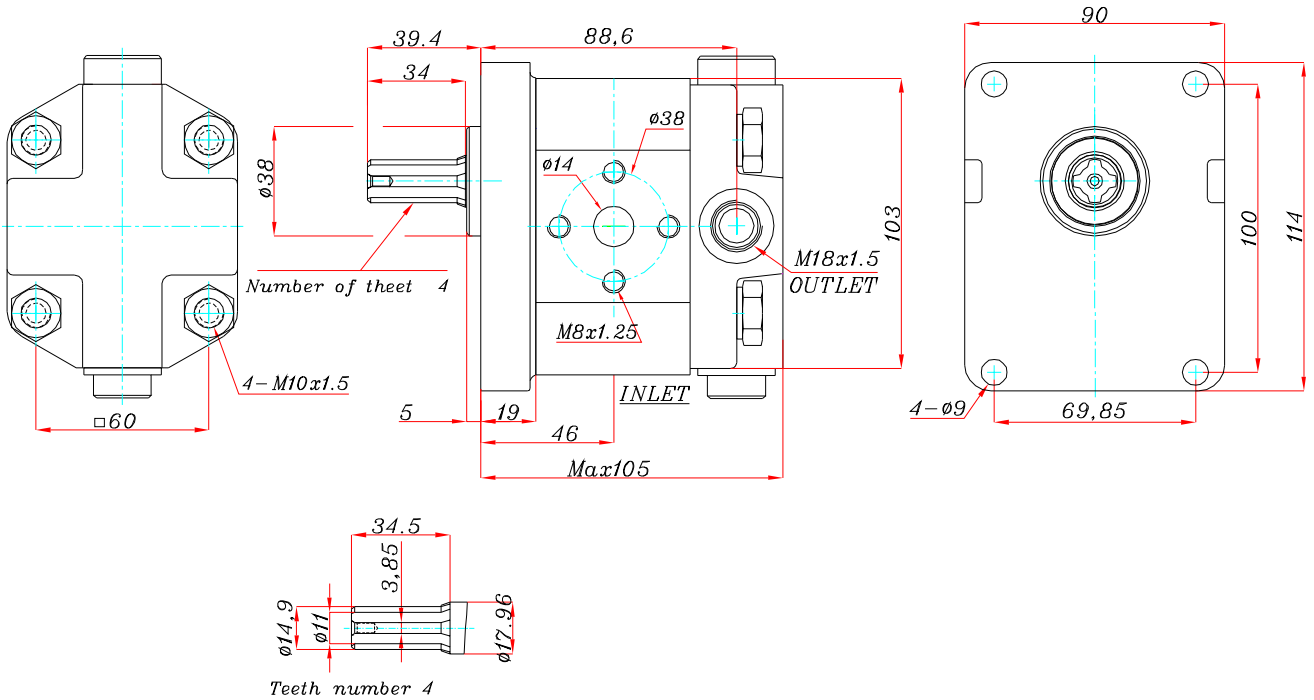




Pump with flange type 16
Model L

318-1L12CCI16BT/VC
USING FOR DARVANA SEMNON

SHAFT I(102)
OUTLET & INLET BT
FLANGE 16



Pump type	Displacement (cm ³ /rev)	PUMP FLOW RATE (Lit/min) 1500 (rpm)	MAX Pressure (bar)	MAX Speed (rpm)
318-1L12CCI16BT/VC	8	12 Lit/min	250	-
Relief valve	100 bar			
Flow control valve	10.5 Lit/Min			

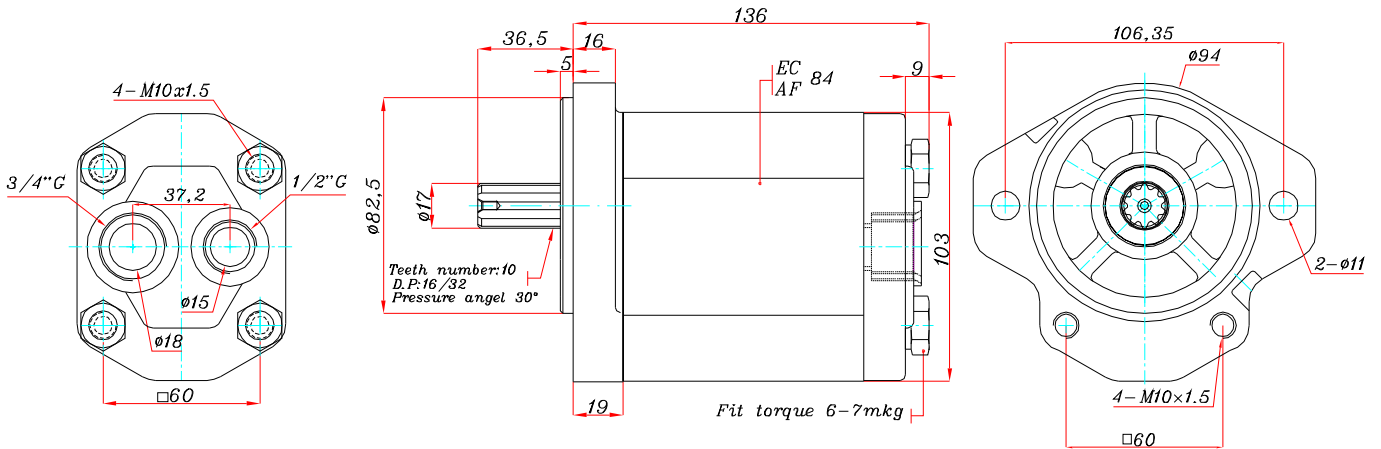


Pump with flange type 09
 Model L

348-1L46CCG09T

SHAFT C(G25)
 OUTLET & INLET T
 FLANGE 09

USING FOR TADNO 3ton&5ton

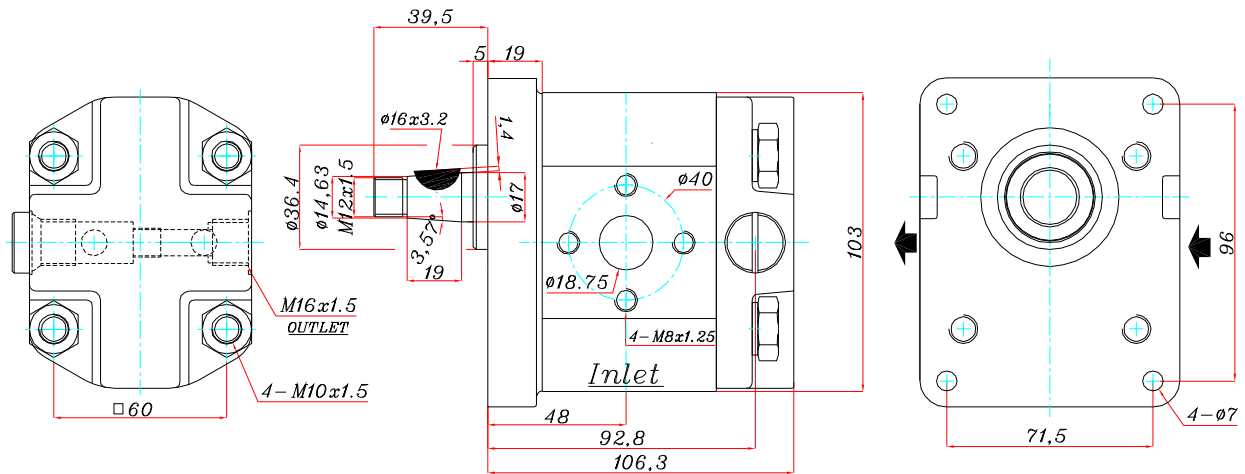




Pump with flange type 01
Model L

307-1L18CCE01BT/V
USING FOR FORK LIFT DV. (steering pump)

SHAFT E(E01)
OUTLET & INLET BT
FLANGE 01



Pump type	Displacement (cm ³ /rev)	MAX Pressure (bar)	MAX Speed (rpm)	Min Speed (rpm)
307-1L18CCE01BT/V	12	275	3500	500
Relief valve	120±10 bar			

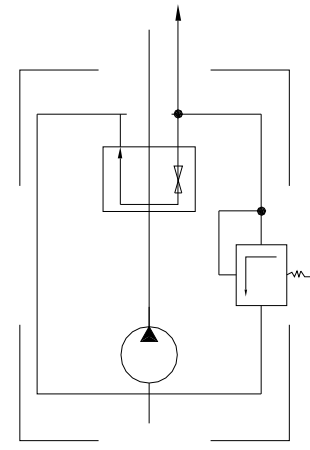
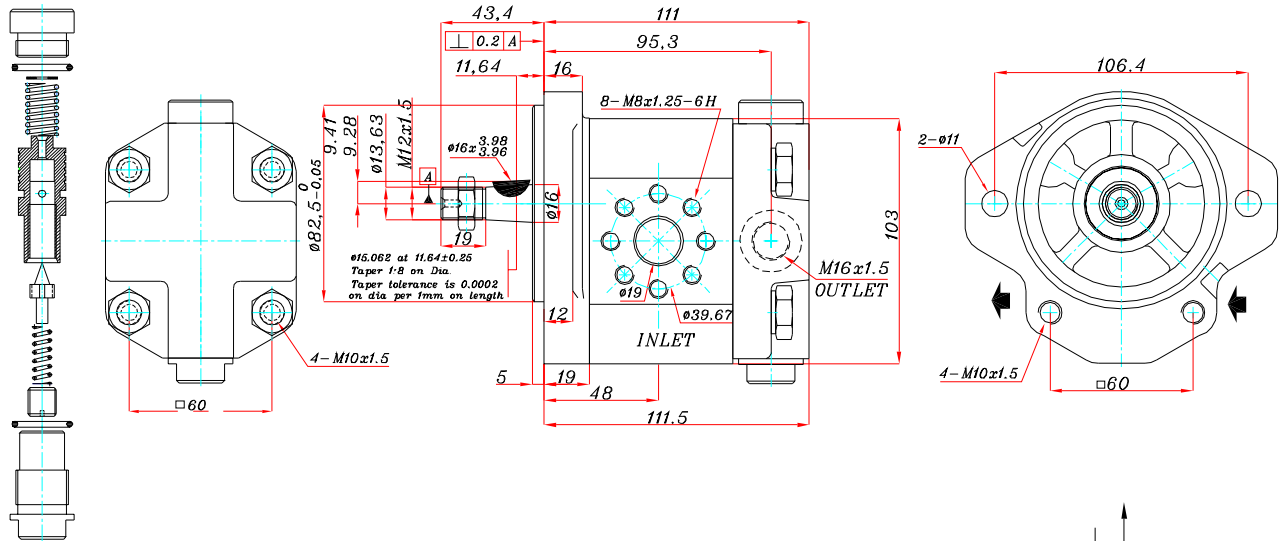


Pump with flange type 37
Model L

310-1L18CCE37FT/VC

USING FOR FORK LIFT SD.(steering pump)

SHAFT E(E02)
OUTLET & INLET FT
FLANGE 37



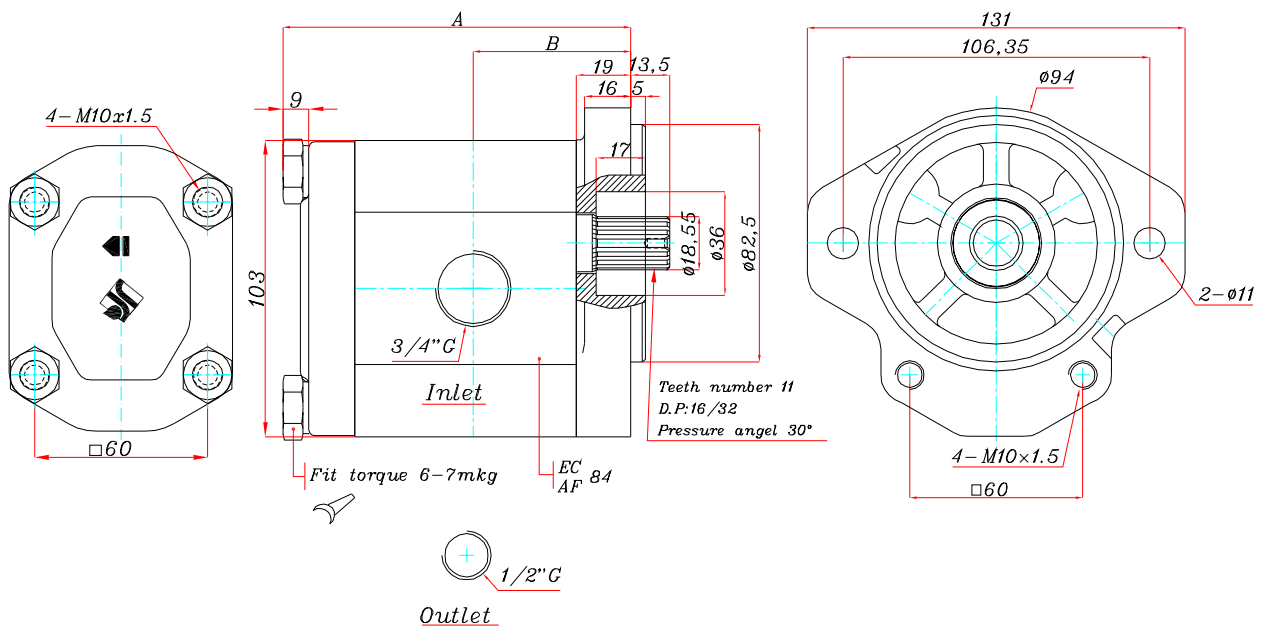
Pump type	Displacement (cm ³ /rev)	MAX Speed (rpm)
310-1L18CCE37FT/VC	12	3500
Relief valve	120±15 bar	
Flow control valve	12 ⁺² / _{-1.5} Lit/min	



Pump with flange type 38
 Model L

353-1L27CG38R
 351-1L35CG38R
 352-1L46CG38R

SHAFT C(G22)
 OUTLET & INLET R
 FLANGE 38



Model	A	B
351-1L35CG38R	123.6	56.5
352-1L46CG38R	136.1	62
353-1L27CG38R	114.6	49

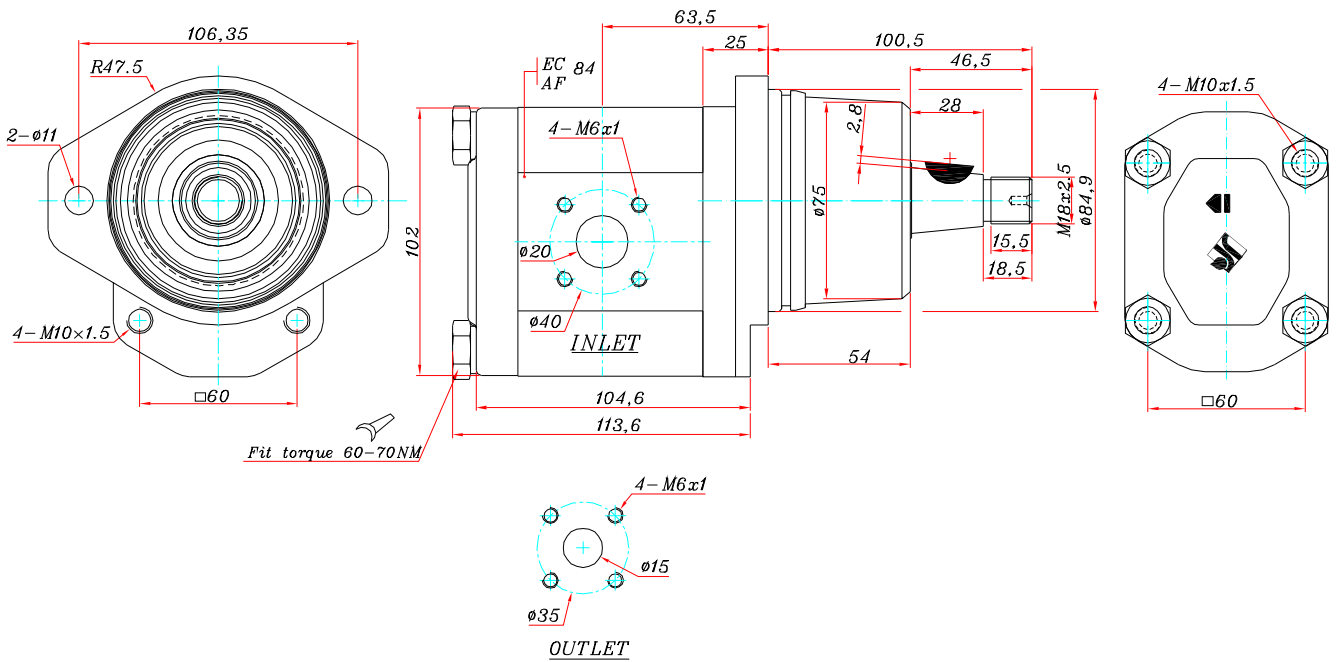


Pump with flange type 21
 Model L

314-5L27CV21F

SHAFT V(V02)
 OUTLET & INLET F
 FLANGE 21

USING FOR BUS(SHARGE PUMP)



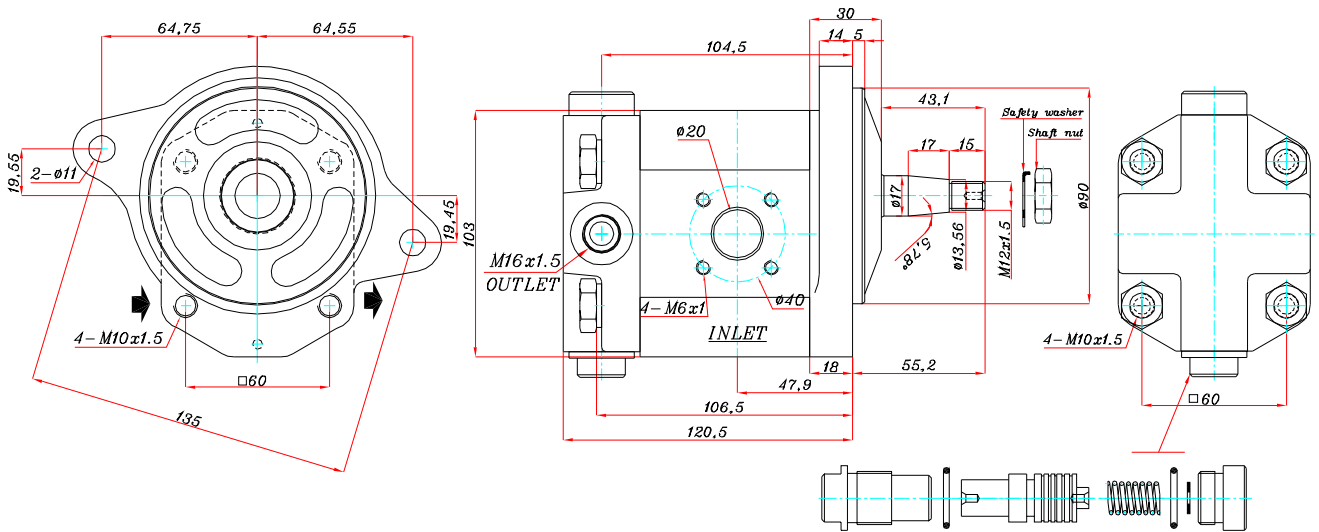


Pump with flange type 32
 Model L

364-1L27CJ32FT/C

SHAFT J(J02)
 OUTLET & INLET FT
 FLANGE 32

USING FOR BUS(STEERING PUMP)



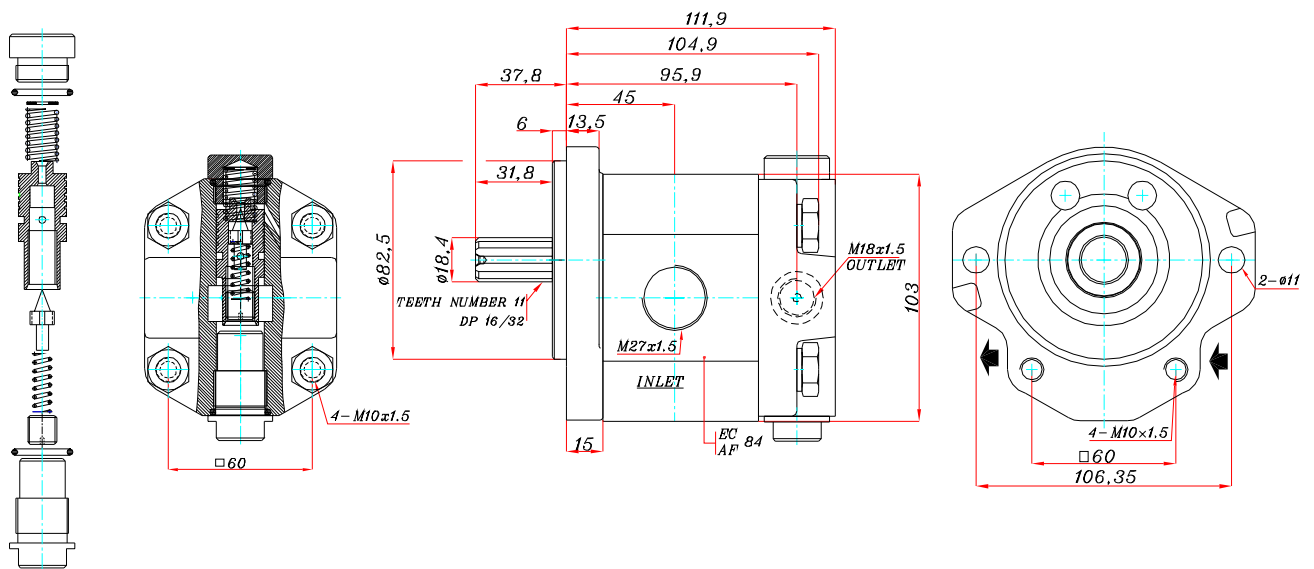
Pump type	Displacement (cm ³ /rev)	PUMP FLOW RATE (Lit/min) 1500 (rpm)	MAX Pressure (bar)	MAX Speed (rpm)
364-1L27CJ32FT/C	18	27 Lit/min	250	3200
Relief valve	-			
Flow control valve	9 Lit/min			



Pump with flange type 18
Model L

362-1L22CCG18RT/VC

SHAFT G(C09)
OUTLET & INLET RT
FLANGE 18



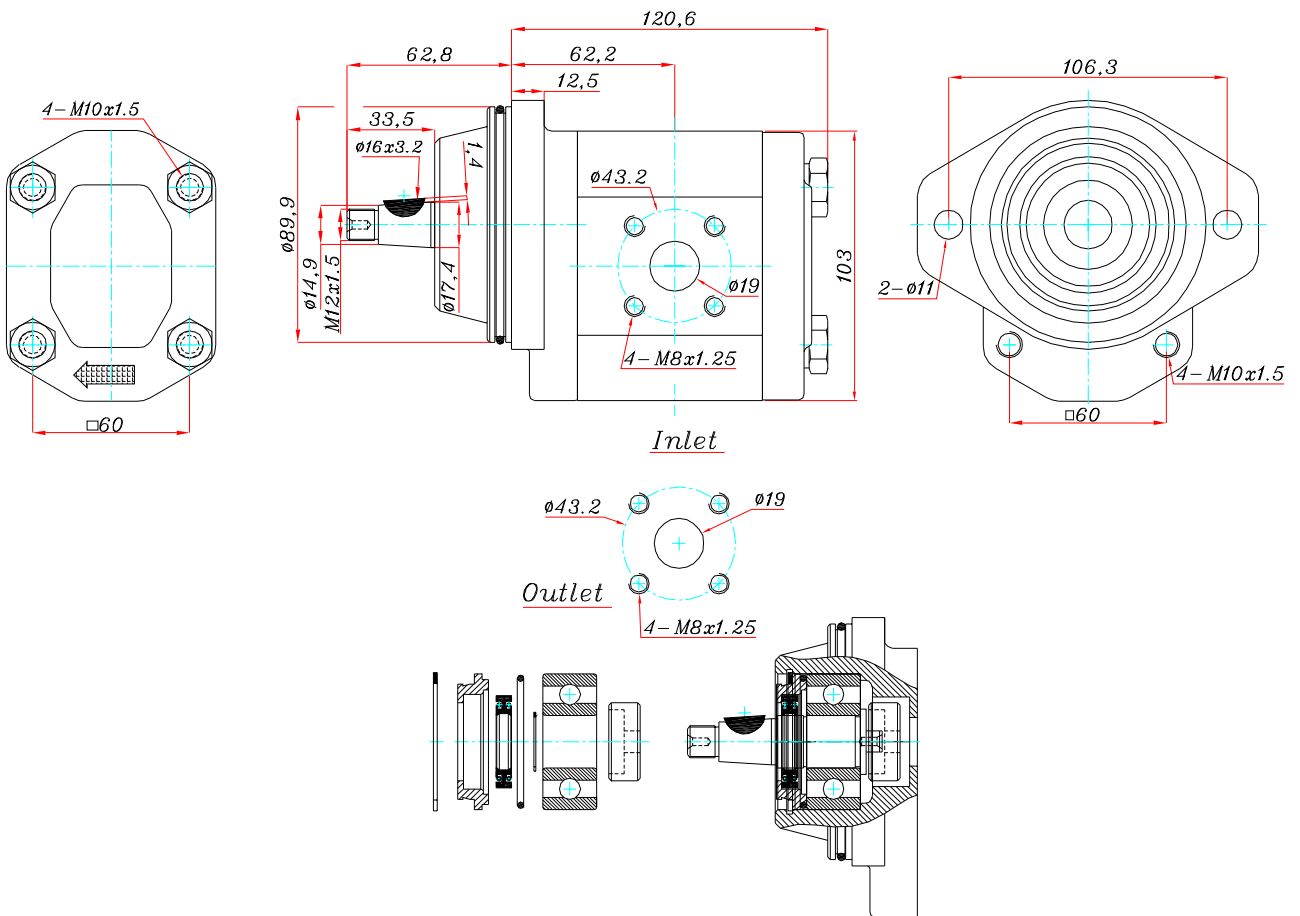
Pump type	Displacement (cm ³ /rev)	MAX Pressure (bar)	MAX Speed (rpm)	Min Speed (rpm)
362-1L22CCG18RT/VC	14.6	275	3500	500
Relief valve	90±5 bar			
Flow control valve	11±1 Lit/min (8 cc)			



Pump with flange type 33
 Model L

365-5L27CCV33F
 USING FOR VOLVO Tractor

SHAFT V(V05)
 OUTLET & INLET F
 FLANGE 33



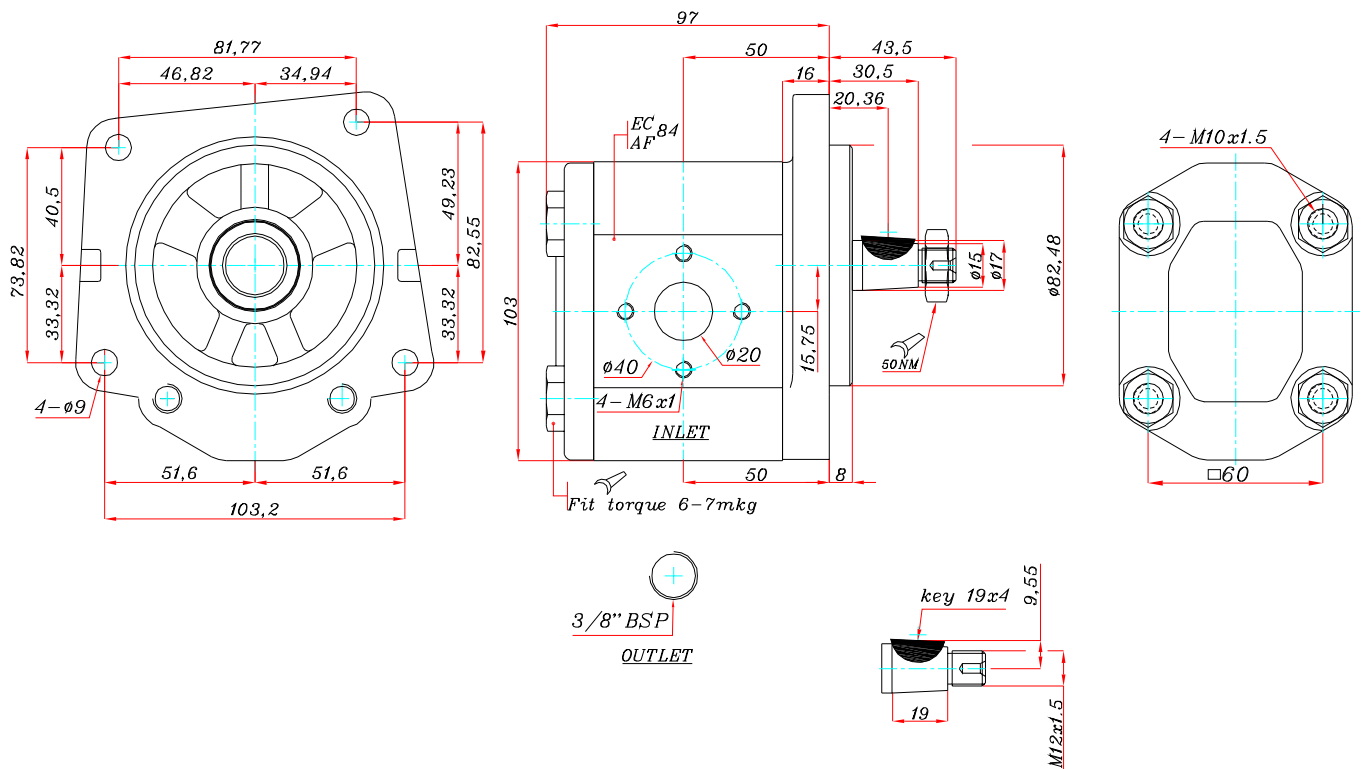


Pump with flange type 04
 Model L

305-1L22CA04BR

SHAFT A(A01)
 OUTLET & INLET BR
 FLANGE 04

USING FOR EBR0 Tractor



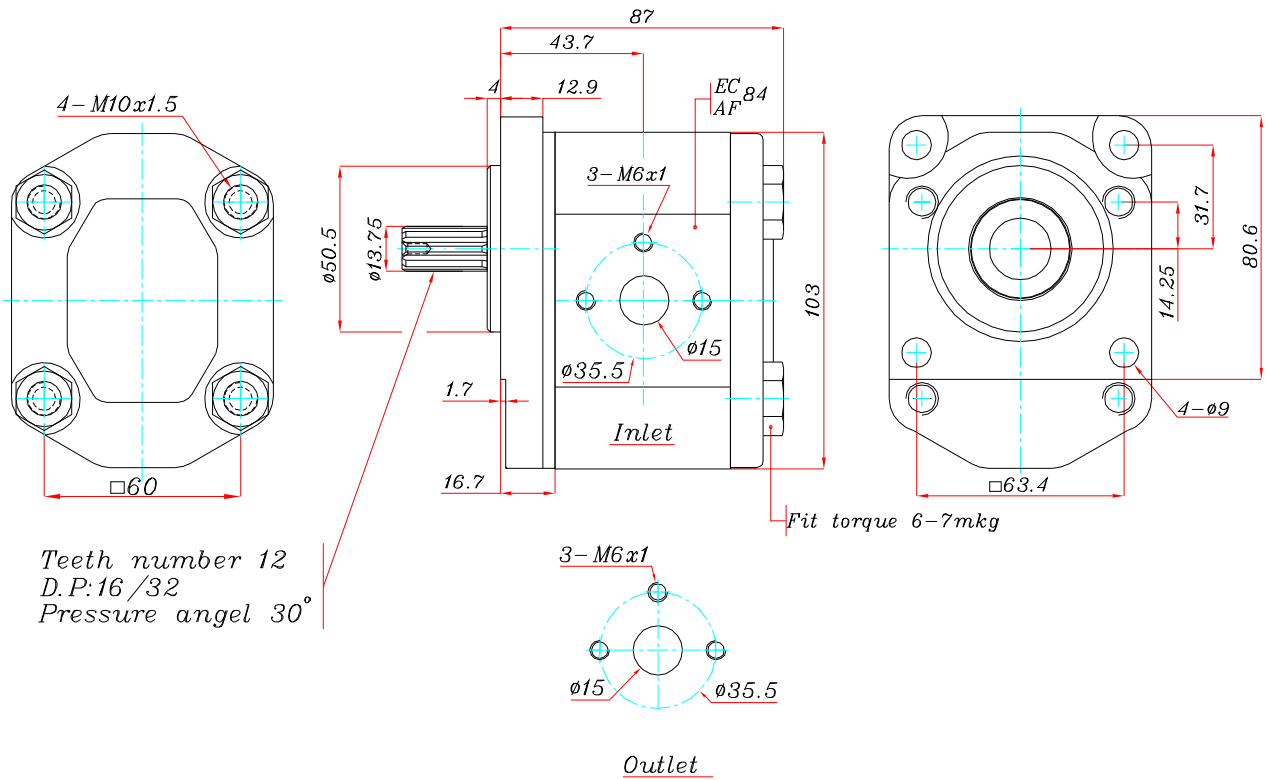


Pump with flange type 02
 Model L

337-1L12CCG02C

SHAFT C(C06)
 OUTLET & INLET C
 FLANGE 02

USING FOR ROAD CONSUBTION

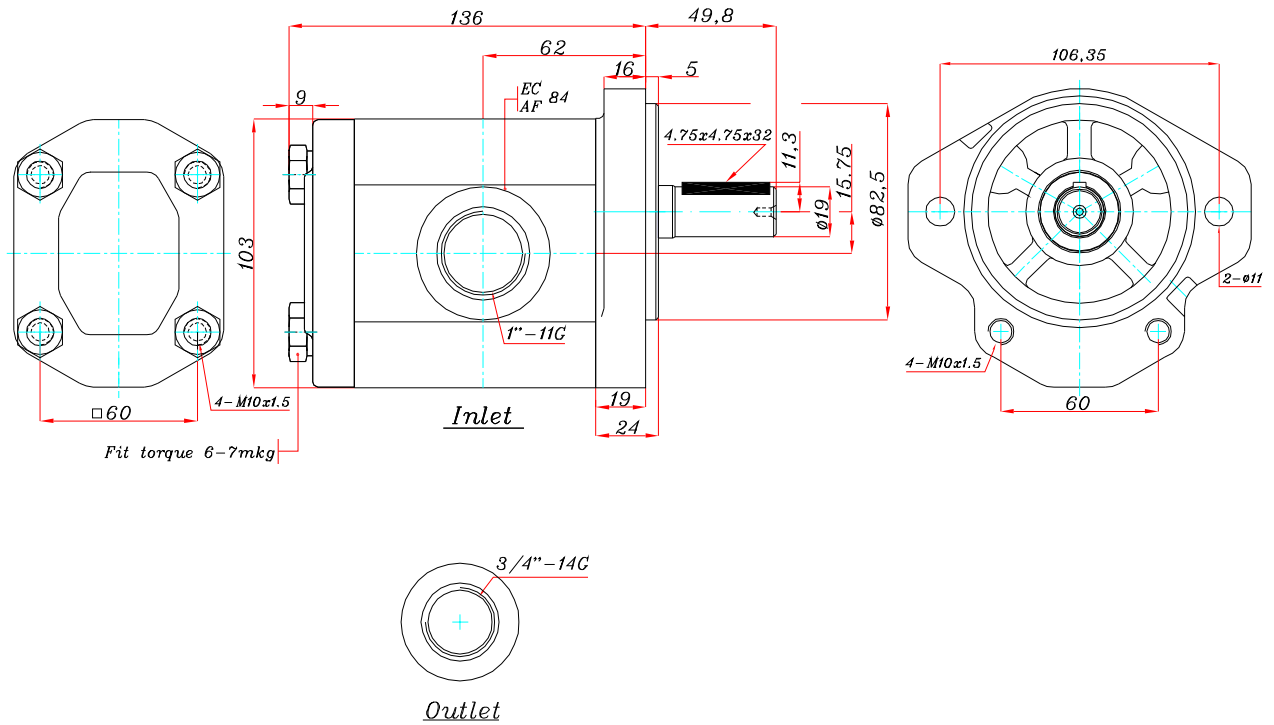




Pump with flange type 41
 Model L

336-1L46CCH41R

SHAFT H(H02)
 OUTLET & INLET R
 FLANGE 41

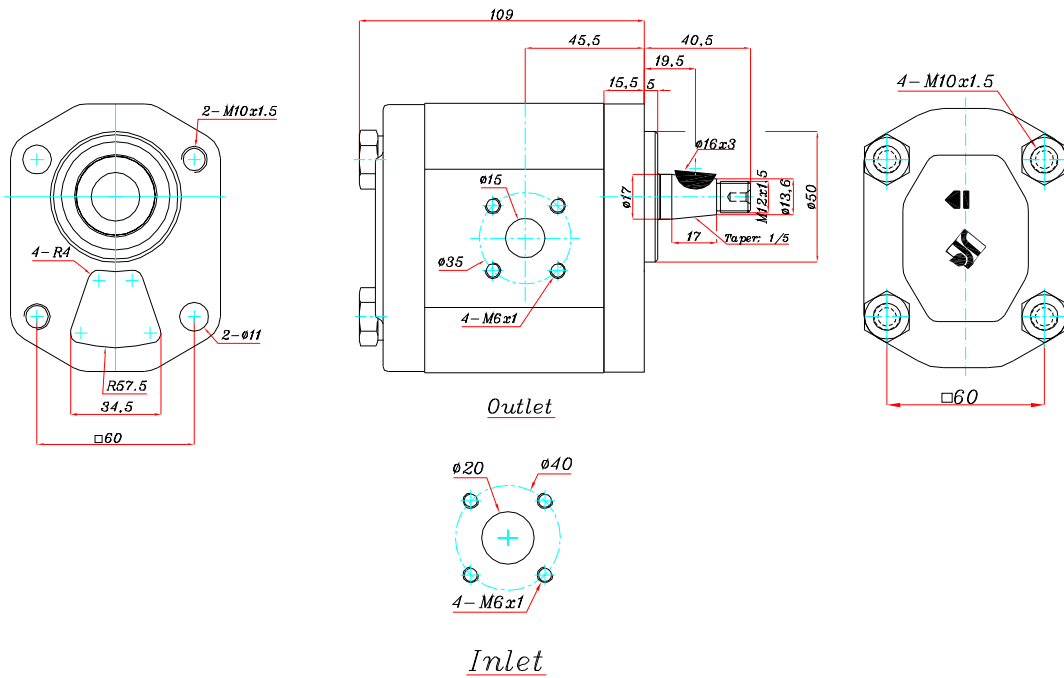




Pump with flange type 50
 Model L

320-1L25CCJ50F
 USING FOR DEUTZ Tractor

SHAFT J(J01)
 OUTLET & INLET F
 FLANGE 50

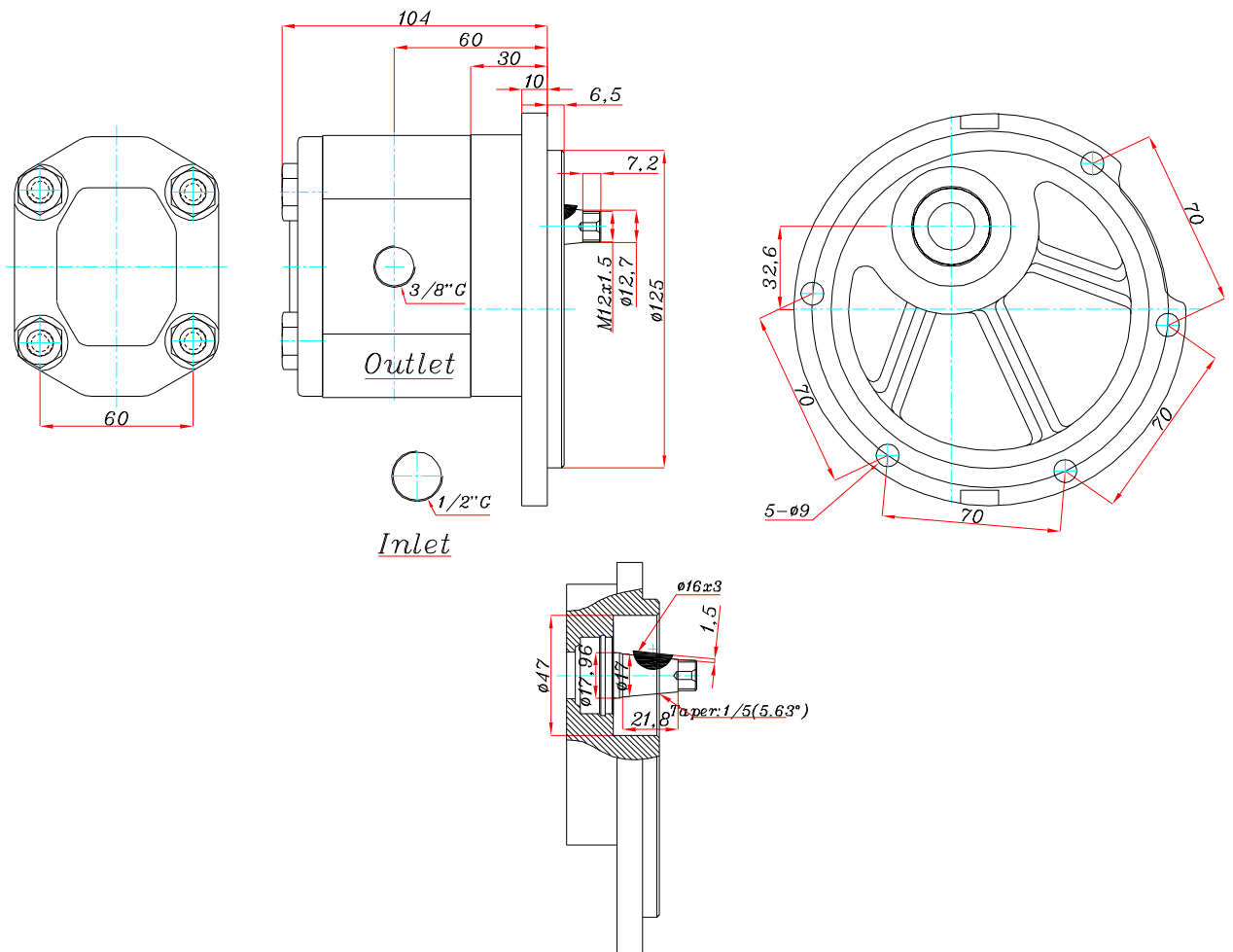




Pump with flange type 11
 Model L

323-1L16CCS11R
 USING FOR STEYR Tractor

SHAFT S(S01)
 OUTLET & INLET R
 FLANGE 11

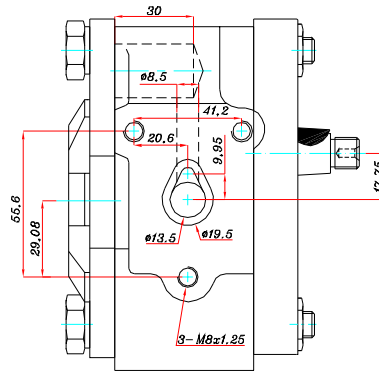
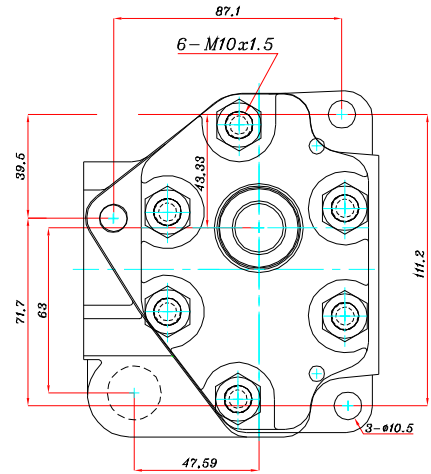
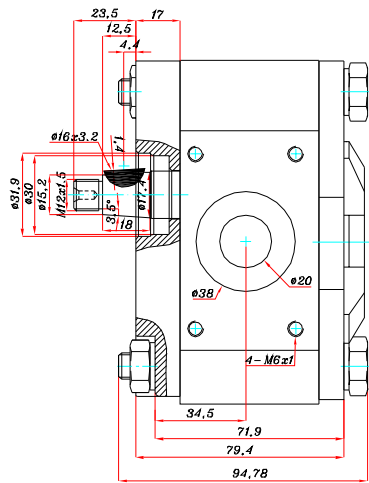
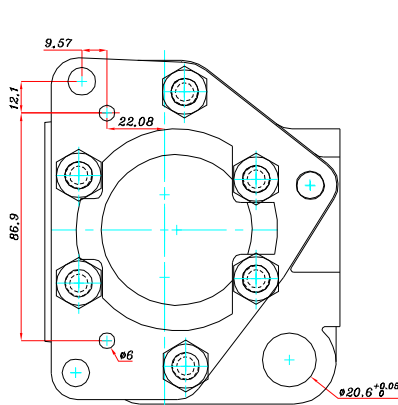




Pump with flange type 28
 Model L

347-1L22CCE28F

SHAFT E(E04)
 OUTLET & INLET F
 FLANGE 28

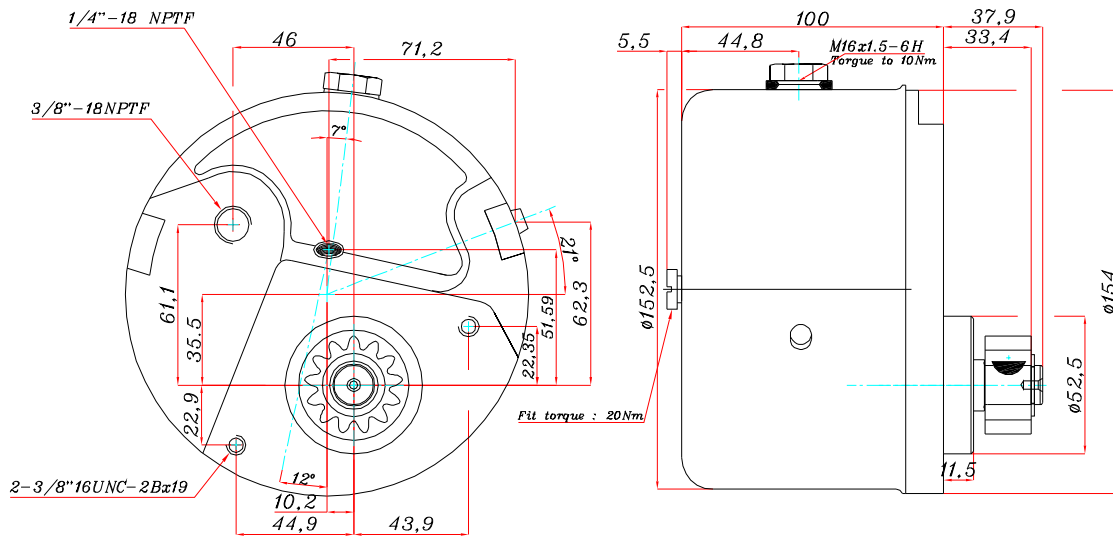




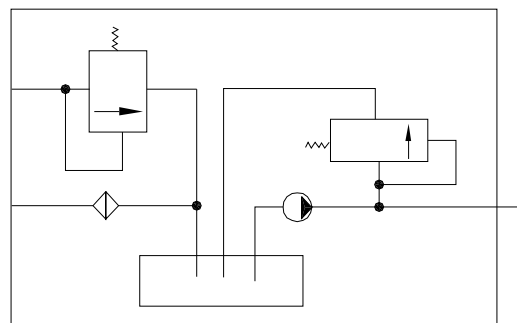
Pump with flange type 03
Model L

319-5L7.5CD03RT/VD
USING FOR MF 240,250,255 Tractor

SHAFT D(D01)
OUTLET & INLET RT
FLANGE 03



DRIVER GEAR DATA	
Number of teeth	13
Pitch dia	33.02
D.P.	10
Pressure angle	20°



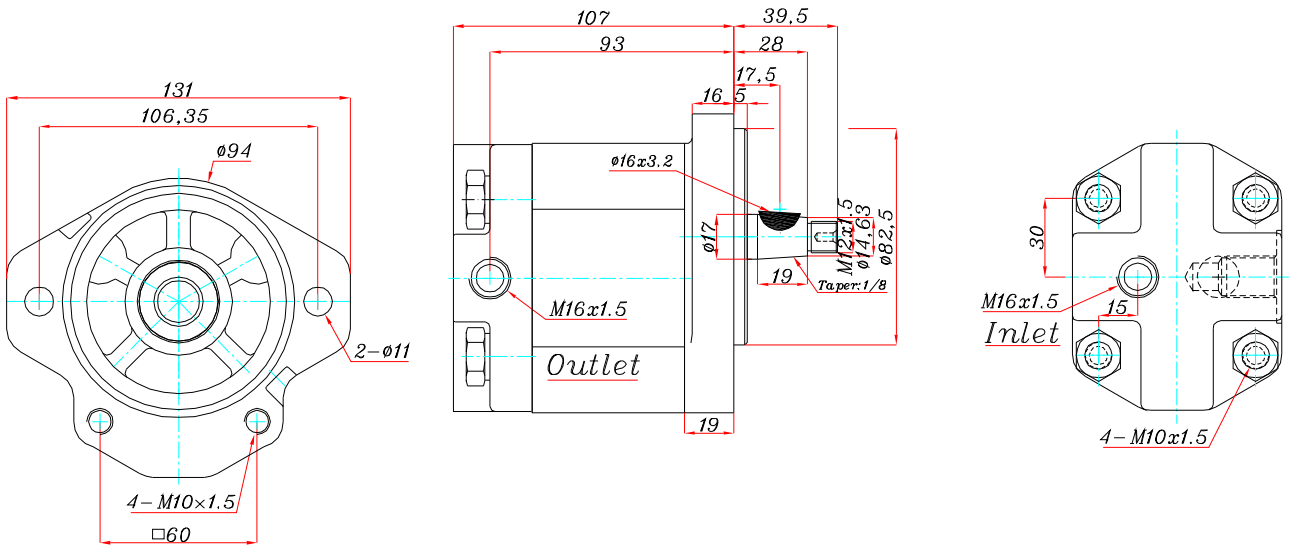
Pump type	Displacement (cm ³ /rev)	MAX Pressure (bar)	MAX Speed (rpm)	Min Speed (rpm)
319-5L7.5CD03RT/VD	CC	300	4000	500
Relief valve	70 ± 5 bar			



Pump with flange type 09
 Model L

359-1L16CCE09T
 USING FOR FORD Tractor

SHAFT E(E01)
 OUTLET & INLET T
 FLANGE 09

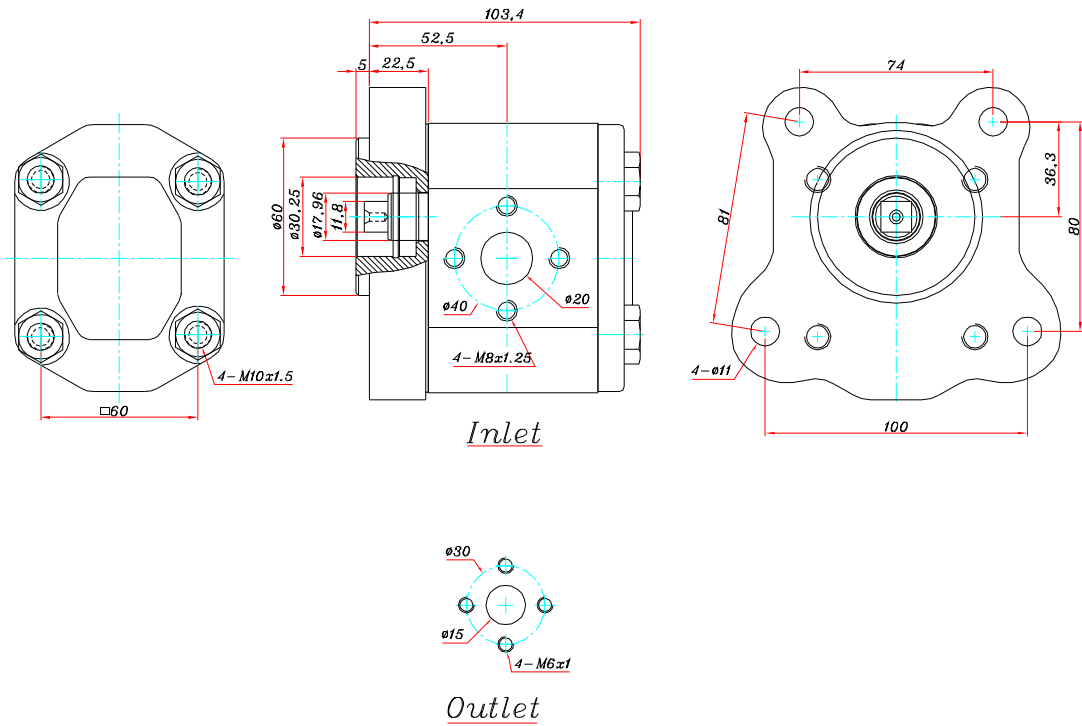




Pump with flange type 08
 Model L

330-1L22CCZ08B
 USING FOR ZETOR Tractor

SHAFT Z(Z01)
 OUTLET & INLET B
 FLANGE 08

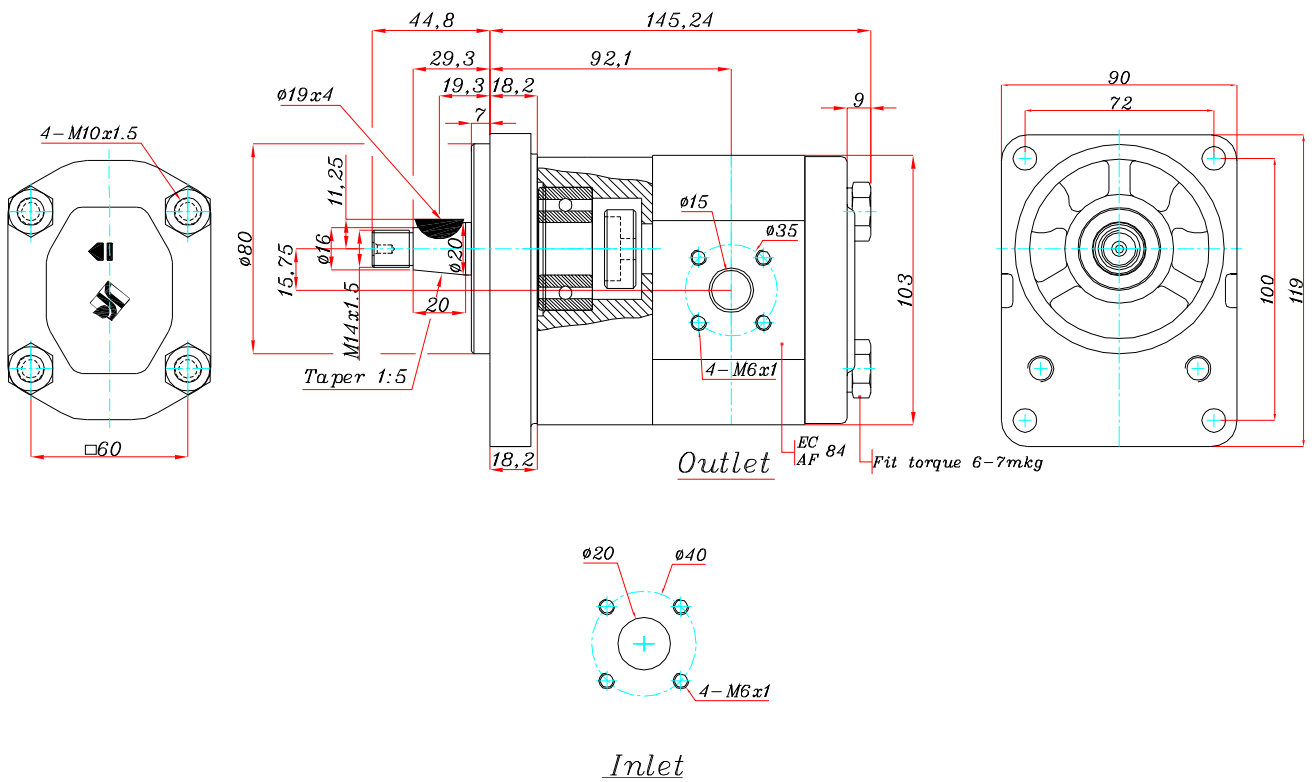




Pump with flange type 47
Model L

360-5L16CCV47F

SHAFT V(V01)
OUTLET & INLET F
FLANGE 47

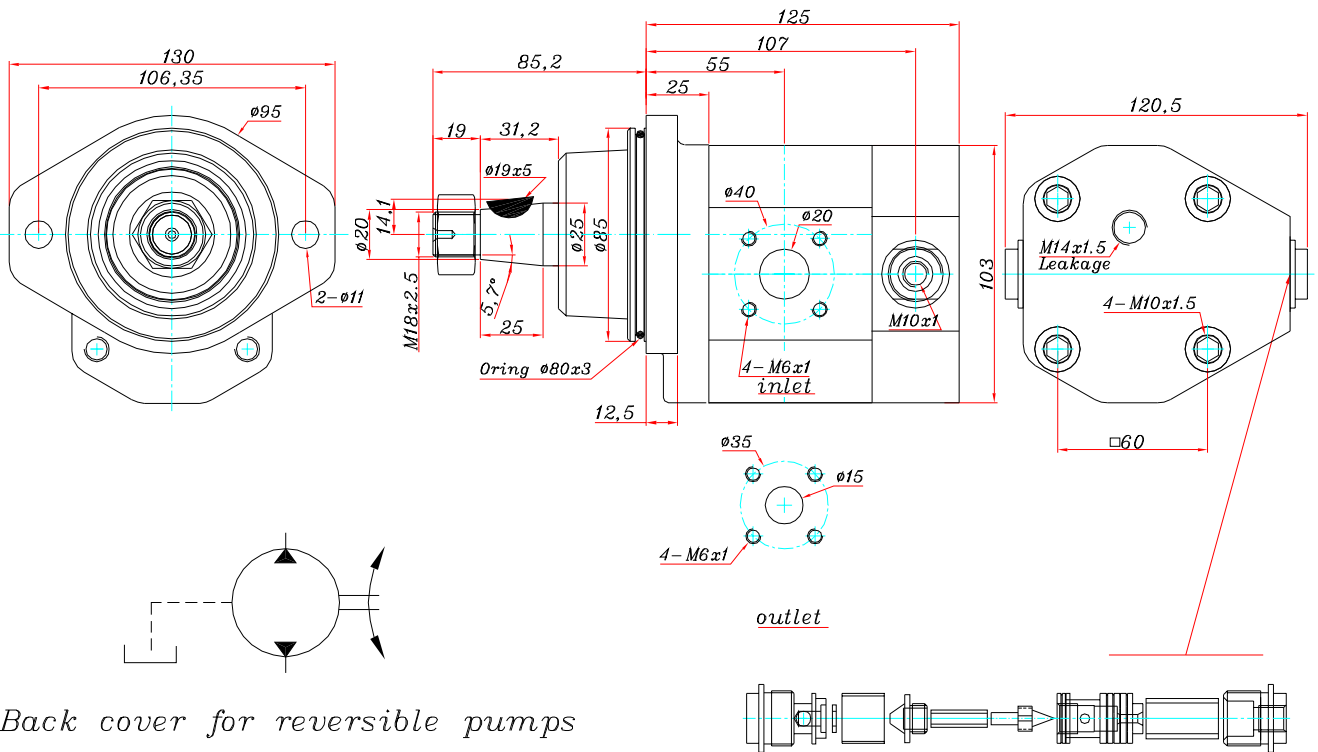




Hidro gear motor
with flange type 30
Model L

363-5L22RV30F/VC
HYDRAULIC GEAR MOTOR (FOR BUS)

SHAFT V(V04)
OUTLET & INLET F
FLANGE 30



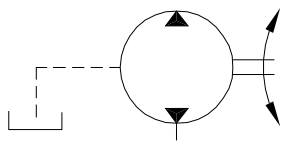
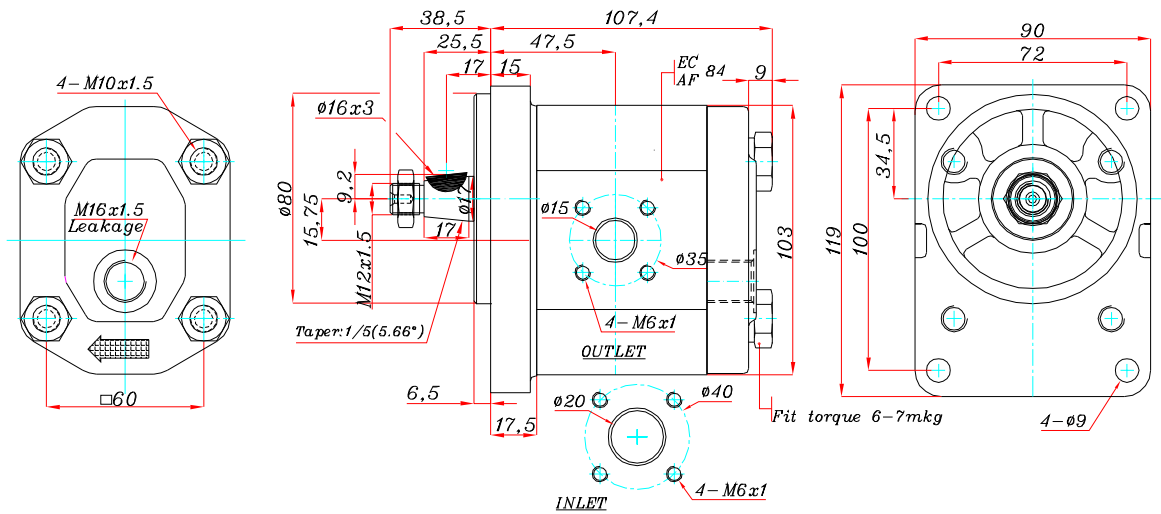
Pump type	Displacement (cm ³ /rev)	PUMP FLOW RATE (Lit/min) 1500 (rpm)	MAX Pressure (bar)	MAX Speed (rpm)
363-5L22RV30F/VC	14.6	22 Lit/min	275	3500
Relief valve	170 bar			
Flow control valve	MIN SPEED 700rpm AND MAX SMEED 1700 rpm			



Hidro gear motor
 with flange type 48
 Model L

357-1L22RJ48F
 HYDRAULIC GEAR MOTOR

SHAFT J(J01)
 OUTLET & INLET F
 FLANGE 48



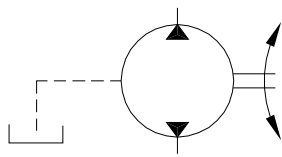
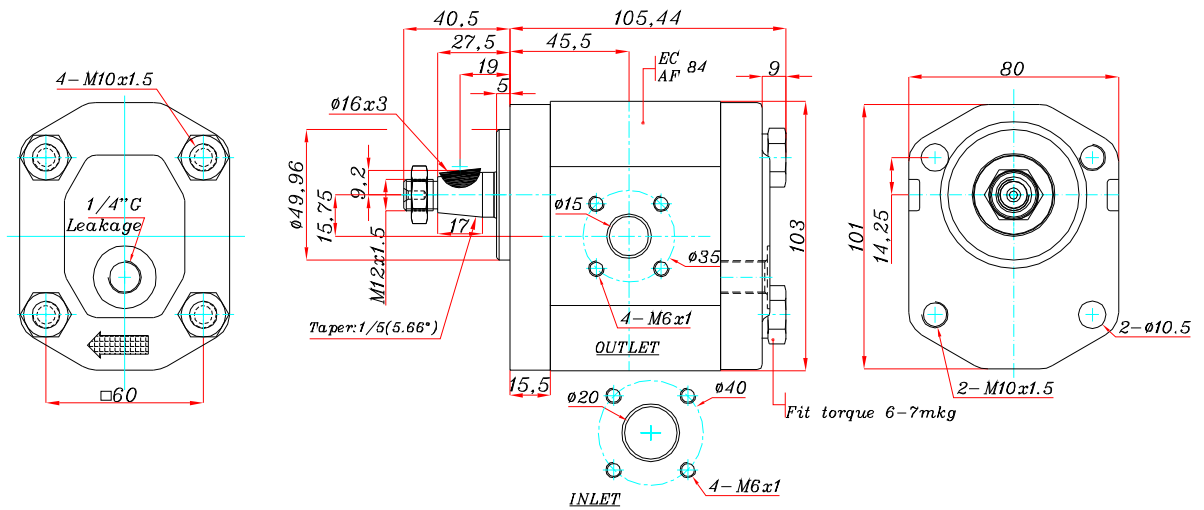
Back cover for reversible pumps



Hidro gear motor
 with flange type 44
 Model L

358-1L22RJ44F
 HYDRAULIC GEAR MOTOR

SHAFT J(J01)
 OUTLET & INLET F
 FLANGE 44



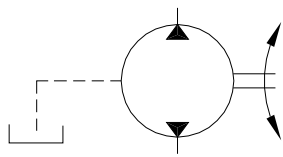
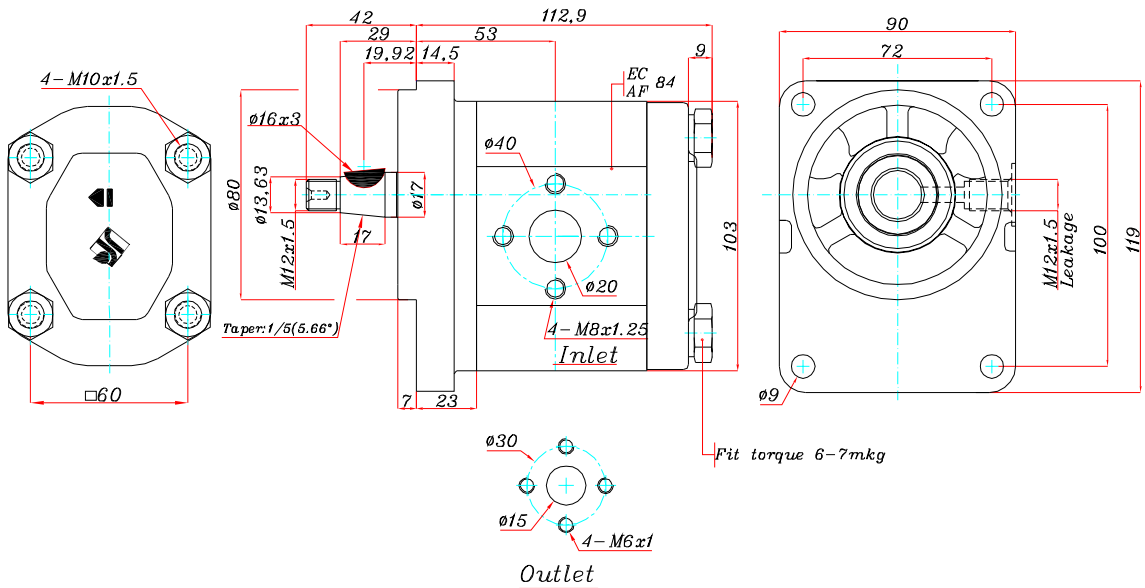
Back cover for reversible pumps



Hidro gear motor
 with flange type 46
 Model L

356-1L22RJ46B
 HYDRAULIC GEAR MOTOR

SHAFT J(J13)
 OUTLET & INLET B
 FLANGE 46



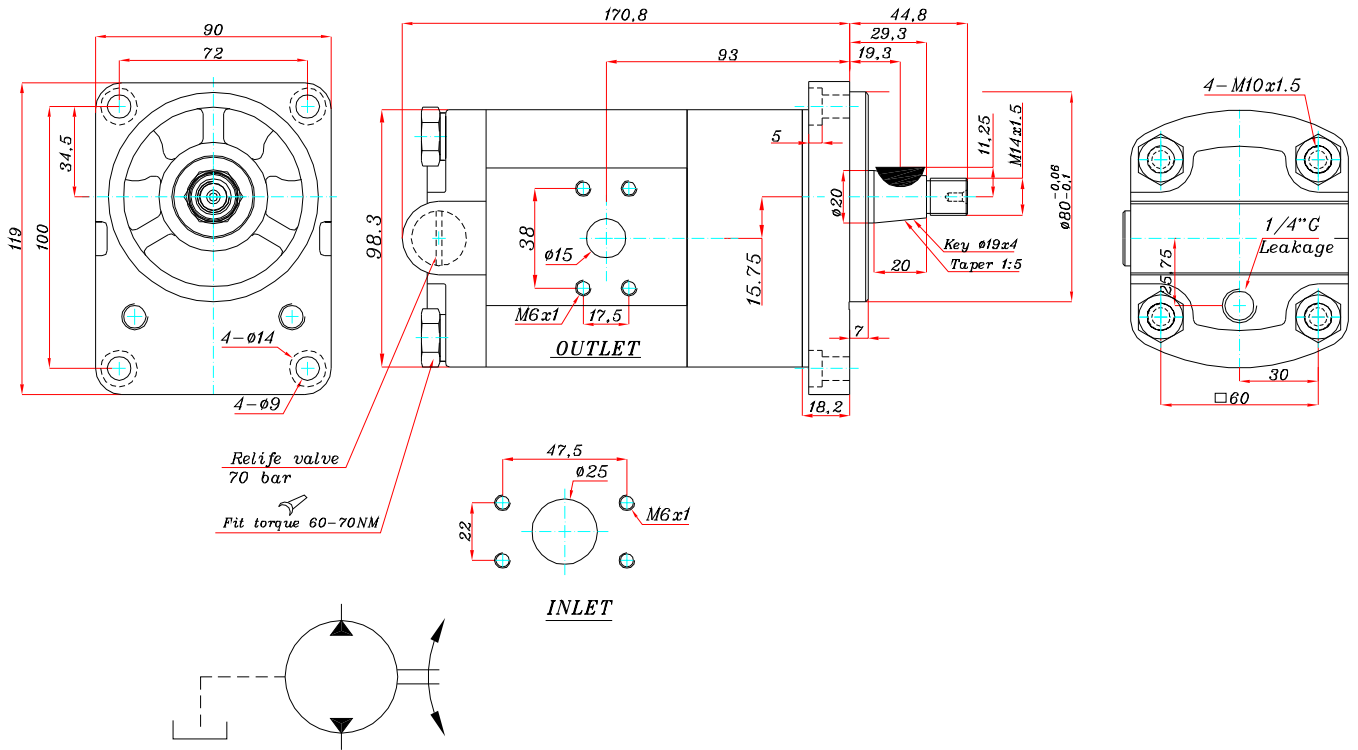
Back cover for reversible pumps



Hidro gear motor
with flange type 49
Model L

380-5L32RV49F/V
HYDRAULIC GEAR MOTOR

SHAFT V
OUTLET & INLET F
FLANGE 49



Back cover for reversible pumps

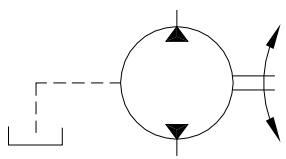
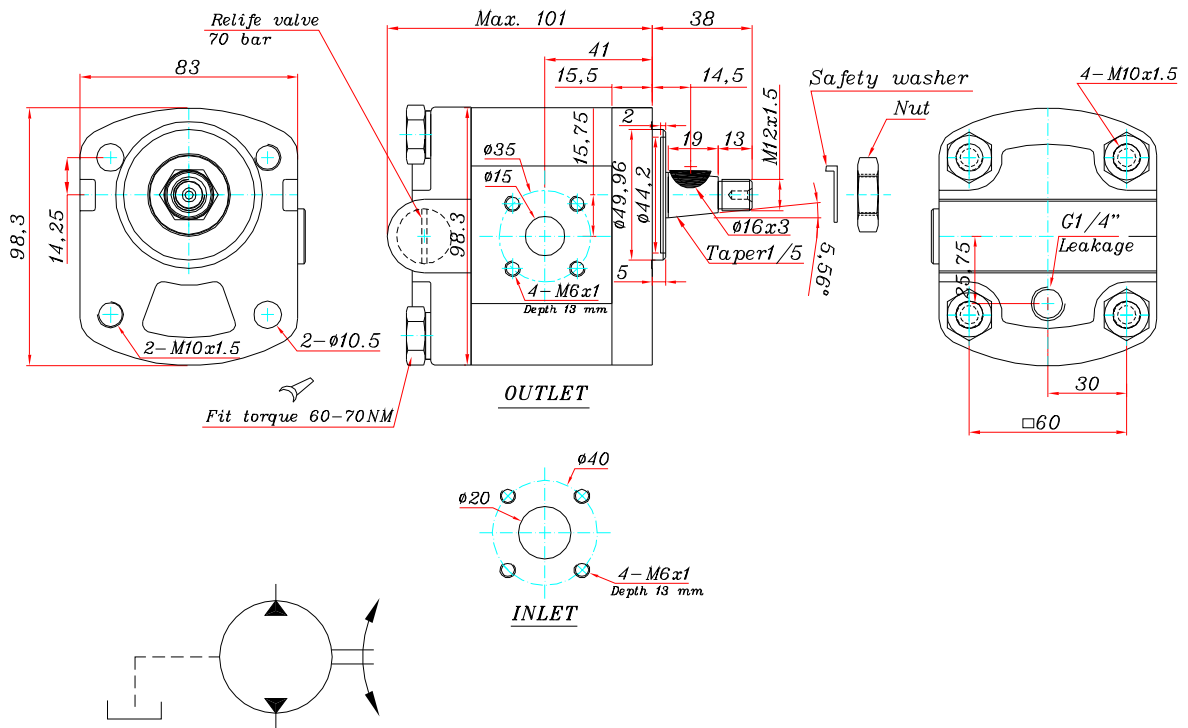
Pump Model	Displacement (cm ³ /v)	Cont Max Pressure (bar)	Intermitent Max Pressure (bar)	Max Speed (rpm)	Min Speed (rpm)
380-5L32RV49F/V	21.3	70	-	-	-
Relief valve		70±5 bar			



Hidro gear motor
with flange type 43
Model L

379-1L12RJ43F/V
HYDRAULIC GEAR MOTOR

SHAFT W
OUTLET & INLET F
FLANGE 43



Back cover for reversible pumps

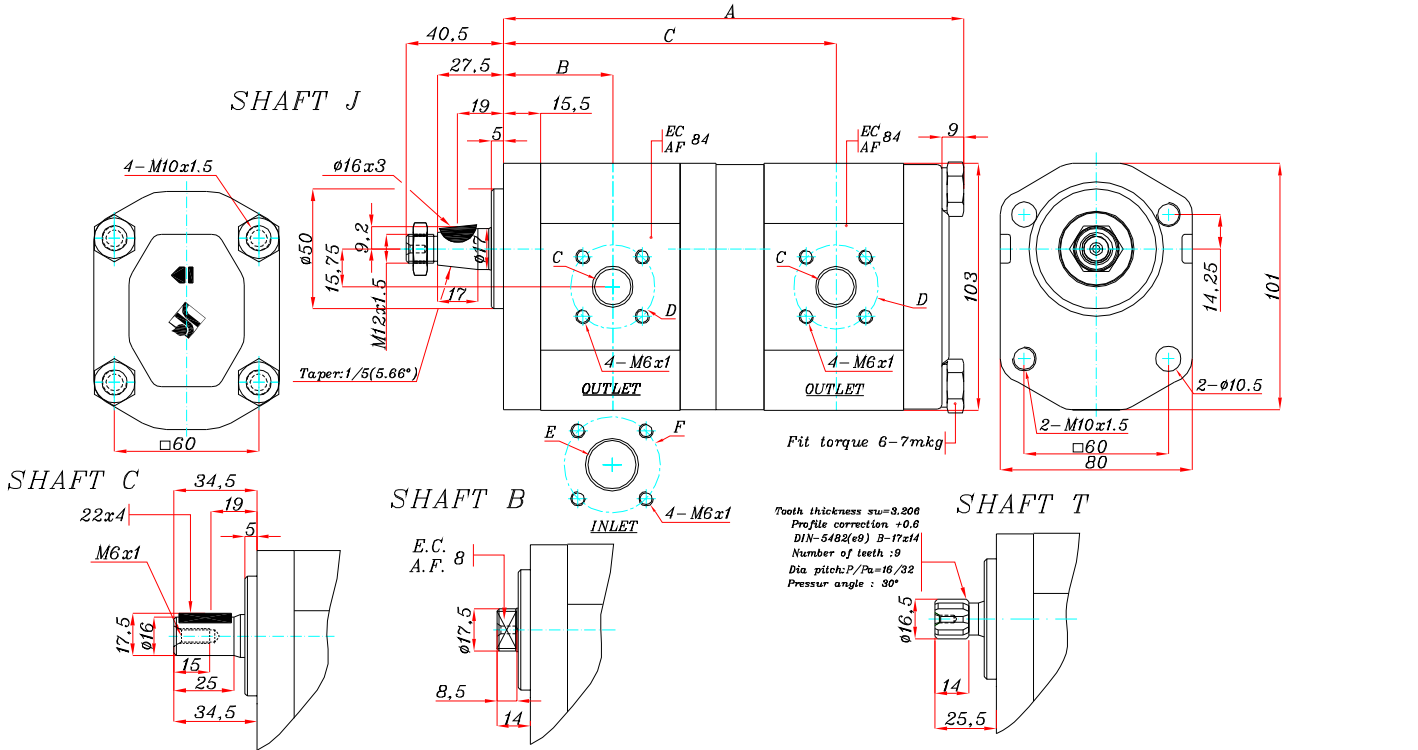
Pump Model	Displacement (cm ³ /v)	Cont Max Pressure (bar)	Intermitent Max Pressure (bar)	Max Speed (rpm)	Min Speed (rpm)
379-1L12RJ43F/V	8	70	-	-	-
Relief valve		70±5 bar			



Double pump with flange type 22
Model LM

301-1LM...(C/CC)J22F

SHAFT J&C&B&T (01)
OUTLET & INLET F
FLANGE 22



Model	A	B	C	Model	A	B	C	Outlet		Inlet		Model	A	B	C	Model	A	B	C	Outlet		Inlet		
								C	D	E	F									C	D	E	F	
301-1LM6-6CA22F	169.4	36.5	118.4	301-1LM22-9CA22F	190.7	45.5	138.8	15	35	20	40	301-1LM32-16CA22F	210.2	53	157.1	301-1LM40-40CA22F	247	55.8	176.5	15	35	20	40	
301-1LM7.5-6CA22F	171.1		120.1	301-1LM22-12CA22F	193.9		140.9					301-1LM32-18CA22F	212.4			301-1LM46-6CA22F	214.5	58.5	163.5					
301-1LM7.5-7.5CA22F	172.8			301-1LM22-14CA22F	196.1				301-1LM32-22CA22F	217			301-1LM46-7.5CA22F	216.2										
301-1LM9-6CA22F	172.8	39	121.8	301-1LM22-16CA22F	198.4		145.3		301-1LM32-25CA22F	220.4			301-1LM46-9CA22F	217.9										
301-1LM9-7.5CA22F	174.5			301-1LM22-18CA22F	200.6				301-1LM32-27CA22F	222.7			301-1LM46-12CA22F	221.1										
301-1LM9-9CA22F	176.2		124.3	301-1LM22-22CA22F	205.2				301-1LM32-32CA22F	228.8			301-1LM46-14CA22F	223.3										
301-1LM12-6CA22F	176	41.1	125	301-1LM25-6CA22F	190.7		139.7		301-1LM35-6CA22F	202	53	151	301-1LM46-16CA22F	225.6										
301-1LM12-7.5CA22F	177.7			301-1LM25-7.5CA22F	192.4		142.2		301-1LM35-7.5CA22F	203.7			301-1LM46-18CA22F	227.8										
301-1LM12-9CA22F	179.4		127.5	301-1LM25-9CA22F	194.1		144.3		301-1LM35-9CA22F	205.4			301-1LM46-22CA22F	232.4										
301-1LM12-12CA22F	182.6		129.6	301-1LM25-12CA22F	197.3				301-1LM35-12CA22F	208.6			301-1LM46-25CA22F	235.8										
301-1LM14-6CA22F	178.2		127.2	301-1LM25-14CA22F	199.5		148.7		301-1LM35-14CA22F	210.8			301-1LM46-27CA22F	238.1										
301-1LM14-7.5CA22F	179.9			301-1LM25-16CA22F	201.8				301-1LM35-16CA22F	213.1			301-1LM46-32CA22F	244.2										
301-1LM14-9CA22F	181.6		129.7	301-1LM25-18CA22F	204		151		301-1LM35-18CA22F	215.3			301-1LM46-35CA22F	247.1										
301-1LM14-12CA22F	184.8		131.8	301-1LM25-22CA22F	208.6				301-1LM35-22CA22F	219.9			301-1LM46-40CA22F	253.3										
301-1LM14-14CA22F	187			301-1LM25-25CA22F	212		142		301-1LM35-25CA22F	223.3			301-1LM46-46CA22F	259.6										
301-1LM16-6CA22F	180.5	45.5	129.5	301-1LM27-6CA22F	193		144.5		301-1LM35-27CA22F	225.6			301-1LM52-6CA22F	221.4	62.7									
301-1LM16-7.5CA22F	182.2			301-1LM27-7.5CA22F	194.7		146.6		301-1LM35-32CA22F	231.7			301-1LM52-7.5CA22F	223.1										
301-1LM16.9CA22F	183.9		132	301-1LM27-9CA22F	196.4		151		301-1LM35-35CA22F	234.6			301-1LM52-9CA22F	224.8										
301-1LM16-12CA22F	187.1		134.1	301-1LM27-12CA22F	199.6				301-1LM40-6CA22F	208.2	55.8	157.2	301-1LM52-12CA22F	228										
301-1LM16-14CA22F	189.3			301-1LM27-14CA22F	201.8				301-1LM40-7.5CA22F	209.9			301-1LM52-14CA22F	230.2										
301-1LM16-16CA22F	191.6		138.5	301-1LM27-16CA22F	204.1				301-1LM40-9CA22F	211.6			301-1LM52-16CA22F	232.5										
301-1LM16-6CA22F	182.7		131.7	301-1LM27-18CA22F	206.3				301-1LM40-12CA22F	214.8			301-1LM52-18CA22F	234.7										
301-1LM16.7.5CA22F	184.4			301-1LM27-22CA22F	210.9				301-1LM40-14CA22F	217			301-1LM52-22CA22F	239.3										
301-1LM16-9CA22F	186.1		134.2	301-1LM27-25CA22F	214.3				301-1LM40-16CA22F	219.3			301-1LM52-25CA22F	242.7										
301-1LM16.12CA22F	189.3		136.3	301-1LM27-27CA22F	216.6				301-1LM40-18CA22F	221.5			301-1LM52-27CA22F	245										
301-1LM16-14CA22F	191.5			301-1LM32-6CA22F	199.1	51.2	148.1		301-1LM40-22CA22F	226.1			301-1LM52-32CA22F	251.1										
301-1LM16.16CA22F	193.8		140.7	301-1LM32-7.5CA22F	200.8				301-1LM40-25CA22F	229.5			301-1LM52-35CA22F	254										
301-1LM16.18CA22F	196			301-1LM32-9CA22F	202.5				301-1LM40-27CA22F	231.8			301-1LM52-40CA22F	260.2										
301-1LM22-6CA22F	187.3	45.5	136.3	301-1LM32-12CA22F	205.7		150.6		301-1LM40-32CA22F	237.9			301-1LM52-46CA22F	266.5										
301-1LM22-7.5CA22F	189			301-1LM32-14CA22F	207.9		152.7		301-1LM40-35CA22F	240.8			301-1LM52-52CA22F	273.4										

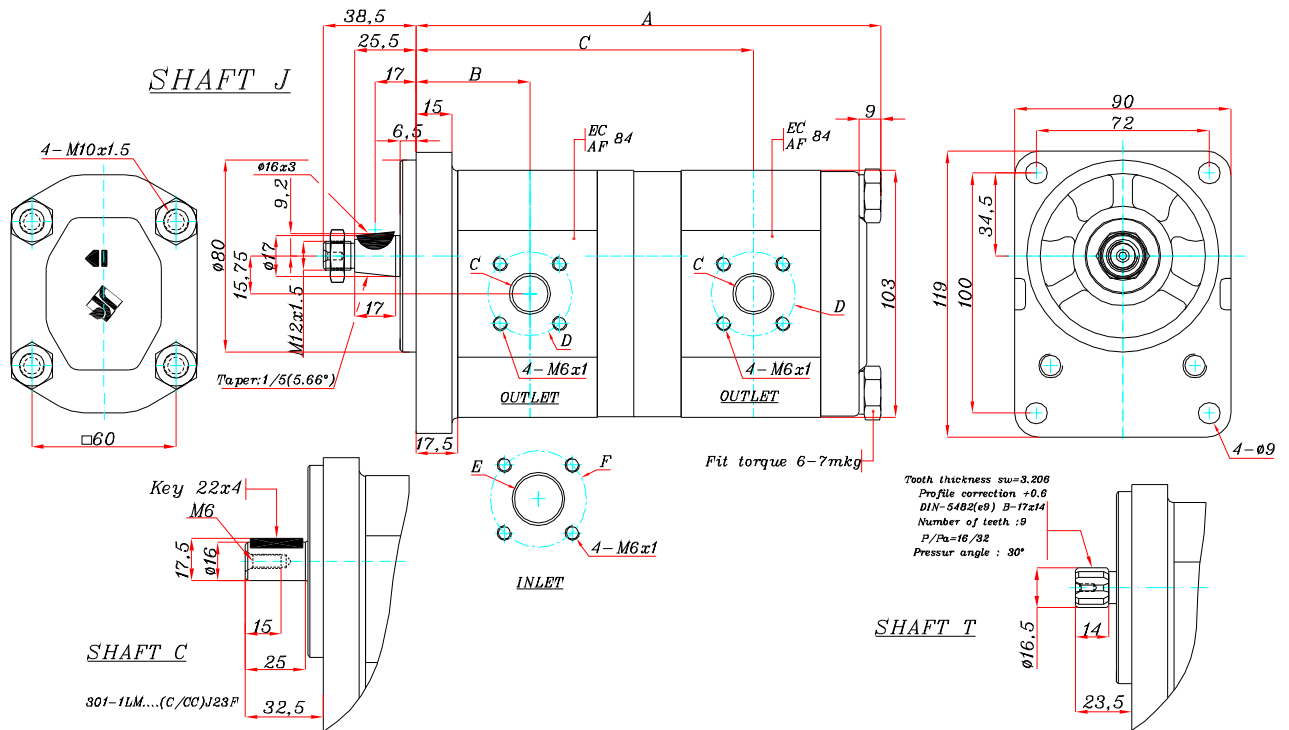
In the reversible pumps, threaded ports available R only, both ports same dimension that corresponds to the suction dimension. The drawing above shows a pump turning clockwise. For anti-clockwise rotation sense, replace C by CC in which case suction and pressure ports shall be inverted.



Double pump with flange type 23
Model LM

301-1LM...(C/CC)J23F

SHAFT J&C&T (01)
OUTLET & INLET F
FLANGE 23



Model	A	B	C	Model	A	B	C	Outlet		Inlet		Model	A	B	C	Model	A	B	C	Outlet		Inlet	
								C	D	E	F									C	D	E	F
301-1LM6-6CA23F	171.4	38.5	120.4	301-1LM22-9CA23F	192.7	47.5	140.8	15	35	*	40	301-1LM32-16CA23F	212.2	55	159.1	301-1LM40-40CA23F	249	57.8	178.5	15	35	20	40
301-1LM7.5-6CA23F	173.1		122.1	301-1LM22-12CA23F	195.9		142.9					301-1LM32-18CA23F	214.4			301-1LM46-6CA23F	216.5	60.5	165.5				
301-1LM7.5-7.5CA23F	174.8			301-1LM22-14CA23F	198.1			301-1LM32-22CA23F	219	301-1LM46-7.5CA23F	218.2												
301-1LM9-8CA23F	174.8	41	123.8	301-1LM22-16CA23F	200.4		147.3	301-1LM32-25CA23F	222.4	301-1LM46-9CA23F	219.9		168										
301-1LM9-7.5CA23F	176.5			301-1LM22-18CA23F	202.6			301-1LM32-27CA23F	224.7	301-1LM46-12CA23F	223.1		170.1										
301-1LM9-9CA23F	178.2			301-1LM22-22CA23F	207.2			301-1LM32-32CA23F	230.8	301-1LM46-14CA23F	225.3												
301-1LM2-6CA23F	178	43.1	127	301-1LM25-6CA23F	192.7		141.7	301-1LM35-6CA23F	204	301-1LM46-16CA23F	227.6		174.5										
301-1LM2-7.5CA23F	179.7			301-1LM25-7.5CA23F	194.4		205.7	301-1LM46-18CA23F	229.8														
301-1LM2-9CA23F	181.4		129.5	301-1LM25-9CA23F	196.1		144.2	301-1LM35-8CA23F	207.4	301-1LM46-22CA23F	234.4												
301-1LM2-12CA23F	184.6		131.6	301-1LM25-12CA23F	199.3		146.3	301-1LM35-12CA23F	210.6	301-1LM46-25CA23F	237.8												
301-1LM4-6CA23F	180.2		129.2	301-1LM25-14CA23F	201.5			301-1LM35-14CA23F	212.8	301-1LM46-27CA23F	240.1												
301-1LM4-7.5CA23F	181.9			301-1LM25-16CA23F	203.8		150.7	301-1LM35-16CA23F	215.1	301-1LM46-32CA23F	246.2		180.2										
301-1LM4-9CA23F	183.6		131.7	301-1LM25-18CA23F	206			301-1LM35-18CA23F	217.3	301-1LM46-35CA23F	249.1		182										
301-1LM4-12CA23F	186.8		133.8	301-1LM25-22CA23F	210.6			301-1LM35-22CA23F	221.9	301-1LM46-40CA23F	255.3		184.8										
301-1LM4-14CA23F	189			301-1LM25-25CA23F	214			301-1LM35-25CA23F	225.3	301-1LM46-46CA23F	261.6		187.5										
301-1LM6-6CA23F	182.5	47.5	131.5	301-1LM27-6CA23F	195		144	301-1LM35-27CA23F	227.6	301-1LM52-6CA23F	223.4	64.7	172.4										
301-1LM6-7.5CA23F	184.2			301-1LM27-7.5CA23F	196.7		233.7	301-1LM52-7.5CA23F	225.1														
301-1LM6-9CA23F	185.9		134	301-1LM27-9CA23F	198.4		146.5	301-1LM35-32CA23F	236.6	301-1LM52-9CA23F	228.8		174.9										
301-1LM6-12CA23F	189.1		136.1	301-1LM27-12CA23F	201.6		148.6	301-1LM35-35CA23F	239.2	301-1LM52-12CA23F	230		177										
301-1LM6-14CA23F	191.3			301-1LM27-14CA23F	203.8			301-1LM40-6CA23F	210.2	301-1LM52-14CA23F	232.2												
301-1LM6-16CA23F	193.6		140.5	301-1LM27-16CA23F	206.1		153	301-1LM40-7.5CA23F	211.9	301-1LM52-16CA23F	234.5		181.4										
301-1LM6-18CA23F	184.7		133.7	301-1LM27-18CA23F	208.3			301-1LM40-9CA23F	213.6	301-1LM52-18CA23F	236.7												
301-1LM8-7.5CA23F	186.4			301-1LM27-22CA23F	212.9			301-1LM40-12CA23F	216.8	301-1LM52-22CA23F	241.3												
301-1LM8-9CA23F	188.1		136.2	301-1LM27-25CA23F	216.3			301-1LM40-14CA23F	219	301-1LM52-25CA23F	244.7												
301-1LM8-12CA23F	191.3		138.3	301-1LM27-27CA23F	218.6			301-1LM40-16CA23F	221.3	301-1LM52-27CA23F	247												
301-1LM8-14CA23F	193.5			301-1LM32-6CA23F	201.1	53.2	150.1	301-1LM40-18CA23F	223.5	301-1LM52-32CA23F	253.1		187.1										
301-1LM8-16CA23F	195.8		142.7	301-1LM32-7.5CA23F	202.8			301-1LM40-22CA23F	228.1	301-1LM52-35CA23F	256		188.9										
301-1LM8-18CA23F	198			301-1LM32-9CA23F	204.5		152.8	301-1LM40-25CA23F	231.5	301-1LM52-40CA23F	262.2		191.7										
301-1LM22-6CA23F	189.3	47.5	138.3	301-1LM32-12CA23F	207.7		154.7	301-1LM40-27CA23F	233.8	301-1LM52-46CA23F	268.5		194.4										
301-1LM22-7.5CA23F	191			301-1LM32-14CA23F	209.9		239.9	301-1LM52-52CA23F	275.4														
								301-1LM40-32CA23F	239.9				198.6										
								301-1LM40-35CA23F	242.8														

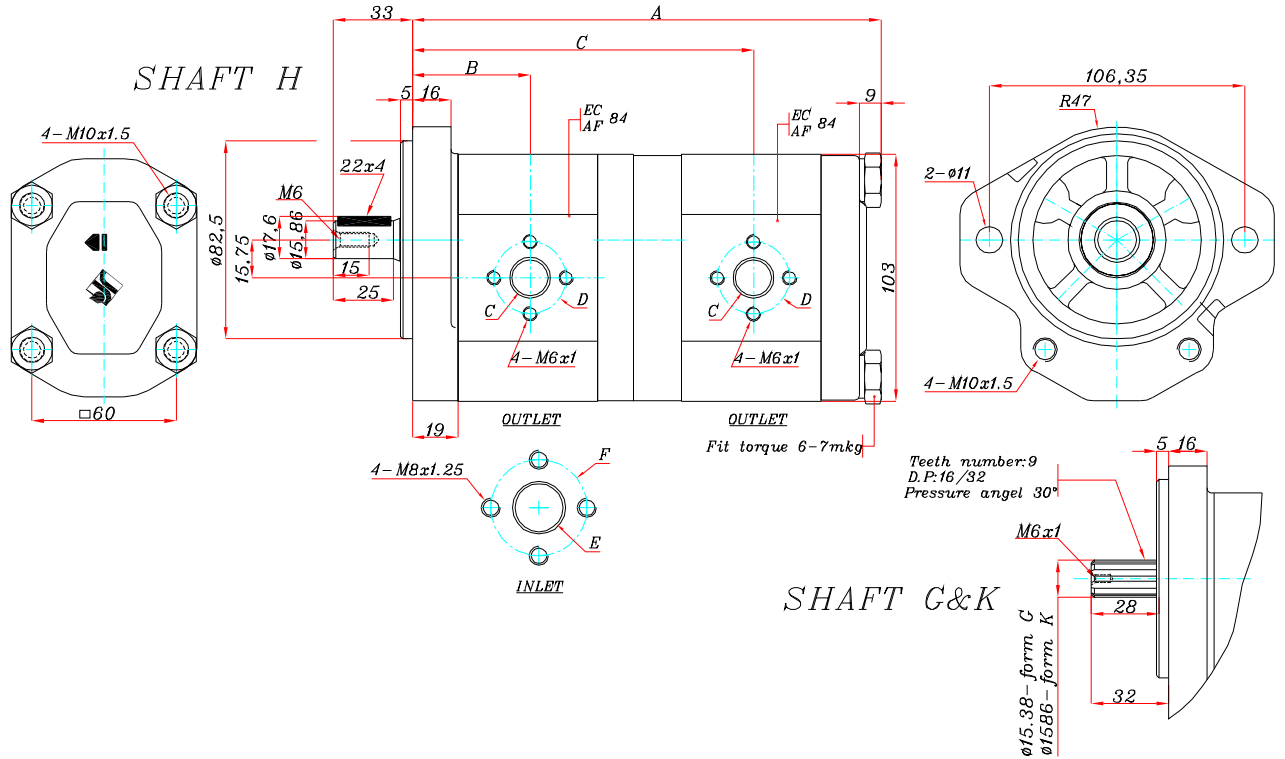
In the reversible pumps, threaded ports available R only, both ports same dimension that corresponds to the suction dimension. The drawing above shows a pump turning clockwise. For anti-clockwise rotation sense, replace C by CC in which case suction and pressure ports shall be inverted.



Double pump with flange type 09
Model LM

301-1LM....(C/CC)H09B

SHAFT H&G&K (01)
OUT & INLET B
FLANGE 09



Model	A	B	C	Model	A	B	C	Outlet		Inlet		Model	A	B	C	Model	A	B	C	Outlet		Inlet	
								C	D	E	F									C	D	E	F
301-1LM6-6CA09B	172.9	40	121.9	301-1LM22-9CA09B	194.2	49	142.3					301-1LM32-16CA09B	213.7	160.6	301-1LM40-40CA09B	250.5	59.3	180					
301-1LM7.5-6CA09B	174.6		123.6	301-1LM22-12CA09B	197.4		144.4	15	30	20	40	301-1LM32-18CA09B	215.9	218	301-1LM46-6CA09B	218	62	187					
301-1LM7.5-7.5CA09B	176.3			301-1LM22-14CA09B	199.6			*	*	*	*	301-1LM32-22CA09B	220.5		301-1LM46-7.5CA09B	219.7			15	30	20	40	
301-1LM9-6CA09B	176.3	42.5	125.3	301-1LM22-16CA09B	201.9		148.8					301-1LM32-25CA09B	223.9		301-1LM46-9CA09B	221.4		169.5	*	*	*	*	
301-1LM9-7.5CA09B	178			301-1LM22-18CA09B	204.1							301-LM32-27CA09B	226.2		301-1LM46-12CA09B	224.6		171.6					
301-1LM9-9CA09B	179.7		127.8	301-1LM22-22CA09B	208.7							301-1LM32-32CA09B	232.3	188.3	301-1LM46-14CA09B	226.8							
301-1LM12-6CA09B	179.5	44.6	128.5	301-1LM25-6CA09B	194.2		143.2					301-1LM35-6CA09B	205.5	56.5	301-1LM46-16CA09B	229.1		176					
301-1LM12-7.5CA09B	181.2			301-1LM25-7.5CA09B	195.9							301-1LM35-7.5CA09B	207.2		301-1LM46-18CA09B	231.3							
301-1LM12-9CA09B	182.9		131	301-1LM25-9CA09B	197.8		145.7					301-1LM35-9CA09B	208.9	157	301-1LM46-22CA09B	235.9							
301-1LM12-12CA09B	186.1		133.1	301-1LM25-12CA09B	200.8		147.8					301-1LM35-12CA09B	212.1	159.1	301-1LM46-25CA09B	239.3							
301-1LM14-6CA09B	181.7		130.7	301-1LM25-14CA09B	203							301-1LM35-14CA09B	214.3		301-1LM46-27CA09B	241.6							
301-1LM14-7.5CA09B	183.4			301-1LM25-16CA09B	205.3		152.2					301-1LM35-16CA09B	216.6	163.5	301-1LM46-32CA09B	247.7		181.7					
301-1LM14-9CA09B	185.1		133.2	301-1LM25-18CA09B	207.5							301-1LM35-18CA09B	218.8		301-1LM46-35CA09B	250.6		183.5					
301-1LM14-12CA09B	188.3		135.3	301-1LM25-22CA09B	212.1							301-1LM35-22CA09B	223.4		301-1LM46-40CA09B	256.8		186.3					
301-1LM14-14CA09B	190.5			301-1LM25-25CA09B	215.5							301-1LM35-25CA09B	226.8		301-1LM46-46CA09B	263.1		189					
301-1LM16-6CA09B	184	49	133	301-1LM27-6CA09B	196.5		145.5					301-1LM35-27CA09B	229.1		301-1LM52-6CA09B	224.9	66.2	173.9					
301-1LM16-7.5CA09B	185.7			301-1LM27-7.5CA09B	198.2							301-1LM35-32CA09B	235.2	169.2	301-1LM52-7.5CA09B	226.6							
301-1LM16-9CA09B	187.4		135.5	301-1LM27-9CA09B	199.9		148					301-1LM35-35CA09B	238.1	171	301-1LM52-9CA09B	228.3		176.4					
301-1LM16-12CA09B	190.6		137.6	301-1LM27-12CA09B	203.1		150.1					301-1LM40-6CA09B	211.7	59.3	301-1LM52-12CA09B	231.5		178.5					
301-1LM16-14CA09B	192.8			301-1LM27-14CA09B	205.3							301-1LM40-7.5CA09B	213.4		301-1LM52-14CA09B	233.7							
301-1LM16-16CA09B	195.1		142	301-1LM27-16CA09B	207.6		154.5					301-1LM40-9CA09B	215.1		301-1LM52-16CA09B	236		182.9					
301-1LM18-6CA09B	186.2		135.2	301-1LM27-18CA09B	209.8							301-1LM40-12CA09B	218.3	163.2	301-1LM52-18CA09B	238.2							
301-1LM18.7.5CA09B	187.9			301-1LM27-22CA09B	214.4							301-1LM40-14CA09B	220.5	165.3	301-1LM52-22CA09B	242.8							
301-1LM18-9CA09B	189.6		137.7	301-1LM27-25CA09B	217.8							301-1LM40-16CA09B	222.8	169.7	301-1LM52-25CA09B	246.2							
301-1LM18.12CA09B	192.8		139.8	301-1LM27-27CA09B	220.1							301-1LM40-18CA09B	225		301-1LM52-27CA09B	248.5							
301-1LM18-14CA09B	195			301-1LM32-6CA09B	202.6	54.7	151.6					301-1LM40-22CA09B	229.8		301-1LM52-32CA09B	254.6		188.6					
301-1LM18.16CA09B	197.3		144.2	301-1LM32-7.5CA09B	204.3							301-1LM40-25CA09B	233		301-1LM52-35CA09B	257.5		190.4					
301-1LM18.18CA09B	199.5			301-1LM32-9CA09B	206		154.1					301-1LM40-27CA09B	235.3		301-1LM52-40CA09B	263.7		193.2					
301-1LM22-6CA09B	190.8	49	139.8	301-1LM32-12CA09B	209.2		156.2					301-1LM40-32CA09B	241.4	175.4	301-1LM52-46CA09B	270		195.9					
301-1LM22-7.5CA09B	192.5			301-1LM32-14CA09B	211.4							301-1LM40-35CA09B	244.3	177.2	301-1LM52-52CA09B	276.9		200.1					

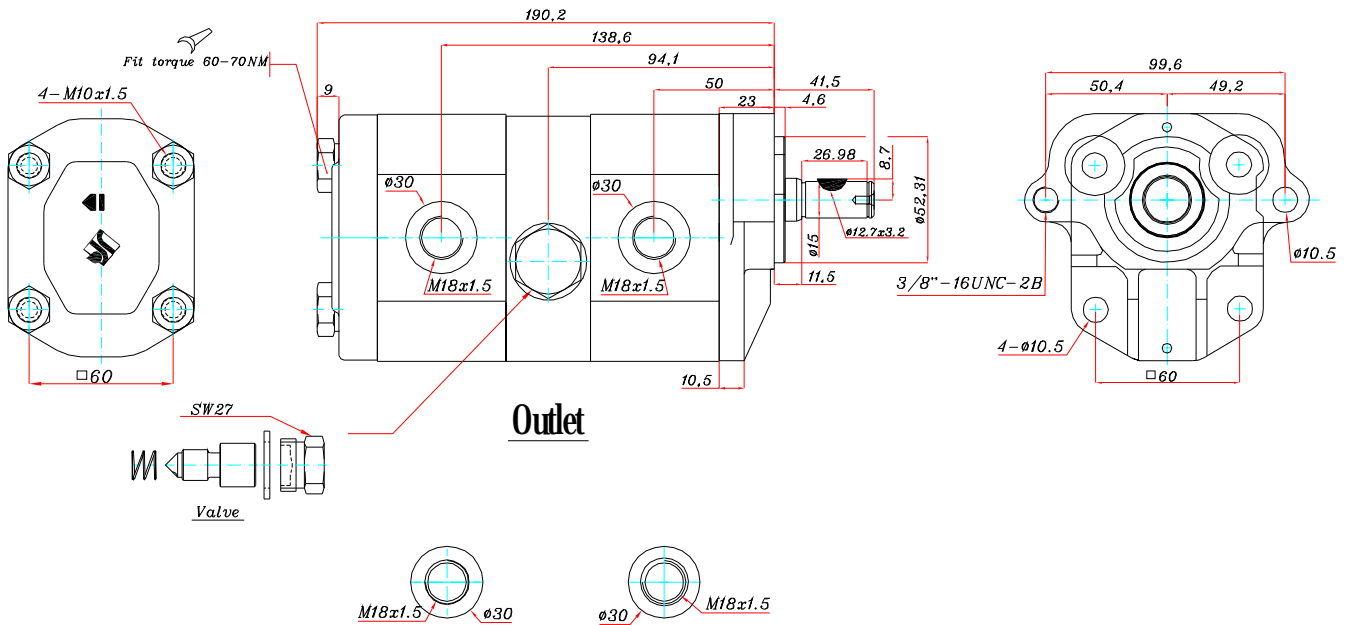
In the reversible pumps, threaded ports available R only both ports same dimension that corresponds to the suction dimension. The drawing above shows a pump turning clockwise. For anti-clockwise rotation sense; replace C by CC in which case suction and pressure ports shall be inverted.



Double pump with flange type 07
 Model LM

325-1LM12-12CCN07R/V

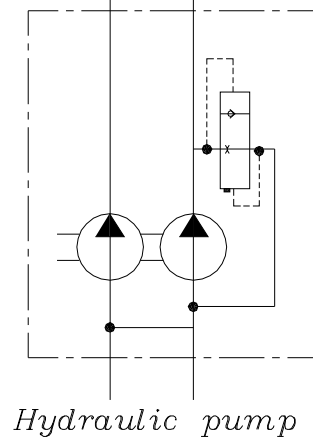
SHAFT N(N04)
 OUTLET & INLET R
 FLANGE 07



Outlet

Inlet

Front pump Rear pump

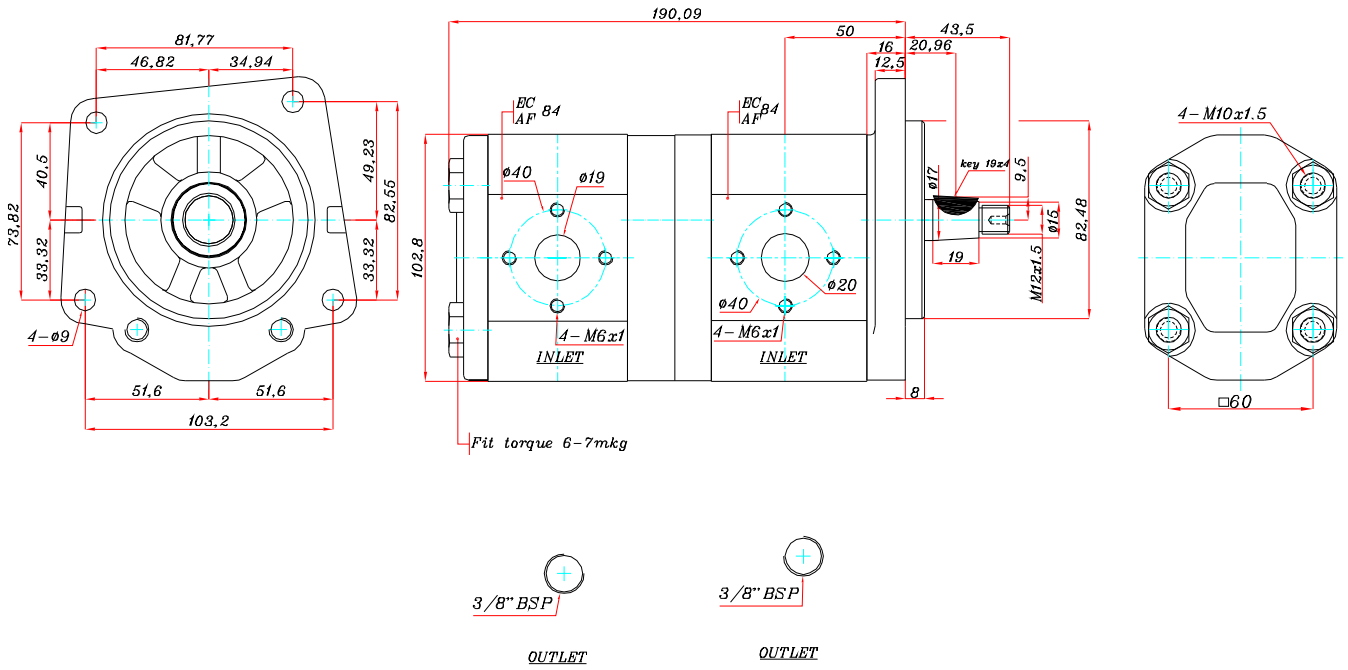




Double pump with flange type 04
 Model LM

306-1LM22-16CA04BR
 USING FOR EBRO Tractor

SHAFT A01
 OUTLET & INLET BR
 FLANGE 04



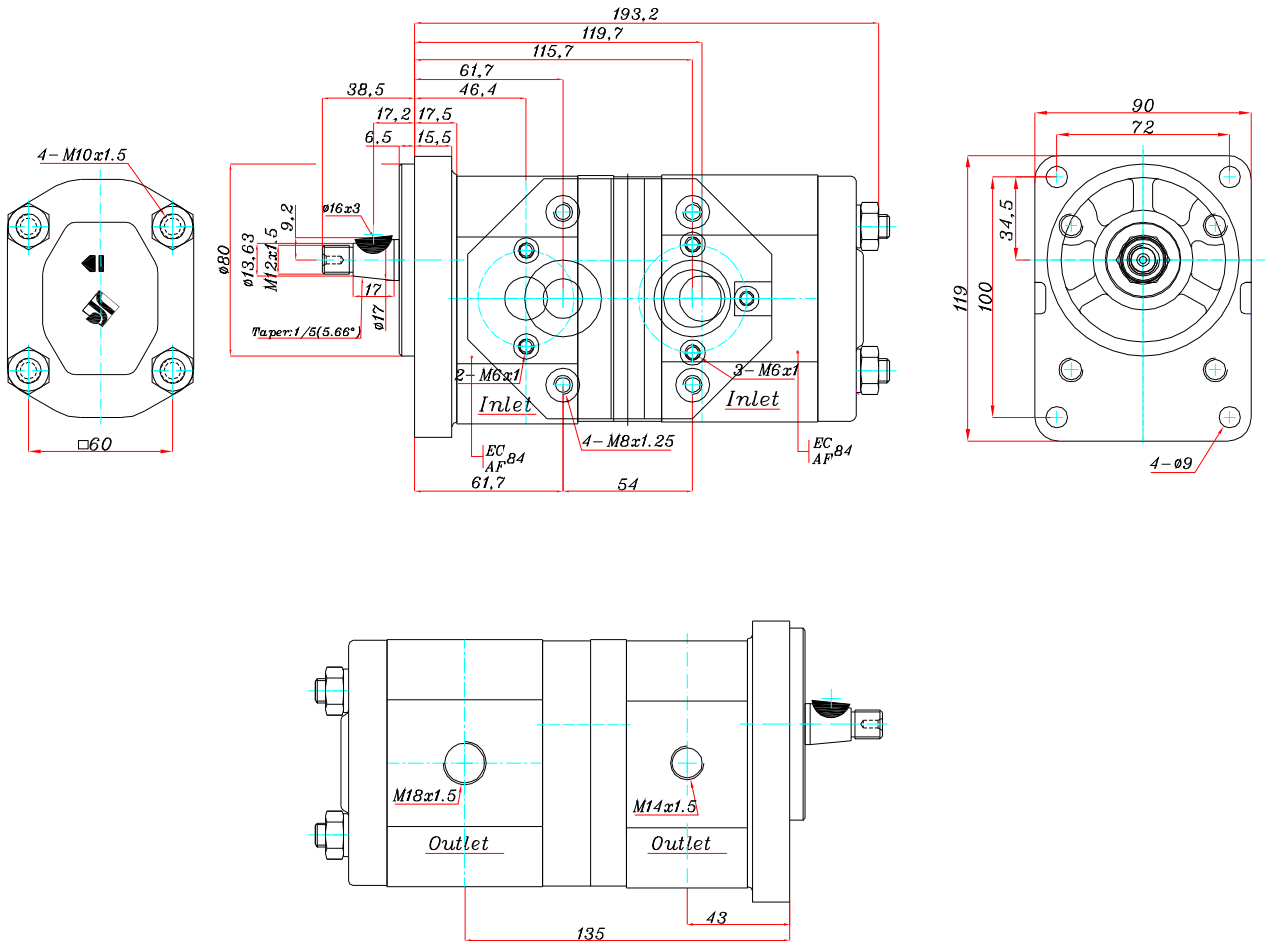


Double pump with flange type 45
Model LM

311-1LM9-22CCJ45R

SHAFT J(J01)
OUTLET & INLET R
FLANGE 45

USING FOR COMBINE CLASS145

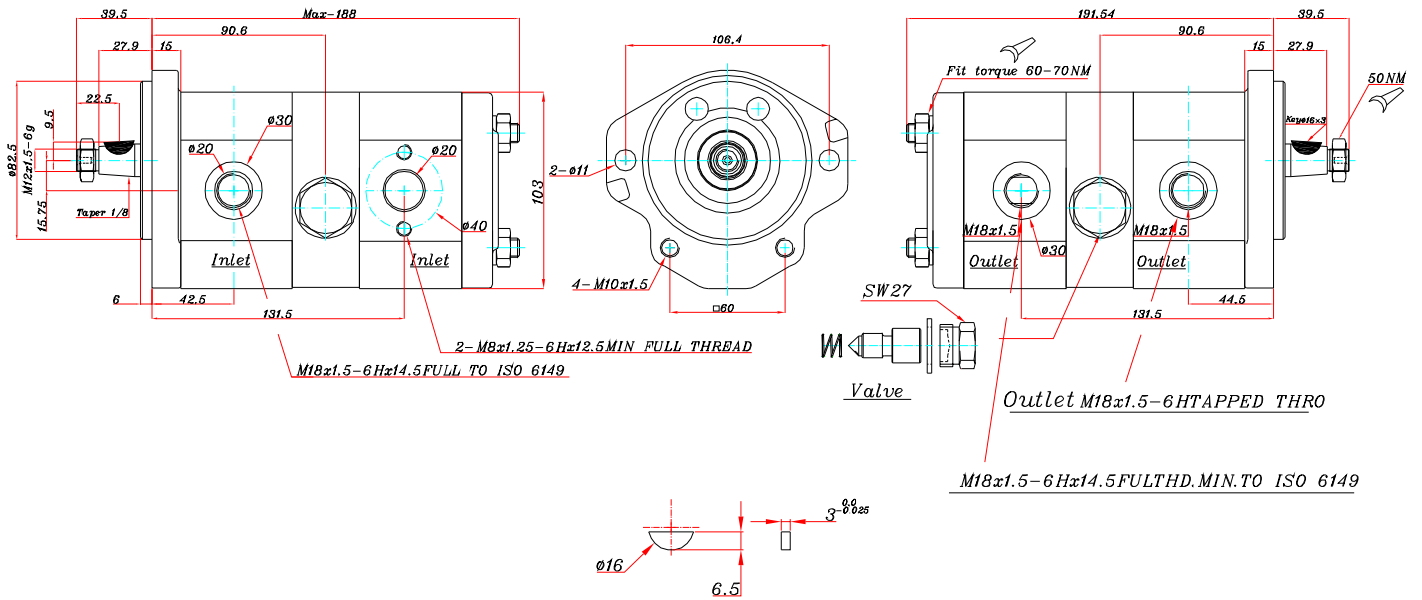




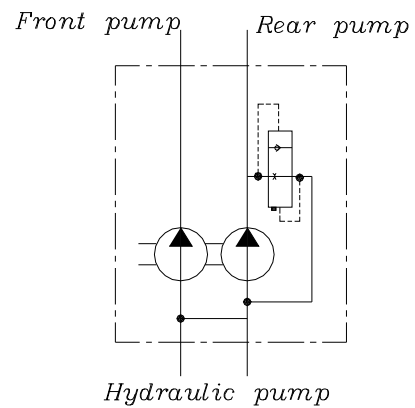
Double pump with flange type 36
Model LM

303-1LM16-12CCE36 BR/V
USING FOR MF 399 Tractor

SHAFT E(E07)
OUTLET & INLET BR
FLANGE 36



Model	CM ³ /rev(cm ³ /rev)		MAX. bar	
	1. PUMP	2. PUMP	1. PUMP	2. PUMP
303-1LM16-12CCE36 BR/V	10.6	8	275	275



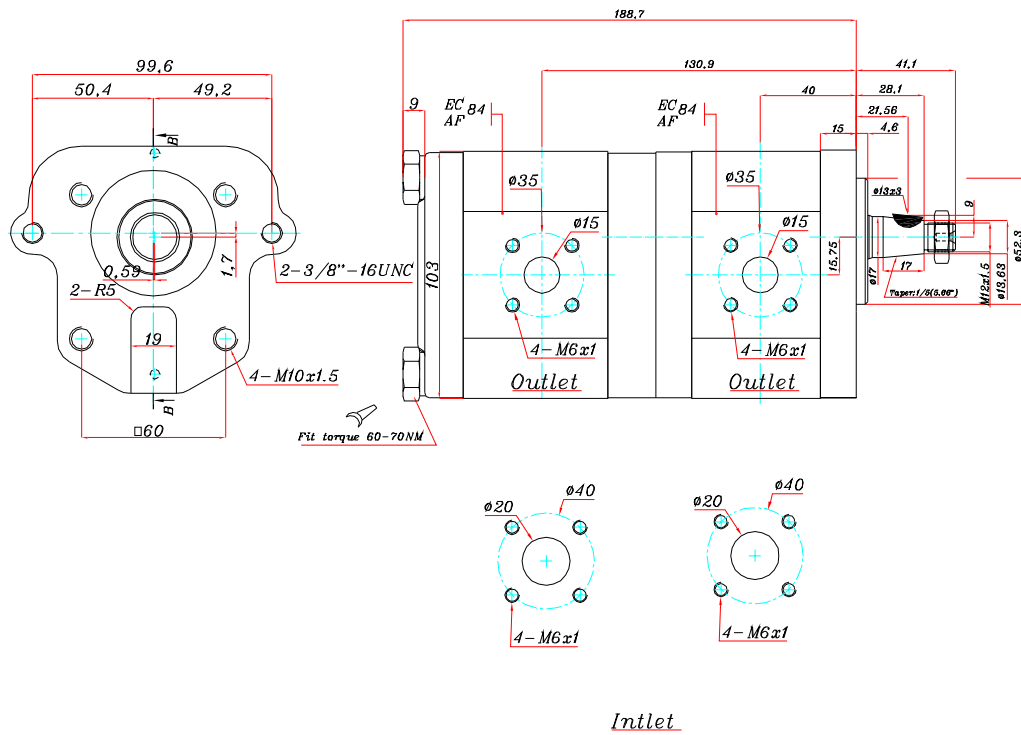


Double pump with flange type 14
 Model LM

312-1LM12-18CCJ14F

USING FOR MF 440 Tractor

SHAFT J(J07)
 OUTLET & INLET F
 FLANGE 14

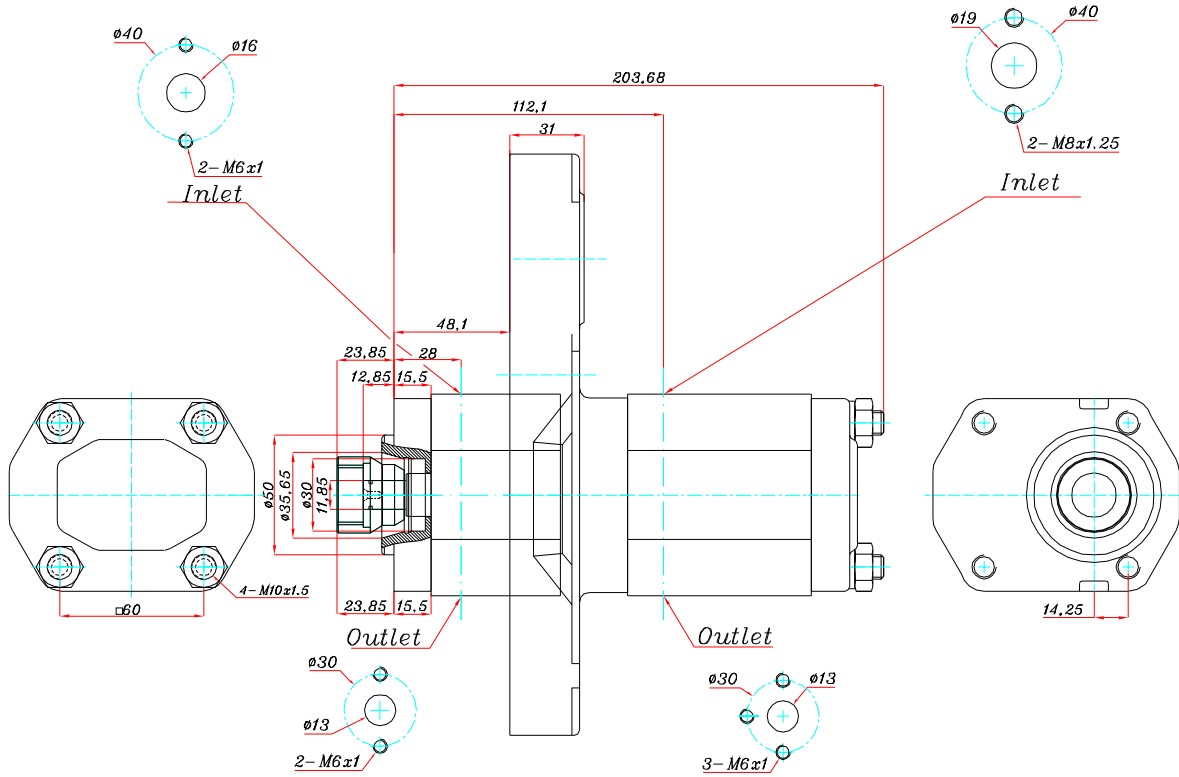




Double pump with flange type 15
 Model LM

331-1LM16-32CZ15B

SHAFT Z(Z02)
 OUTLET & INLET B
 FLANGE 15

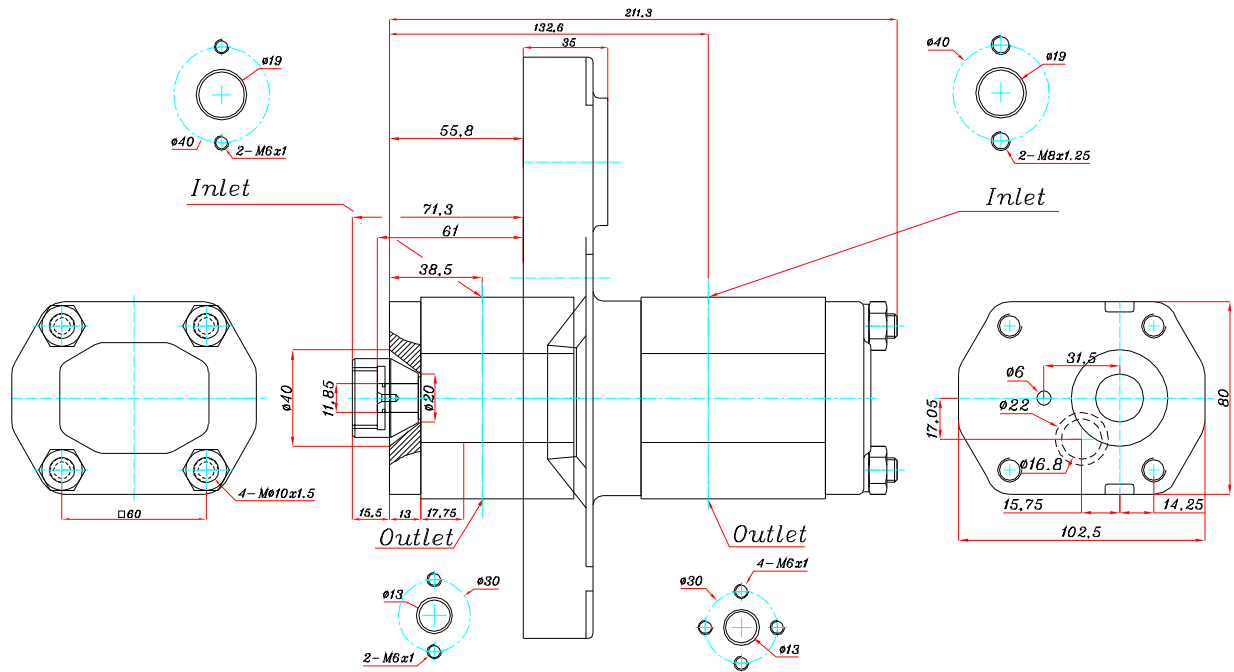




Double pump with flange type 17
 Model LM

332-1LM25-32CZ17B

SHAFT Z(Z03)
 OUTLET & INLET B
 FLANGE 17





Double pump with flange type 12
Model LM

329-1LM32-18CCG12B

VALMET 731320

327-1LM18-14CCG12B

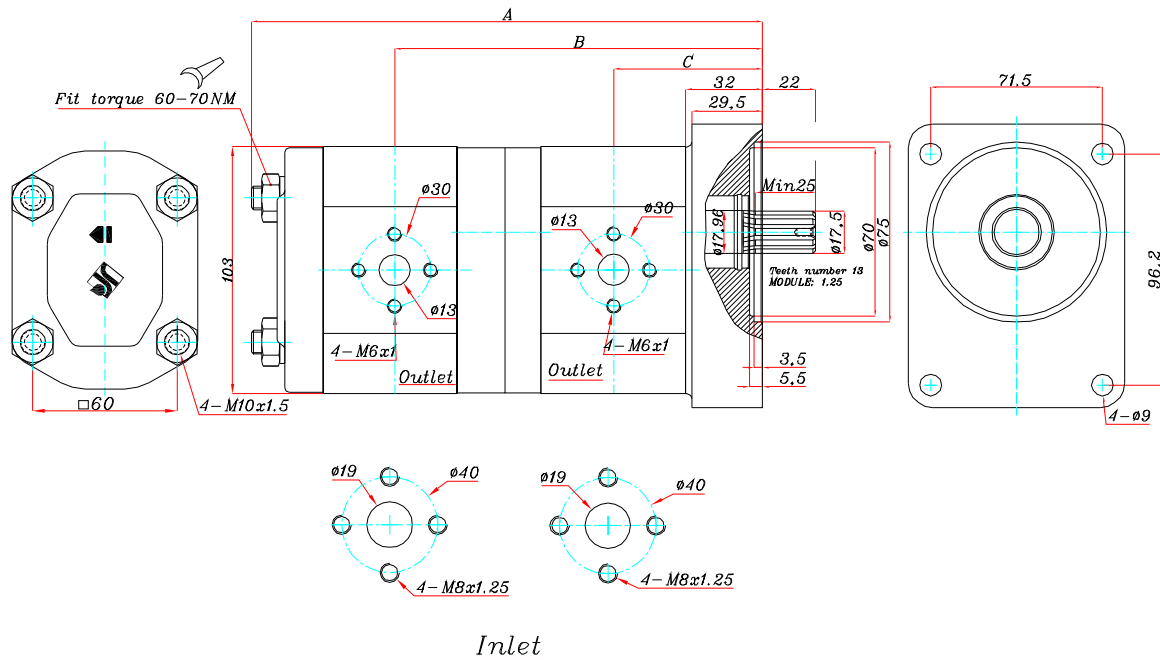
VALMET 305

328-1LM25-18CCG12B

VALMET 405

USING FOR VALMET Tractor

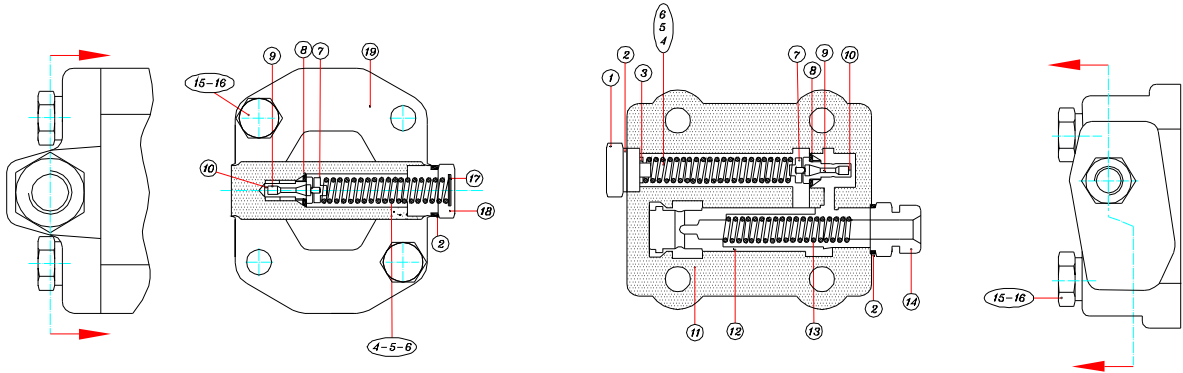
SHAFT G(C08)
OUTLET & INLET B
FLANGE 12



Name	Model	A	B	C
VALMET 305	327-1LM18-14CCG12B	212.9	153.2	62
VALMET 405	328-1LM25-18CCG12B	225.4	165.2	62
VALMET 731320	329-1LM32-18CCG12B	233.8	170.3	72.9



RELIEF VALVE



Pump with relief valve

No.	Description	Qty
1	Valve plug	1
2	Metal bonded gasket	2
3	Adjustment shim	-
4	Spring for 5-80bar	1
5	Spring for 80-175bar	1
6	Spring for 175-250bar	1
7	Valve head	1
8	Copper gasket	1
9	Relief valve	1
10	Valve seat assembly	1

Pump with flow control valve and relief valve

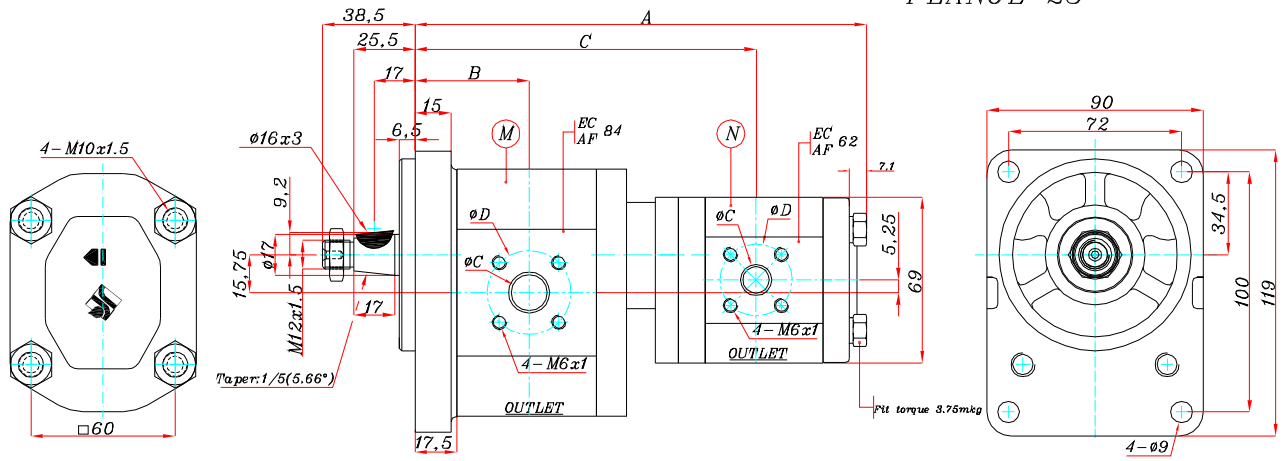
No.	Description	Qty
11	Valve housing	1
12	Flow control valve	1
13	Spring	1
14	Constant flow outlet fitting	1
15	Screws M10	4
16	Washer $\phi 10$ DIN-7980	4
17	Adjustment shim	-
18	Valve plug	1
19	Valve housing and back cover	1



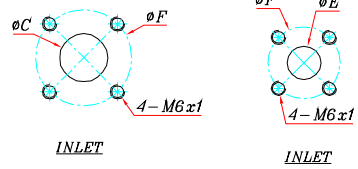
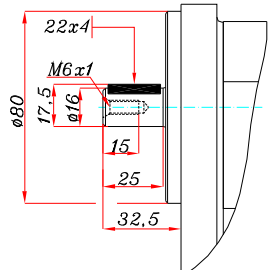
Double pump with flange type 23
Model LS

301-1LS.....(C/CC)J23F

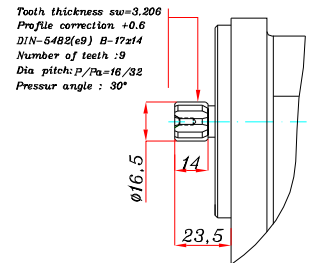
SHAFT J
OUTLET & INLET F
FLANGE 23



Shaft C



Shaft T



Model	A	B	C	Model	A	B	C	Model	A	B	C
301-1LS6-1.5CA23F	165.1	38.5	127.4	301-1LS18-1.5CA23F	178.4	47.5	140.7	301-1LS40-1.5CA23F	203.9	57.8	166.2
301-1LS6-3CA23F	170.2			301-1LS18-3CA23F	183.5			301-1LS40-3CA23F	209		
301-1LS6-5CA23F	176.9		130.9	301-1LS18-5CA23F	190.2		144.2	301-1LS40-5CA23F	215.7		169.7
301-1LS6-7.5CA23F	185.7		133.9	301-1LS18-7.5CA23F	199		147.2	301-1LS40-7.5CA23F	224.5		172.7
301-1LS6-10CA23F	193.9		139.2	301-1LS18-10CA23F	207.2		152.5	301-1LS40-10CA23F	232.7		178
301-1LS7.5-1.5CA23F	166.8		129.1	301-1LS22-1.5CA23F	183		145.3	301-1LS46-1.5CA23F	210.2	60.5	172.5
301-1LS7.5-3CA23F	171.9			301-1LS22-3CA23F	188.1			301-1LS46-3CA23F	215.3		
301-1LS7.5-5CA23F	178.6		132.6	301-1LS22-5CA23F	194.8		148.8	301-1LS46-5CA23F	222		176
301-1LS7.5-7.5CA23F	187.4		135.6	301-1LS22-7.5CA23F	203.6		151.8	301-1LS46-7.5CA23F	230.8		179
301-1LS7.5-10CA23F	195.6		140.9	301-1LS22-10CA23F	211.8		157.1	301-1LS46-10CA23F	239		184.3
301-1LS9-1.5CA23F	168.5	41	130.8	301-1LS25-1.5CA23F	186.4		148.7	301-1LS52-1.5CA23F	217.1	64.7	179.4
301-1LS9-3CA23F	173.6			301-1LS25-3CA23F	191.5			301-1LS52-3CA23F	222.2		
301-1LS9-5CA23F	180.3		134.3	301-1LS25-5CA23F	198.2		152.2	301-1LS52-5CA23F	228.9		182.9
301-1LS9-7.5CA23F	189.1		137.3	301-1LS25-7.5CA23F	207		155.2	301-1LS52-7.5CA23F	237.7		185.9
301-1LS9-10CA23F	197.3		142.6	301-1LS25-10CA23F	215.2		160.5	301-1LS52-10CA23F	245.9		191.2
301-1LS12-1.5CA23F	171.7	43.1	134	301-1LS27-1.5CA23F	188.7		151				
301-1LS12-3CA23F	176.8			301-1LS27-3CA23F	193.8						
301-1LS12-5CA23F	183.5		137.5	301-1LS27-5CA23F	200.5		154.5				
301-1LS12-7.5CA23F	192.3		140.5	301-1LS27-7.5CA23F	209.3		157.5				
301-1LS12-10CA23F	200.5		145.8	301-1LS27-10CA23F	217.5		162.8				
301-1LS14-1.5CA23F	173.9		136.2	301-1LS32-1.5CA23F	194.8	53.2	157.1				
301-1LS14-3CA23F	179			301-1LS32-3CA23F	199.9						
301-1LS14-5CA23F	185.7		139.7	301-1LS32-5CA23F	206.6		160.8				
301-1LS14-7.5CA23F	194.5		142.7	301-1LS32-7.5CA23F	215.4		163.6				
301-1LS14-10CA23F	202.7		148	301-1LS32-10CA23F	223.6		168.9				
301-1LS16-1.5CA23F	176.2	47.5	138.5	301-1LS35-1.5CA23F	197.7	55	160				
301-1LS16-3CA23F	181.3			301-1LS35-3CA23F	202.8						
301-1LS16-5CA23F	188		142	301-1LS35-5CA23F	209.5		163.5				
301-1LS16-7.5CA23F	196.8		145	301-1LS35-7.5CA23F	218.3		166.5				
301-1LS16-10CA23F	205		150.3	301-1LS35-10CA23F	226.5		171.8				

Pump	Outlet		Inlet	
	C	D	E	F
Pump.M	15	30	20 *	40
Pump.N	11	30	14	30

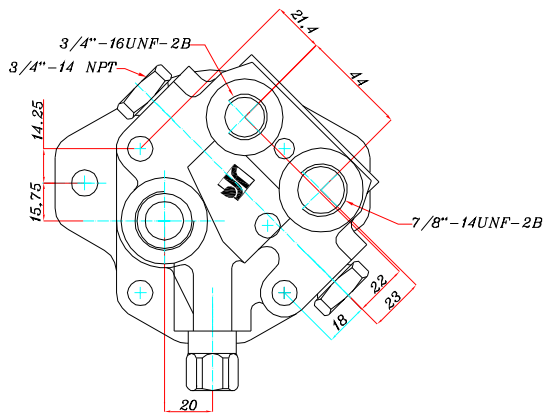
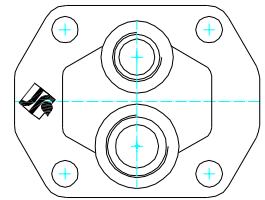
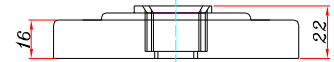
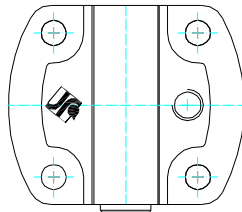
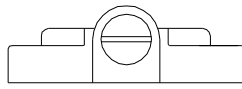
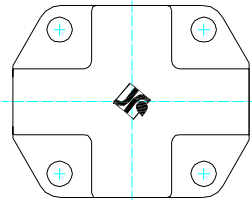
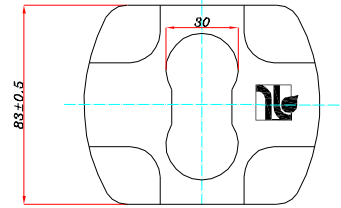
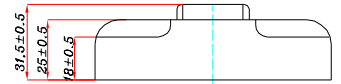
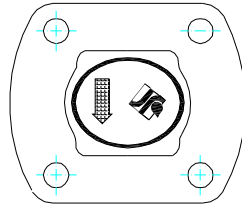
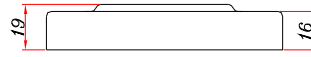
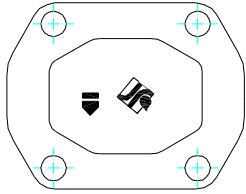
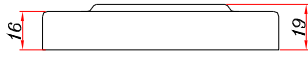
Pump.N	Outlet	Inlet
1.5-3-5	1/4"	3/8"
7.5-10	3/8"	1/2"

*. On the 6&7.5&9 lit pump " M " dimension " E " of suction side is 15 mm.

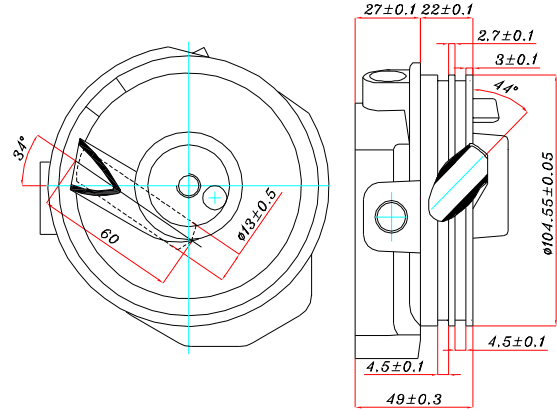
In the reversible pumps , threaded ports available R only ,both ports same dimension that corresponds to the suction dimension
The drawing above shows a pump turning clockwise .For anti -clockwise rotation sense ;replace C by CC in which case suction and pressure ports shall be inverted



BACK COVER MODEL L



JOHN-DEERE



MF 285

