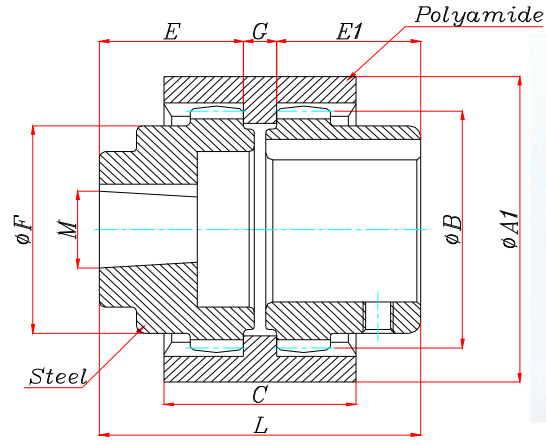
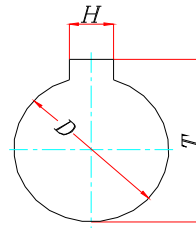
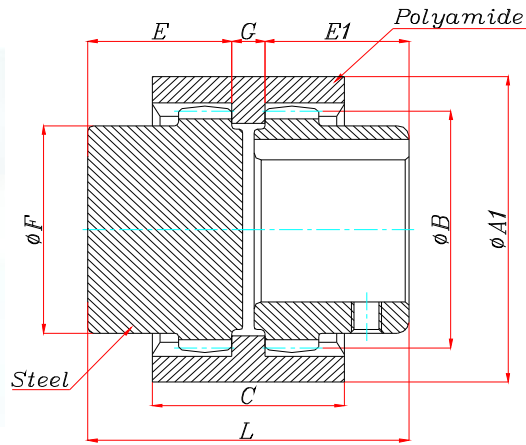
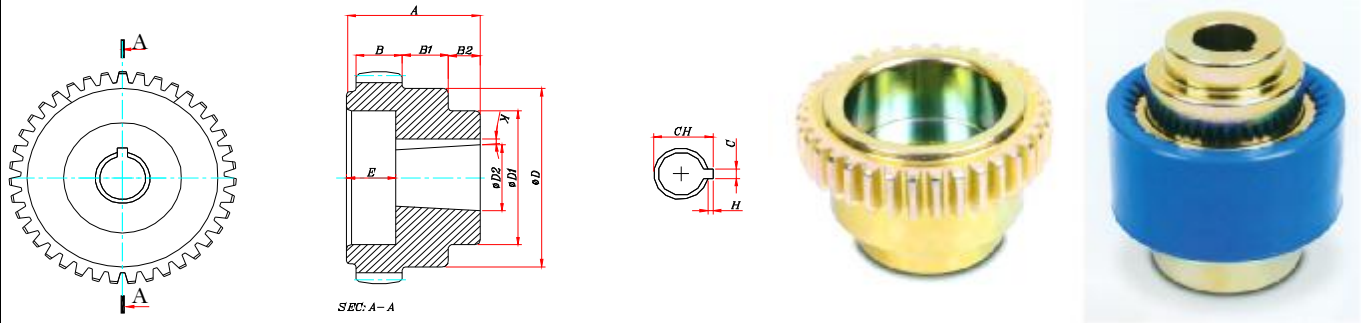


COUPLING



Code	Motor Power		Coupling Dimensions								Max . Operation Dia.	Treated Diameter							
												Engine			Pump				
TYPE	KW	HP	L	A1	B	F	E	E1	C	G	D	H	T	D			M		
DK 14	0.25-0.38	0.35-0.5	50	40	32	24	24	24	28	2	14	5	16.5	14	PLO
DK 24	1.1-1.5	1.5-2	58	53	44	36	28	28	37	2	24	6	27	14	19	24	PLO-PL
DK 28	2.2-4	3-5.5	82	67	57	44	40	40	40	2	28	8	32	19	24	28	PLO-PL	PLA
DK 32	2.2-4	3-5.5	82	76	59	50	40	40	43	2	32	8	36	19	24	28	PL	PLA
DK38	5.5-7.5	7.5-10	86	84	68	58	42	42	47	2	38	10	42	19	24	28	38	PL	PLA
DK42	11-15	15-20	86	88	72	60	42	42	47	2	42	12	47	24	28	38	42	PL	PLA
DK 48	18.5-22	25-30	96	99	78	68	47	47	47	2	48	14	53	28	38	42	48	PL	PLA
DK 55	30	40	112	121	99	85	55	55	58	2	55	16	62	38	42	48	55	PL	PLA
DK 60	37-45	50-60	138	138	112	91	68	68	68	2	60	18	67	42	48	55	60	PL	PLA



Pump Side Coupling Gear

CODE	A	B	B1	B2	C	CH	D	D1	D2	E	H	K	Z
DK 14LOE	24	8	-	-	2.5	11	24	-	9.5	12	1.5	1/8	20
DK 24LOE	28	9.6	11.5	5	2.5	11	36	23	9.5	15.5	1.5	1/8	27
DK 24LE	28	9.6	-	-	3.2	18.5	36	-	17.2	-	1.3	1/8	27
DK 28LOE	40	12.15	15	11	2.5	11	43.7	31	9.5	27.5	1.5	1/8	36
DK 28LE	40	12.15	-	-	3.2	18.5	43.7	-	17.2	-	1.3	1/8	36
DK 28LC	40	12.15	15	11	4	17.6	43.7	31	16	-	1.8	-	36
DK 32LE	40	13	-	-	4	18.5	50	-	17.2	-	1.3	1/8	38
DK 38 LE	42	15	-	-	3.2	18.5	58	-	17.2	-	1.3	1/8	37
DK 38 LC	42	15	-	-	4	17.6	58	-	16	-	1.8	-	37
DK 42 LE	42	14.3	14	10	3.2	18.5	60	35	17.2	20	1.3	1/8	39
DK 42 LC	42	14.3	14	10	4	17.6	60	35	16	15.5	1.8	-	39
DK 42 LAE	42	14.3	14	10	4	24.2	60	45	22.2	15.5	3.8	1/8	39
DK 42 LAC	42	14.3	14	10	6	26.7	60	45	24	-	3	0	39
DK 42 LAC 22.2	42	14.3	14	10	6	25	60	45	22.2	-	3.2	0	39