



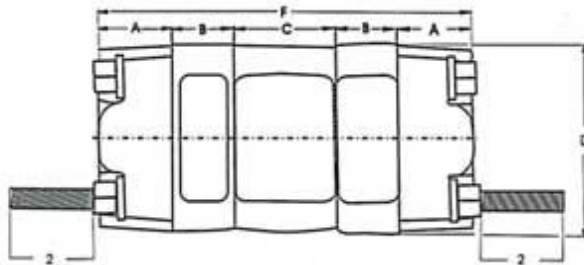
## **FD FLOW DIVIDERS/INTENSIFIERS**



### **FD FLOW DIVIDERS/INTENSIFIERS FEATURES**

- ❑ FD Flow dividers / intensifiers are applicable to different kind of machines and equipments
- ❑ Reliable cast iron and special roller bearings incorporate form the stackable construction
- ❑ Advanced thrust plate structure of special treatment surface extends pump life
- ❑ FD Flow dividers / intensifiers are of the same structure, only by their positions in the hydraulic system can classify whether the device is flow divider or intensifier
- ❑ Tandem, triple, or multiple flow dividers and intensifiers options available
- ❑ Three series available

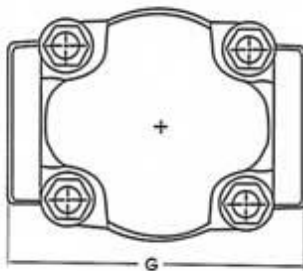
**DIMENSIONAL DATA**



A flow divider assembly code

FD	3100	B	AX	DC12	-1	E	DC12	AX
1	2	3	4	5	6	7	8	9
1	FLOW DIVIDER							FD
2	SERIES							3100
3	MULTIPLE							B
4	PORT END COVER							AX
5	GEAR HOUSING							DC12
6	CONNECTING SHAFT							-1
7	BEARING CARRIER							E
8	GEAR HOUSING							DC12
9	PORT END COVER							AX

SERIES	SIZE				TWO SECTION	THREE SECTION	FOUR SECTION	FIVE SECTION
	"A"	"B"	"C"	"D"	"F"	"F"	"F"	"F"
FD3100	1.75	.75+GW	2.5	5.50	7.50+TOTGW	10.75+TOTGW	14.00+TOTGW	17.25+TOTGW
	44.4	19.0+GW	63.5	139.7	190.5+TOTGW	273.0+TOTGW	355.6+TOTGW	438.3+TOTGW
FD5100	1.75	.75+GW	2.88	6.25	7.88+TOTGW	11.50+TOTGW	15.12+TOTGW	18.75+TOTGW
	44.4	19.0+GW	73.0	158.7	200.0+TOTGW	292.1+TOTGW	384.2+TOTGW	476.3+TOTGW
FD7600	2.00	1.00+GW	3.00	8.00	9.00+TOTGW	13.00+TOTGW	17.00+TOTGW	21.00+TOTGW
	50.8	25.4+GW	76.2	203.2	228.6+TOTGW	330.2+TOTGW	431.8+TOTGW	533.4+TOTGW



SERIES	SIZE					
	"G1"	"G2"	"G2"	"G3"	"G4"	"G5"
FD3100	5.18	5.75	5.75	5.75	5.75	5.62
	131.6	146.0	146.0	146.0	146.0	142.7
FD5100	5.18	5.75	5.75	5.75	5.75	5.82
	131.6	146.0	146.0	146.0	146.0	142.7
FD7600	7.37	7.37	7.37	7.37	7.37	7.25
	187.2	187.2	187.2	187.2	187.2	184.1

Dimensions are in inches  
mm

- G1=NARROW BEARING CARRIER WITH NO PORTS
- G2=WIDE BEARING CARRIER WITH NO PORTS
- G3=WIDE BEARING CARRIER WITH STAIGHT THREAD PORTS
- G4=WIDE BEARING CARRIER WITH IPT PORTS
- G5=WIDE BEARING CARRIER WITH SPLIT FLANGE PORTS