

**PERMCO**

**5100**

## **5100 SERIES HIGH PRESSURE GEAR PUMPS AND MOTORS**



**5100**  
**5100 SERIES MULTIPLE GEAR PUMPS**



**5100 SERIES GEAR MOTORS**

### **5100 SERIES FEATURES**

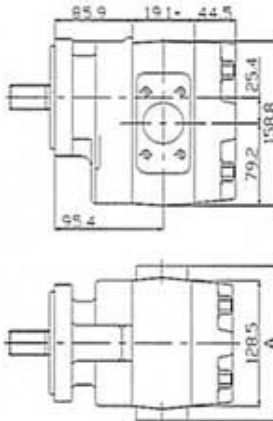
- P5100 is the high-pressure gear pump, Max. pressure up to 25 MPa
- U.S. patent stress controlled Roller Bearing extends pump life by 30%
- U.S. imported bearing, thrust plate and seal etc. improve pump's reliability
- Unique ring seal structure improves the pump performance efficiently, patent in U.S. & China
- Advanced thrust plate designs, special treatment surface improve pump's durability
- Pumps and motors are available in different mounting options that meet SAE standard
- Customized single unit and multiple units available

# 5100

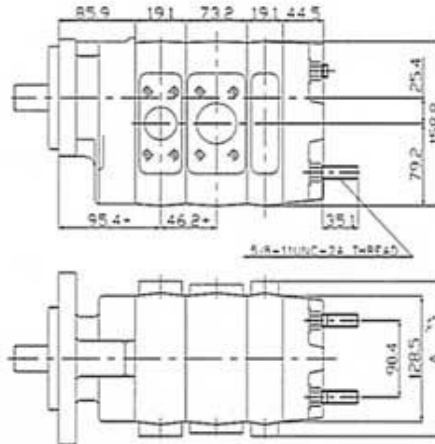
## DIMENSIONAL DATA



### SINGLE UNIT



### TANDEM UNITS



GEAR WIDTH  
FRONT GEAR WIDTH

## SPECIFICATIONS

### GEAR PUMPS

Model	(ml/rev) Displacement	(in) Gear width	(MPa) Pressure		(rpm) Speed	(KW) Input power	(Kg) Weight
			(Rated)	最高(Max.)			
P5100-F40	40	1	21	25	2400	39.5	17.6
P5100-F50	50	1-1/4				49.4	19.6
P5100-F63	63	1-1/2				62.3	20.2
P5100-F80	80	2				79.1	21.6
P5100-F90	90	2-1/4	18	21		76.2	22.4
P5100-F100	100	2-1/2				84.7	23.3

### GEAR MOTORS

Model	L/min Flow (2000rpm)	(in) Gear width	(MPa) Pressure		(rpm) Speed	(KW) (2000rpm) Output power	Output torque N · M
			(Rated)	(Max.)			
M5100-F40	88.9	1	21	25	600-2200	25.2	120.4
M5100-F50	111.1	1-1/4				31.5	150.5
M5100-F63	140	1-1/2				39.7	189.6
M5100-F80	177.8	2				50.4	240.8
M5100-F90	200	2-1/4	18	21		48.6	232.2
M5100-F100	222.2	2-1/2				54	258.0