

# **PERMCO** **DUMP PUMPS**

## **PUMP/VALVE ASSEMBLY FOR HEAVY AND MEDIUM DUTY DUMP TRUCKS AND TRAILERS**



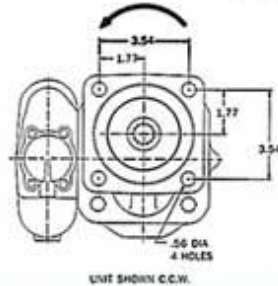
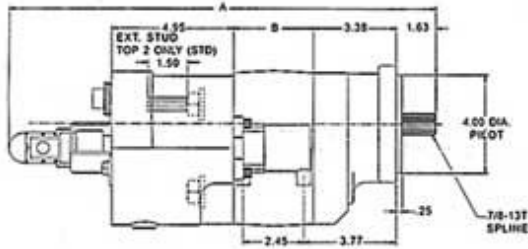
### **DUMP PUMP FEATURES**

- Pump and cylinder protected in the "Raise" and "Neutral" position of the spool
- Manual shift, factory installed "OE" air, or "Add-on" air shifts each with full metering capabilities
- Built-in load check maintains dump body angle and is installed in the cylinder port for superior self-cleaning
- Direct mount SAE "B" 4 bolt or twin shafted remote mount with bracket
- Heavy duty "controlled stress" roller bearings
- Built-in direct acting relief valve set at factory
- 100% factory tested
- Flows of 37 and 46 GPM at 1800 RPM
- Pressures to 2500 PSI
- Speeds to 2400 RPM
- High strength alloy steel gear and shaft set
- Neutral lock-out safety cap for use with pull-out cable
- 2 line for intermittent duty or 3 line for continuous duty systems
- 2 extra long studs for easy installation of pump support bracket on direct mount
- Pressure balanced wear plates maintain high pump efficiency throughout all operating ranges

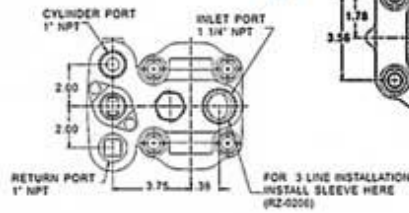




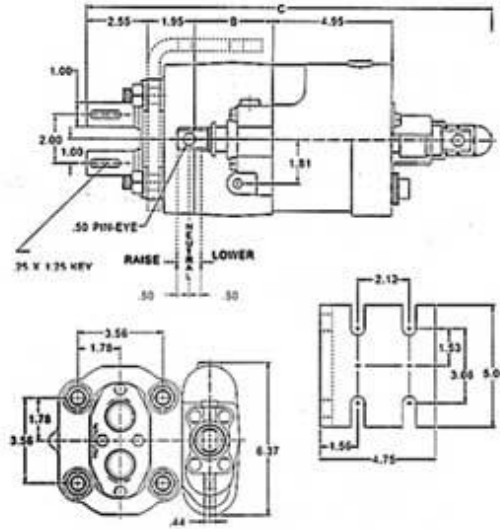
### Dimensional Data (inches)



	A	B
DMD-20	16.85"	2.75"
DMD-25	17.35"	3.25"



PORT VIEW SHOWN FOR BOTH DIRECT AND REMOTE MOUNT



	C	B
DM-512-20	16.35"	2.75"
DM-640-25	16.85"	3.25"

Dump Pumps are not recommended for ejector, conveyor, or moving floor type applications.

### Pump Code

Direct Mount, SAE 4 Bolt "B"

20 2.0" Gear / 37 GPM at 1800 RPM  
 25 2.5" Gear / 46 GPM at 1800 RPM

X 2 Line (Without 3 Line Sleeve)  
 Z 3 Line (With 3 Line Sleeve)

L Left Hand Rotation  
 R Right Hand Rotation

DMD - 25 - Z - L - AS - 20 - EB

Extended Stud Orientation

Delete Top Two (Std.)  
 EB Bottom Two  
 EL Left Side  
 ER Right Side  
 E4 All four

Relief Valve Setting

20 2000 PSI  
 25 2500 PSI

AS Air Shift  
 MS Manual Shift

Remote Mount

512-20 In.<sup>3</sup> x 100 / 2.0" Gear / 37 GPM at 1800 RPM  
 640-25 In.<sup>3</sup> x 100 / 2.5" Gear / 46 GPM at 1800 RPM

X 2 Line (Without 3 Line Sleeve)  
 Z 3 Line (With 3 Line Sleeve)

Valve Orientation  
 L Left Side  
 R Right Side (Std.)

DM - 640 - 25 - ZR - M - I - 200

Relief Valve Setting

200 2000 PSI  
 250 2500 PSI

T Manual Shift  
 AS "OE" Air Shift

M With Mounting Bracket (Std.)  
 O Without Mounting Bracket