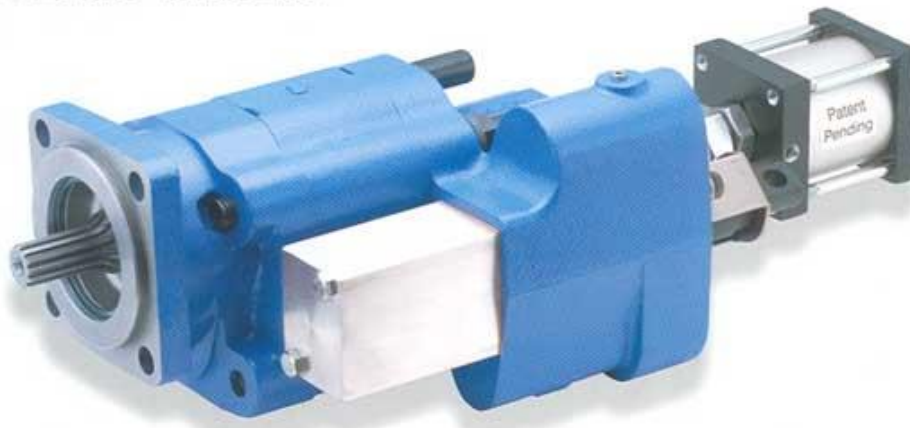


PERMCO

GEMINI

**HEAVY DUTY PUMP FOR LIVE FLOORS, MOVING FLOORS,
AND DUMP TRAILERS**



GEMINI FEATURES

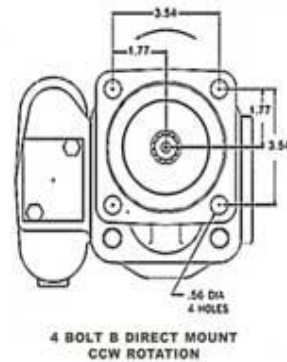
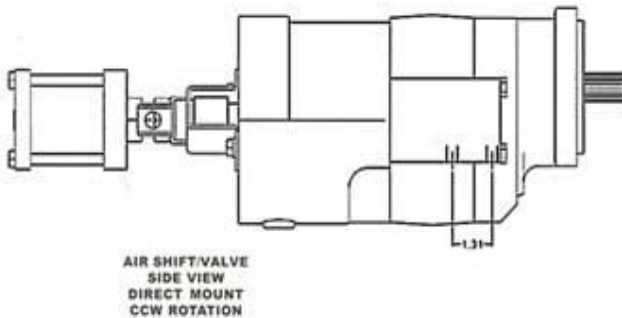
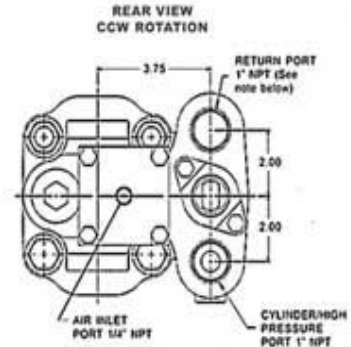
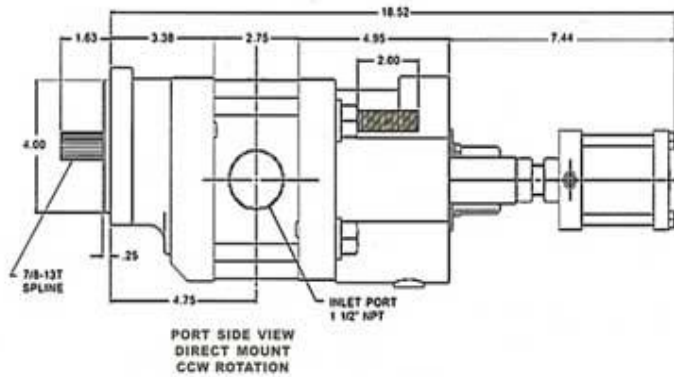
- Dual Pressure Relief: low for dump bodies, high for live floors
- Easy to switch from low to high pressure using truck air
- Large 1 1/2" NPT suction port in the gear housing
- Three line system for continuous duty
- Field adjustable relief settings
- Dowelled construction
- 37 GPM @ 1800 RPM
- 100% factory tested
- Heavy-duty "controlled stress" roller bearings
- Factory installed "OEM" air shift with full metering capabilities
- Direct mount SAE "B" 4 bolt or twin shafted remote mount with bracket
- Relief valve protects the high pressure portion of the system as well as the pump



997-01226-8
Air Shift Tower

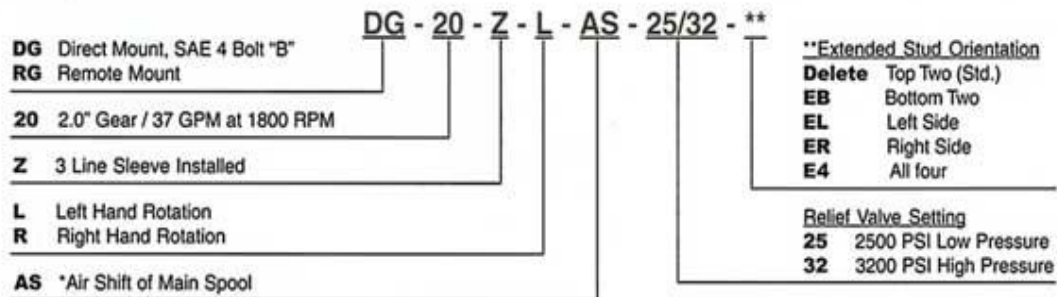


Dimensional Data (inches)



The third line sleeve is installed in the pump, therefore, the return port must be plumbed back to tank, below the oil line at all times.

Pump Code



*Because of potential interference with aftermarket air shift cylinders, we recommend the Permco "OEM" version.