

Sizes 6 to 30

up to 31.5MPa

up to 400 L/min

Replaces:
RE27219/5.2001

Features:

- Suitable for direct in-line mounting
- Pressure and viscosity dependent



www.khadamathydraulic.com
 Tell: 021-55882749
 Tell: 021-33488178
 Fax: 021-33488105

Functional description

Functional description

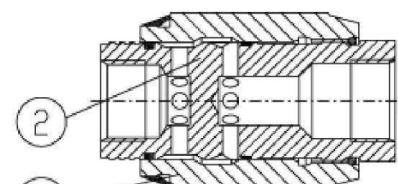
Valve types MG and Mk are pressure and viscosity dependent throttle and throttle check valves.

Type MG (throttle valve)

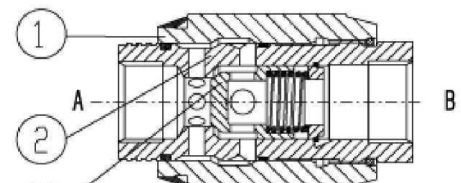
This valve throttles in both flow directions. Fluid flows through side drillings to the throttling point. This is formed between the housing (2) and the adjustable sleeve (1). The throttle cross-section may be steplessly varied by rotating the adjustable sleeve (1).

Type MK (throttle check valve)

With flow passing through the valve in throttling direction, the spring and the fluid presses the poppet onto its seat, thus blocking the flow. Fluid flows via the side drillings to the throttling point, which is formed between the housing (2) and the adjustable sleeve (1). In the opposite direction, fluid pressure acts on the face of the poppet, thus lifting it from its seat and allowing fluid to flow freely, unthrottled, through the valve. At the same time, part of the fluid flowing through the annular clearance produces the desired self-cleaning effect.



Type MK

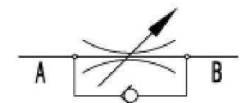


Type MK

Symbols



Type MG



Type Mk

Ordering details

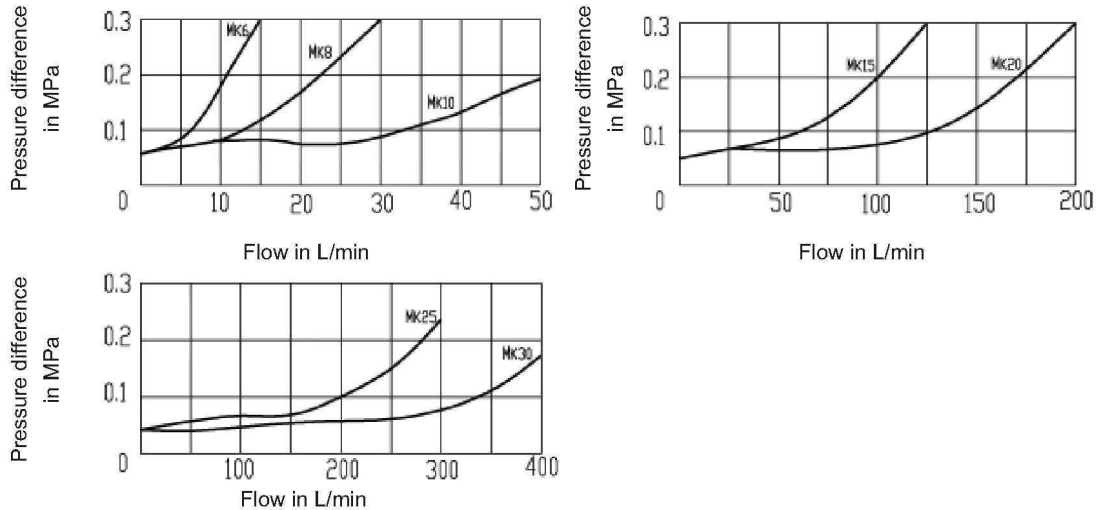
		G	1.2			*
Throttle valve = MG Throttle check valve = MK		Further details in clear text				
Size		No code= Mineral oil V= Phosphate ester				
Nominal size 6	= 6	No code= British				
Nominal size 8	= 8	2 = Metric				
Nominal size 10	= 10					
Nominal size 15	= 15					
Nominal size 20	= 20	1.2= Series 1.2				
Nominal size 25	= 25	(1.0 to 1.9: unchanged installation and connection dimensions)				
Nominal size 30	= 30	G = For threaded connections				

Technical data (for applications outside these parameters, please consult us!)

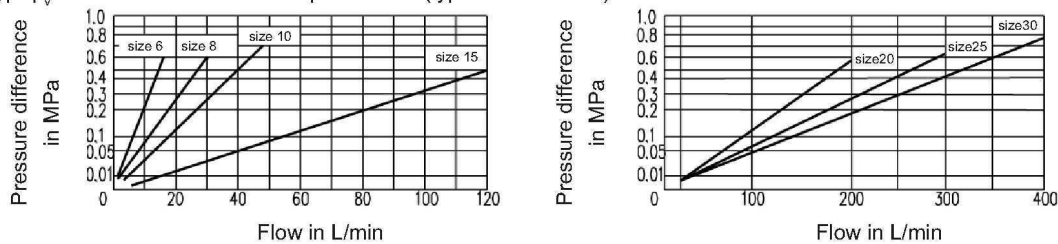
Size		6	8	10	15	20	25	30
Maximum flow (L/min)		15	30	50	140	200	300	400
Pressure (MPa)		up to 31.5						
Cracking pressure (MPa)		0.05 (Type MK)						
Pressure fluid		Mineral oil or Phosphate ester						
Viscosity range (mm ² /s)		10 to 800						
Pressure fluid temperature range (°C)		-30 to +80						

Characteristic curves (measured at $\nu = 41 \text{ mm}^2/\text{s}$ and $t = 50 \text{ }^\circ\text{C}$)

$\Delta p - q_v$ Characteristic curves via open check valve with closed throttle (type MK)

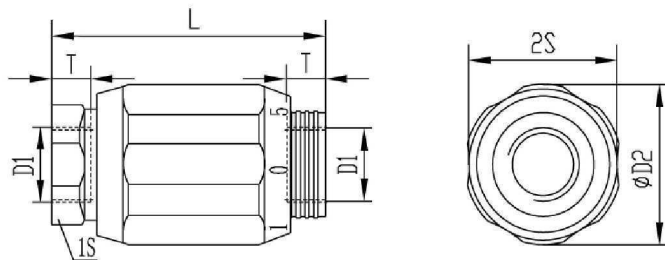


$\Delta p - q_v$ Characteristic curves via open throttle (types MG and MK)



Unit dimensions

(Dimensions in mm)



Size	D1		Φ D2	L	1S	2S	T	Weight (kg)
6	M14x1.5	G1/4"	34	65	22	32	12	0.3
8	M18x1.5	G3/8"	38	65	24	36	12	0.4
10	M22x1.5	G1/2"	48	80	30	46	14	0.7
15	M27x2	G3/4"	58	100	41	55	16	1.1
20	M33x2	G1"	72	110	46	70	18	1.9
25	M42x2	G1 1/4"	87	130	55	85	20	3.2
30	M48x2	G1 1/2"	93	150	60	90	22	4.1

Notice

1. The fluid must be filtered. Minimum filter fineness is 20 μm .
2. The tank must be sealing up and an air filter must be installed on air entrance.
3. Products without subplate when leaving factory, if need them, please ordering specially.
4. Valve fixing screws must be high intensity level (class 10.9). Please select and use them according to the parameter listed in the sample book.
5. Roughness of surface linked with the valve is required to $\frac{0.8}{\sqrt{\text{ }}$.
6. Surface finish of mating piece is required to 0.01/100mm.