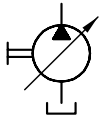


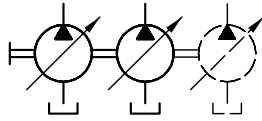


## Function

Single pump



Multiple pump



## Controller

### Pressure controller:

- Pressure controller (N)
- Pressure controller with remote-control port (P, Pb)

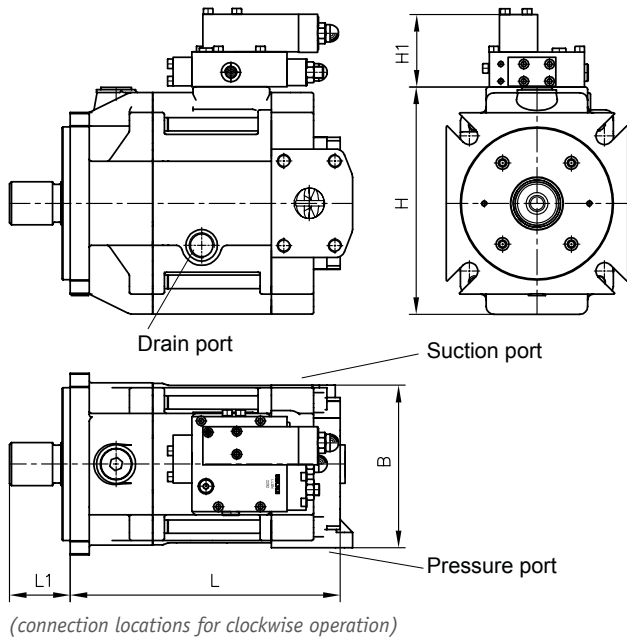
### flow controller

- Load-sensing controller (LS)
- Load-sensing controller with integrated pressure limitation (LSN)
- Flow controller for setting a constant, speed-independent volumetric flow (Q, Qb)
- Electro-proportional flow controller with rising characteristic (V)
- Hydraulic-proportional flow controller with rising characteristic (VH)

### Power controller:

- Power controller (L)
- Power controller, hydraulically adjustable (Lf1)

## General parameters and dimensions



- 1 Drain port
- 2 Suction port
- 3 Pressure connection

## Parameters

	Geom. delivery volume $V_g$ [cm <sup>3</sup> /rev]	Nominal pressure $P_{nom}$ ( $P_{max}$ ) [bar]	Max rotation speed $n$ [rpm]	Dimensions [mm]					m [kg]  (with controller)
				L	L1	H	H1	B	
V30D - 045	45	350 (420)	2600	268	68	150	82	160	40 (46)
V30D - 075	75		2400	310	80	170	86	178	60 (66)
V30D - 095	95		2200	341	93	196	87	196	70 (76)
V30D - 115	115	250 (300) <sup>1)</sup>	2000	341	93	196	87	196	70 (76)
V30D - 140	140	350 (420)	2200	363	90	212	85	212	85 (91)
V30D - 160	160	250 (300) <sup>1)</sup>	1900	363	90	212	85	212	85 (91)
V30D - 250	265	350 (420)	1800	432	115	224	97	272	130 (136)

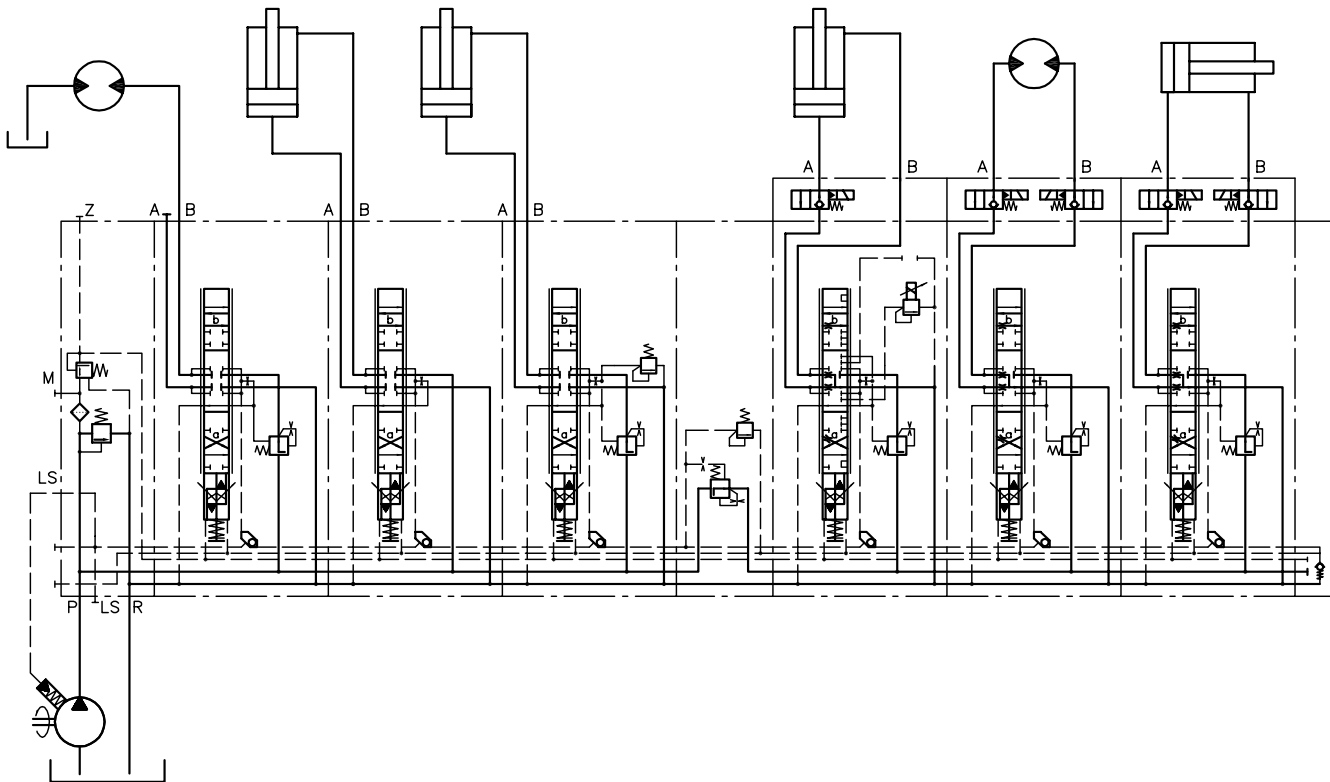
1) Higher pressures are possible with reduced delivery flow

## Ports

	Pressure connection	Suction port	Drain port
V30D - 045	3/4" SAE J518	1 1/2" SAE J518	G 1/2
V30D - 075	1" SAE J518	2" SAE J518	G 3/4
V30D - 095	1 1/4" SAE J518	2" SAE J518	G 3/4
V30D - 115	1 1/4" SAE J518	2" SAE J518	G 3/4
V30D - 140	1 1/4" SAE J518	2 1/2" SAE J518	G 3/4
V30D - 160	1 1/4" SAE J518	2 1/2" SAE J518	G 3/4
V30D - 250	1 1/2" SAE J518	3" SAE J518	M 33x 2

**Circuit example:**

V30D-250-LSN-2-1/05-LSN-320


**Associated technical data sheets:**

- Variable displacement axial piston pump type V30D: [D 7960](#),

**Similar products:**

- Variable displacement axial piston pump type V30E: [Page 16](#)
- Variable displacement axial piston pump type V60N: [Page 26](#)
- Fixed displacement axial piston pump type K60N: [Page 30](#)
- Variable displacement axial piston pump type V80M: [Page 24](#)

**Suitable proportional directional spool valve:**

- Type EDL: [Page 82](#)
- Type PSL/PSV 2, 3 and 5: [Page 90](#)
- Type PSLF/PSVF 3, 5 and 7: [Page 96](#)

**Suitable accessories:**

- Proportional amplifier type EV1M3: [Page 272](#)
- Proportional amplifier type EV2S: [Page 274](#)
- Proportional amplifier type EV1D: [Page 272](#)