

Size 6 to 10

up to 31.5 MPa

up to 100L/min

Replaces:
RE 21533/05.2001

Features:

- Sandwich plate valve
for use in vertical stacking assemblies
- 8 different isolating functions

www.khadamathydraulic.com
 Tell: 021-55882749
 Tell: 021-33488178
 Fax: 021-33488105

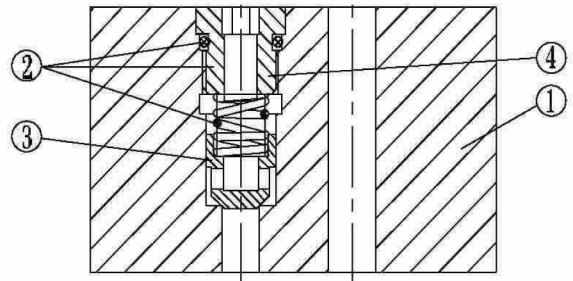
The Z1S 6 valve is a direct operated check valve in sandwich plate design.

It is used for the leak-free closure in one direction and allows free-flow in the counter direction.

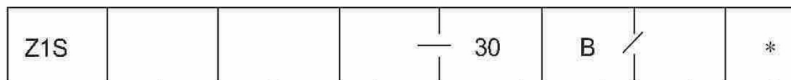
This valve type has a metallic seal between poppet (3) and housing (1). Valves of this type are especially suitable for applications with operating pressures above 10.0 MPa and flow velocities over 4 m/s.



- Porting pattern to Din 24 340 form A, ISO 4401 and CETOP-RP 121H



Ordering details



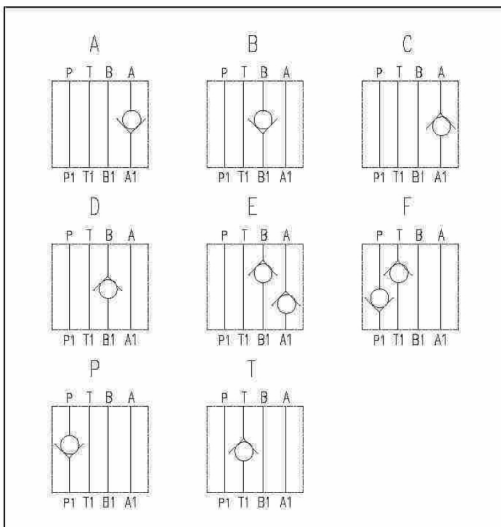
Size 6 = 6
 Size 10 = 10

Further details in clear text

No code = Mineral oils

V = Phosphate ester

30 = Series 30 to 39
 (30 to 39: unchanged installation and connection dimensions)



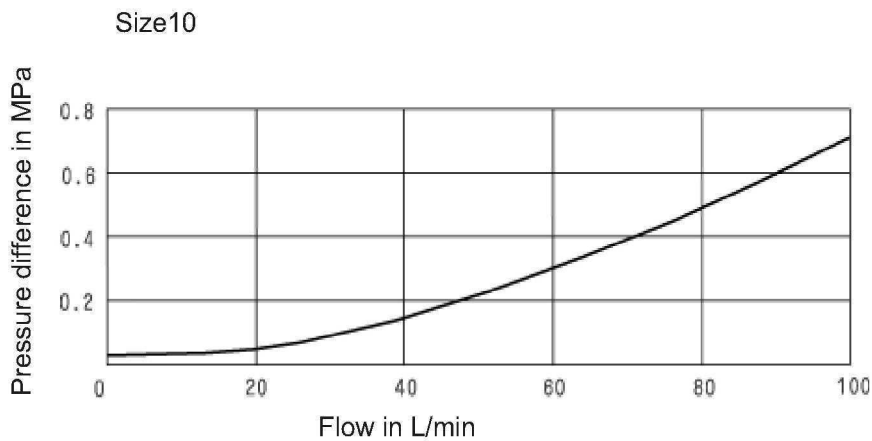
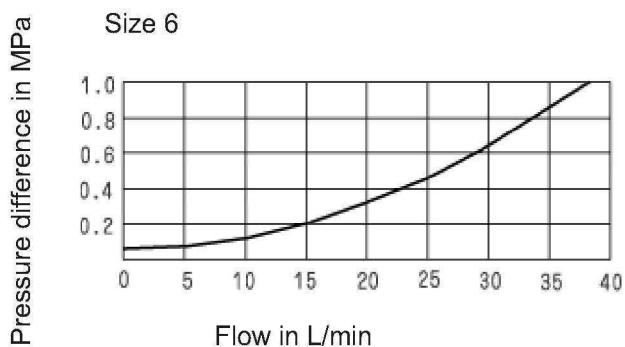
1= Cracking pressure 0.05 MPa
 2= Cracking pressure 0.3 MPa
 3= Cracking pressure 0.5 MPa

Technical data

Size		6	10
Max. flow (L/min)		40	100
Max. operating pressure (MPa)		31.5	
Cracking pressure		See the ordering details	
Pressure fluid		Mineral oils(for NBR seal) or phosphate ester(for FPM seal)	
Pressure fluid temperature range (°C)		- 20 to + 80	
Viscosity range (mm ² /s)		2.8 to 500	
Weight (kg)		0.8	2.3

* For application outside these parameter, please consult us!

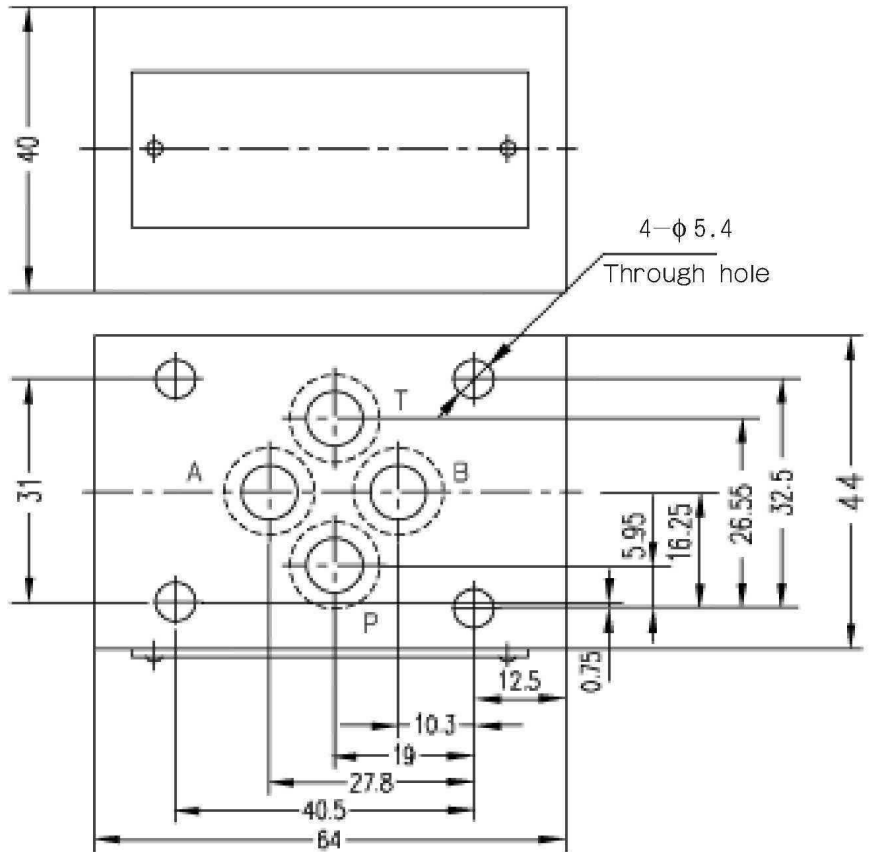
Characteristic curves (measured at $v = 41 \text{ mm}^2 / \text{s}$ and $t = 50 \text{ }^\circ\text{C}$)



Unit dimensions

(Dimensions in mm)

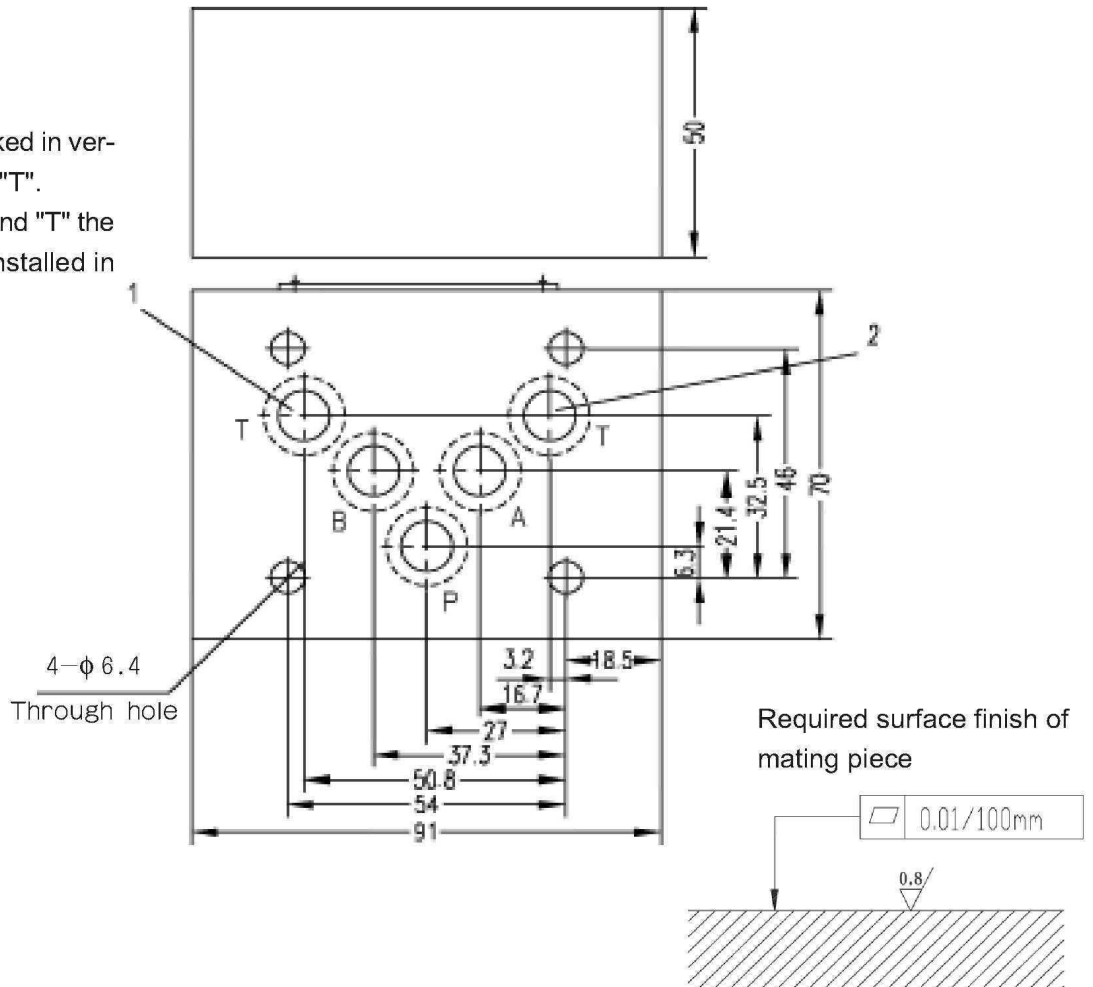
Size 6
O-ring 4-9.25X1.78



Size 10

O-ring 5-12X2

- 1 This port is blocked in versions "F" and "T".
- 2 In versions "F" and "T" the check valve is installed in this channel.



Notice

1. The fluid must be filtered. Minimum filter fineness is 20 μm .
2. The tank must be sealing up and an air filter must be installed on air entrance.
3. Products without subplate when leaving factory, if need them, please ordering specially.
4. Valve fixing screws must be high intensity level (class 10.9). Please select and use them according to the parameter listed in the sample book.
5. Roughness of surface linked with the valve is required to $\sqrt{0.8}$.
6. Surface finish of mating piece is required to 0.01/100mm.