

Controller
Pressure controller:

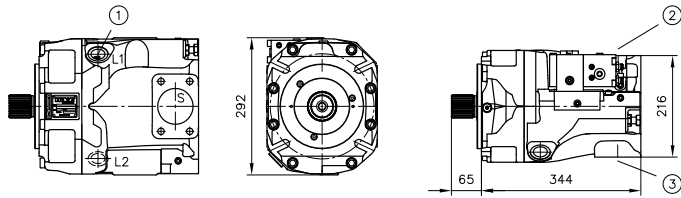
- Pressure controller (N)

Flow controller:

- Load-sensing controller (LSN)

Power controller:

- Power controller (L)

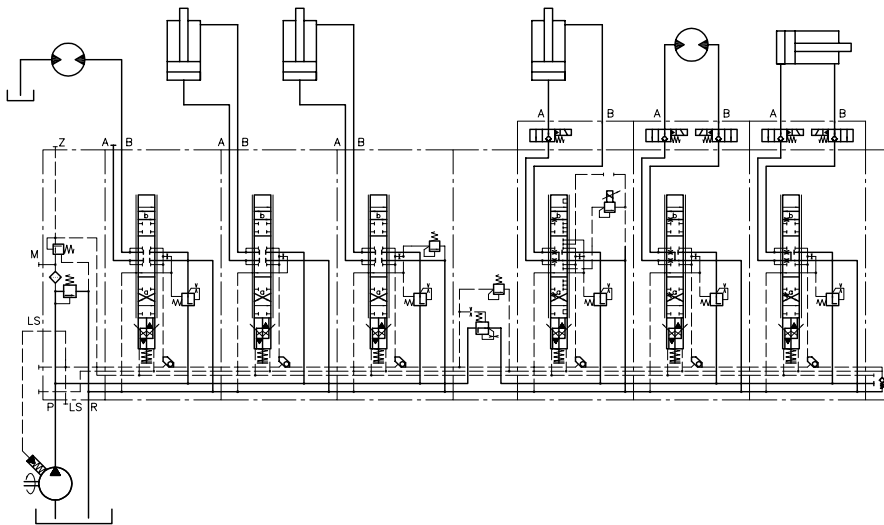
General parameters and dimensions


(connection locations for clockwise operation)

- 1 Drain port
- 2 Suction port
- 3 Pressure connection

Parameters

| | Geom. output volume V_g [cm ³ /rev] | Nominal pressure p_{nom} (p_{max}) [bar] | Self-suction speed n [min ⁻¹] | Ports | | | m [kg] (with controller) |
|------------|--|--|---|------------|--------------|---------------|--------------------------|
| | | | | Drain port | Suction port | Pressure port | |
| V80M - 200 | 200 | 400 (450) | 1800 | G 1 | 3" | 1 1/2" | 130 (136) |

Circuit example:

Associated technical data sheets:

- [Variable displacement axial piston pump V80M: D 7962 M](#)

Similar products:

- Variable displacement axial piston pump type V30D: [Page 20](#)
- Variable displacement axial piston pump type V30E: [Page 16](#)
- Variable displacement axial piston pump type V60N: [Page 26](#)
- Fixed displacement axial piston pump type K60N: [Page 30](#)

Suitable prop. directional spool valve:

- Type EDL: [Page 82](#)
- Type PSL/PSV size 2, 3 and 5: [Page 90](#)
- Type PSLF/PSVF size 3, 5 and 7: [Page 96](#)

Suitable accessories:

- Proportional amplifier type EV1M3: [Page 272](#)
- Proportional amplifier type EV2S: [Page 274](#)
- Proportional amplifier type EV1D: [Page 272](#)