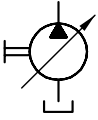


Function



Controller

Pressure controller

- Pressure controller (NR)
- Electro-proportional pressure controller with rising characteristic (PR)
- Electro-proportional pressure controller with falling characteristic (P1R)

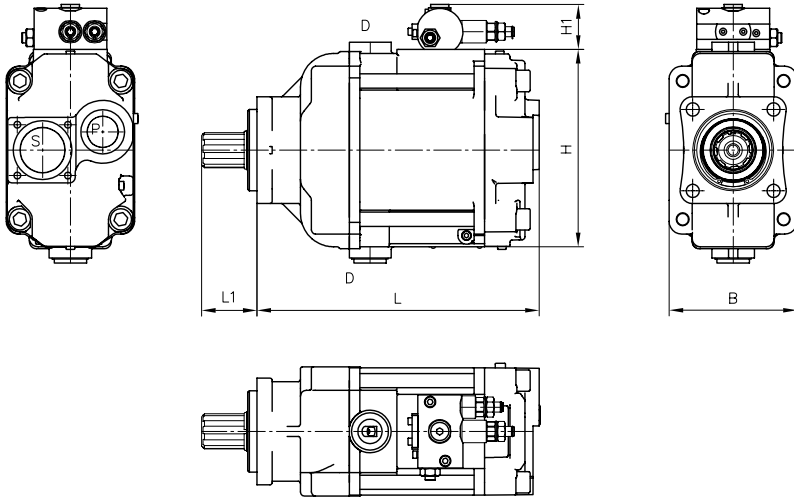
Flow controller

- Load-sensing controller with integrated pressure limitation (LSNR, LSNRT)
- Flow controller for setting a constant, speed-independent volumetric flow (QNR)
- Electro-proportional flow controller with rising characteristic (V)
- Electro-proportional flow controller with falling characteristic (V1)

Power controller

- Power controller (L, /ZL)

General parameters and dimensions



Parameters

	Geom. output volume	Nom. pressure	Max. speed	Dimensions [mm]					m [kg]
				V_g [cm ³ /rev]	p_{nom} (p_{max}) [bar]	n [rpm]	L	L1	
V60N - 060	60	350 (400)	2500	254	55	177	45	115	24
V60N - 090	90		2300	278	55	184	45	120	27
V60N - 110	110		2200	280	55	194	45	125	30
V60N - 130	130	400 (450)	2100	270	55	210	45	130	31

Ports

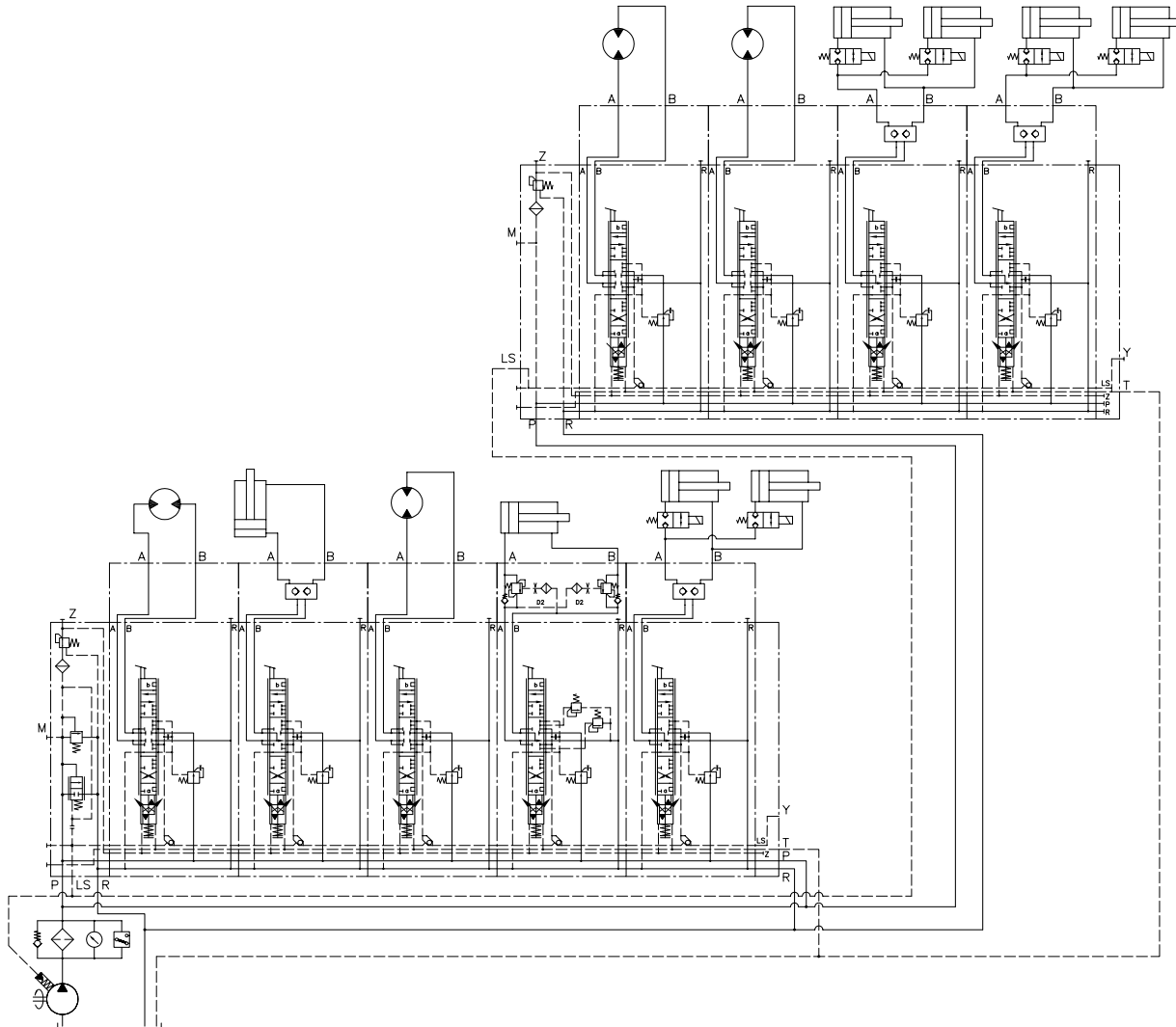
	Pressure port P	Suction port S	Drain port D	LS connection
V60N - 060	G 3/4	1 1/2" SAE J518	G 3/4	G 1/4
V60N - 090	G 1			
V60N - 110				
V60N - 130				

Circuit example:
V60N-130 RSFN-1-0-03 / LSNR-2-250
PSV 31/D280-2

- A 2 L 25/25/EA1/2
- A 2 H 40/40/EA1/2 DRH
- A 2 L 25/25/EA1/2
- A 2 H 3/3 A 100 B 100/EA1/2 AL-0-D 4/120-BL-0-D 4/120
- A 2 H 3/3/EA1/2 DRH
- E 18-G 24

PSV 31-1

- A2 L 25/25/EA1/2
- A2 L 25/25/EA1/2
- A2 H 3/3/EA1/2 DRH
- A2 H 3/3/EA1/2 DRH
- E 1 - G24


Associated technical data sheets:

- [Variable displacement axial piston pump type V60N: D 7960 N](#)

Similar products:

- Variable displacement axial piston pump type V30D: [Page 20](#)
- Variable displacement axial piston pump type V30E: [Page 16](#)
- Fixed displacement axial piston pump type K60N: [Page 30](#)
- Variable displacement axial piston pump type V80M: [Page 24](#)

Suitable prop. directional spool valves:

- Type EDL: [Page 82](#)
- Type PSL/PSV size 2, 3 and 5: [Page 90](#)
- Type PSLF/PSVF size 3, 5 and 7: [Page 96](#)

Suitable accessories:

- Proportional amplifier type EV1M3: [Page 272](#)
- Proportional amplifier type EV2S: [Page 274](#)
- Proportional amplifier type EV1D: [Page 272](#)