



MRQ

PILOT OPERATED PRESSURE RELIEF VALVE

SERIES 51

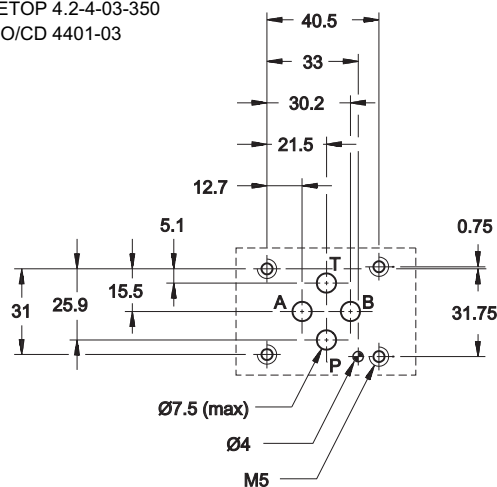
MODULAR VERSION ISO 4401-03 (CETOP 03)

p max **350** bar

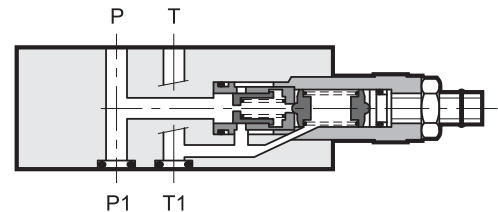
Q max **75** l/min

MOUNTING INTERFACE

CETOP 4.2-4-03-350
ISO/CD 4401-03



OPERATING PRINCIPLE



- The MRQ valve is a pilot operated pressure relief valve made as a modular version with mounting surface according to ISO 4401 (CETOP RP 121H) standards.
- It can be assembled with all ISO 4401-03 (CETOP 03) modular valves without the use of pipes, using suitable tie-rods or bolts.
- It is available in versions for single adjustment on one control line or dual on two control lines and with four different pressure adjustment ranges.
- This valve is normally used as a hydraulic circuit pressure limiting device.
- It is normally supplied with a hexagonal head adjustment screw, locking nut and limitation of the maximum adjustment travel.

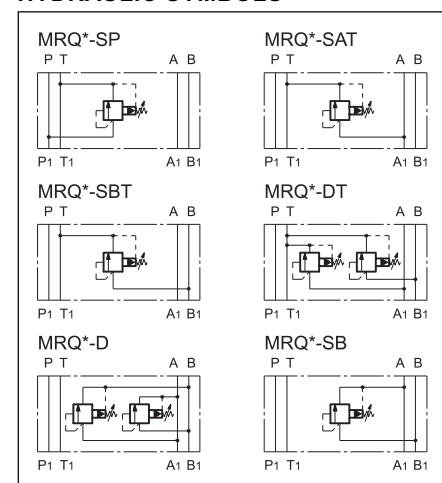
CONFIGURATIONS (see Hydraulic symbols table)

- “SP”: controls the pressure on line P with discharge in T.
- “SAT”: controls the pressure on line A with discharge in T.
- “SBT”: controls the pressure on line B with discharge in T.
- “DT”: controls the pressure on lines A-B with discharge in T.
- “D”: controls the pressure on lines A-B with crossed discharges.
- “SB”: controls the pressure on line B with discharge in A.

PERFORMANCES (measured with mineral oil of viscosity 36cSt at 50°C)

Maximum operating pressure	bar	350
Minimum controlled pressure	see Δp diagram.	
Maximum flow rate in controlled lines and in the free lines	l/min	75
Ambient temperature range	°C	-20 / +50
Fluid temperature range	°C	-20 / +80
Fluid viscosity range	cSt	10 ÷ 400
Fluid contamination degree	According to ISO 4406:1999 class 20/18/15	
Recommended viscosity	cSt	25
Mass: MRQ-SP / MRQ-SAT / MRQ-SBT / MRQ-SB / MRQ-DT / MRQ-D	kg	1,4 2,1

HYDRAULIC SYMBOLS





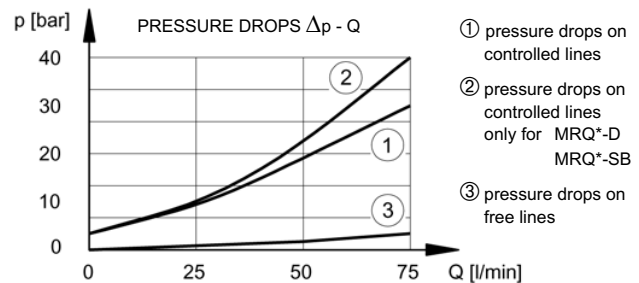
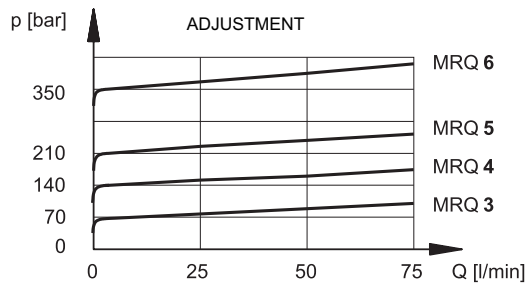
MRQ

SERIES 51

1 - IDENTIFICATION CODE

M	R	Q	-	/	/	51	/	
ISO 4401-03 (CETOP 03) size. Modular version						Seals: omit for mineral oils V = viton for special fluids		
Pilot operated pressure relief valve						Series No. (the overall and mounting dimensions remain unchanged from 50 to 59)		
Pressure adjustment range: 3 = up to 70 bar 5 = up to 210 bar 4 = up to 140 bar 6 = up to 350 bar						M1 = Adjustment knob (omit for adjustment with countersunk hex screw)		
Configurations: SP: single on line P with discharge in T SAT: single on line A with discharge in T SBT: single on line B with discharge in T			DT: double on lines A-B with discharge in T D: double on lines A-B with crossed discharges SB: single on line B with discharge in A					

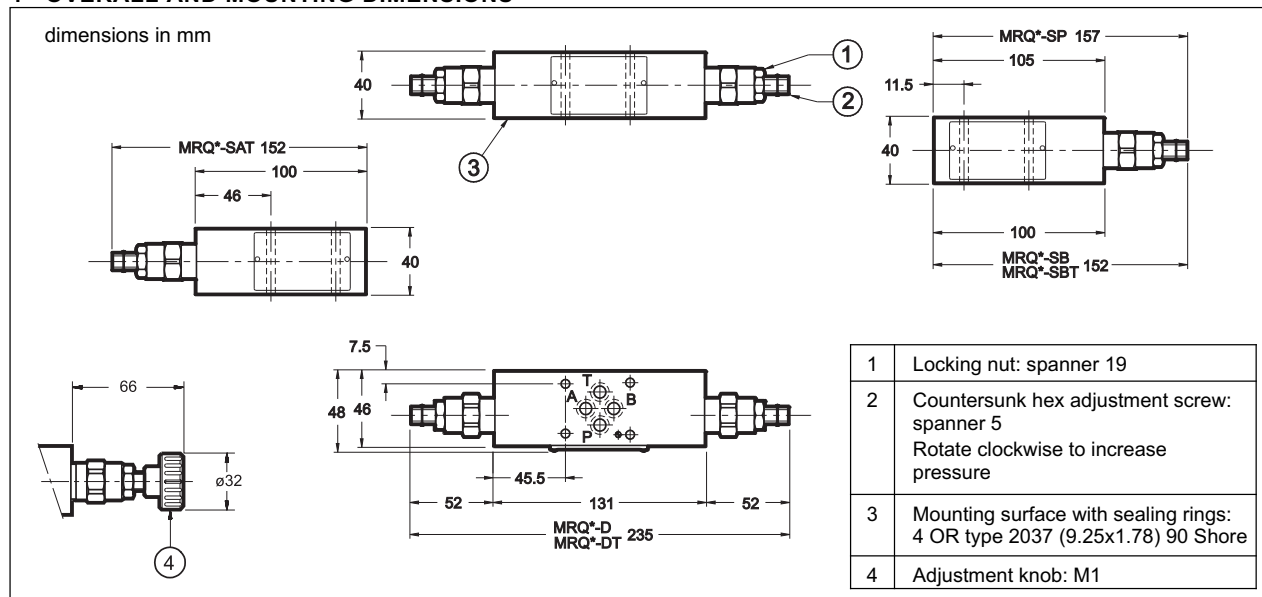
2 - CHARACTERISTIC CURVES (values obtained with viscosity of 36 cSt at 50°C)



3 - HYDRAULIC FLUIDS

Use mineral oil-based hydraulic fluids HL or HM type, according to ISO 6743-4. For these fluids, use NBR seals. For fluids HFDR type (phosphate esters) use FPM seals (code V). For the use of other kinds of fluid such as HFA, HFB, HFC, please consult our technical department. Using fluids at temperatures higher than 80 °C causes a faster degradation of the fluid and of the seals characteristics. The fluid must be preserved in its physical and chemical characteristics.

4 - OVERALL AND MOUNTING DIMENSIONS



DIPLOMATIC OLEODINAMICA SpA
20025 LEGNANO (MI) - P.le Bozzi, 1 / Via Edison
Tel. 0331/472111 - Fax 0331/548328