

FSM - SERIES
WATER FLOW REGULATORS
FLOW SYSTEM MATIC

FSM-200



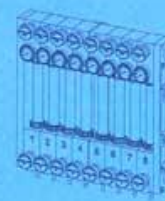
FSM-400



FSM-600



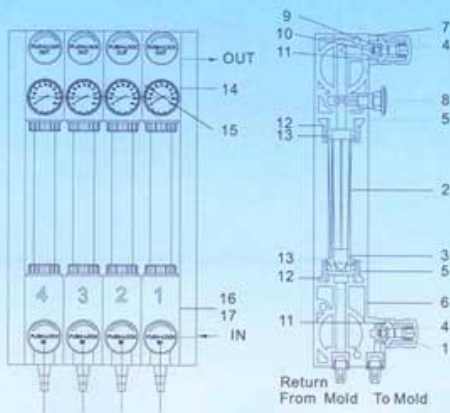
FSM-800



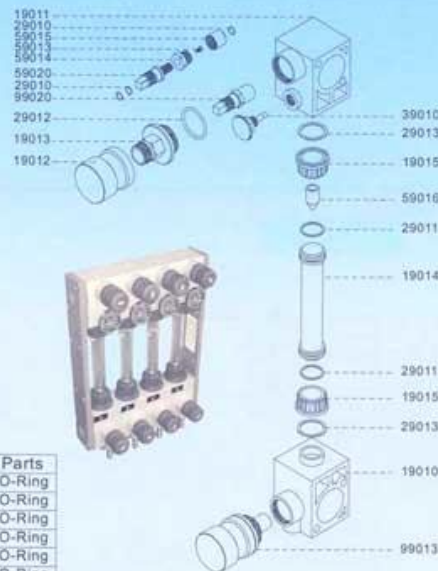
Standard Model

LONG LIFE
HEAVY DUTY
2 TO 12 ZONES
EASY MOUNTING

FSM-200-065	FSM-200-080	FSM-200-110	FSM-200-130
FSM-400-065	FSM-400-080	FSM-400-110	FSM-400-130
FSM-600-065	FSM-600-080	FSM-600-110	FSM-600-130
FSM-800-065	FSM-800-080	FSM-800-110	FSM-800-130
FSM-1000-065	FSM-1000-080	FSM-1000-110	FSM-1000-130
FSM-1200-065	FSM-1200-080	FSM-1200-110	FSM-1200-130



The regulator to the K.D. cooling system



POS.	Part No.	Parts	POS.	Part No.	Parts
1	99013	Control Valve	9	29010	O-Ring
2	19014	Sight Glass	10	29010	O-Ring
3	59016	Cone	11	29012	O-Ring
4	19012	Hand Whell	12	29013	O-Ring
5	19015	Nut for Tube	13	29011	O-Ring
6	19010	Lower Housing CPI	14	29014	O-Ring
7	19011	Upper Housing CPI	15	29015	O-Ring
8	39010	Thermometer	16,17	59010	Side Plate

WATER FLOW REGULATOR

WATER FLOW REGULATORS

FSM - SERIES WATER FLOW REGULATORS FLOW SYSTEM MATIC

FSM-200



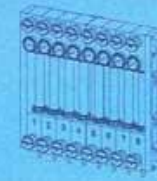
FSM-400



FSM-600



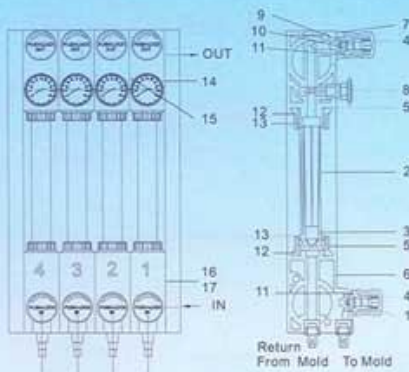
FSM-800



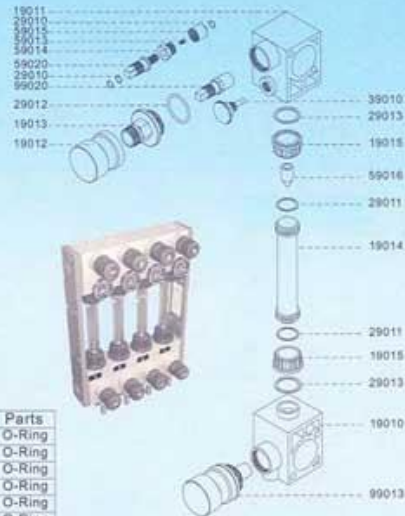
Standard Model

FSM-200-065	FSM-200-080	FSM-200-110	FSM-200-130
FSM-400-065	FSM-400-080	FSM-400-110	FSM-400-130
FSM-600-065	FSM-600-080	FSM-600-110	FSM-600-130
FSM-800-065	FSM-800-080	FSM-800-110	FSM-800-130
FSM-1000-065	FSM-1000-080	FSM-1000-110	FSM-1000-130
FSM-1200-065	FSM-1200-080	FSM-1200-110	FSM-1200-130

LONG LIFE
 HEAVY DUTY
 2 TO 12 ZONES
 EASY MOUNTING



The regulator to the K.D. cooling system



POS.	Part No.	Parts	POS.	Part No.	Parts
1	99013	Control Valve	9	29010	O-Ring
2	19014	Sight Glass	10	29010	O-Ring
3	59016	Cone	11	29012	O-Ring
4	19012	Hand Wheel	12	29013	O-Ring
5	19015	Nut for Tube	13	29011	O-Ring
6	19010	Lower Housing CPI	14	29014	O-Ring
7	19011	Upper Housing CPI	15	29015	O-Ring
8	39010	Thermomenter	16.17	59010	Side Plate

HYSTAR®

FLOW RATING

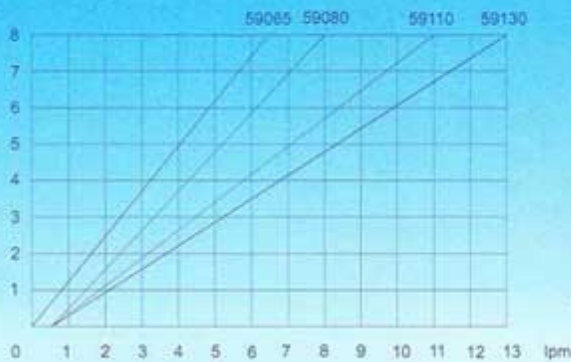
MILLIMETERS(INCHES)

Operating instructions - Spare parts Flow regulator
 Technical Data
 Measuring range per zone
 Brass cone: 1.8 lpm 2.13 lpm
 Optionally, aluminium or P.V.C. cones for smaller flow rates per graph.

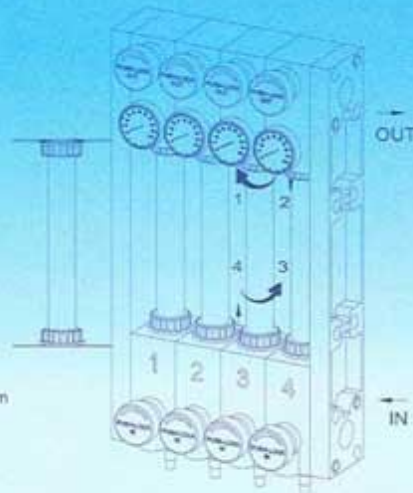
Materials:
 Body: Nylon+GF
 Flow tubes: Polyamide
 Pressure: 8 bar
 Temperature: 0° - 100° C



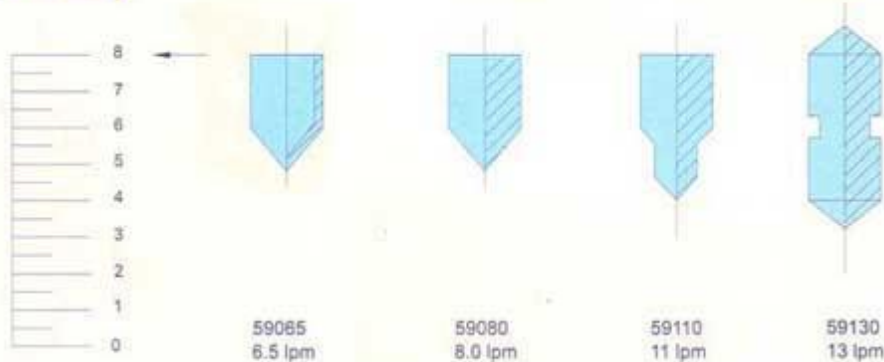
Flow Rating



Easy Cleaning



Brass Cone



Materials: Brass

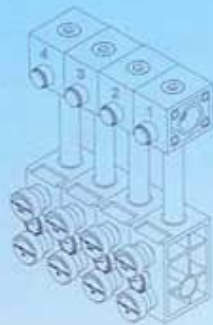
WATER FLOW REGULATOR

DIMENSIONS

MILLIMETERS(INCHES)

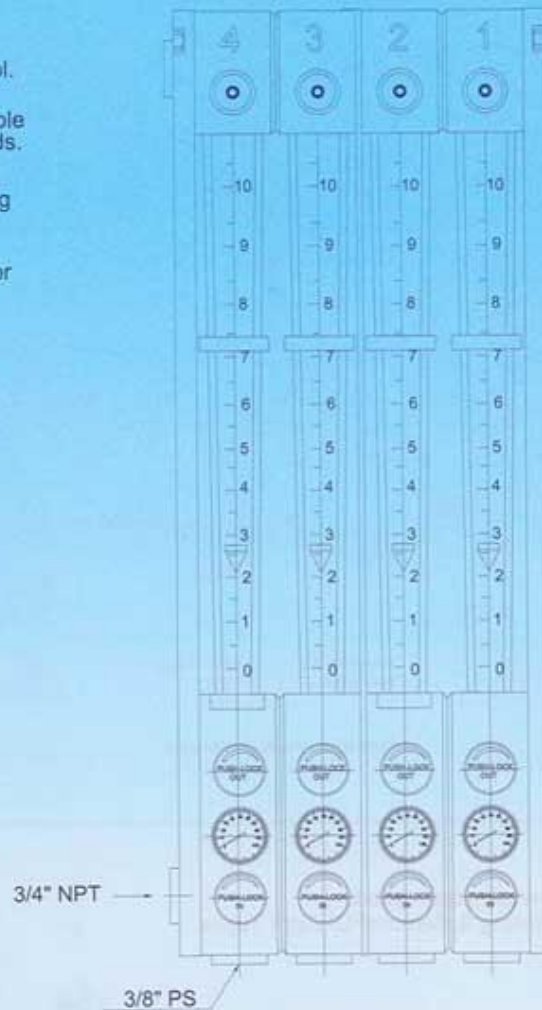
FSML - FLOW SYSTEM MATIC WATER FLOW REGULATORS

- Improved Quality of Parts Through Precise Water Control.
- Quick and Easily Reproduceable Set-Ting When Changing Molds.
- Heavy Duty Construction, Long Life.
- Easy Mounting on Any Make or Model of Machine.
- Saves Energy from Faster Startups.



(NEW)

Can Be Assembled and Used in Any Combination
from 2 to 12 Zones Max.



HYSTAR[®]

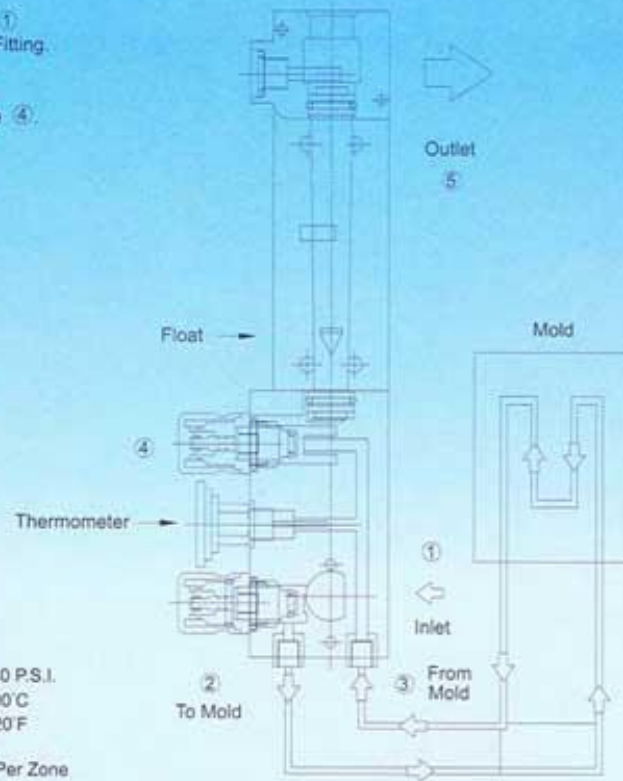
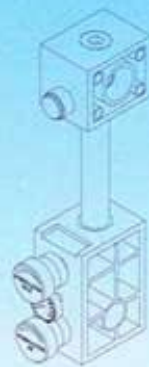
DIMENSIONS

MILLIMETERS(INCHES)

FSML - FLOW SYSTEM MATIC WATER FLOW REGULATORS

Here's How It Works

- Tower Water Etc. is Piped To Water Inlet ①
- Fluid ② Flows Directly To Mold Through Fitting.
- After Circulating Through Mold Channels, Fluid Is Directed Up Sight Tube Through Fitting ③ And Regulated By Control Valve ④.
- Fluid Is Then Returned To Tower, Chiller, Or Temperature Controller Through Outlet ⑤.



Max Pressure: 180 P.S.I.
 Max Temp: 100°C
 220°F

Flow Rate : 10-20 lpm Per Zone

Operating Instructions: Cleaning & Removal Of Sight Tubes.

- Remove * TOP PLUG * & * FIXED PLUG *.
- To Clean Put Brush Into Sight Tube Through * TOP PLUG * Hole Brush Up & Down.
- To Remove Sight Tube After Carry Out *C* Rotate Sight Tube 180° & Push It Up A Short Way.
- Now Pull It Down & Out Towards Yourself.

