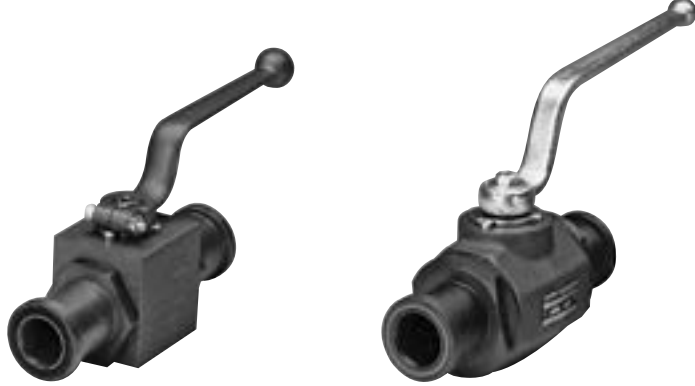


KHB & KHM Series

2-way Ball Valves with Split Flange Connections



KHB Series
Block Housing

KHM Series
Forged Housing

Specifications

- 1/2" - 2" Full Port Design
- SAE Code 61 and 62 Split Flange Connections
- Carbon Steel or Stainless Steel Housings
- Block Housing: Sizes 16 - 25
- Forged Housing: Sizes 32 - 50
- Ball Seals: Polyacetal (*standard*)
- O-Rings: Fluoroelastomer (FPM) (*standard*)
- Operating Pressure: to 6000 psi depending on valve size and seal materials selected
- Temperature Range: 14°F to 176°F with standard materials (1114) up to maximum pressure rating. Extended temperature range -40°F to 392°F on request with special materials and reduced pressure rating (*see page A1-3*).

Model Code

KHB - 20 F3 - 1 1 1 4 X - 12X - A - L

Housing Type

- KHB = Block Housing - Sizes 16-25
- KHM = Forged Housing - Sizes 32-50

Nominal Sizes

Valve Size	Nominal Flange Size	Flange Dash Size
16	1/2"	-8
20	3/4"	-12
25	1"	-16
32	1-1/4"	-20
40	1-1/2"	-24
50	2"	-32

Connection Type

SAE J518 Four bolt split flange type:

- F3 = Standard Pressure Series, Code 61
- F6 = High Pressure Series, Code 62

Body Material

- 1 = Carbon Steel
- 3 = Stainless Steel

Spindle and Ball Material

- 1 = Carbon Steel (*ball is chrome plated, spindle is zinc plated*)
- 3 = Stainless Steel

Ball Seal Material

- 1 = Polyacetal (*standard*)
- 3 = PTFE (*1500 psi max*)
- 8 = PEEK

O-Ring Material

- 2 = NBR (*Buna N*)
- 3 = PTFE Spindle Seals and FPM (*fluoroelastomer*) O-Rings (*1500 psi max*)
- 4 = FPM (*Fluoroelastomer*) (*standard*)
- 5 = EPR

Split Flange Material

- X = Without Split Flanges (*order split flanges separately see page C2-21*)

Handle Codes

- 09X = Without Handle, Sizes 16-50
- 12X = Offset Aluminum, Sizes 16-25
- 16X = Offset Steel, Sizes 32-50
- 18x = Offset Stainless Steel - option for stainless valves size 06-50

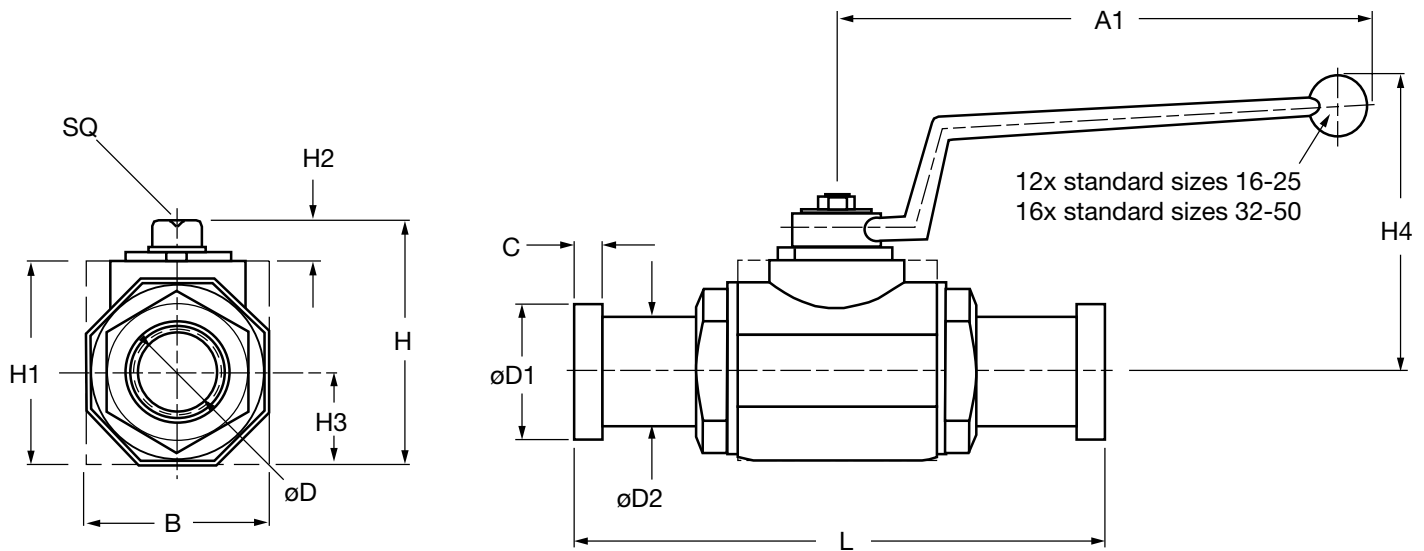
Housing Surface Finish

- A = Zinc plated (*standard for all carbon steel valves*)
- (omit) = No plating for Stainless Steel

Locking Device Option

- L = Locking Device (*see page A1-22 to order locking device separately*)
- LS = Locking Device with 5 amp Limit Switch, Available for sizes 20-50 (*Not available with PTFE Spindle Seals*)

Dimensions



For dimensional information on flanges, C2-21

SAE Code 61 (...F3)

Mw	Max. psi*	Size	A1	B	C	øD	øD1	øD2	H	H1	H2	H3	H4	L	SQ	Wt.
KHB-16 F3	5000	1/2"	6.42 (163)	1.50 (38)	0.27 (6.8)	0.51 (13)	1.19 (30.2)	0.94 (24)	2.44 (62)	1.77 (45)	0.43 (11)	0.75 (19)	3.27 (83)	5.94 (151)	0.47 (12)	2.4 (1.1)
KHB-20 F3	5000	3/4"	7.20 (183)	1.89 (48)	0.27 (6.8)	0.75 (19)	1.50 (38.1)	1.24 (31.5)	2.95 (75)	2.24 (57)	0.43 (11)	0.96 (24.5)	3.62 (92)	6.69 (170)	0.55 (14)	4.0 (1.8)
KHB-25 F3	5000	1"	7.20 (183)	2.24 (57)	0.31 (8)	0.98 (25)	1.75 (44.45)	1.50 (38)	3.23 (82)	2.52 (64)	0.43 (11)	1.12 (28.5)	3.74 (95)	6.95 (176.5)	0.55 (14)	5.1 (2.3)
KHM-32 F3	4000	1-1/4"	12.01 (305)	2.95 (75)	0.31 (8)	1.18 (30)	2.00 (50.8)	1.69 (43)	4.06 (103)	3.35 (85)	0.47 (12)	1.48 (37.5)	5.94 (151)	7.54 (191.4)	0.67 (17)	9.0 (4.1)
KHM-40 F3	3000	1-1/2"	12.01 (305)	3.35 (85)	0.31 (8)	1.50 (38)	2.38 (60.35)	1.97 (50)	4.49 (114)	3.78 (96)	0.47 (12)	1.67 (42.5)	6.18 (157)	9.09 (231)	0.67 (17)	13.1 (5.9)
KHM-50 F3	3000	2"	12.01 (305)	4.13 (105)	0.38 (9.6)	1.89 (48)	2.81 (71.4)	2.44 (62)	5.18 (131.5)	4.43 (112.5)	0.47 (12)	2.07 (52.5)	6.46 (164)	9.21 (234)	0.67 (17)	19.2 (8.7)

SAE Code 62 (...F6)

Model	Max. psi*	Size	A1	B	C	øD	øD1	øD2	H	H1	H2	H3	H4	L	SQ	Wt.
KHB-16 F6	6000 CS 5800 SS	1/2"	6.41 (163)	1.50 (38)	0.31 (7.8)	0.51 (13)	1.25 (31.8)	0.94 (24)	2.44 (62)	1.77 (45)	0.43 (11)	0.75 (19)	3.27 (83)	5.94 (151)	0.47 (12)	2.4 (1.1)
KHB-20 F6	6000 CS 5000 SS	3/4"	7.20 (183)	1.89 (48)	0.35 (8.8)	0.75 (19)	1.63 (41.3)	1.26 (32)	2.95 (75)	2.24 (57)	0.43 (11)	0.96 (24.5)	3.62 (92)	6.69 (170)	0.55 (14)	4.0 (1.8)
KHB-25 F6	6000 CS 5000 SS	1"	7.20 (183)	2.24 (57)	0.37 (9.5)	0.98 (25)	1.87 (47.6)	1.50 (38)	3.23 (82)	2.52 (64)	0.43 (11)	1.12 (28.5)	3.72 (95)	7.81 (198.5)	0.55 (14)	5.4 (2.4)
KHM-32 F6	6000 CS 5000 SS	1-1/4"	12.01 (305)	2.95 (75)	0.41 (10.3)	1.18 (30)	2.13 (54)	1.73 (44)	4.06 (103)	3.35 (85)	0.47 (12)	1.48 (37.5)	5.94 (151)	8.80 (223.4)	0.67 (17)	10.6 (4.8)
KHM-40 F6	6000 CS 5000 SS	1-1/2"	12.01 (305)	3.35 (85)	0.50 (12.6)	1.50 (38)	2.50 (63.5)	2.01 (51)	4.49 (114)	3.78 (96)	0.47 (12)	1.67 (42.5)	6.18 (157)	11.06 (281)	0.67 (17)	15.4 (7.0)
KHM-50 F6	6000 CS 5000 SS	2"	12.01 (305)	4.13 (105)	0.50 (12.6)	1.89 (48)	3.13 (79.4)	2.64 (67)	5.18 (131.5)	4.43 (112.5)	0.47 (12)	2.07 (52.5)	6.46 (164)	12.40 (315)	0.67 (17)	22.5 (10.2)

*Dependent upon valve and seal materials selected.

Notes:

- Note difference in pressure ratings for Carbon Steel (CS) and Stainless Steel (SS).
- Dimensions are in inches (mm) and lbs (kg).
- Dimensions are for general information only, all critical dimensions should be verified by requesting a certified print.