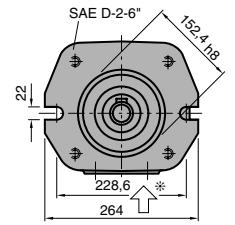
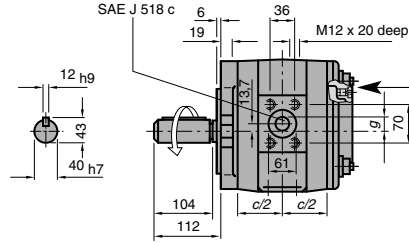
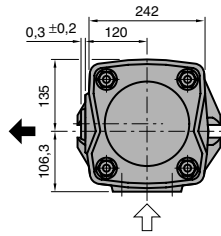
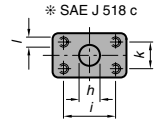
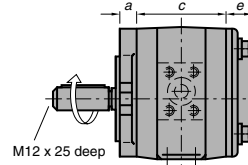
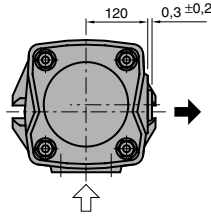


IPH 6

Standard design



Opening must be closed during operation. Tightening torque MA = 18 Nm. Before the pump is taken into service, the opening can be used for filling or deaeration, depending on the installation of the pump. Screw plug M10 x 1, hexagon socket, width across flats 5.



Weight and dimensions

	a	b	c	e	g	h	i	k	l	kg
IPH 6 – 80	26	63	171	49	32.5	50	77.8	42.9	M 12 x 23 deep	50.5
IPH 6 – 100	26	63	181	49	36	50	77.8	42.9	M 12 x 23 deep	54
IPH 6 – 125	26	63	193	47	39	50	77.8	42.9	M 12 x 23 deep	58

SAE flange no.

SAE flange no.	SAE flange no.
14	15
14	15
14	15

Performance data as per page 5
For SAE suction and discharge flanges see page 22.
Observe permissible operating pressures for pressure flanges.

Type	Size	Sense of rotation	Mounting flange	Shaft end
IPH 6	80	1	SAE-2-hole flange Dimensions as above	Dimensions as above
	100			
	125			
		6	Alternative: SAE-4-hole flange SAE D - 4 - 6° 152.4 h8	Involute splines ANSI B92 1a 13 T 8/16 DP 30°
				Involute splines ANSI B92 1a 13 T 8/16 DP 30°

Ordering-code