

Application and features

CBD1-F2-CC series gear pump is dynamic component of the hydraulic system. It features high strength aluminum-alloy shell, float bushings and DU bearing cover. It has characteristic of simple structure, reliable work and long service life, etc. It is widely used in the hydraulic system of truck, car, machine tool, Medical treatment machine, construction

machinery, lift and transport machinery, mine machinery, and agriculture etc.



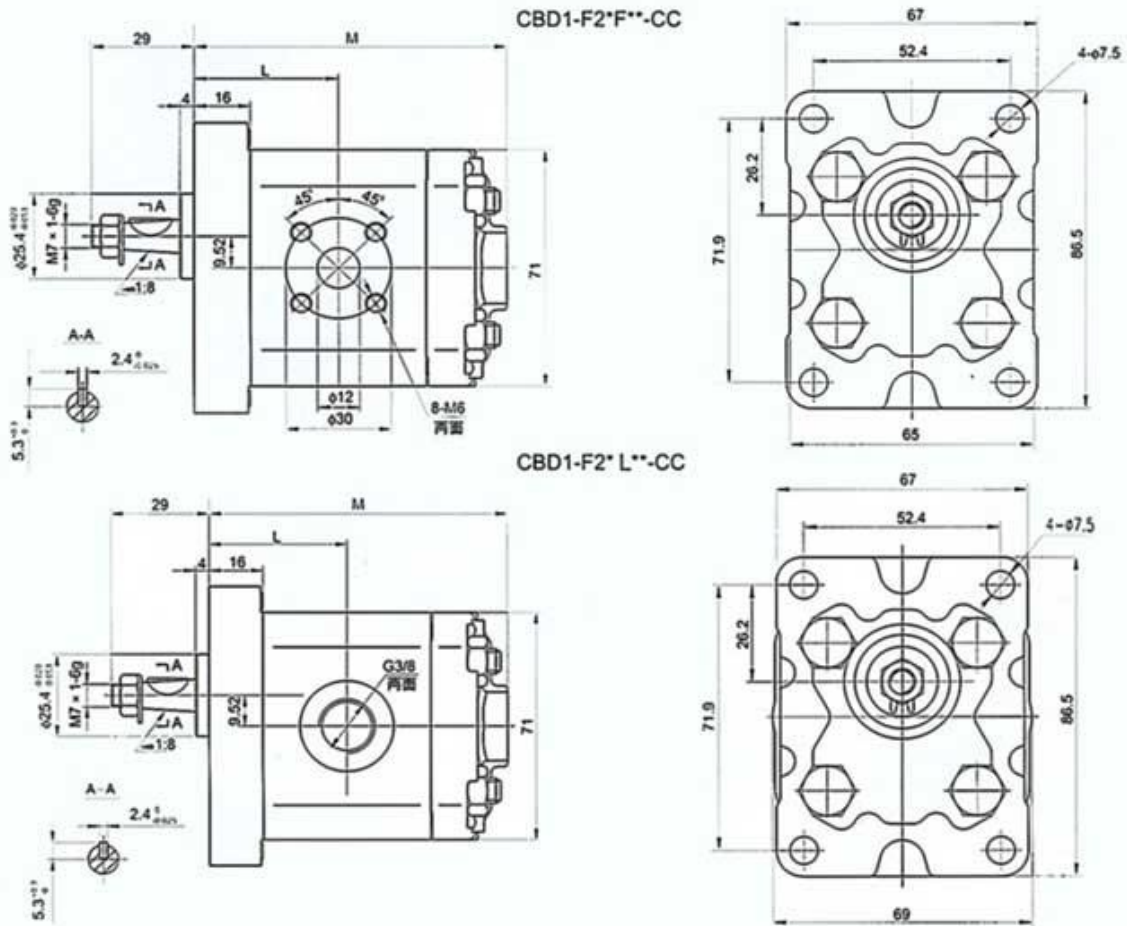
Specification

Model	Disp.(ml/r)	Pressure(Mpa)		Speed(r/min)			Working oil	Filter precision (μm)	Oil temperature (°C)	Volumetric efficiency (%)	Input power (kw)	Weight (Kg)
		Rated	Max	Rated	Max	Min						
CBD1-F2-201.1	1.1	20	25	2000	6000	600	L-HM46 GB/T 7631.2-87	≤ 25	-20~80	≥ 93	0.86	0.92
CBD1-F2-201.3	1.3										1.02	0.94
CBD1-F2-201.6	1.6										1.25	0.95
CBD1-F2-202.1	2.1				1.65						0.97	
CBD1-F2-202.7	2.7				2.12						1.00	
CBD1-F2-203.2	3.2				2.51						1.02	
CBD1-F2-203.7	3.7				2.90						1.05	
CBD1-F2-204.2	4.2				3.29						1.07	
CBD1-F2-204.8	4.8	16	20	2000	3500	600	L-HM46 GB/T 7631.2-87	≤ 25	-20~80	≥ 93	3.76	1.10
CBD1-F2-205.8	5.8				2900						4.55	1.15
CBD1-F2-208.0	8.0				2100						6.27	1.25

CBD1-F2



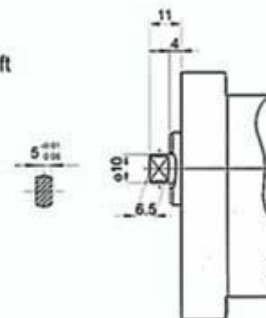
CBD1-F2-CC Series Gear Pump External Dimension



Mounting Dimensions table

Model	L(mm)	M(mm)
CBD1-F2-201.1	34	75
CBD1-F2-201.3	34.5	76
CBD1-F2-201.6	35	77
CBD1-F2-202.1	36	79
CBD1-F2-202.7	37	81
CBD1-F2-203.2	38	83
CBD1-F2-203.7	39	85
CBD1-F2-204.2	40	87
CBD1-F2-204.8	41	89
CBD1-F2-205.8	43	93
CBD1-F2-208.0	47	101

Flat key shaft



Application and features

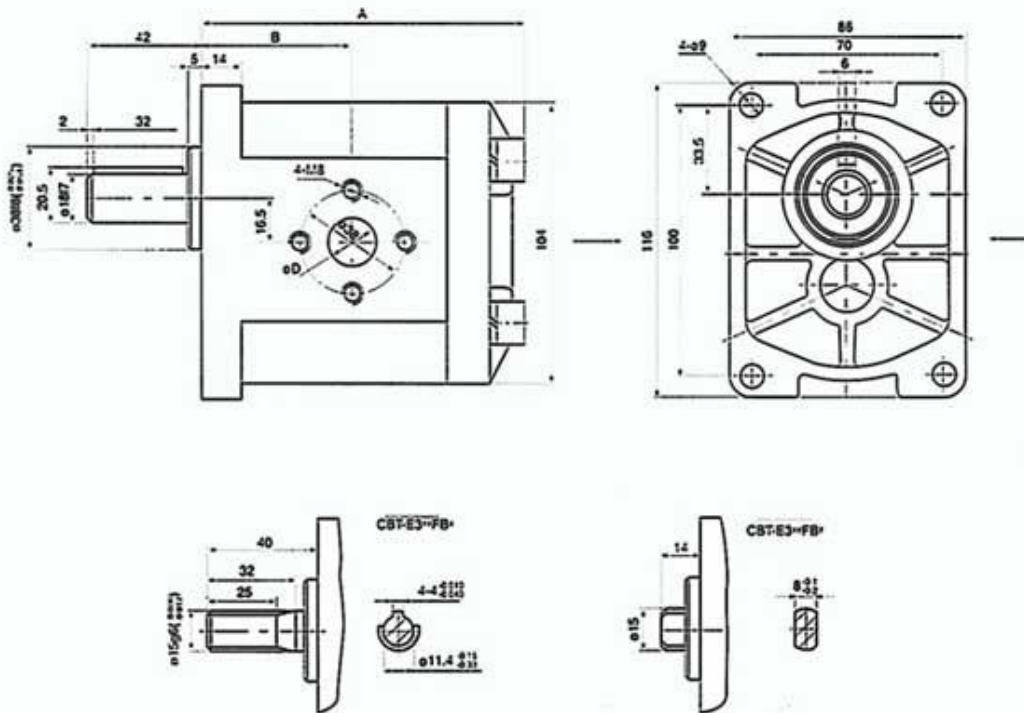
CBT-E3 series gear pump is the dynamic component of the hydraulic system. It features high precision gears, high strength aluminum-alloy shell, float bushings, and DU bearings. It has the characteristics of simple structure, light weight, high efficiency, low noise, and high reliability, etc. It is widely used in the hydraulic system of truck, construction machinery, lift and transport machinery, mine machinery, and agriculture machinery, etc.



Specification

Model	Disp. (ml/r)	(MPa) Pressure		(r/min) Speed			Working oil	Filter Precision (μ m)	oil temperature ($^{\circ}$ C)	Volumetric efficiency (%)	Input Power (KW)	Weight (Kg)
		Rated	Max.	Rated	Max.	Min.						
CBT-F306	6	16	20	2000	3000	600	L-HM46 GB/T 7631.2-87	< 25	-20-80	> 93	3.8	2.6
CBT-F308	8										5.1	2.7
CBT-F310	10										6.4	2.8
CBT-F312	12										7.7	2.85
CBT-F314	14										9.0	2.88
CBT-F316	16										10.3	3.01
CBT-F320	20										12.8	3.20
CBT-F325	25										16.1	3.41

Installation dimensions



Model	A(mm)	B(mm)	D(mm)	
			(Inlet)	(Outlet)
CBT-F306	102	46	18	15
CBT-F308	105.5	47.5		
CBT-F310	108	49		
CBT-F312	112	51		
CBT-F314	114	52		
CBT-F316	118	54		
CBT-F320	124	57		
CBT-F325	132	61		

Application and features

CBT-F3**/** gear pump is the dynamic component of the hydraulic system. The pump is three-sheet type structure and adopts axial clearance automatic compensation device. It is equipped with DU bearing and strength cast iron cover. It has characteristic of simple structure, reliable work and long service life etc. It is widely used in the hydraulic system of engineering machinery hoist and transport machinery and agriculture machinery.



Model code

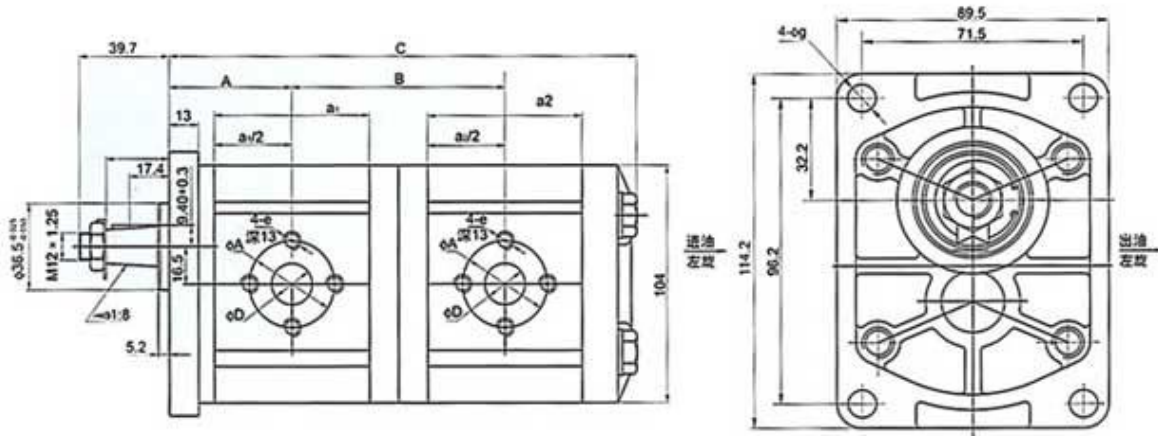
CB **T - F** **3** **** / **** **F1** **Z1** *****
 ① ② ③ ④ ⑤ ⑥ ⑦ ⑧ ⑨

- ①、Gear Pump
- ②、Structure code
- ③、20 MPa Pressure Grade
- ④、m=3 Gear Module
- ⑤、ml/r:4, 6, 8, 12, 14, 16, 20, 25 Front Pump Nominal Discharge ml/r
- ⑥、ml/r:4, 6, 8, 12, 14, 16, 20, 25 Back Pump Nominal Discharge ml/r
- ⑦、Oil In\outlet Flange connection
- ⑧、Taper Shaft type
- ⑨ Turn Direction Omit-Turn to right L-Turn to left

CBT-F3/****



CBT-F3**/** Gear Pump External Dimension



Installation dimensions

Discharge ml/r	Size	Inlet			Outlet		
		φD	φA	c	φD	φA	c
4	52	13	30	M6	13	30	M6
6	54						
8	57.5						
10	60	20	40	M8			
12	64						
14	66						
16	70						
20	76						
25	84	22					

Model	Size A	Size B	Size C
CBT-F3**/**FIZI®	19+a1/2	26+a1/2+a2/2	68.5+a1+a2