

**GO SILENTLY  
SAVING ENERGY**



**ENERGY**



**WIND**

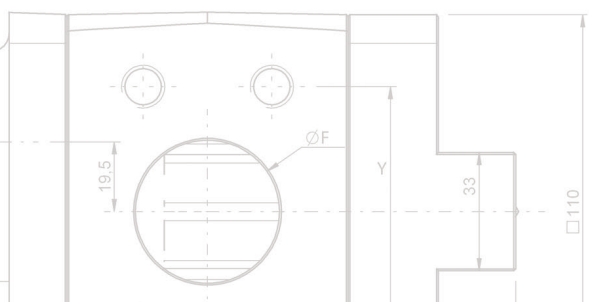
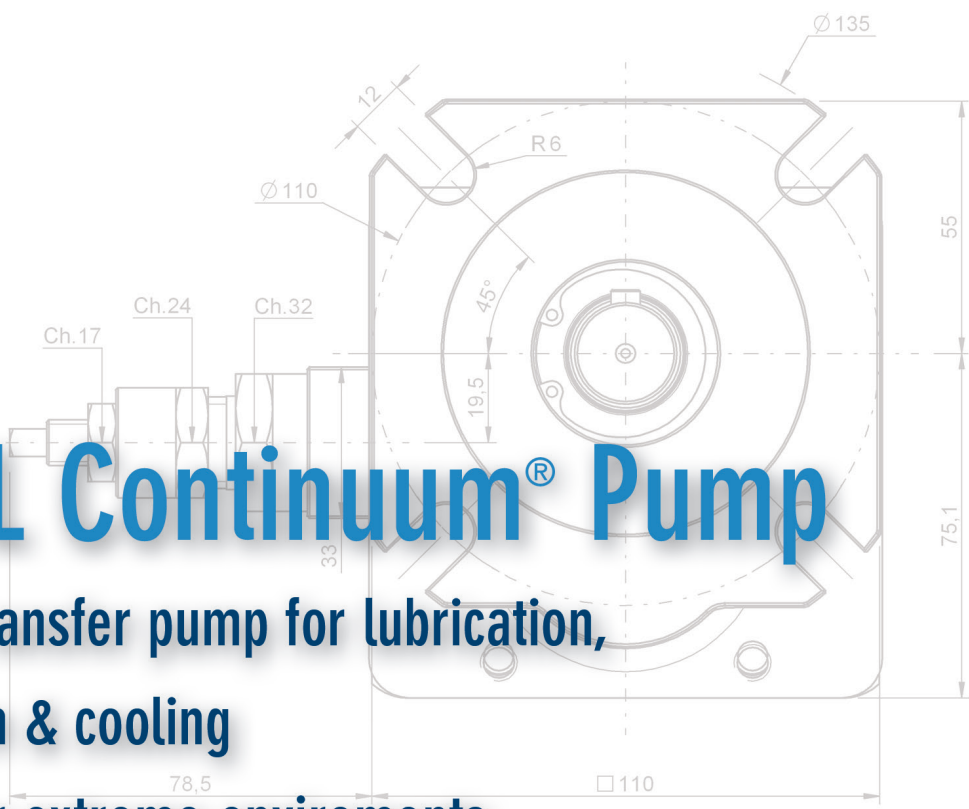


**INDUSTRIAL**

# 2VHL Continuum<sup>®</sup> Pump

Silent transfer pump for lubrication,  
filtration & cooling

Ideal for extreme environments



## 2VHL Continuum® Pumps

**2VHL Continuum® Pumps** are transfer pumps designed to handle a wide variety of fluids, with no operating noise. In few words transport and silence.

The rotors of **2VHL Continuum® pump** have been designed using the well known Continuum helical rotors, which are a byword for silence, energy consumption reduction and high performance.

The Continuum® concept, heart of **2VHL Continuum® pump**, is based on three patented technological innovations:

- The rotors profile
- The screw step
- The inner force balancing

Three innovations that applied to the most advanced design and manufacturing capability of Settima, drive to a final results of a sustainable fluid power:

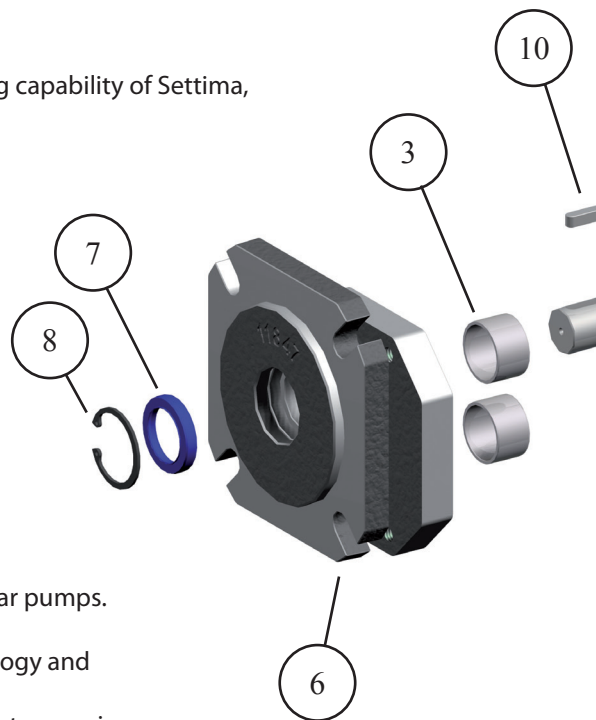
- Smooth changes in pressure growth
- High efficiency
- No noise
- Energy consumption reduction

The standard housing sections of **2VHL Continuum® pump** are made of grey cast iron, the helical rotors are manufactured with high strength hardened steel, located in a multi compound plain bearing bushes.

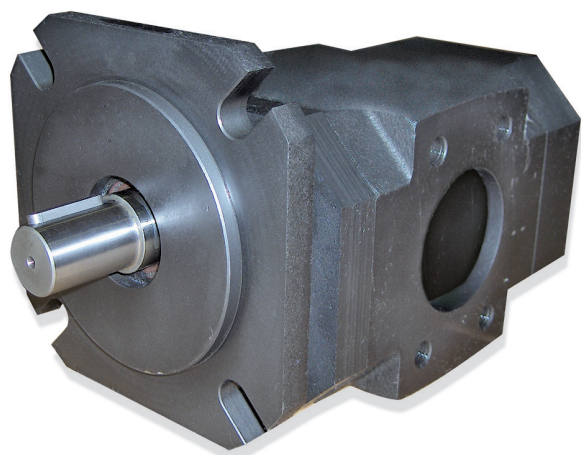
Drive shaft is sealed by rotary shaft lip-type sealing.

**2VHL Continuum® pumps** are suitable for fluids with medium to high viscosity. **2VHL Continuum® Pump** dimensions and flanges are similar to the standard gear pumps.

The specific configuration of **2VHL Continuum® pump**, the high level of technology and the material used are the perfect combination for the last generation wind mills industry. **2VHL Continuum® pump** means a long life as the wind mills industry requires.



## Applications



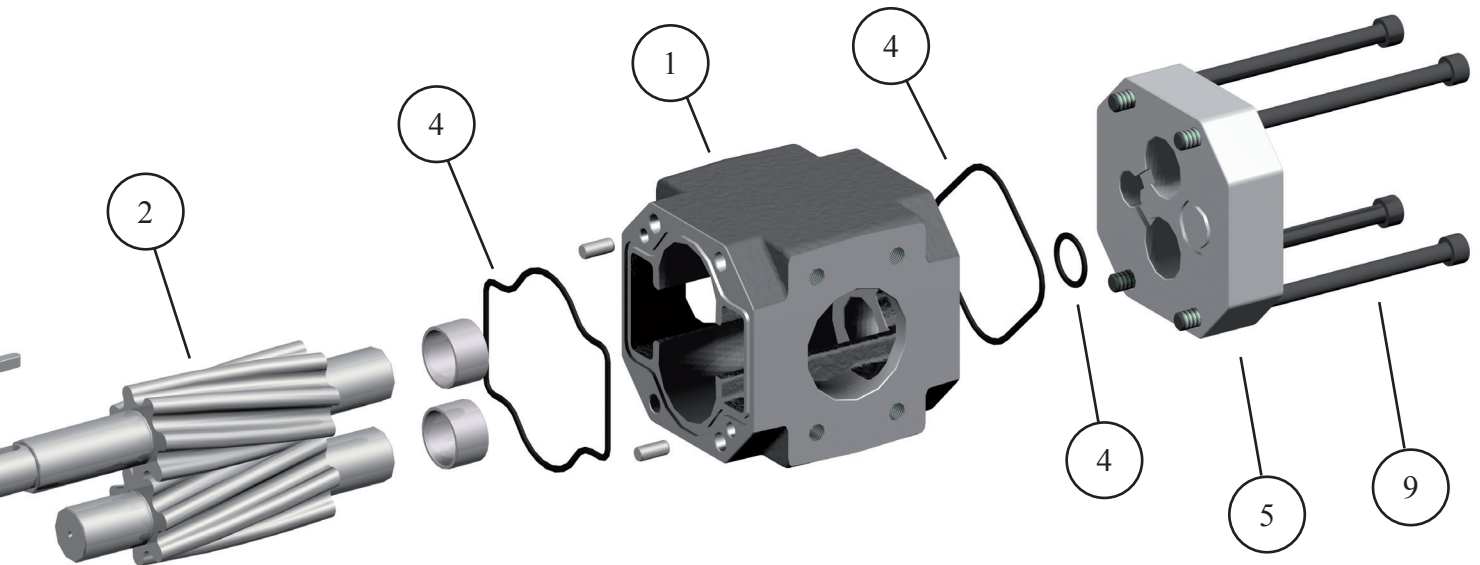
### APPLICATIONS

- Lubrication
- Turbine and compressors (gear boxes, transmissions, bearings, shafts)
- Filtration
- Cooling
- Recycle

### FLOW MEDIA

- Hydraulic fluids (mineral and synthetic)
- Thermal oils
- Emulsions
- Polyglycol oil
- Heavy oil
- Other fluids upon req

## Product Description



### Index

N°	Description	Material
1	Body	GJL 250*
2	Gears	Steel
3	Bushing DU	Steel
4	O Ring	NBR/FKM (FPM/EPDM)*
5	End cover	GJL 250*
6	Front cover	GJL 250*
7	Lip seal	NBR/FKM (FPM/EPDM)*
8	Circlip	Steel
9	Screws	Steel
10	Shaft key	Steel

\* others available upon request

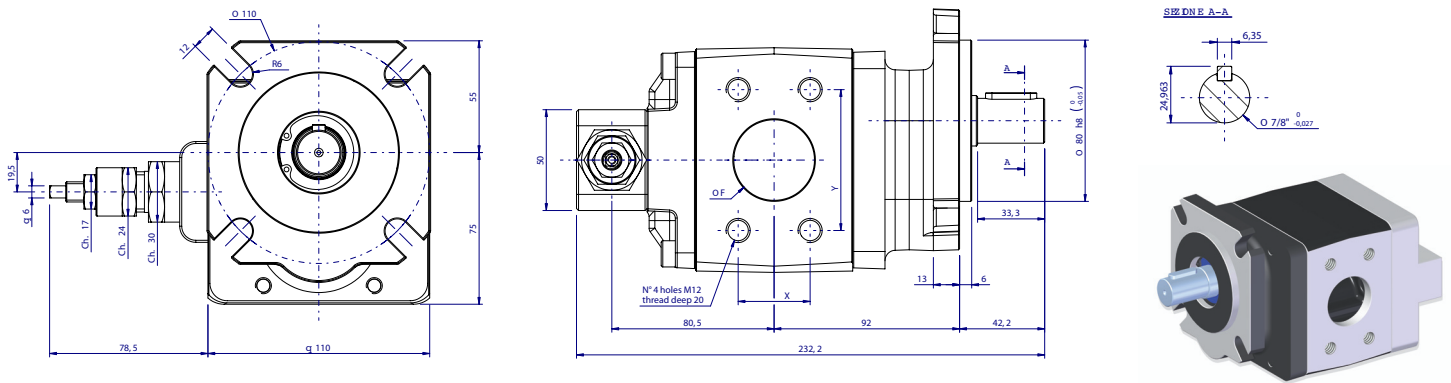
### Standard performances

Characteristics	Unit	Minimum	Maximum
Gas content (undissolved)	Vol. %	-	10
Level of contamination	ISO4406	-	21/19/17
Kinematic viscosity	mm <sup>2</sup> /s	7	100.000*
Temperature (NBR seals)	°C	-25	80
Temperature (FPM seals)	°C	-25	150
Acoustic emissions	db(A)	52 @ 1500 rpm	63 @ 2950 rpm
Pressure	bar	-	25 (peak: 40)

Above are listed the standard performances, whenever it's necessary to overtake those standards please contact **Settima**

\* For viscosity level over 15.000 mm<sup>2</sup>/s please contact **Settima**

# GR 47 - Dimensional drawing

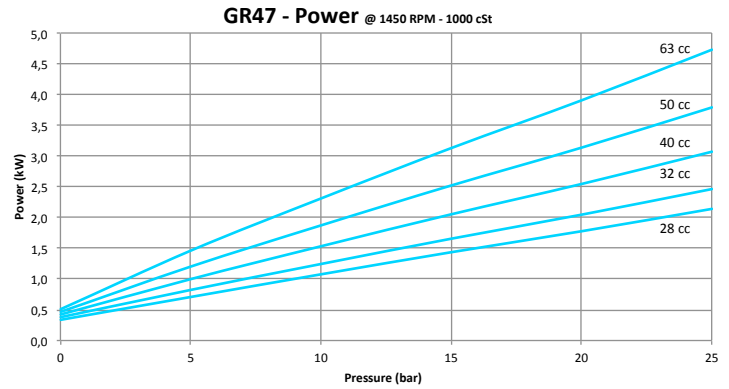
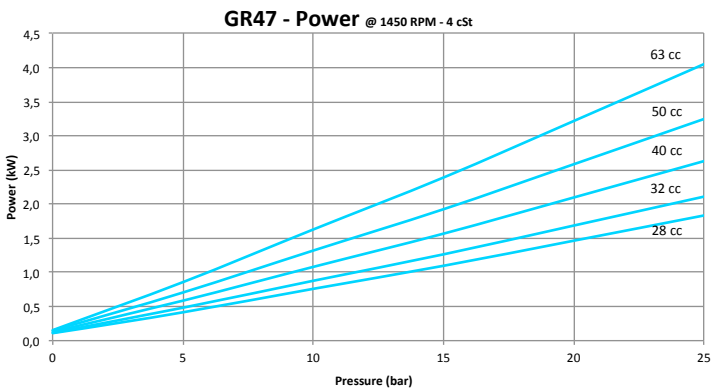
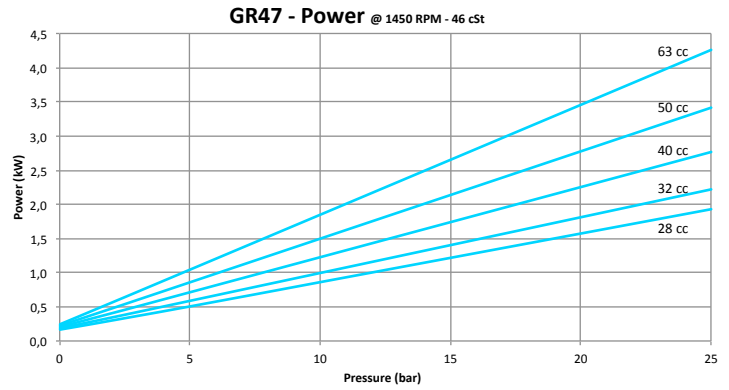
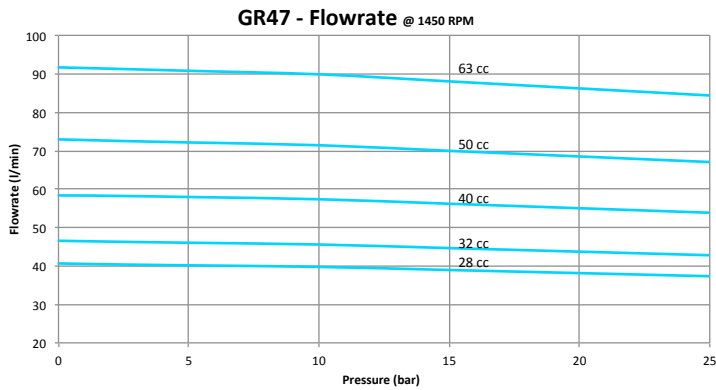


## Details

Nominal displacement [cm <sup>3</sup> ]	Description	ØF [mm]	X [mm]	Y [mm]	Weight [kg]
28	SAE 1 1/2"	40	35,70	69,85	9,5
32	SAE 1 1/2"	40	35,70	69,85	
40	SAE 1 1/2"	40	35,70	69,85	
50	SAE 2"	50	42,90	77,80	
63	SAE 2"	50	42,90	77,80	

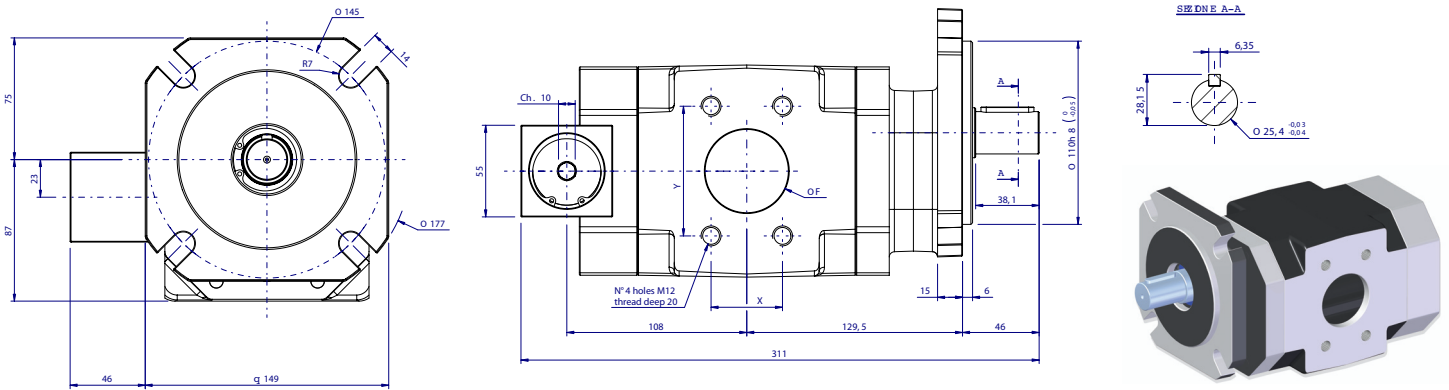
## Performance

In case of deviation of the fluid kinematic viscosity from the value reported in the below graphic (46 mm<sup>2</sup>/s), the flow rate can also deviate but with minimum values.





# GR 55 - Dimensional drawing

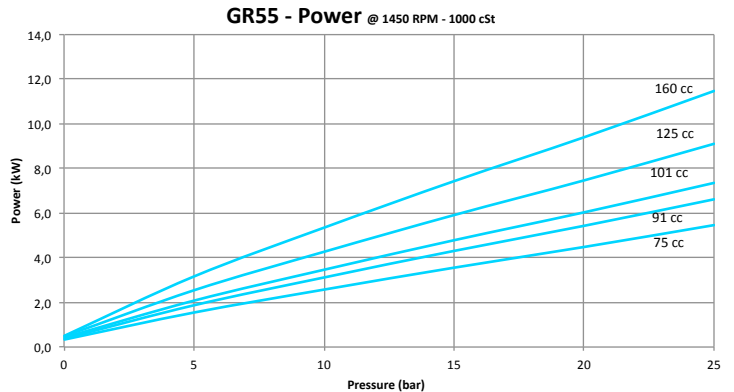
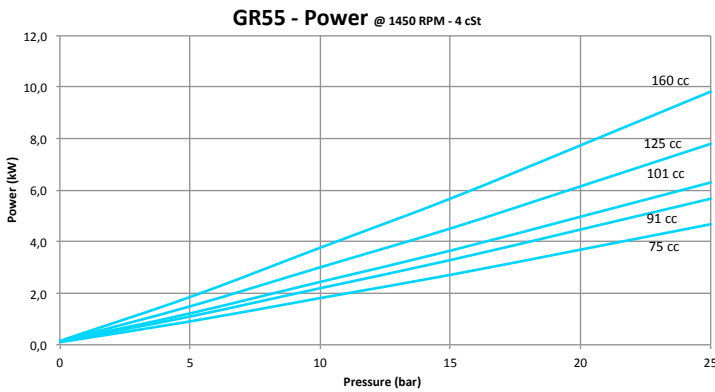
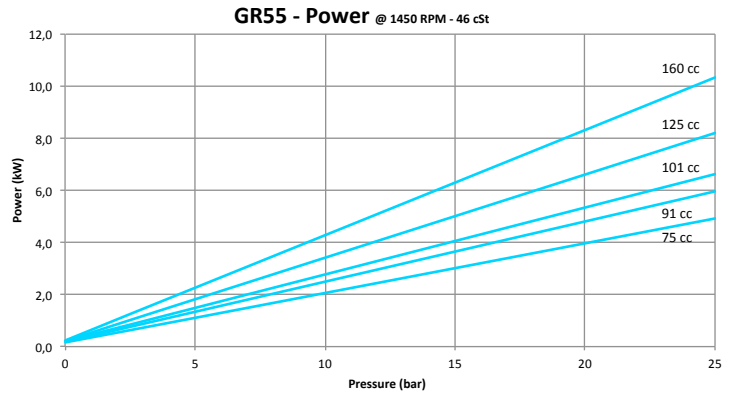
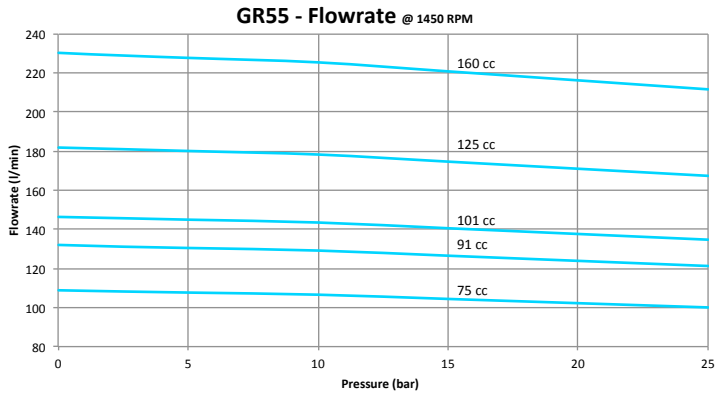


## Details

Nominal displacement [cm <sup>3</sup> ]	Description	ØF [mm]	X [mm]	Y [mm]	Weight [kg]
75	SAE 2"	50	42,90	77,80	19
91	SAE 2"	50	42,90	77,80	
101	SAE 2"	50	42,90	77,80	
125	SAE 2 1/2"	63	50,80	88,90	
160	SAE 2 1/2"	63	50,80	88,90	

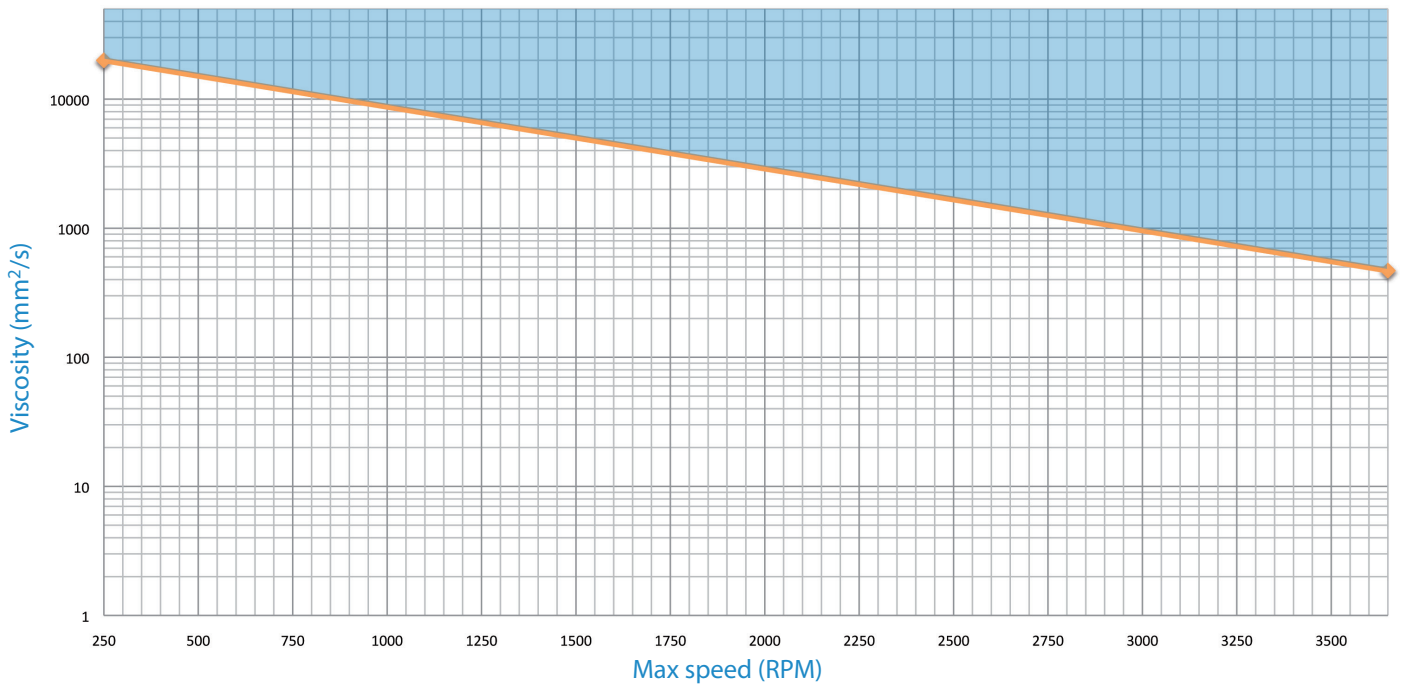
## Performance

In case of deviation of the fluid kinematic viscosity from the value reported in the below graphic (46 mm<sup>2</sup>/s), the flow rate can also deviate but with minimum values.



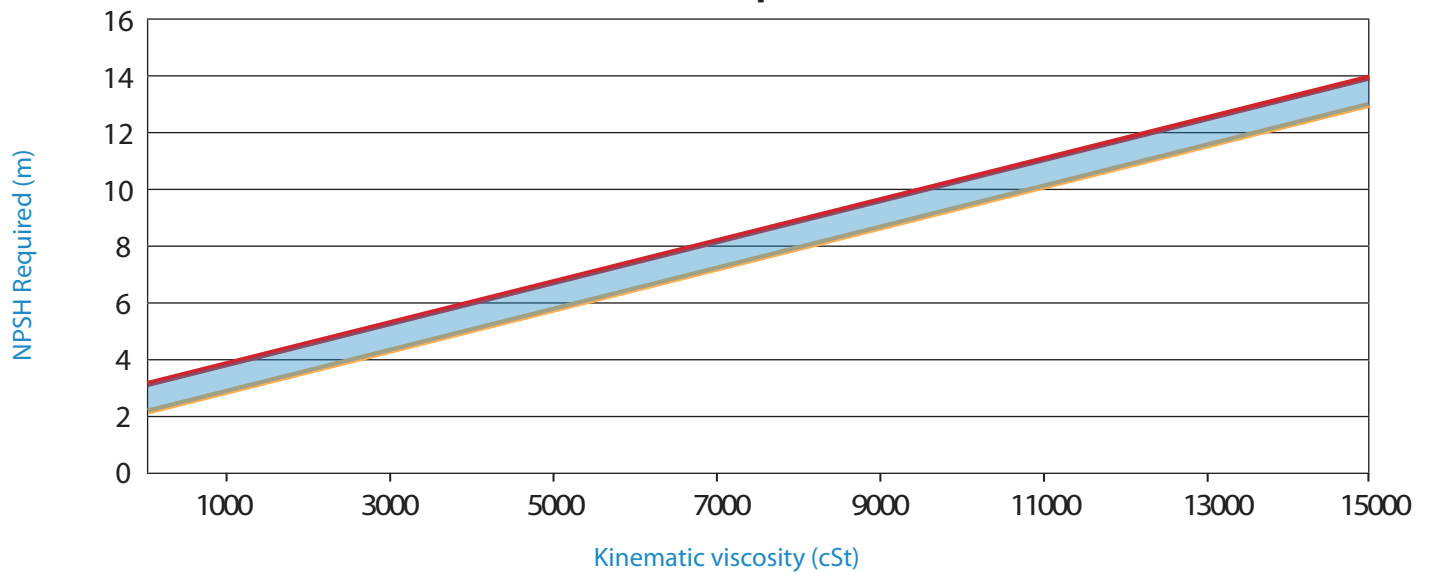
## Speed Range of GR47 - GR55

RPM limit



The graph is referred to the average performances of all 2VHL series. For more information please contact Settima.

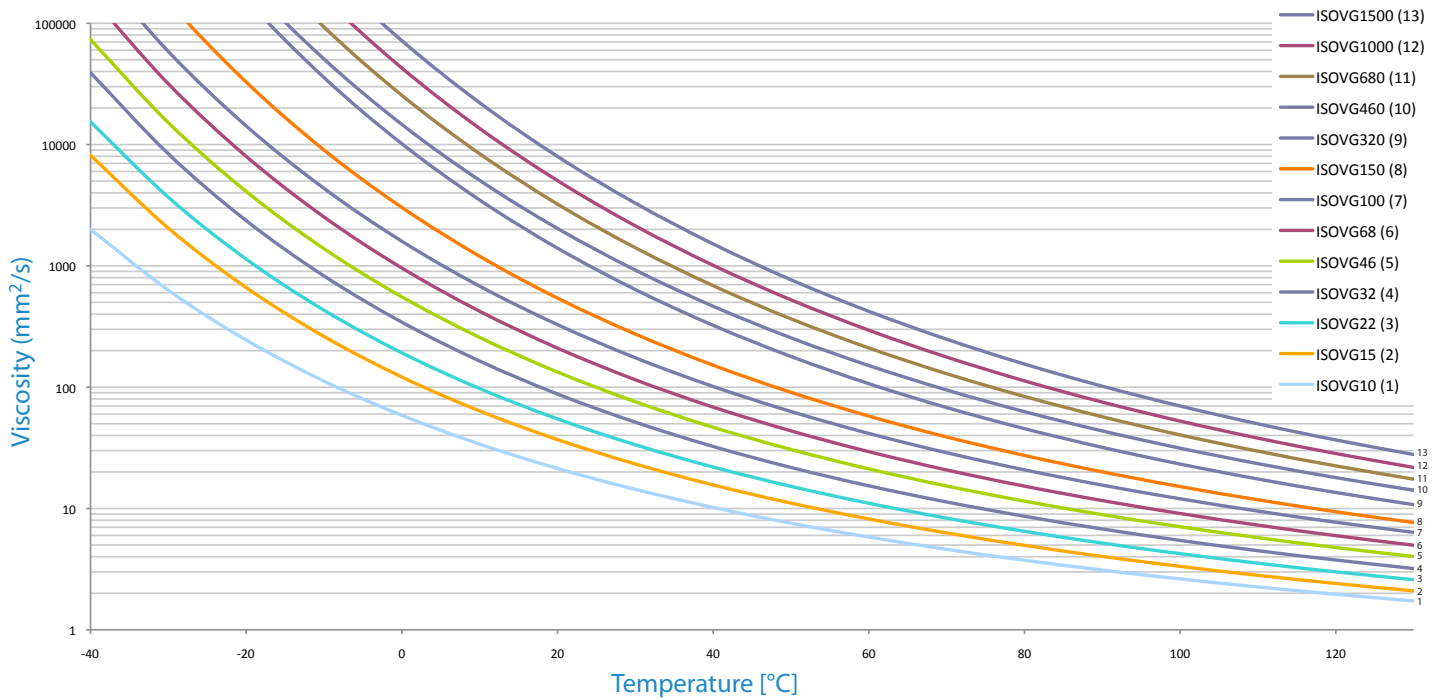
NPSH Required



The graph is referred to the average performances of all 2VHL series. For more information please contact Settima.

# Lubricants

Lubricants (DIN51519)



## Product range - Ordering code of GR47 - GR55

To order Settima 2VHL Continuum® Pump, follow the below tables

Type	Class	Nominal CC	Flange & shaft	Ports	Seals	Rotation	Ext. adjustable safety valve	Corrosion & preservation
GR47	2VHL	28	F80IAC	M	STANDARD NBR --> none	STANDARD DX clockwise	STANDARD none	STANDARD Phosphating --> none
		32						
		40						
		50						
		63						

Type	Class	Nominal CC	Flange & shaft	Ports	Seals	Rotation	Ext. adjustable safety valve	Corrosion & preservation
GR55	2VHL	75	F110EAC	M	STANDARD NBR --> none	STANDARD DX clockwise	STANDARD none	STANDARD Phosphating --> none
		91						
		101						
		125						
		160						

[www.comoso.com](http://www.comoso.com)

**SETTIMA**

**Settima, Italy**

Headquarter, r&d and production

**SETTIMA**

USA  
Warehouse

**SETTIMA**

Shanghai, China  
Warehouse

**Settima Meccanica Srl**

Settima - 29020 Piacenza (Italia)

tel. +39 0523.557623

fax +39 0523.557256

[www.settima.it](http://www.settima.it)

[info@settima.it](mailto:info@settima.it)

**Settima Flow Mechanisms**

Settima - 29020 Piacenza (Italia)

tel. +39 0523.557623

fax +39 0523.557256

[www.settima.it](http://www.settima.it)

[info@settimafm.com](mailto:info@settimafm.com)

 **SETTIMA MECCANICA**

Area Agency/Reseller

**SETTIMA**   
*flow mechanisms*