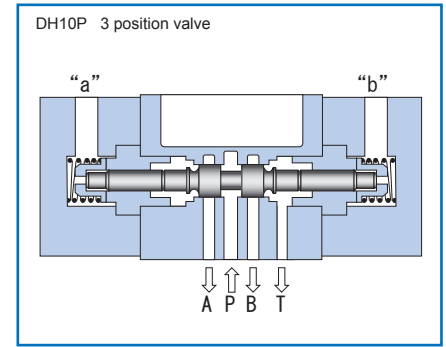
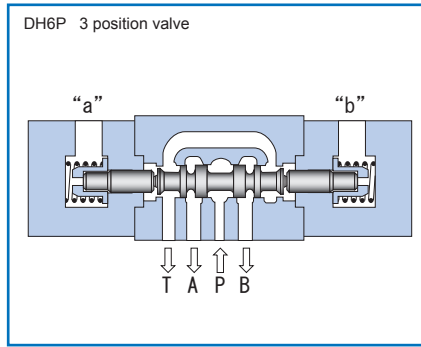
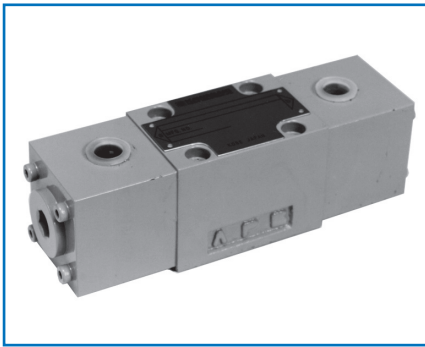


Pilot operated directional valve (1)

DH6/10



Overview

This pilot operated directional valve is used for controlling start and stop, and movement direction of the hydraulic system with pilot oil pressure.

Features

- Switching to high pressure and large flow rate is possible.

www.khadamathydraulic.com
 Tell: 021-55882749
 Tell: 021-33488178
 Fax: 021-33488105

Type indication

DH 6 P - 10 - 2 05 - 6 P08 -

Pilot operated directional valve

Nominal dimension
6, 10

Connection method
P = Gasket connection type

Series number: 10

Position holding method
2 = 2 position, spring offset type
3 = 3 position, spring center type

Spool type
* Refer to "Spool type symbols".

Type of hydraulic oil
No symbol = Mineral based hydraulic oil
V = Phosphate ester based hydraulic oil
W = Fatty ester based hydraulic oil
Water-glycol based hydraulic oil

Presence/absence of P port restriction
No symbol = No restriction
P08 = Restriction contraction diameter ϕ 0.8mm
P10 = Restriction contraction diameter ϕ 1.0mm
P12 = Restriction contraction diameter ϕ 1.2mm
P15 = Restriction contraction diameter ϕ 1.5mm
P20 = Restriction contraction diameter ϕ 2.0mm
P25 = Restriction contraction diameter ϕ 2.5mm
P30 = Restriction contraction diameter ϕ 3.0mm
P40 = Restriction contraction diameter ϕ 4.0mm

Pilot pressure symbol
6 = 0.59MPa (6kgf/cm²)

Drain system
No symbol = External drain
T = Internal drain (2 position only)

Specifications

Nominal dimension		6	10
Maximum working pressure MPa (kgf/cm ²)	Port P, A, B	30.9 (315)	
	Port T	0.4 (4)	
Highest pilot pressure	MPa (kgf/cm ²)	24.5 (250) (Note 1)	13.7 (140) (Note 2)
Lowest pilot pressure	MPa (kgf/cm ²)	Pilot pressure + T port pressure	
Mass	kg	1.8	7.0

(Note 1) DH6P: The highest pressure should be 5.9 MPa (60 kgf/cm²) with spool type 07, 18, and 20.

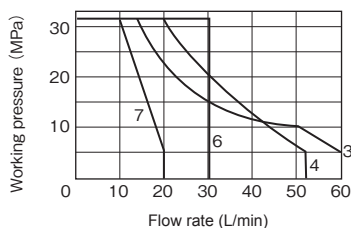
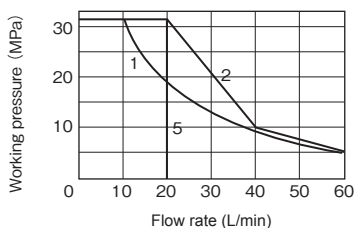
(Note 2) DH10P: The highest pressure should be 5.9 MPa (60 kgf/cm²) with spool type 06, 07, 16, 18, and 20. In case of spool type 01 and 02, port T should be used as drain port.

Spool type symbol

Valve type		Hydraulic symbols	Transient state
Spool type			
2 position valve			
	01		
	03		
	04		
2 position valve	02		
	25		
3 position valve			
	05		
	06		
	07		
	08		
	10		
	12		
	13		
	16		
	17		
	18		
	20		
	21		
	22		
23			

Maximum flow rate (Maximum flow rate may show different values depending on pilot pressure and port T pressure.)

DH6 When DH6 pilot pressure is 2.0 MPa (20 kgf/cm²)



Curve number	Spool type
1	01, 02
2	03, 04, 25
3	05, 10, 12, 13, 17, 21, 22, 23
4	06, 16
5	20
6	07, 08
7	18

DH10 When DH6 pilot pressure is 2.0 MPa (20 kgf/cm²)

	Spool type	Working pressure MPa (kgf/cm ²)				
		4.9(50)	9.8(100)	19.6(200)	24.5(250)	30.9(315)
Flow rate of each spool (L/min)	05	80	80	75	60	60
	03, 08, 10, 12, 13, 17, 21, 22, 23	80	80	75	50	45
	04, 06, 07, 16, 18, 20, 25	75	70	60	50	45
	01, 02	50	45	35	30	25

Pressure drop characteristics

- Similar to those of solenoid operated directional valve (DE6, DE10)
Refer to the section of the type number index "DE6" and "DE10".

Sub-plate

Valve type	Sub-plate type	Connection diameter	Mass
DH6P	P-DE6R14-0	Rc 1/4	1.0kg
	P-DE6G14-0	G 1/4	
	P-DE6R38-0	Rc 3/8	1.3kg
	P-DE6G38-0	G 3/8	
DH10P	P-DE10R38-0	Rc 3/8	2.7kg
	P-DE10G38-0	G 3/8	
	P-DE10R12-0	Rc 1/2	
	P-DE10G12-0	G 1/2	

When you use a sub-plate, please place an order for the above sub-plate type.
For the dimension drawing, refer to pages 9 and 11 of the appendix.

Accessories

Mounting bolt

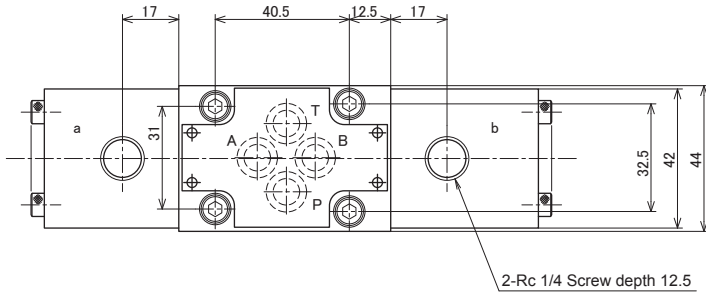
Type	Hexagon socket head cap thread	Quantity	Tightening torque N·m (kgf·cm)
DH6	M5×50L	4 pcs.	6.9±1.0 (70±10.5)
DH10	M6×50L	4 pcs.	11.8±1.7 (120±18)

Pilot port

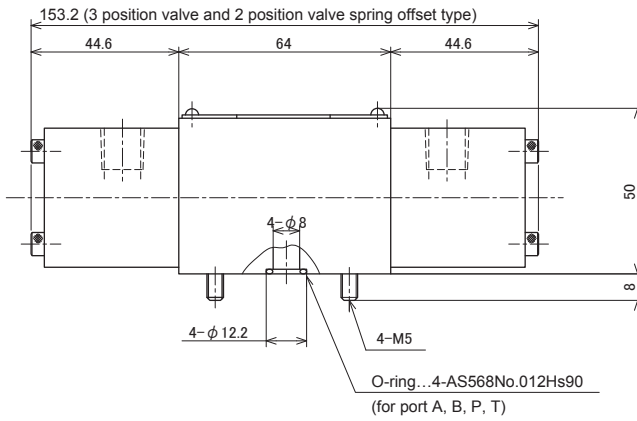
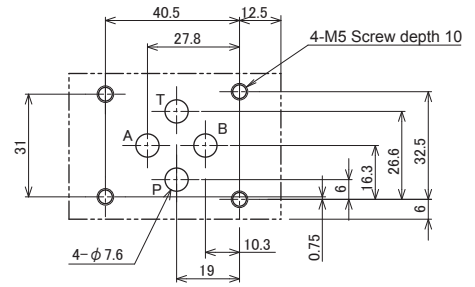
A valve in which the pilot is a G thread (JISB2351 O-ring seal type) is available.
Besides, a valve in which a pilot port is provided on the gasket surface is prepared.
Please contact us for the details.

Dimension drawing

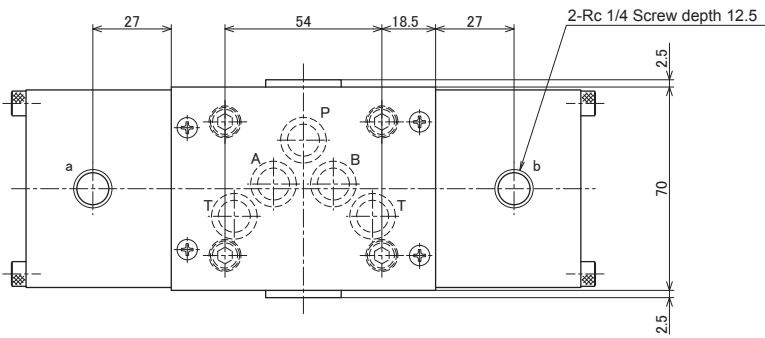
●DH6



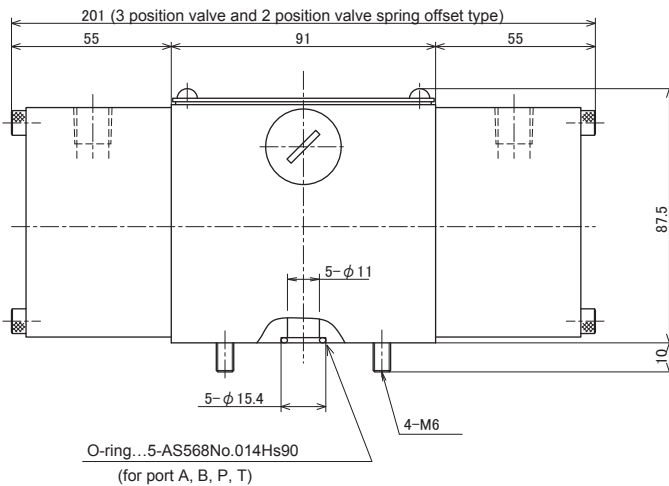
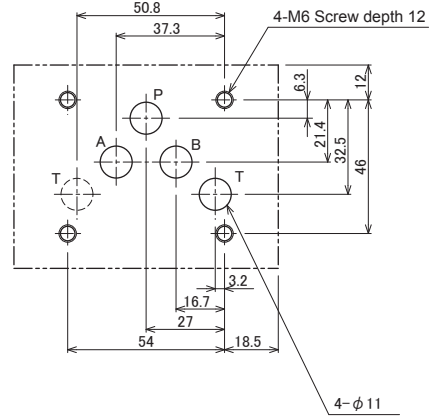
Machining dimension of manifold



●DH10



Machining dimension of manifold



There is T port at two locations and either of the two may be used.