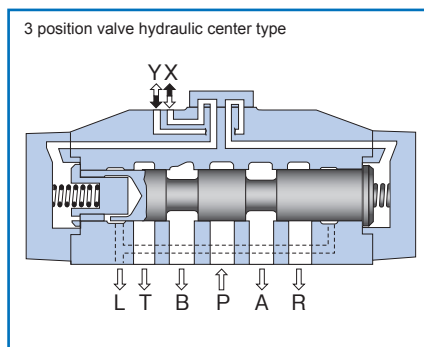


Pilot operated directional valve (3)

DH52

www.khadamathydraulic.com
 Tell: 021-55882749
 Tell: 021-33488178
 Fax: 021-33488105



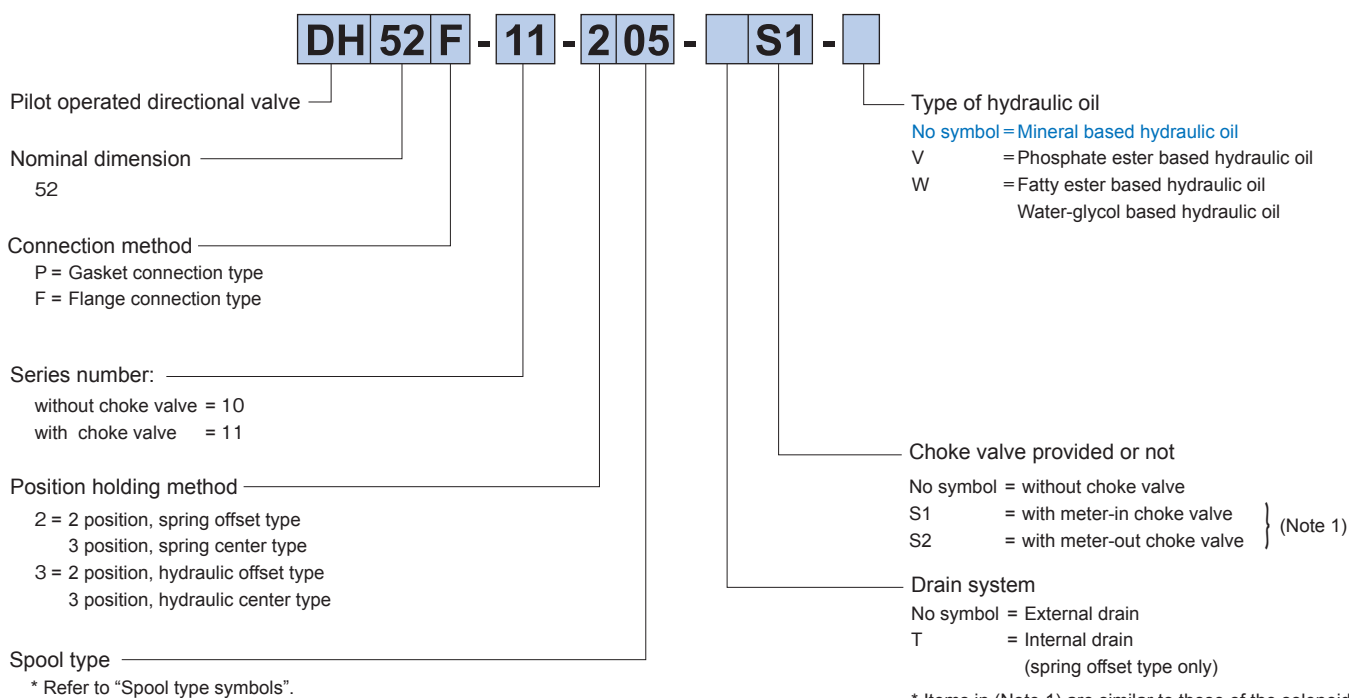
Overview

This pilot operated directional valve is used for controlling start and stop, and movement direction of the hydraulic system with pilot oil pressure.

Features

1. The improvement of internal coring shape and spool shape of the casing has substantially reduced the flow resistance.
2. For return to neutral of the main valve, the spring center type and pressure-centred type are prepared as standard items.
3. The maximum working pressure is 34.3 MPa (350 kgf/cm²).

Type indication



* Items in (Note 1) are similar to those of the solenoid controlled pilot operated directional valve (DEH52). Refer to the section of the solenoid controlled pilot operated directional valve (2).

Specifications

Nominal dimension		52
Maximum working pressure MPa (kgf/cm ²)	Port A, B, P, T, R	34.3 (350)
	Port X, Y	24.5 (250)
Highest pilot pressure	MPa (kgf/cm ²) (Note)	24.5 (250)
Highest pilot pressure MPa (kgf/cm ²)	3 position valve spring center type	1.2 (12)
	3 position valve hydraulic center type	1.5 (15)
	2 position valve spring offset type	1.2 (12)
	2 position valve hydraulic offset type	0.6 (6)
Stroke volume of pilot part cm ³	3 position valve hydraulic center type	33
	Valves other than the above	66.5
Mass kg	Gasket connection type	80
	Flange connection type	70

(Note 3) In the case of 3 position valve hydraulic center type with meter-out choke valve, the highest pilot pressure is 12.3 MPa (125 kgf/cm²).

Maximum flow rate/Pressure drop characteristics

- Similar to those of solenoid controlled pilot operated directional valve (2) (DEH52). Refer to the section of the type number index “DEH52”.

Flange

Valve type	Flange type	Connection diameter	Mass
DH52	TFAA-40	2B	2.6kg
	TFXA-40	2B	2.7kg

When you use a flange, please place an order for the above flange type.

For the dimension drawing, refer to page 16 of the appendix.

Accessories

● Mounting bolt

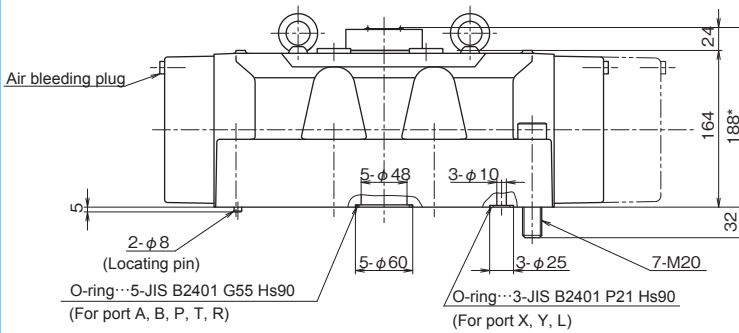
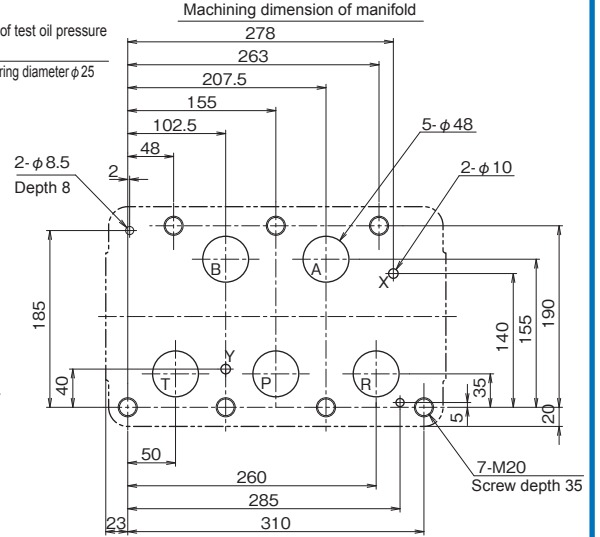
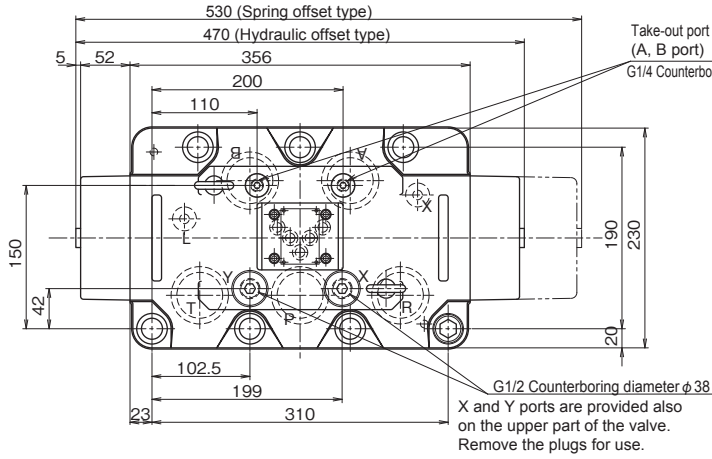
Type	Hexagon socket head cap thread	Quantity	Tightening torque N·m (kgf·cm)
DEH52 Gasket connection type	M20 × 100L	7 pcs.	431.2 ± 64.6 (4400 ± 660)

Spool type symbol

Valve type		Gasket connection type		Gasket connection type	
Spool type		Hydraulic symbols	Transient state	Hydraulic symbols	Transient state
2 position valve	Spring offset type				
	03				
	04				
	11				
26					
3 position valve	Spring center type				
	05				
	06				
	07				
	08				
	10				
	12				
	13				
	17				
	18				
	19				
	20				
	21				
22					
23					

Dimension drawing

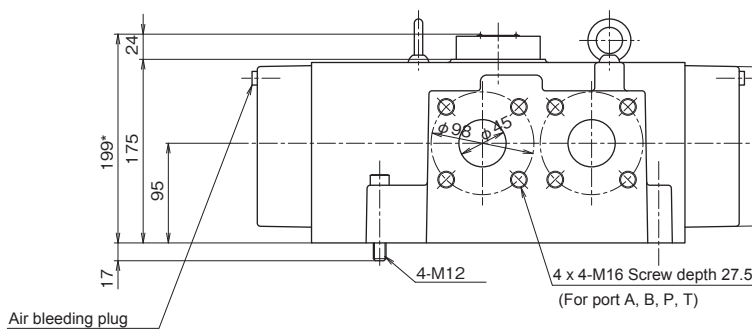
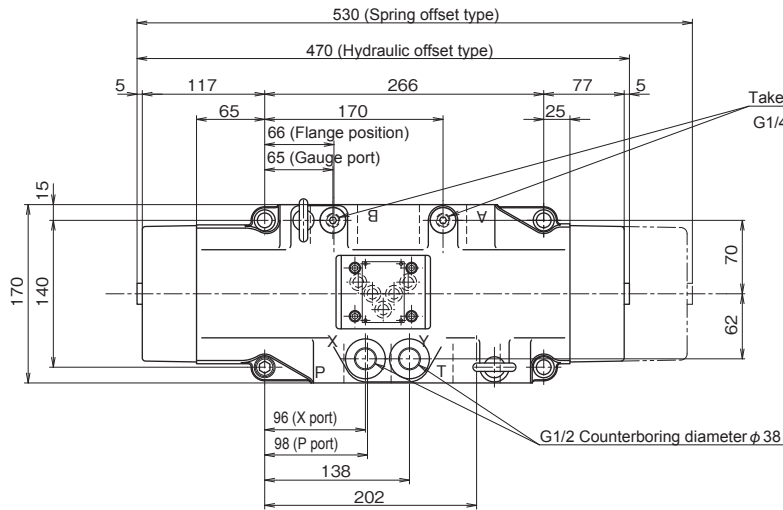
●DH52 (2 position valve - gasket connection type)



The dimension marked with * differs depending on the type.
With choke valve (S1, S2): +55mm

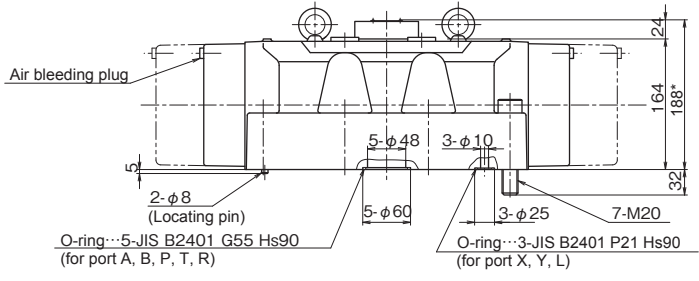
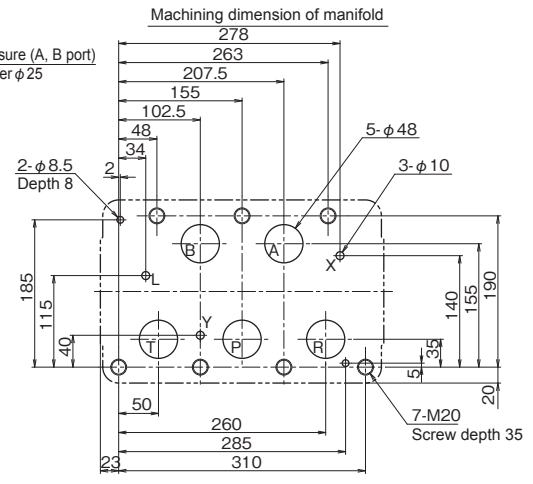
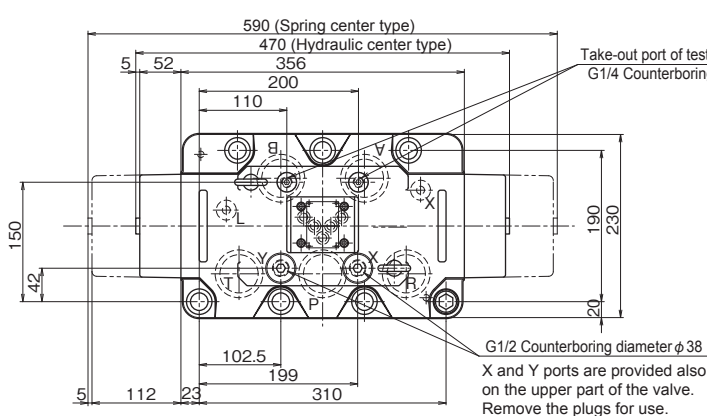
Note)
1. Block L port with a sub-plate.

●DH52 (2 position valve - flange connection type)



The dimension marked with * differs depending on the type.
With choke valve (S1, S2): +55mm

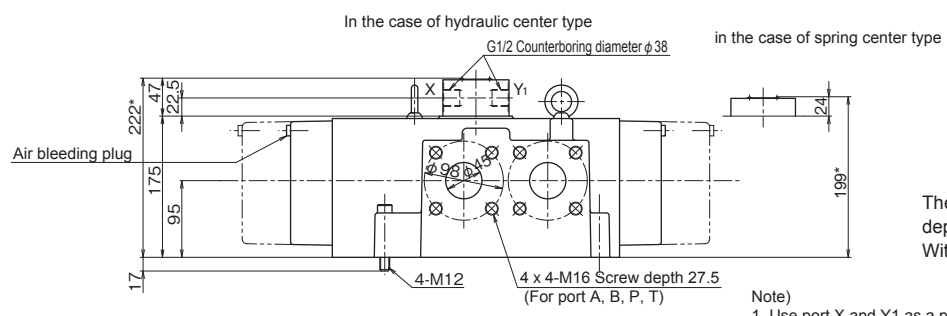
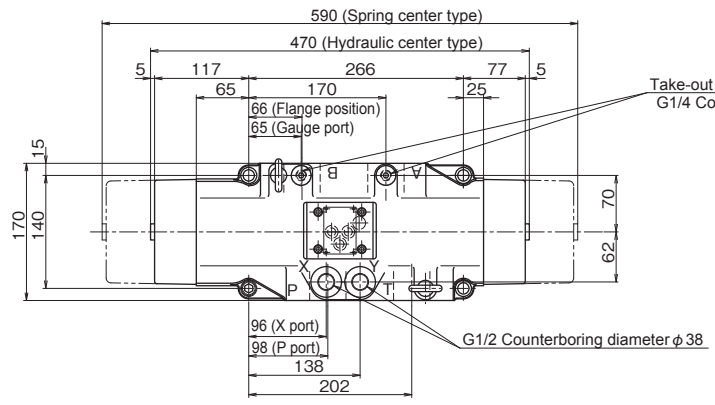
●DH52 (3 position valve - gasket connection type)



The dimension marked with * differs depending on the type.
With choke valve (S1, S2): +55mm

- Note)
1. Port L is not used in the case of the spring center type.
 2. Use port L with tank pressure in the case of the hydraulic center type.

●DH52 (3 position valve - flange connection type)



The dimension marked with * differs depending on the type.
With choke valve (S1, S2): +55mm

- Note)
1. Use port X and Y1 as a pilot port in the case of the hydraulic center type.
Use port Y with tank pressure.