

**www.khadamathydraulic.com**  
**Tell: 021-55882749**  
**Tell: 021-33488178**  
**Fax: 021-33488105**

## Overview

This manual selector valve is used for controlling start and stop, and movement direction of the hydraulic system with handle operation.

## Type indication

**DM 6 P - 10 - 105 / P08 -**  

<p>Manual selector valve</p> <p>Nominal dimension 6, 10</p> <p>Connection method P = Gasket connection type</p> <p>Series number: 10</p> <p>Position holding method 1 = No spring type, detent type 2 = Spring offset type Spring center type</p>	<p>Type of hydraulic oil                      No symbol = Mineral based hydraulic oil                      V = Phosphate ester based hydraulic oil                      W = Fatty ester based hydraulic oil                      Water-glycol based hydraulic oil</p> <p>Presence/absence of P port restriction                      No symbol = No restriction                      P08 = Restriction contraction diameter <math>\phi</math>0.8mm                      P10 = Restriction contraction diameter <math>\phi</math>1.0mm                      P12 = Restriction contraction diameter <math>\phi</math>1.2mm</p> <p>Spool type                      * Refer to "Spool type symbols".</p>	
---	--	--

## Specifications

Nominal dimension		6	10
Maximum working pressure (Note 1) MPa (kgf/cm <sup>2</sup> )	Port A, B, P	30.9 (315)	
	Port T	2.9 (30)	14.7 (150)
Operating force during switching N (kgf)		19.6 to 29.4 (2.0 to 3.0)	15.7 to 26.5 (1.6 to 2.7)
Mass kg		1.4	4.0

(Note 1) If working pressure exceeds the highest pressure of port T when the spool type is A or B, use port T as a drain port.

- The opening area at spool neutral position is "spool type 23 = 3%, spool type 17 = 6%" when spool type 10 is assumed to be 100%.

## Sub-plate

Valve type	Sub-plate type	Connection diameter	Mass
DM6P	P-DE6G14-0	G $\frac{1}{4}$	1.0kg
	P-DE6R14-0	Rc $\frac{1}{4}$	
	P-DE6G38-0	G $\frac{3}{8}$	1.3kg
	P-DE6R38-0	Rc $\frac{3}{8}$	
DM10P	P-DE10G38-0	G $\frac{3}{8}$	2.1kg
	P-DE10R38-0	Rc $\frac{3}{8}$	
	P-DE10G12-0	G $\frac{1}{2}$	
	P-DE10R12-0	Rc $\frac{1}{2}$	

When you use a sub-plate, please place an order for the above sub-plate type.  
 For the dimension drawing, refer to pages 9 and 11 of the appendix.

## Accessories

### Mounting bolt

Type	Hexagon socket head cap thread	Quantity	Tightening torque N·m (kgf·cm)
DM6	M5×50L	4 pcs.	6.9± 1.0 ( 70±10)
DM10	M6×50L	4 pcs.	11.8± 1.8 (120±18)

## Spool type symbol

Valve type	Hydraulic symbols	Transient state	Spool type	DM (lever type)	
				6	10
2 position valve					
			01	○	○
			02	—	○
			03	○	○
			04	○	○
			25	—	○
			02	○	—
			25	○	—
	3 position valve				
			05	○	○
			06	○	○
			07	○	○
			08	○	○
			10	○	○
			12	○	○
			13	○	○
			16	○	○
			17	○	○
			18	○	○
			20	○	○
			21	○	○
			22	○	○
			23	○	○

## Maximum flow rate

### DM6

DM6		DM6																													
Spring offset type Spring center type		No spring type with detent																													
<table border="1"> <thead> <tr> <th>Curve number</th> <th>Spool type</th> </tr> </thead> <tbody> <tr> <td>1</td> <td>03, 04, 05, 07, 08, 10, 12, 13, 17, 18, 21, 23, 25</td> </tr> <tr> <td>2</td> <td>01, 02</td> </tr> <tr> <td>3</td> <td>22</td> </tr> <tr> <td>4</td> <td>06, 16</td> </tr> <tr> <td>5</td> <td>20</td> </tr> </tbody> </table>	Curve number	Spool type	1	03, 04, 05, 07, 08, 10, 12, 13, 17, 18, 21, 23, 25	2	01, 02	3	22	4	06, 16	5	20	<table border="1"> <thead> <tr> <th>Curve number</th> <th>Spool type</th> </tr> </thead> <tbody> <tr> <td>1</td> <td>03, 04, 08, 13, 25</td> </tr> <tr> <td>2</td> <td>05, 10, 12, 21, 23</td> </tr> <tr> <td>3</td> <td>01, 02</td> </tr> <tr> <td>4</td> <td>07, 20</td> </tr> <tr> <td>5</td> <td>06</td> </tr> <tr> <td>4</td> <td>22</td> </tr> <tr> <td>5</td> <td>16</td> </tr> </tbody> </table>	Curve number	Spool type	1	03, 04, 08, 13, 25	2	05, 10, 12, 21, 23	3	01, 02	4	07, 20	5	06	4	22	5	16		
Curve number	Spool type																														
1	03, 04, 05, 07, 08, 10, 12, 13, 17, 18, 21, 23, 25																														
2	01, 02																														
3	22																														
4	06, 16																														
5	20																														
Curve number	Spool type																														
1	03, 04, 08, 13, 25																														
2	05, 10, 12, 21, 23																														
3	01, 02																														
4	07, 20																														
5	06																														
4	22																														
5	16																														

### DM10

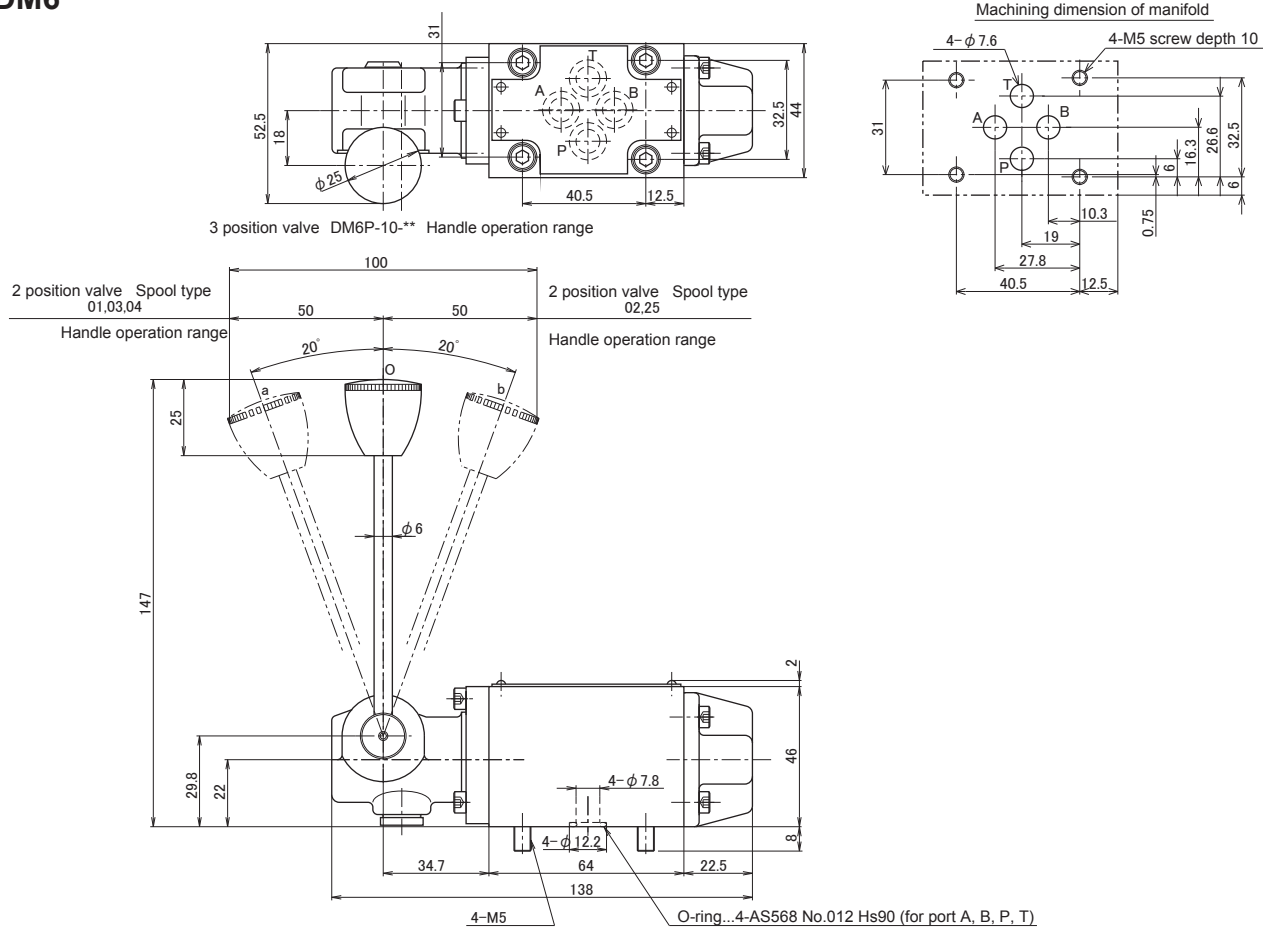
	Spool type	Working pressure MPa (kgf/cm <sup>2</sup> )				
		4.9 (50)	9.8 (100)	19.6 (200)	24.5 (250)	30.9 (315)
Flow rate (L/min)	05	80	80	75	60	60
	03, 08, 10, 12, 13, 21, 22, 23	80	80	75	50	45
	04, 06, 07, 16, 18, 20, 25	75	70	60	50	45
	01, 02	50	45	35	30	25

## Pressure drop characteristics

- Similar to those of solenoid operated directional valve (DE6, DE10). Refer to the section of the type number index "DE6" and "DE10".

## Dimension drawing

### DM6



### DM10

