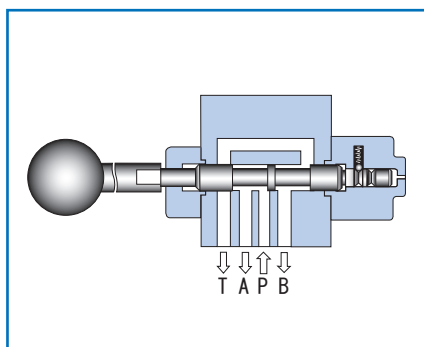
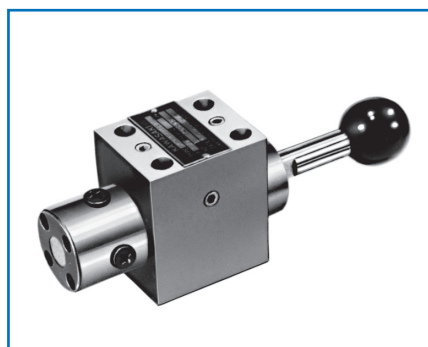
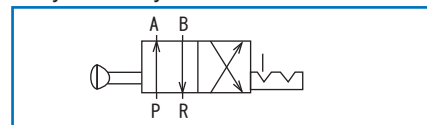


# Manual selector valve – K4LA type

# K4LA



### Hydraulic symbols



[www.khadamathydraulic.com](http://www.khadamathydraulic.com)  
 Tell: 021-55882749  
 Tell: 021-33488178  
 Fax: 021-33488105

## Overview

This manual selector valve is used for controlling start and stop, and movement direction of the hydraulic system with handle operation.

## Specifications

Nominal dimension		6
Maximum working pressure MPa (kgf/cm <sup>2</sup> )	Port A, B, P	24.5 (250)
	Port R	2.9 (30)
Maximum flow rate L/min		20
Mass kg		1.9

## Type indication

**K4LAR 6 EP - 2C - 10 -** [ ]

Manual selector valve with 4 port detent

Nominal dimension: 6

Connection method  
EP = Gasket connection type

Type of hydraulic oil  
 Mineral based hydraulic oil  
 No symbol = Mineral based hydraulic oil  
 V = Phosphate ester based hydraulic oil  
 W = Fatty ester based hydraulic oil  
 Water-glycol based hydraulic oil

Series number: 10

Spool type: 2C

## Sub-plate

Valve type	Sub-plate type	Connection diameter	Mass
K4LA	P-DE6R14-0	Rc 1/4	1.0kg
	P-DE6G14-0	G 1/4	
	P-DE6R38-0	Rc 3/8	2.2kg
	P-DE6G38-0	G 3/8	

When you use a sub-plate, please place an order for the above sub-plate type.

For the dimension drawing, refer to page 11 of the appendix.

## Accessories

### Mounting bolt

Type	Hexagon socket head cap thread	Quantity	Tightening torque N·m (kgf·cm)
K4LAR6EP	M5 × 75L	4 pcs.	6.9 ± 1.0 (70 ± 10.5)

## Dimension drawing

### K4LAR6

Switching position	When pressed in	When pulled out
L	2mm	8mm

