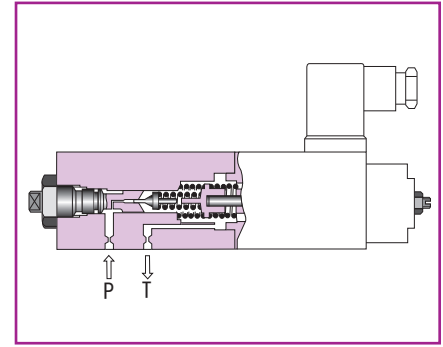
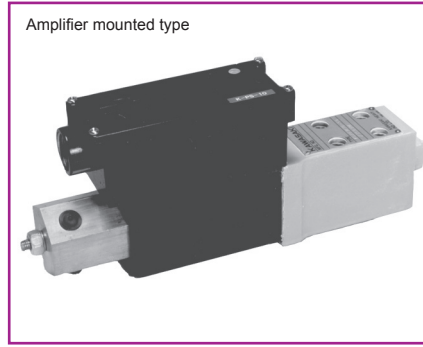
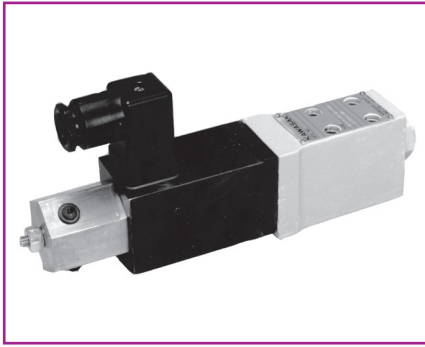


Solenoid proportional direct operated type relief valve – for vent control **RDPV**



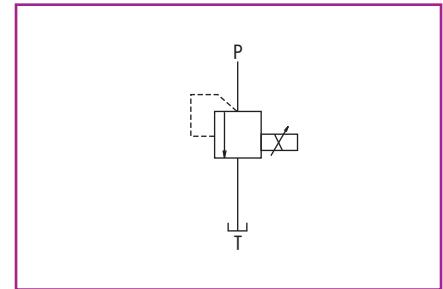
Overview

The solenoid proportional direct operated type relief valve consists of DC proportional solenoid and poppet type direct operated relief valve, and allows hydraulic pressure to be remotely controlled at a given rate in proportion to the input current by connecting it to the vent line of the pilot operation type pressure control valve (relief valve or pressure reducing valve). In addition, amplifier mounted types are controlled by voltage input.

Features

1. Special damping mechanism with a spring realises superior stability even at high pressure of 34.3 MPa (350 kgf/cm²).
2. During the initial adjustment or malfunction in the electrical system, manual operation can be done with the manual pressure adjustment thread.
3. The structure is simple and maintenance is easy.
4. Easy handling amplifier mounted type is also lined up.

Hydraulic symbols



www.khadamathydraulic.com
 Tell: 021-55882749
 Tell: 021-33488178
 Fax: 021-33488105

Type indication

RDPV5P-10/350-EC- []

Solenoid proportional direct operated type relief valve (For vent control)

Nominal dimension
5

Connection method
P = Gasket connection type

Series number: 10

Highest adjustment pressure

- 50 = 4.9MPa (50kgf/cm²)
- 100 = 9.8MPa (100kgf/cm²)
- 150 = 14.7MPa (150kgf/cm²)
- 250 = 24.5MPa (250kgf/cm²)
- 315 = 30.9MPa (315kgf/cm²)
- 350 = 34.3MPa (350kgf/cm²)

Type of hydraulic oil

- No symbol = Mineral based hydraulic oil
- V = Phosphate ester based hydraulic oil
- W = Fatty ester based hydraulic oil
- Water-glycol based hydraulic oil

Electric connection symbol

- B = DIN connector
- C = DIN large connector
- E = Amplifier mounted type

Solenoid ratings

E = 14.2Ω × 0.8A

Sub-plate

Valve type	Sub-plate type	Connection diameter	Mass
RDPV5	P-RDPV5R14-0	Rc 1/4	2kg
	P-RDPV5G14-0	G 1/4	

When you use a sub-plate, please place an order for the above sub-plate type.

Accessories

Mounting bolt

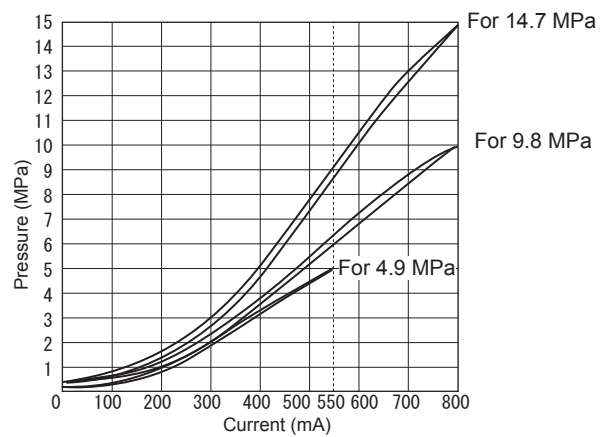
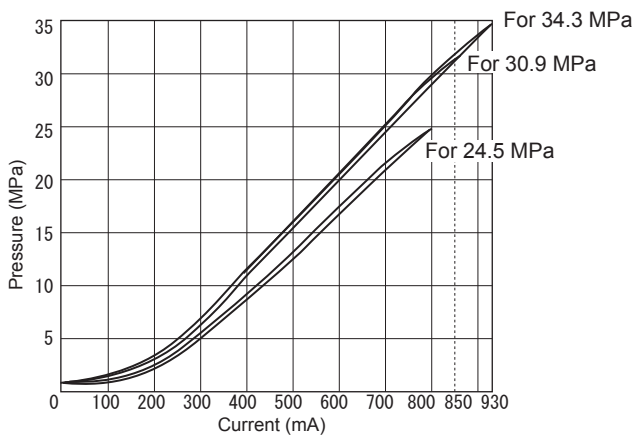
Type	Hexagon socket head cap thread	Quantity	Tightening torque N · m (kgf · cm)
RDPV5	M5 × 55L	4 pcs.	6.9 ± 1.0 (70 ± 10.5)

Specifications

Nominal dimension		5	
Maximum working pressure MPa (kgf/cm ²)	Port P	34.3 (350)	
	Port T	1.0 (10)	
Maximum flow rate L/min		3	
Reproducibility %		2 or less	
Hysteresis %		3 or less	
Electrical specifications	Solenoid rated current mA	See the Current - Pressure Characteristics (the following figure).	
	Coil resistance Ω	14.2 at 20°C	
	Dither (Recommendable value)	200HzPWM/200Hz, 200mAP-P	
	In case the amplifier is installed separately	Standard amplifier type	KC-B10/C-B10-A ¹⁰⁰ / ₂₀₀
	In case of amplifier mounted type	Power source	DC24V
Command voltage		0 to 5V	
Mass kg	RDPV5P-10/*-E ^B / _C	2.7	
	RDPV5P-10/*-EE	3.2	

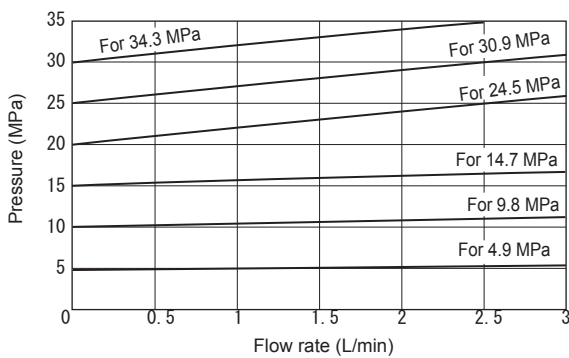
Current - Pressure characteristics (viscosity 25 mm²/s (cSt))

●RDPV5



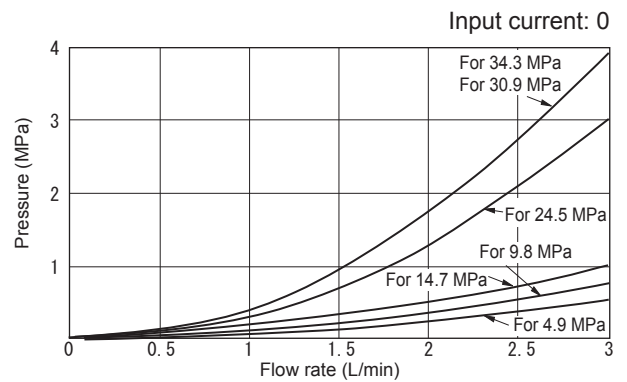
Pressure override characteristics (viscosity 25 mm²/s (cSt))

●RDPV5



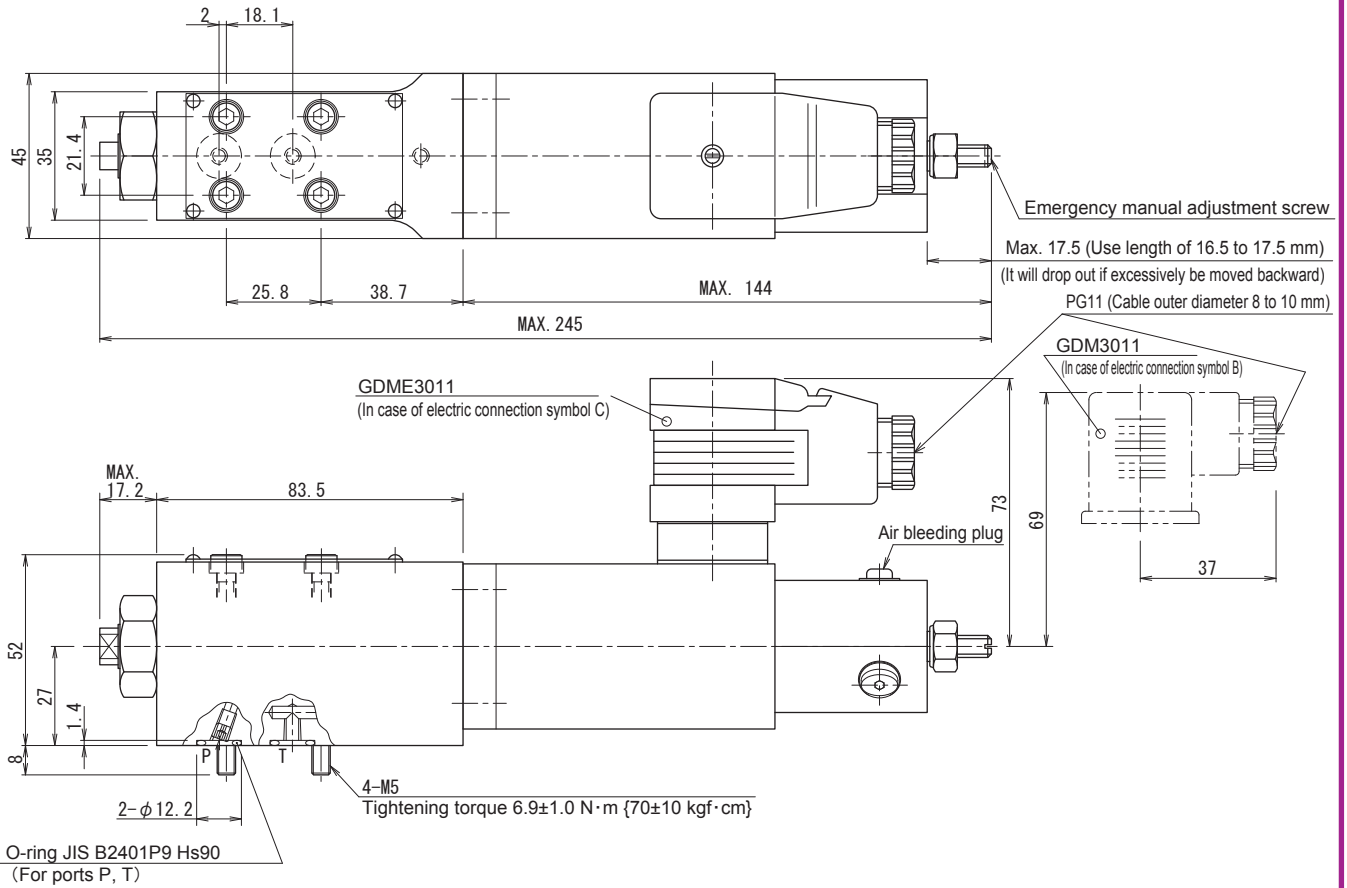
Minimum adjustment pressure characteristics (viscosity 25 mm²/s (cSt))

●RDPV5



Dimension drawing

●RDPV5P-10/*E^B_C



●RDPV5P-10/*EE

