

Overview

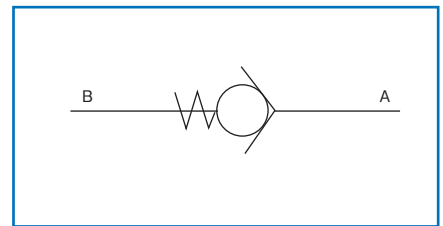
This check valve is used for allowing the flow from one direction to pass freely according to the cracking pressure of the valve and for blocking the flow from the opposite direction.

www.khadamathydraulic.com
 Tell: 021-55882749
 Tell: 021-33488178
 Fax: 021-33488105

Features

1. There are an in-line type that has thread connection system and a right angle type that has gasket connection system.
2. There are six types of cracking pressure with no spring: 0.01, 0.05, 0.15, 0.29 and 0.39 MPa.
3. Cartridge type elements are also manufactured.

Hydraulic symbols



Type indication

● C

C6R - 10 - 05 - []

Check valve _____

Nominal dimension _____
 6, 8, 10, 15, 20, 25, 30
 (Gasket connection type is 10, 20 and 30 only.)

Connection method _____
 G = G thread connection type
 GO = G thread connection type (based on JIS B2351 0 type)
 R = R thread connection type
 P = Gasket connection type
 C = Cartridge type (for in-line)

Series number: 10 _____

Type of hydraulic oil _____
 (Specify only in the case of gasket connection type.)
 No symbol = Mineral based hydraulic oil
 V = Phosphate ester based hydraulic oil
 W = Fatty ester based hydraulic oil
 Water-glycol based hydraulic oil
 (Note) It is not necessary to enter the type of hydraulic oil when the connection method is other than "P".

Cracking pressure _____
 00 = No spring
 (There is no no-spring type in the case of cartridge type.)
 01=0.01MPa(0.1kgf/cm²)
 05=0.05MPa(0.5kgf/cm²)
 15=0.15MPa(1.5kgf/cm²)
 30=0.29MPa(3.0kgf/cm²)
 40=0.39MPa(4.0kgf/cm²)

● C1M

C1M6C - 10 - 05 - []

Cartridge type check valve for angle _____

Nominal dimension _____
 6, 8, 10, 15, 20, 25, 30

Connection method _____
 C = Cartridge type

Series number: 10 _____

Type of hydraulic oil _____
 No symbol = Mineral based hydraulic oil
 Phosphate ester based hydraulic oil
 Fatty ester based hydraulic oil
 Water-glycol based hydraulic oil

Cracking pressure _____
 01=0.01MPa(0.1kgf/cm²)
 05=0.05MPa(0.5kgf/cm²)
 15=0.15MPa(1.5kgf/cm²)
 30=0.29MPa(3.0kgf/cm²)
 40=0.39MPa(4.0kgf/cm²)

Specifications

Nominal dimension		6	8	10	15	20	25	30
Maximum specification pressure MPa (kgf/cm ²)		30.9 (315)						
Maximum flow rate L/min		15	35	50	120	200	300	400
Mass kg	Thread connection type	0.1	0.2	0.5	0.7	1.2	2.3	2.3
	Gasket connection type	—	—	1.4	—	4	—	12
	Cartridge	0.05	0.05	0.05	0.1	0.2	0.25	0.3

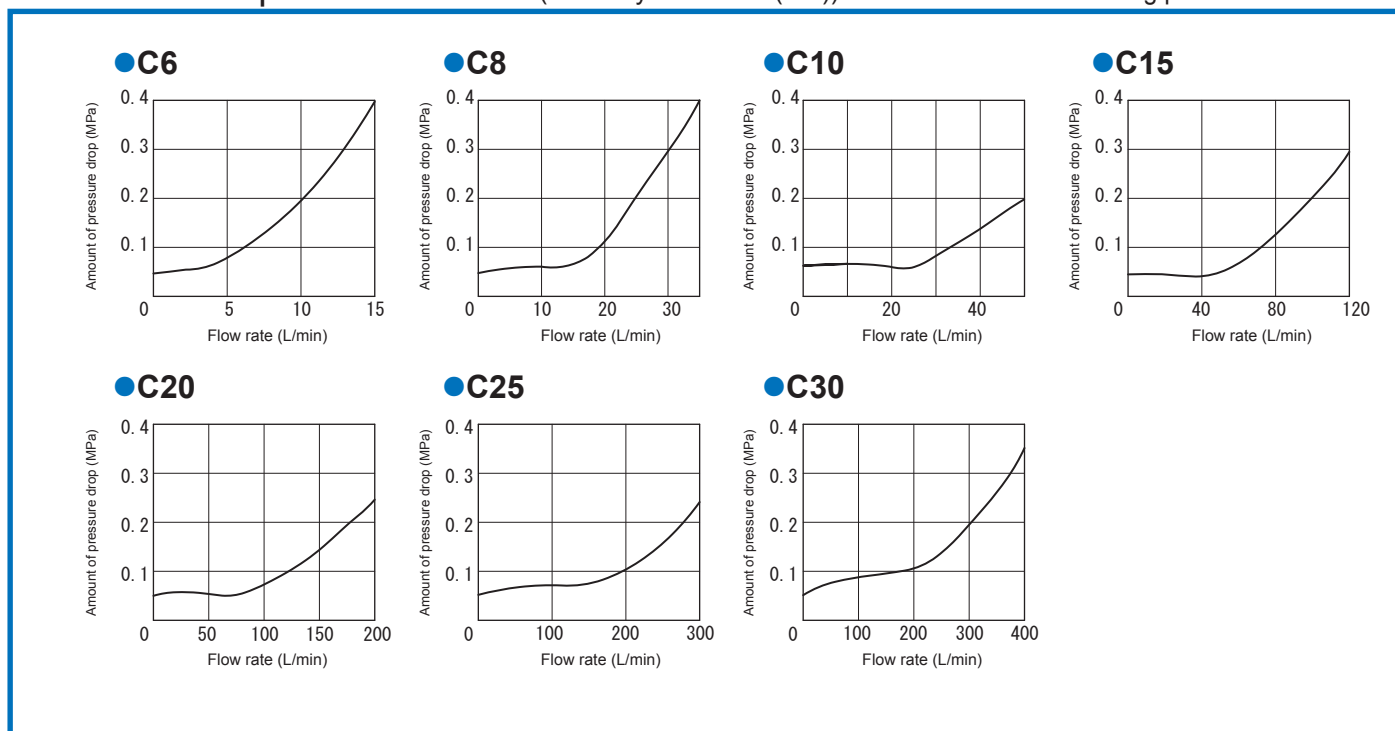
Accessories

Mounting bolt

Type	Hexagon socket head cap thread	Quantity	Tightening torque N·m (kgf·cm)
C10P	M8 × 50L	4 pcs.	29.4 ± 4.4 (300 ± 45.0)
C20P	M10 × 70L	4 pcs.	56.8 ± 8.5 (580 ± 87.0)
C30P	M16 × 90L	4 pcs.	235.2 ± 35.3 (2400 ± 360.0)

Pressure drop characteristics (viscosity 36 mm²/s (cSt))

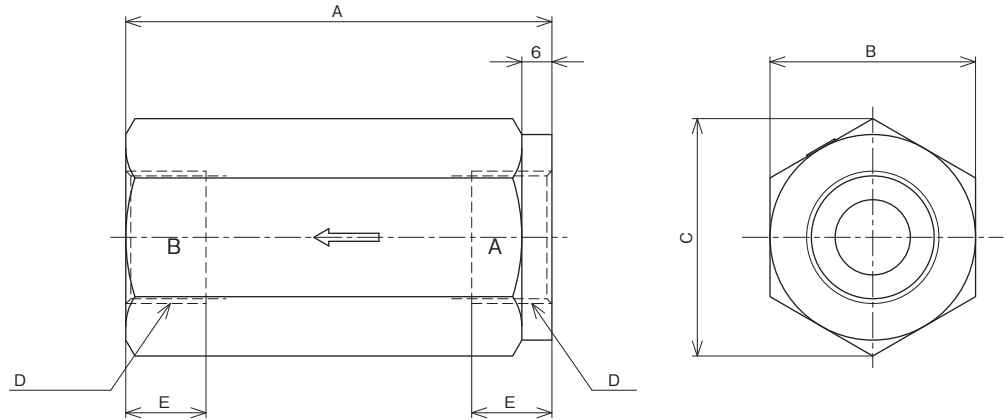
When cracking pressure is 0.05 MPa



Dimension drawing

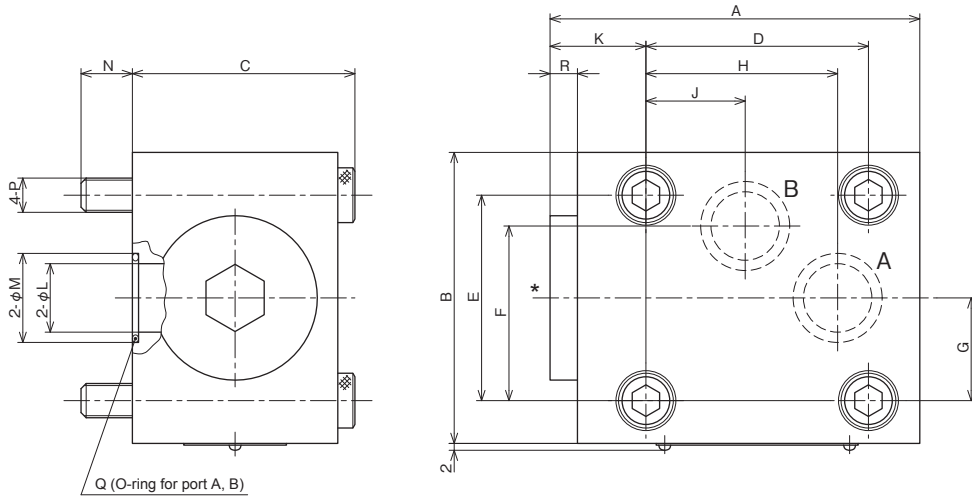
●C (screw connection type)

Nominal dimension		A	B	C	D	E
6	G	58	24	27.7	G $\frac{1}{4}$	12
	R				Rc $\frac{1}{4}$	9
8	G	58	32	37	G $\frac{3}{8}$	12
	R				Rc $\frac{3}{8}$	10
10	G	72	36	41.6	G $\frac{1}{2}$	14
	R				Rc $\frac{1}{2}$	12
15	G	85	41	47.3	G $\frac{3}{4}$	16
	R				Rc $\frac{3}{4}$	14
20	G	98	50	57.7	G 1	18
	R				Rc 1	16
25	G	120	63	72.7	G 1 $\frac{1}{4}$	23
	R				Rc 1 $\frac{1}{4}$	18
30	G	132	63	72.7	G 1 $\frac{1}{2}$	23
	R				Rc 1 $\frac{1}{2}$	18



(Note)
 1. When using the no spring type, be sure to install it so that port B faces upward.
 2. Articles of screw connection type are undisassemblable.

●C (gasket connection type)

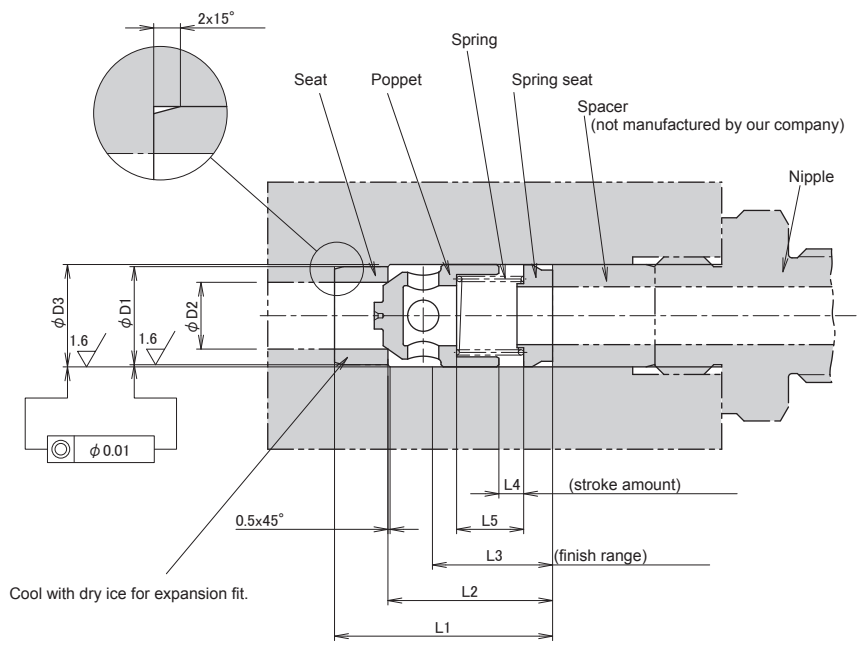


Nominal dimension	A	B	C	D	E	F	G	H	J	K	L	M	N	P	R	"Q" O-ring dimension
10	75	60	46	40	40	32	20	36	18	20	10	16	12	M8	5	2-JIS B 2401 P12 Hs90
20	108	85	65	65	60	51	30	56	29	28	20	26	15	M10	8	2-JIS B 2401 P22 Hs90
30	145	130	83	95	100	83	50	85	45	30	30	40	24	M16	5	2-JIS B 2401 G35 Hs90

(Note) When using the no spring type, be sure to install it so that the surface marked with * faces upward.

●C (cartridge type for in-line)

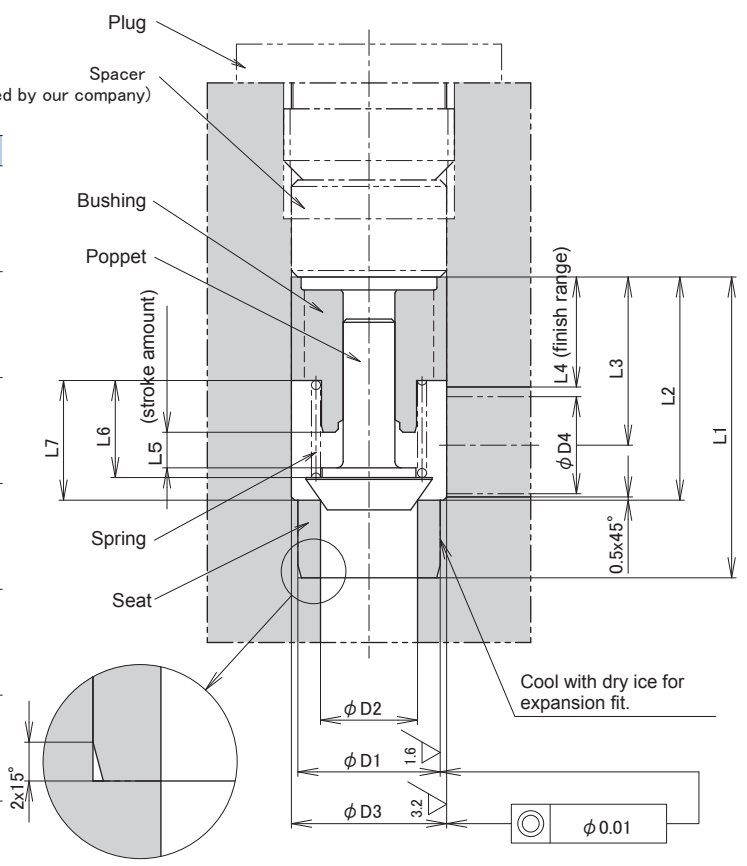
Valve type	L1	L2	L3	L4	L5	D1 H7	D2	D3 H8
C6C-10-	01 05 15 30	29.3	21.3	18	3.5	10	6	10.5
	9							
C8C-10-	01 05 15 30	32.8	22.8	19	4	13	8	14
	9.5							
C10C-10-	01 05 15 30	38.8	28.8	21	4	17	10	17.5
	11.5							
C15C-10-	01 05 15 30	49	37	27	5.5	22	15	23
	15							
C20C-10-	01 05 15 30	59.6	44.6	29	5.5	28	20	29
	16.5							
C25C-10-	01 05 15 30	72.9	54.9	38	7	36	25	37.5
	24.5							
C30C-10-	01 05 15 30	83.6	63.6	42	7.5	42	30	43
	25.5							
	40				5.5			
					25.5			



Cool with dry ice for expansion fit.

●C (cartridge type for angle)

Valve type	L1	L2	L3	L4	L5	L6	L7	D1 H7	D2	D3 H8	D4
C1M6C-10-	01 05 15 30 40	28.1	20.1	16.1	11	3.5	11.3	10	6	11	6
						9					
C1M8C-10-	01 05 15 30 40	36.5	26.5	21.5	16	4	12.4	13	8	14	8
						9.5					
C1M10C-10-	01 05 15 30 40	39.5	29.5	23.5	17	4	14.8	17	10	18	10
						11.5					
C1M15C-10-	01 05 15 30 40	46.5	34.5	26	18	5.5	18.5	22	15	24	15
						15					
C1M20C-10-	01 05 15 30 40	55.9	40.9	30.4	23	5.5	21.3	28	20	30	20
						16.5					
C1M25C-10-	01 05 15 30 40	74.3	56.3	41.8	31	7	30	36	25	38	25
						24.5					
C1M30C-10-	01 05 15 30 40	84.1	64.1	48.1	37	7.5	31.1	42	30	44	30
						25.5					
						5.5					
						25.5					



Cool with dry ice for expansion fit.