
**www.khadamathydraulic.com**  
**Tell: 021-55882749**  
**Tell: 021-33488178**  
**Fax: 021-33488105**

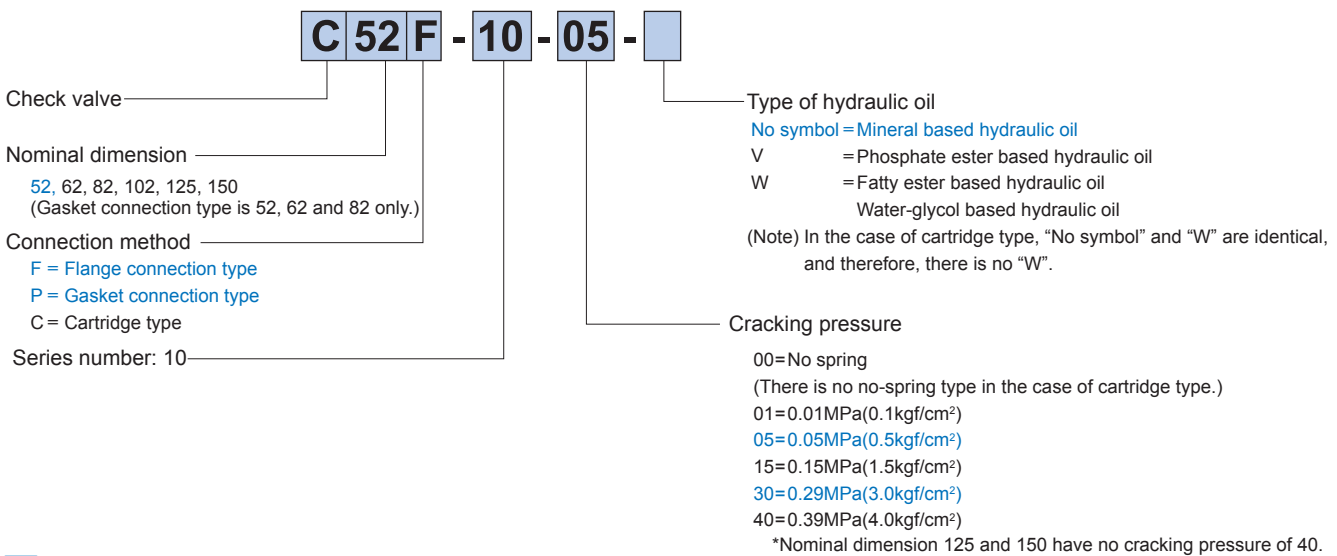
## Overview

This check valve is used for allowing the flow from one direction to pass freely according to the cracking pressure of the valve and for blocking the flow from the opposite direction.

## Features

1. There are an in-line type that has flange connection system and a right angle type that has gasket connection system.
2. There are six types of cracking pressure with no spring: 0.01, 0.05, 0.15, 0.29 and 0.39 MPa.
3. Cartridge type elements are also manufactured.

## Type indication



## Flange

Valve type	Maximum working pressure	Flange type	Connection diameter	Mass
C52F	20.6MPa	TFAA-40	2B	2.6kg
	30.9MPa	TFXA-40	2B	2.7kg
C62F	20.6MPa	TFAA-50	2½ B	3.9kg
	30.9MPa	TFXA-50	2½ B	4.5kg
C82F	20.6MPa	TFAA-63	3B	7.9kg
	30.9MPa	TFXA-63	3B	8.5kg
C102F	20.6MPa	TFAA-80	4B	13 kg
	30.9MPa	TFXA-80	4B	14 kg
C125F	20.6MPa	TFAA-125	6B	42 kg
	30.9MPa	TFXA-125	6B	45 kg
C150F	20.6MPa	TFAA-150	8B	70 kg
	30.9MPa	TFXA-150	8B	75 kg

When you use a flange, please place an order for the above flange type. For the dimension drawing, refer to page 16 of the appendix.

## Accessories

### Specifications

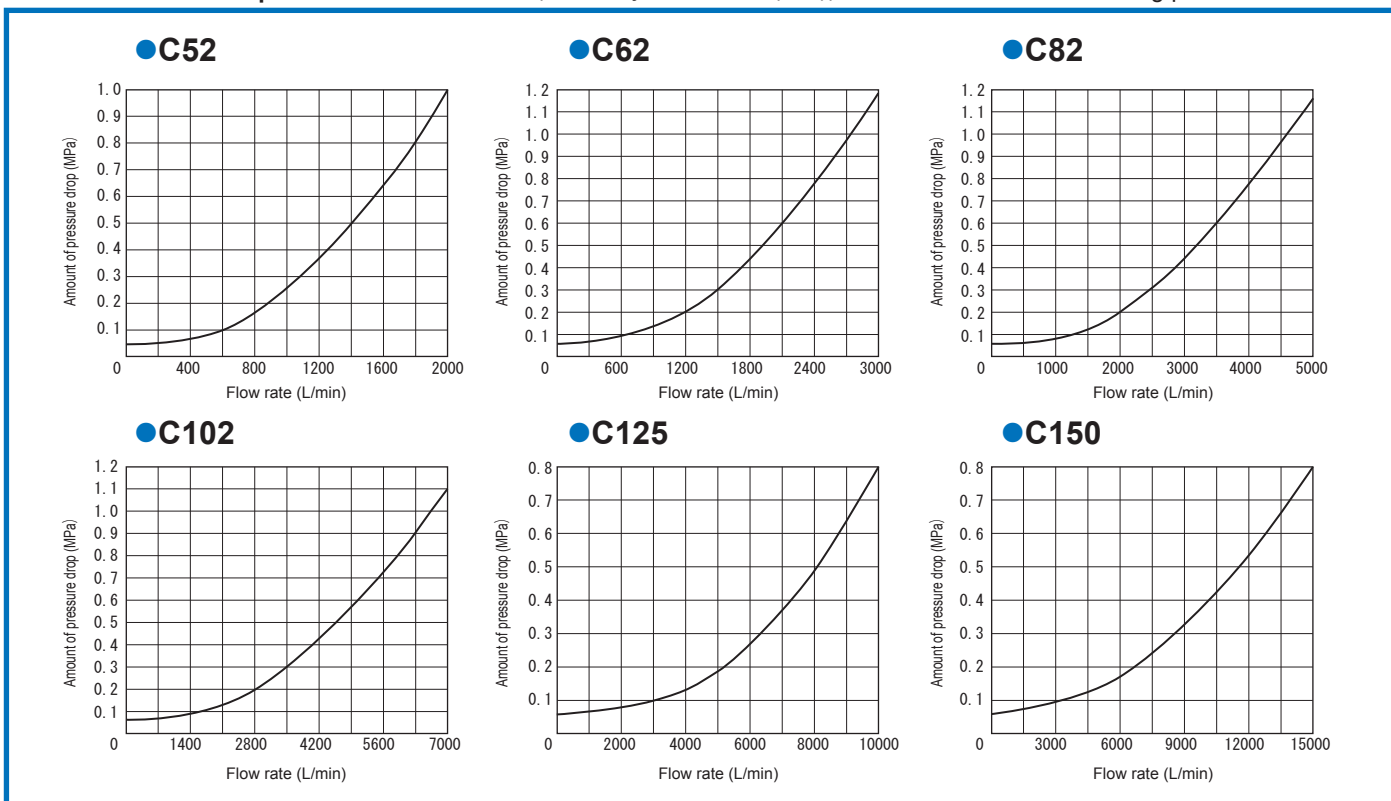
Type	Hexagon socket head cap thread	Quantity	Tightening torque N·m (kgf·cm)
C52P	M16 × 110L	6 pcs.	235.2 ± 35.3 (2400 ± 360.0)
C62P	M20 × 135L	6 pcs.	431.2 ± 64.7 (4400 ± 660.0)
C82P	M20 × 165L	6 pcs.	

### Specifications

Nominal dimension	52	62	82	102	125	150	
Maximum working pressure MPa (kgf/cm <sup>2</sup> )	30.9 (315)						
Maximum flow rate L/min	700	1100	1800	3000	4400	6400	
Mass kg	Flange connection type	10.6	15	27.5	50	190	330
	Gasket connection type	17	31.5	57	—	—	—
	Cartridge type	1.9	3.3	5.6	9.4	36.2	76.1

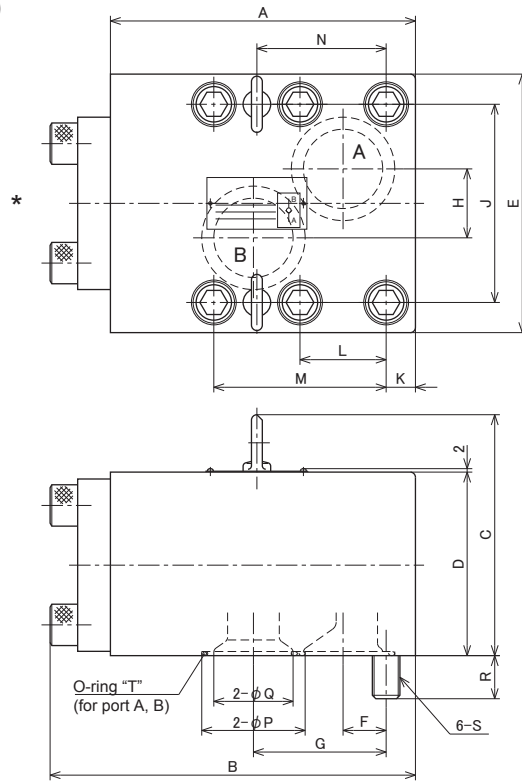
### Pressure drop characteristics (viscosity 36 mm<sup>2</sup>/s (cSt))

When cracking pressure is 0.05 MPa



## Dimension drawing

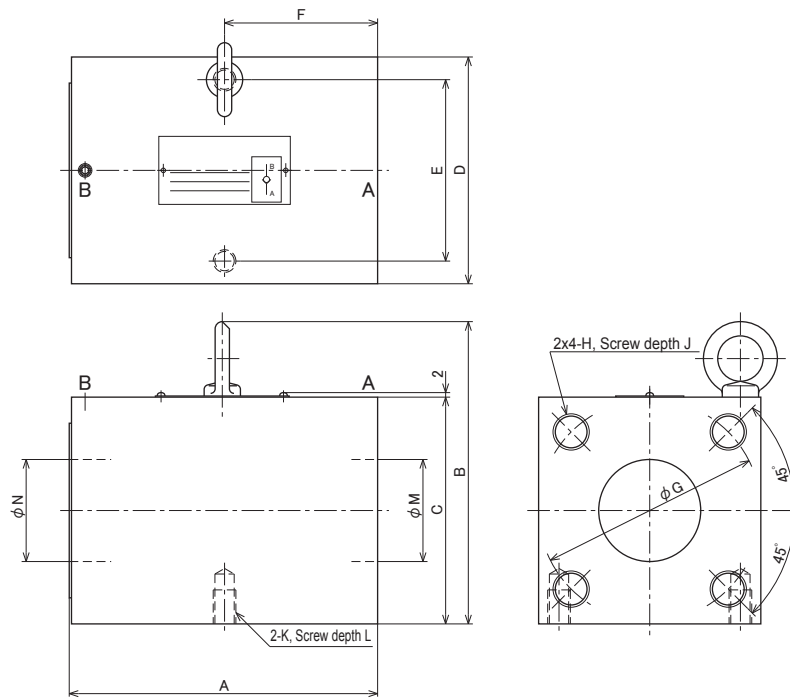
### ●C (gasket connection type)



Nominal dimension	A	B	C	D	E	F	G	H	J	K	L	M	N	P	Q	R	S	O-ring dimension "T"
52	177	212	140.5	106.5	150	25	77	40	115	17	50	100	75	60	50	25	M16	2-JIS B2401 G55 Hs90
62	224	266.5	160.5	126.5	180	34	100	40	140	21.5	65	128	96	70	60	30	M20	2-JIS B2401 G65 Hs90
82	275	325	190.5	156.5	210	30	115	50	170	35	70	140	105	90	80	30	M20	2-JIS B2401 G85 Hs90

Note) When using the no spring type, be sure to install it so that the surface marked with \* faces upward.

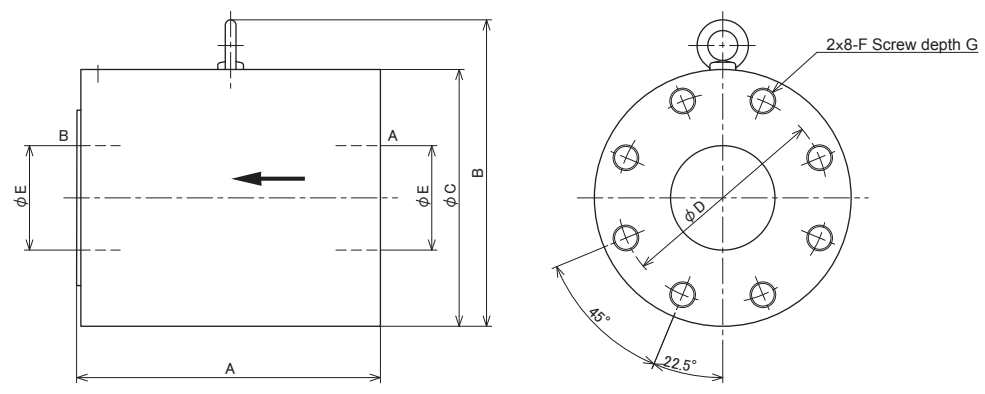
### ●C (flange connection type)



Nominal dimension	A	B	C	D	E	F	G	H	J	K	L	M	N
52	135.5	132	98	100	80	67.5	98	M16	26	M10	15	45	45
62	165.5	152	118	120	100	82.5	118	M20	32	M10	15	53	53
82	195.5	182	148	150	120	97.5	145	M24	36	M12	20	70	65
102	245.5	220	178	180	150	122.5	175	M30	40	M12	20	86.5	86.5

Note) When using the no spring type, be sure to install it so that port B faces upward.

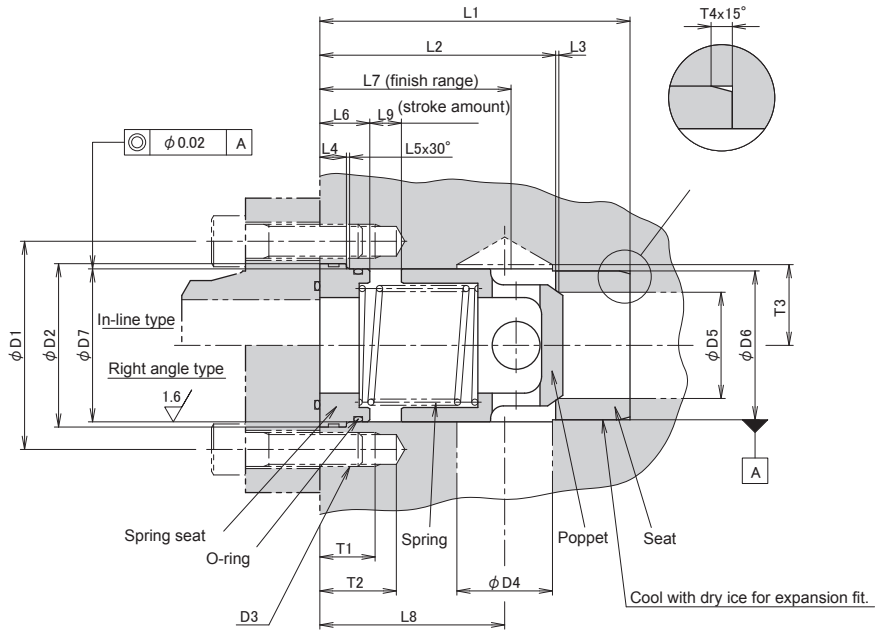
● C (flange connection type)



Nominal dimension	A	B	C	D	E	F	G
125	350.5	360	300	245	122	M30	50
150	501	431	360	290	150	M36	60

Note) When using the no spring type, be sure to install it so that port B faces upward.

● C (large diameter) - cartridge type



Valve type	L1	L2	L3	L4	L5	L6	L7	L8	L9	D1 $\pm 0.2$	D2 $^{0.1}$	D3	D4	D5 <sup>H7</sup>	D6 <sup>H7</sup>	D7 <sup>H8</sup>	T1	T2	T3	T4	
C52 C- 10-	01 05 15- 30 40	146	111	1.5	12	1.5	23	90	87	15	98	77	4-M16	45	50	70	72	26	36	38	5
C62 C- 10-	01 05 15- 30 40	175	135	1.5	12	1.5	24.5	110	106	17.5	118	93	4-M20	55	63	85	86	32	42	45	5
C82 C- 10-	01 05 15- 30 40	210	165	1.5	15	2	29	135	128	25	145	115	4-M24	72	72	100	106	36	50	55	5
C102 C- 10-	01 05 15- 30 40	260	210	2	18	2	31.5 36.5	160	164	28 23	175	140	4-M30	90	90	125	132	40	55	68	6
C125 C- 10-	01 05- 15	360	295	3	30	2.5	51.5	230	233	34.5	245	205	8-M30	122	122	180	190	50	65	98	6
C150 C- 10-	01 05- 15	510	430	5	32	2.5	81.5	320	354	38.3	290	240	8-M36	150	150	220	230	60	75	118	6

(Note) When used for in-line, a hole of  $\phi D4$  is not necessary.