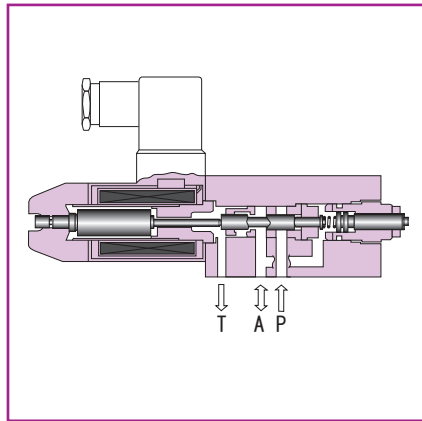
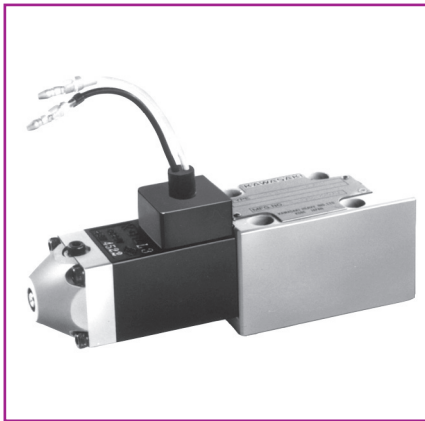
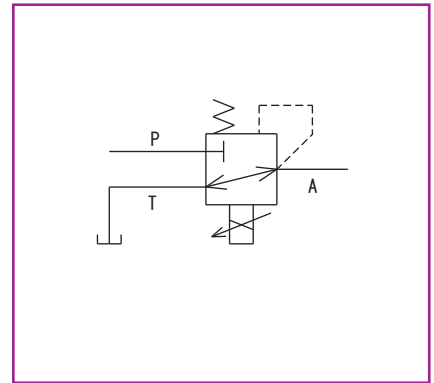


Solenoid proportional pilot pressure reducing valve – Direct operated type **PRDP6**

Solenoid proportional pilot pressure reducing valve – Direct operated type



● Hydraulic symbols



■ Overview

It consists of the DC proportional solenoid and spool type direct operated pressure reducing valve, and the position of the directional flow regulating valve and allows tilting angle of the variable capacity pump to be remotely controlled at a rate in proportion to the input current.

■ Features

1. Exclusively for single solenoid type, small size, and inexpensive.
2. Special damping mechanism with a spring realises superior stability.
3. During the initial adjustment or malfunction in the electrical system, manual operation can be done with the push rod.

www.khadamathydraulic.com
 Tell: 021-55882749
 Tell: 021-33488178
 Fax: 021-33488105

■ Type indication

PRDP 6 P - 10 / 30 - C B -

Solenoid proportional type
 Direct operated type pilot pressure reducing valve

Nominal dimension
 6

Connection method
 P = Gasket connection type
 R = Rc thread connection type
 G = G thread connection type

Series number: 10

Maximum adjustment pressure
 30 = 2.9MPa (30kgf/cm²)
 50 = 4.9MPa (50kgf/cm²)

Type of hydraulic oil

No symbol = Mineral based hydraulic oil
 V = Phosphate ester based hydraulic oil
 W = Fatty ester based hydraulic oil
 Water-glycol based hydraulic oil

Electric connection symbol

B = DIN connector
 C = DIN large connector
 L = Lead wire (with sure plug)

Solenoid ratings

C = 24 Ω × 0.75A
 D = 6 Ω × 1.5A

■ Specifications

Nominal dimension		PRDP6*-10/30	PRDP6*-10/50
Maximum working pressure MPa (kgf/cm ²)	Port P, A	13.7 (140)	
	Port T	1.0 (10)	
Secondary control pressure MPa (kgf/cm ²)		0 to 2.9 (0 to 30)	0 to 4.9 (0 to 50)
Reproducibility %		2 or less	
Hysteresis %		5 or less	
Electrical specifications	Rated current mA	700/1, 400	
	Coil resistance Ω	24/6 at 20°C	
	Dither (Recommendable value)	60Hz, 150/300mAP-P	
	Standard amplifier type	C-B10-A ¹⁰⁰ / ₂₀₀ /C-B15-D24	
Mass kg		2.5	

■ Sub-plate

Valve type	Sub-plate type	Connection diameter	Mass
PRDP6	P-DE6R14-0	Rc 1/4	1.0kg
	P-DE6G14-0	G 1/4	
	P-DE6R38-0	Rc 3/8	1.3kg
	P-DE6G38-0	G 3/8	

When you use a sub-plate, please place an order for the above sub-plate type.

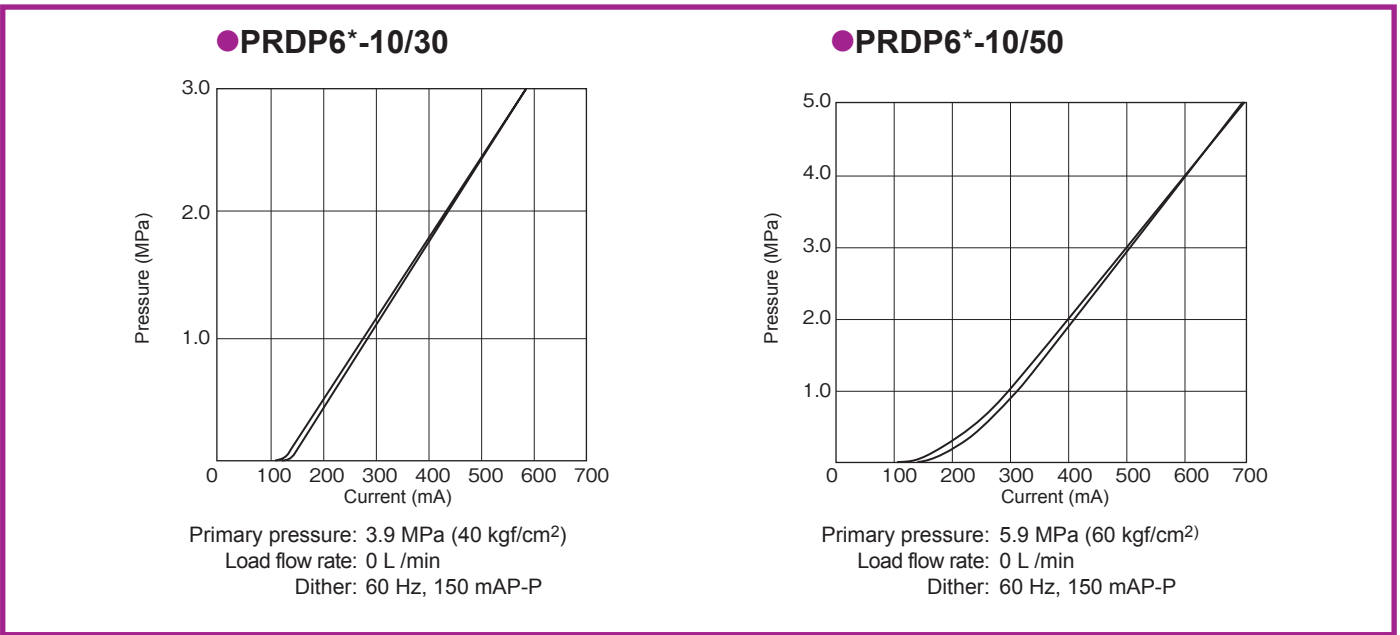
For the dimension drawing, refer to page 11 of the appendix.

■ Accessories

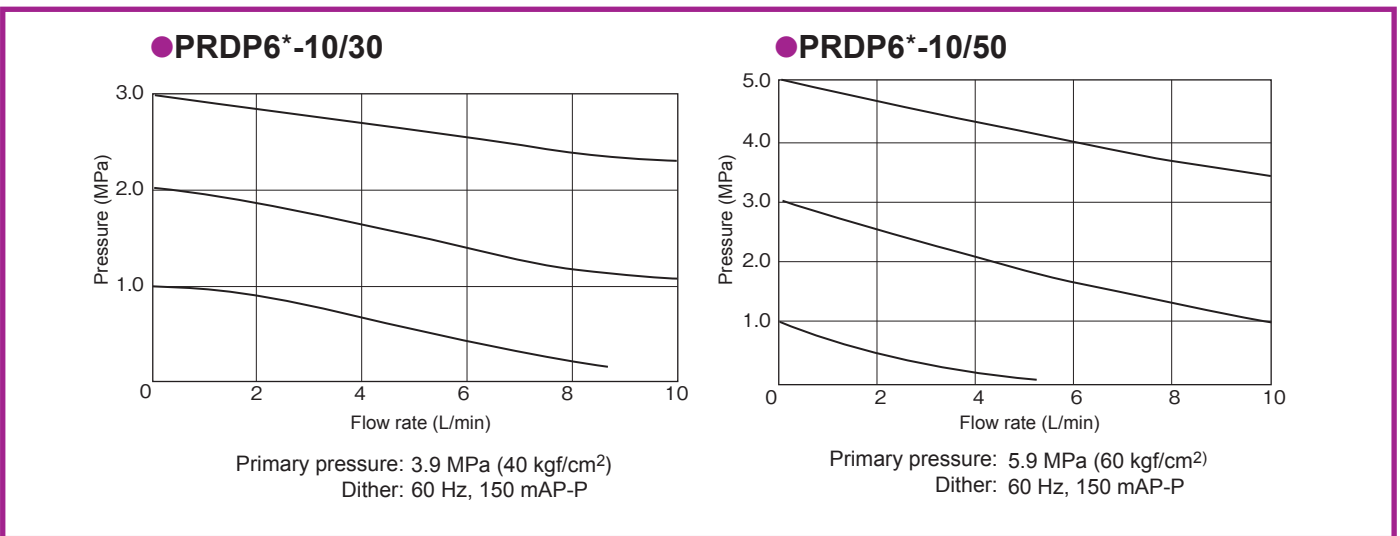
● Mounting bolt

Type	Hexagon socket head cap thread	Quantity	Tightening torque N · m (kgf · cm)
PRDP6	M5 × 50L	4 pcs.	6.9 ± 1.0 (70 ± 10.5)

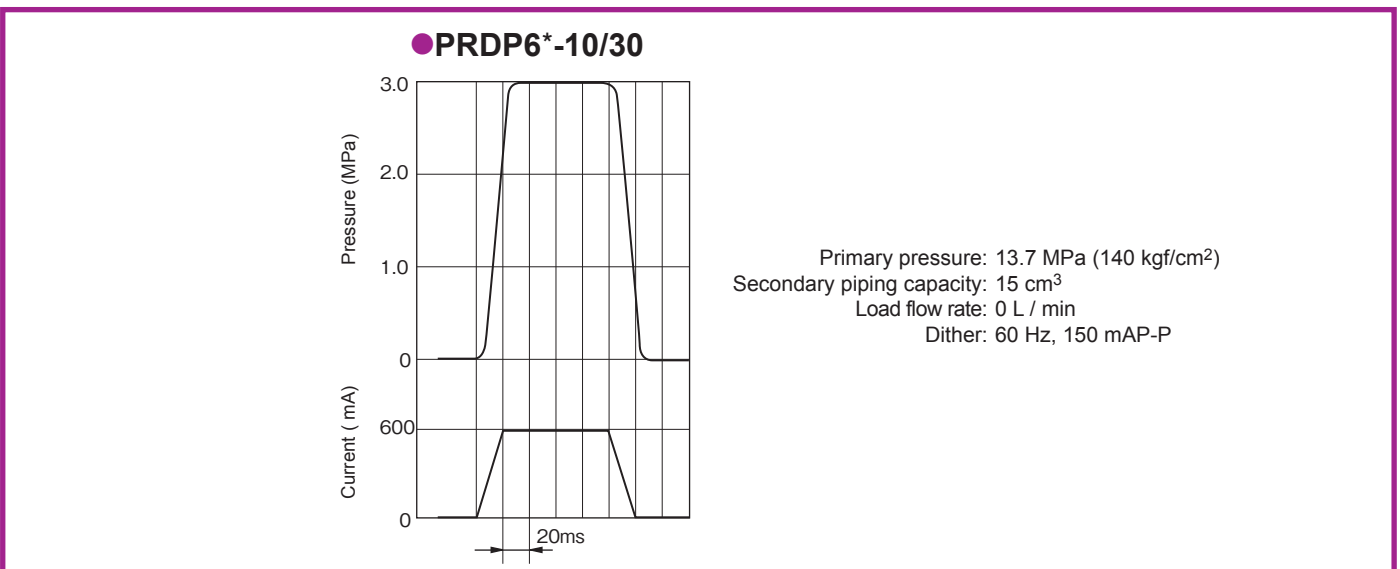
Current - Pressure characteristics (viscosity 25 mm²/s (cSt))



Load pressure – Flow rate characteristics (viscosity 25 mm²/s (cSt))

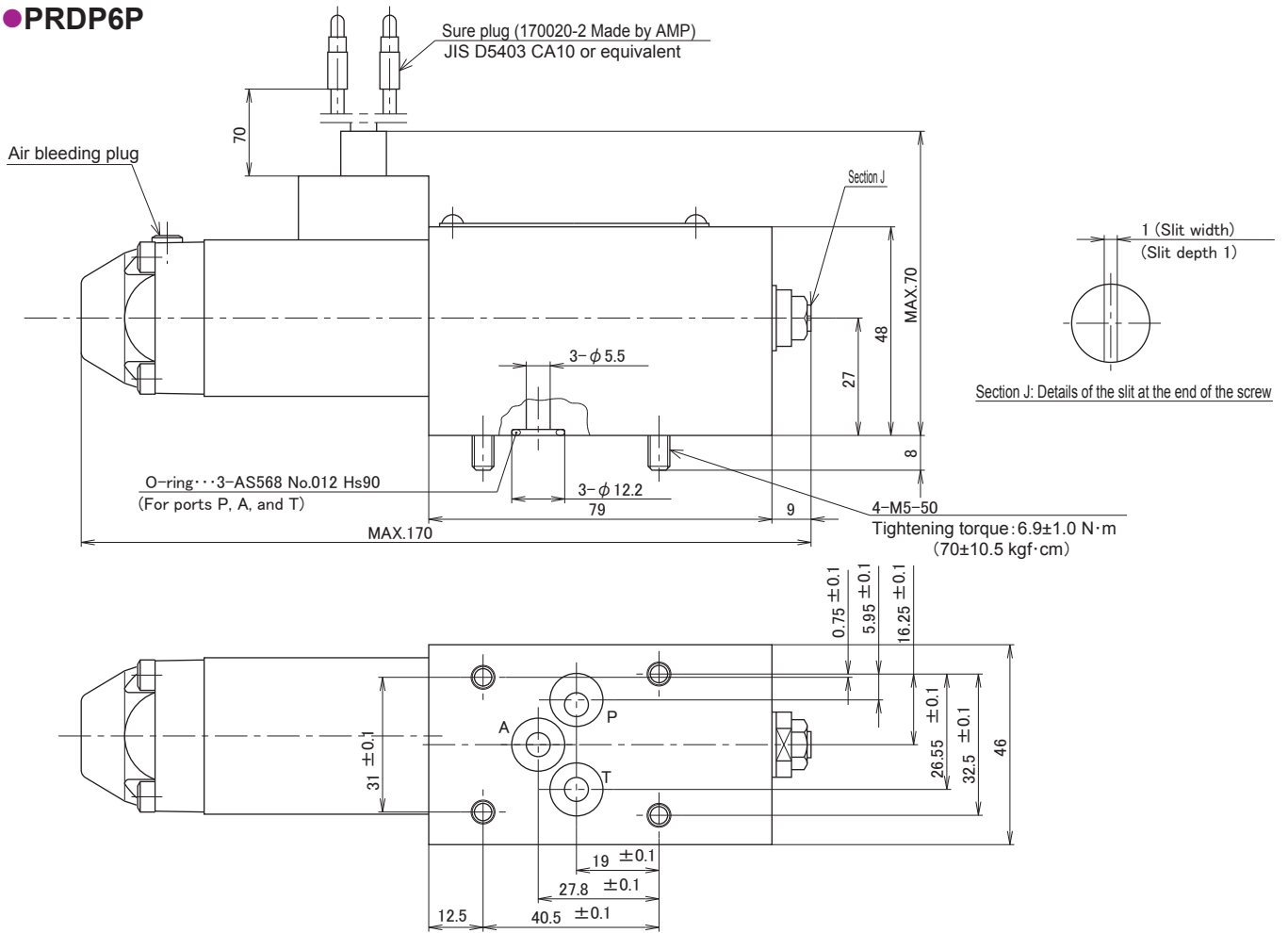


Step response characteristics (viscosity 25 mm²/s (cSt))

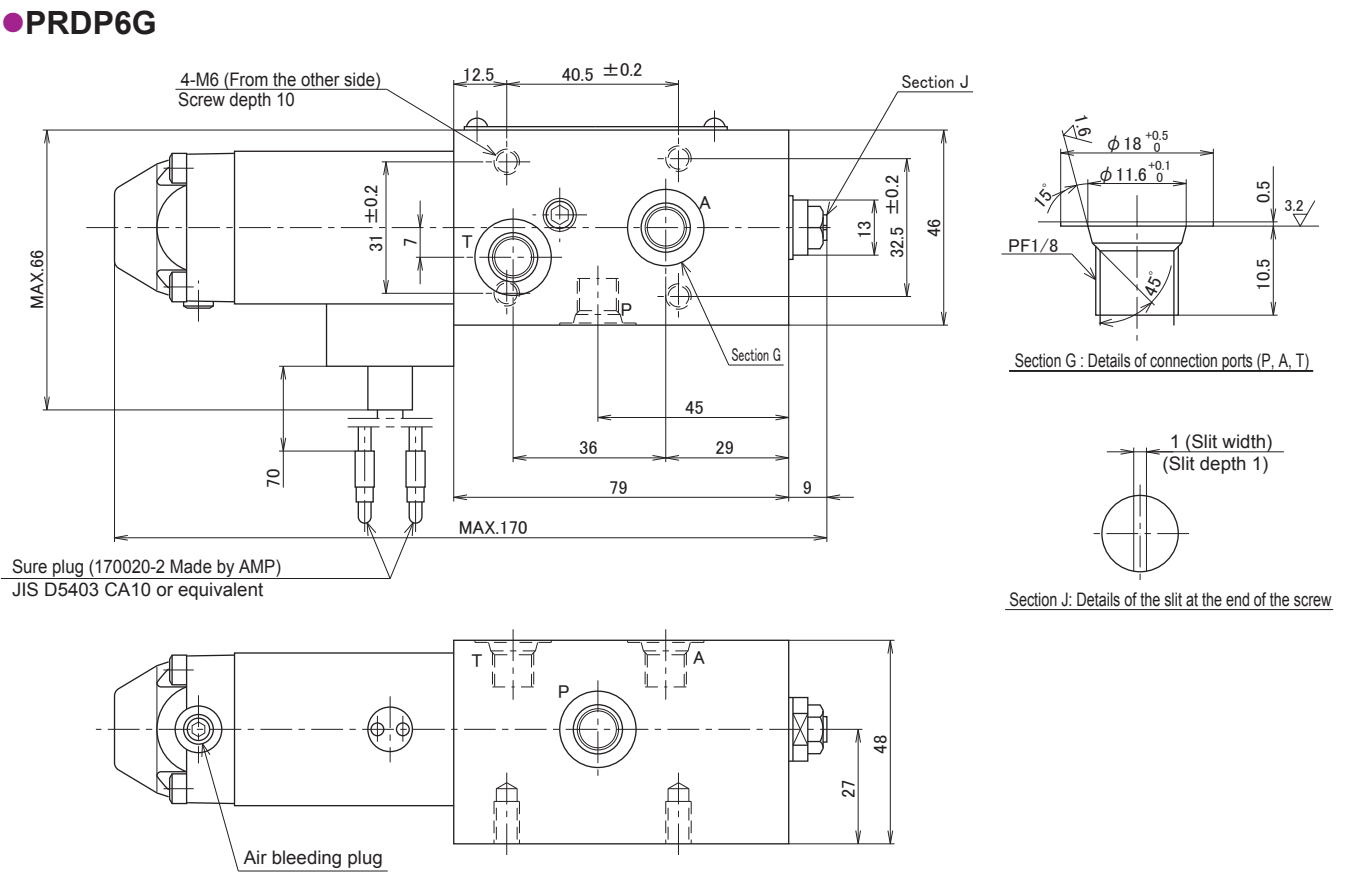


Dimension drawing

● PRDP6P



● PRDP6G



Solenoid proportional pilot pressure reducing valve - Direct operated type