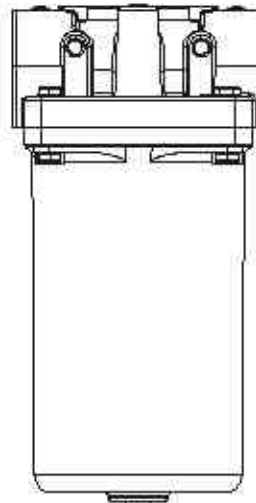
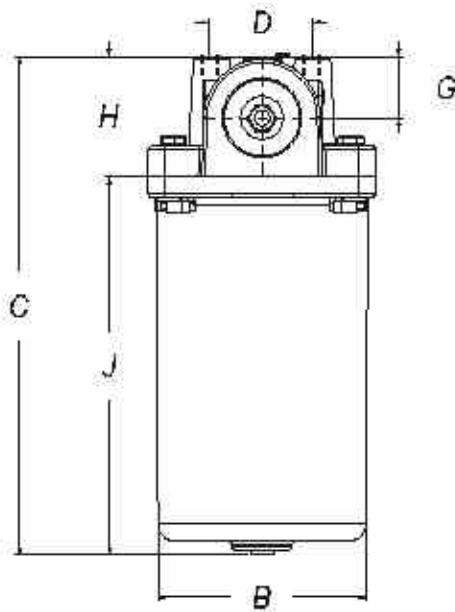
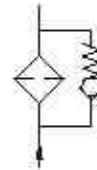
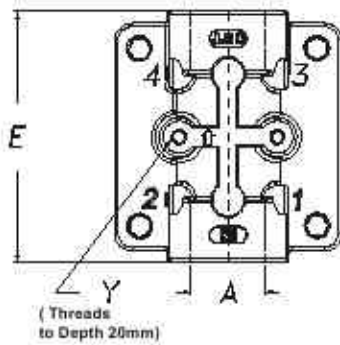


# FILTER - INLINE - HFR

- ALUMINIUM DIE CAST CONSTRUCTION
- 3 BASIC MODELS - FLOWS TO 150 LPM
- BY PASS STANDARD 1 BAR
- WORKING PRESSURE TO 20 BAR / TEST 30 BAR / BURST 40 BAR
- MAX TEMP. TO 80° C
- SUITABLE FOR MINERAL / PETROLEUM BASED OILS



MODEL	PORT 'A' BSPP	B	C	D	E	G	H	J	Y 2 OFF	WT KGS
HF * .05	1/2"	66	147	38	88	24	44	103	M 8x1.25	1.0
HF * .10	3/4" 1"	88	176	44	114	27	52	125	M 8x1.25	1.6
HF * .20	1-1/4" 1-1/2"	120	290	57	145	36	70	220	M 10x1.5	3.8

DIMENSIONS IN MM FOR REFERENCE ONLY

# FILTER - INLINE - HFR

## MODEL CODE : ASSEMBLY

HF	R	- 05	- 04"	- 010	- **	- **	- **
TYPE	SIZE	PORT THREAD		FILTRATION*	FEATURE 1	FEATURE 2	FEATURE 3
				μ MICRONS	By Pass ( OMIT IF STD)	Position Indicator Ports ( OMIT IF STD)	
R - RETURN	05	04 B	- 1/2" BSPP	P10 - 10 μ NOM	R3 - 15PSI (STD)	R-STD 2 x 1/8" NPT INLET ( 1 & 2 )	U - 3/8" - 16 UNC ( Optional ) ( Mounting Holes )
		04 N	- 1/2" NPT				
		08 S	- 3/4" UNF - 16				
S - SUCTION	10	06 B	- 3/4" BSPP	P25 - 25 μ NOM	R4 - 25 PSI	S-STD 2 x 1/8" NPT OUTLET ( 3 & 4 )	
		06 N	- 3/4" NPT				
		12 S	- 1-1/16" UNF - 12				
B - NO BYPASS	10	08 B	- 1" BSPP	A10 - 10 μ ABS	S1 - 3PSI (STD)	B-STD 4 x 1/8" NPT INLET & OUTLET ( 1, 2, 3 & 4 )	
		08 N	- 1" NPT				
	20	16 S	- 1-5/16" UNF - 12	A25 - 25 μ ABS	S2 - 5PSI	X NONE ( OPTIONAL # )	
		10 B	- 1-1/4" BSPP	M149 - 149 μ MESH			
		10 N	- 1-1/4" NPT				
		12 B	- 1-1/2" BSPP	M074 - 74 μ MESH			
12 N	- 1-1/2" NPT						
24 S	- 1-7/8" UNF - 12						

\* Optional Filtration Mesh Elements Available 43, 63, 100, 125, 300 & 575 microns INDICATOR : OPTIONAL ( TO BE ORDERED SEPERATELY )

Consult Factory For HFR 20 - 1" Port Option

Consult Factory For Tapped Holes For Cover Bolts

Element : P10 / P25 Was 010 / 025

GR - VISUAL RETURN ER - ELEC. RETURN

GS - VISUAL SUCTION ES - ELEC. SUCTION

## MODEL CODE : ELEMENT

HFE	- 05	- 010
	SIZE	FILTRATION
		μ MICRONS
HFE	05	P10 - 10 μ NOM
		P25 - 25 μ NOM
	10	A10 - 10 μ ABS
		A25 - 25 μ ABS
	20	M149 - 149 μ MESH
		M 74 - 74 μ MESH

\* Optional Filtration Mesh Elements Available M43, M63, M100, M125, M300 & M575 microns

## MODEL CODE : SEALING KIT

HFR	- 05	- SK	- **
	SIZE	SEAL KIT	FEATURE # OPTIONAL
HFR	05	SK	
	10	SK	
	20	SK	

# OPTIONAL / SPECIAL FEATURE - OMIT IF NOT REQUIRED

## Element Details

SIZE	P/A D φ	M D φ	B φ	H	Area SqCm		
					P-10/25	A-10/25	M - ***
HFE - 05	52	52	25	90	920	655	360
HFE - 10	72	66	34	109	2205	1575	560
HFE - 20	100	85	51	200	7235	5150	1800

M \*\*\* All Mesh Elements

CONSULT FACTORY FOR ANY OTHER REQUIREMENT

