

High Pressure Single Vane Pump

T6C/T6D Series



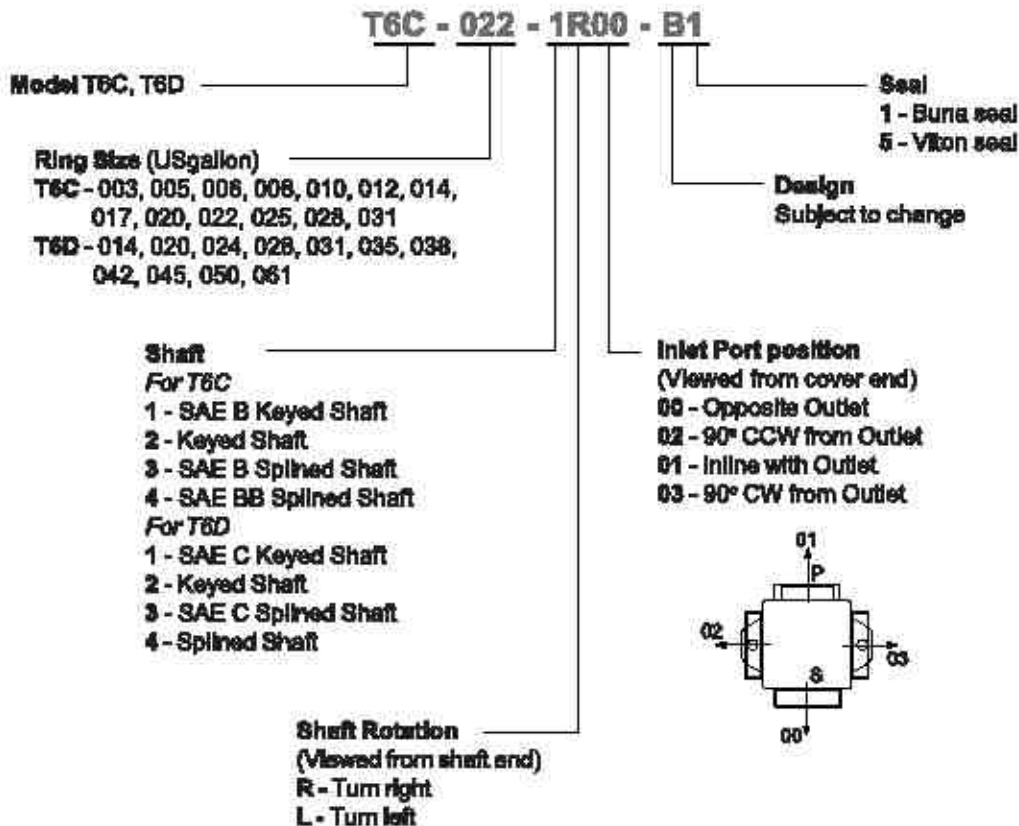
Features

- T6C and T6D Series are fixed displacement and balanced type single vane pumps. The pump is designed for higher operating pressure and greater flow at the same housing size.
- With a balanced pin-vane design, outlet pressure is continuously applied only to the pin. The pin provides the steady light force against the vane. Top and bottom areas of the vane are subject to the same pressure, either inlet or outlet pressure, depending on the vane's location during rotor rotation. This pin-vane design minimizes noise level and improves volumetric efficiency.
- With the cartridge independent of the shaft, allowing for



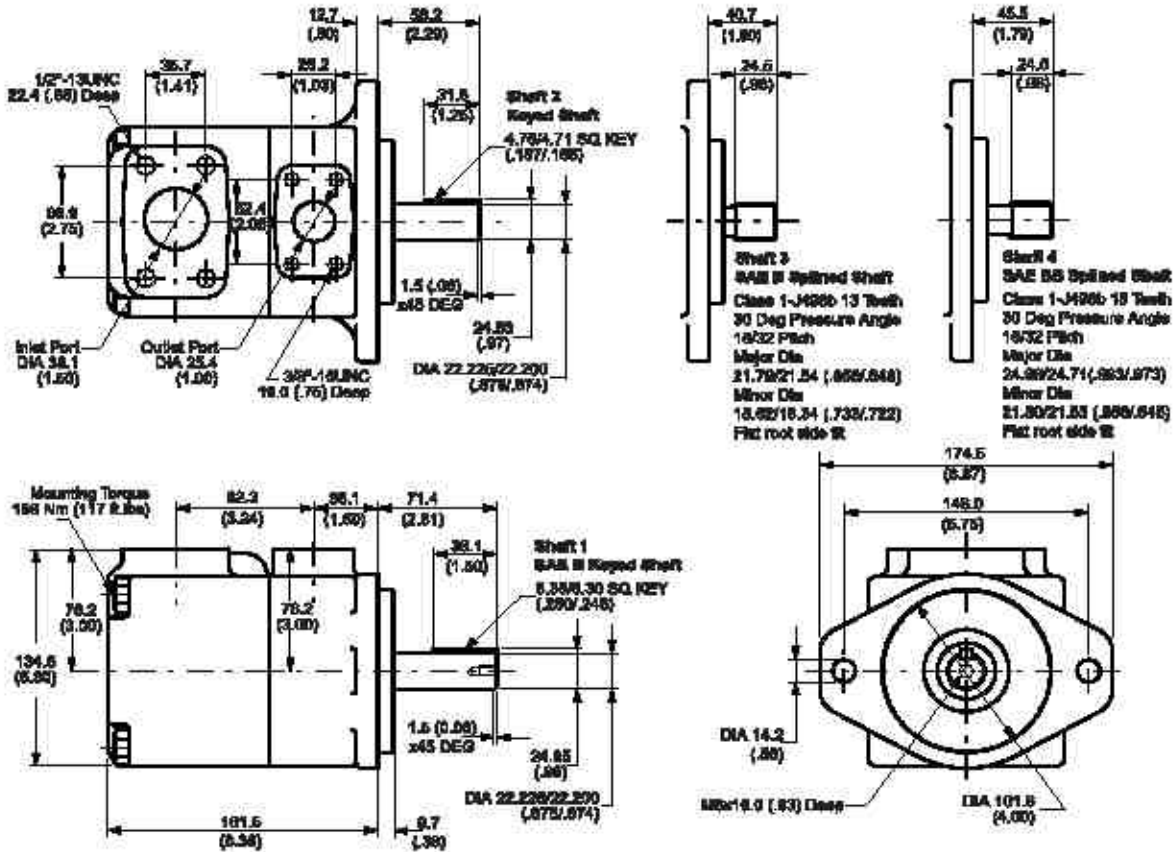
easy change of flow capacity and field servicing without removing the pump from its mounting.

Ordering Code



Installation Dimensions mm (Inch)

T6C



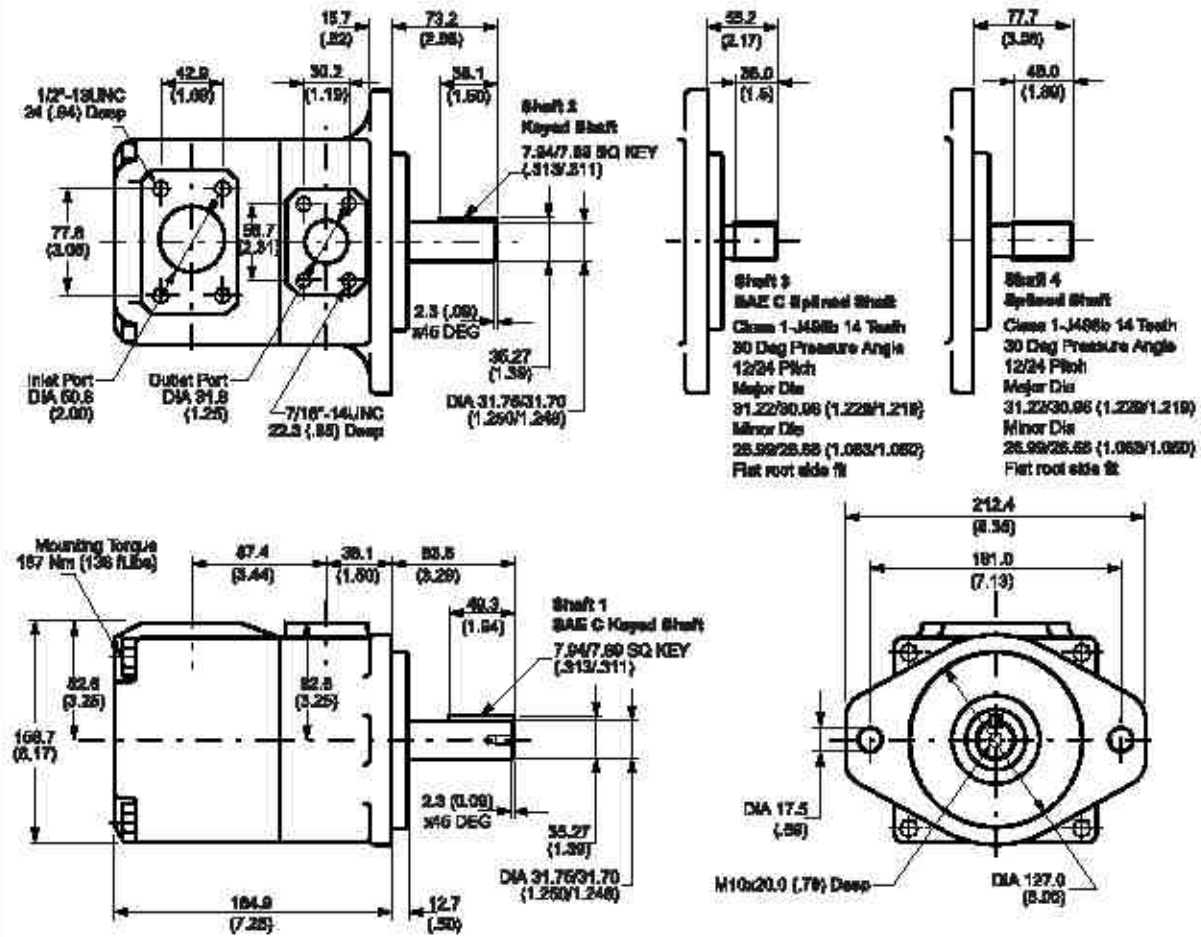
Specifications

T6C

Size	Displacement cm ³ /r (in ³ /r)	Max Speed rpm	Min Speed rpm	Max Intermittent Pressure bar (psi)	Max Continuous Pressure bar (psi)	Weight kg (lb)
003	10.8 (0.66)	2800	600	280 (4000)	240 (3500)	16 (34)
005	17.2 (1.05)					
006	21.3 (1.30)					
008	28.4 (1.81)					
010	34.1 (2.08)					
012	37.1 (2.28)					
014	48.0 (2.81)					
017	58.3 (3.56)					
020	63.8 (3.89)	2500	800	210 (3000)	180 (2300)	
022	70.3 (4.29)					
025	79.3 (4.84)					
028	88.8 (5.42)					
031	103.0 (6.10)					

Installation Dimensions mm (inch)

T6D



Specifications

T6D

Size	Displacement cm ³ /r (in ³ /r)	Max Speed rpm	Min Speed rpm	Max Intermittent Pressure bar (psi)	Max Continuous Pressure bar (psi)	Weight kg (lb)
014	47.8 (2.90)	2000	600	240 (3600)	210 (3000)	24 (53)
020	66.0 (4.03)					
024	79.5 (4.85)					
026	89.7 (5.47)					
031	98.3 (6.00)					
035	111.0 (6.77)					
036	120.3 (7.34)					
042	136.0 (8.30)	2200		210 (3000)	180 (2320)	
045	145.7 (8.89)					
050	158.0 (9.64)					
061	190.5 (11.63)	1800		120 (1700)	80 (1160)	

High Pressure Double Vane Pump

T6CC/T6DC Series



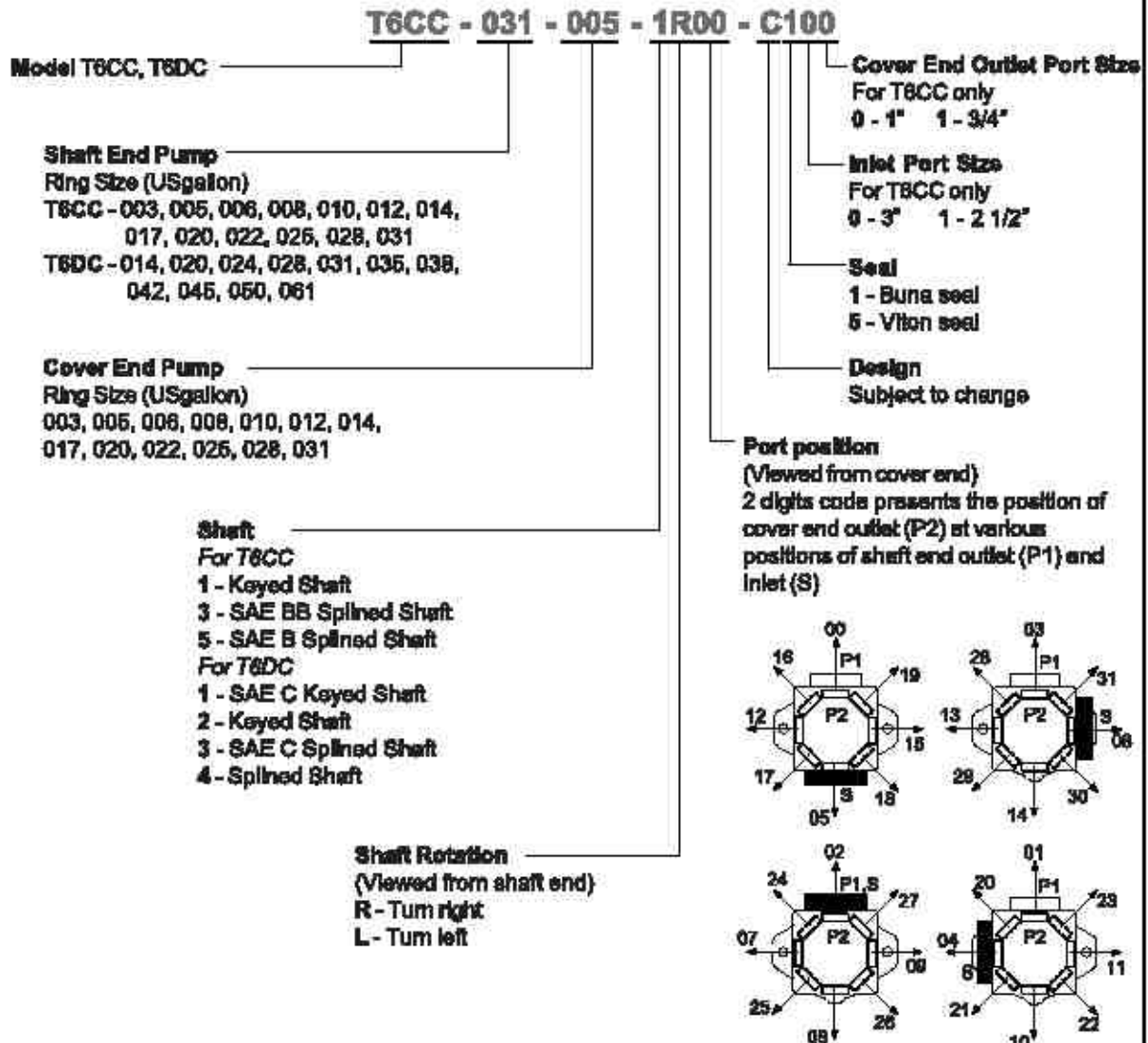
Features

- T6CC and T6DC Series are fixed displacement and balanced type double vane pumps. The pump is designed for higher operating pressure and greater flow at the same housing size.
- With a balanced pin-vane design, outlet pressure is continuously applied only to the pin. The pin provides the steady light force against the vane. Top and bottom areas of the vane are subject to the same pressure, either inlet or outlet pressure, depending on the vane's location during rotor rotation. This pin-vane design minimizes noise level and improves volumetric efficiency.
- With the cartridge independent of the shaft, allowing for



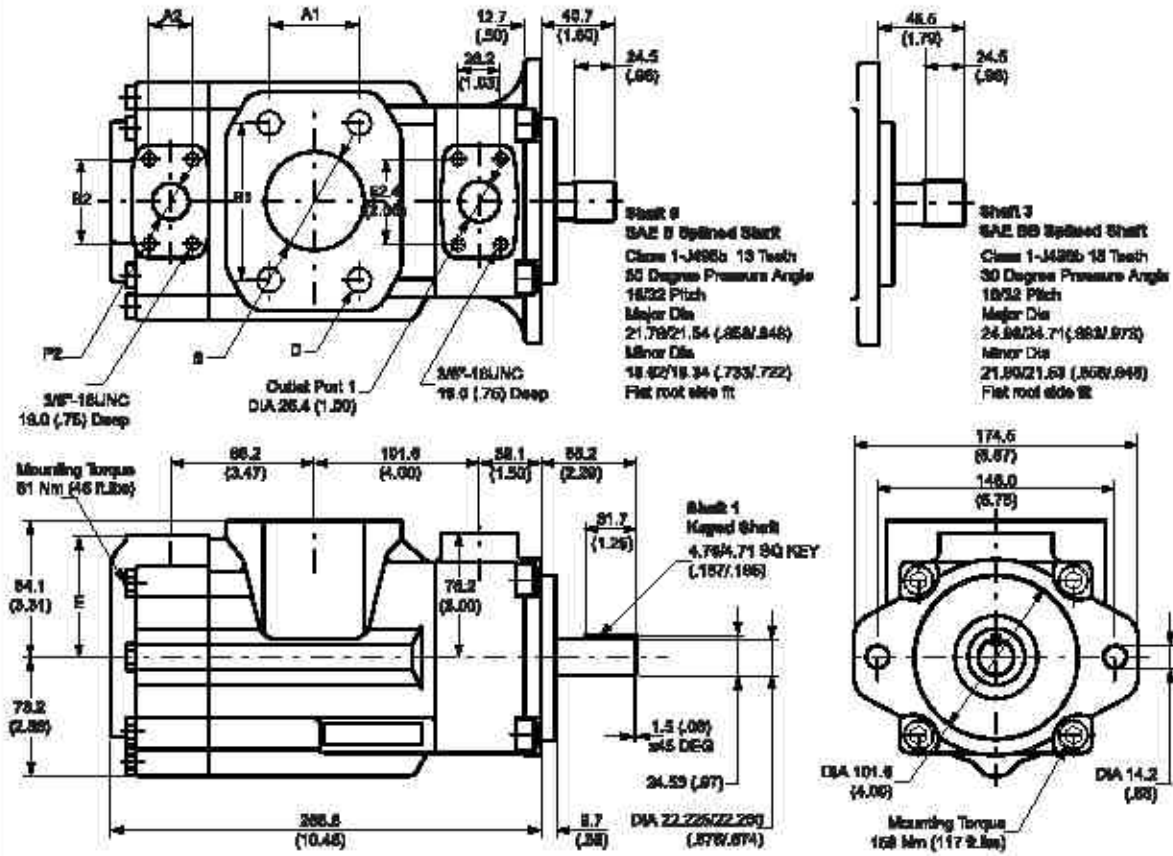
easy change of flow capacity and field servicing without removing the pump from its mounting.

Ordering Code



Specifications and Installation Dimensions mm (inch)

T6CC



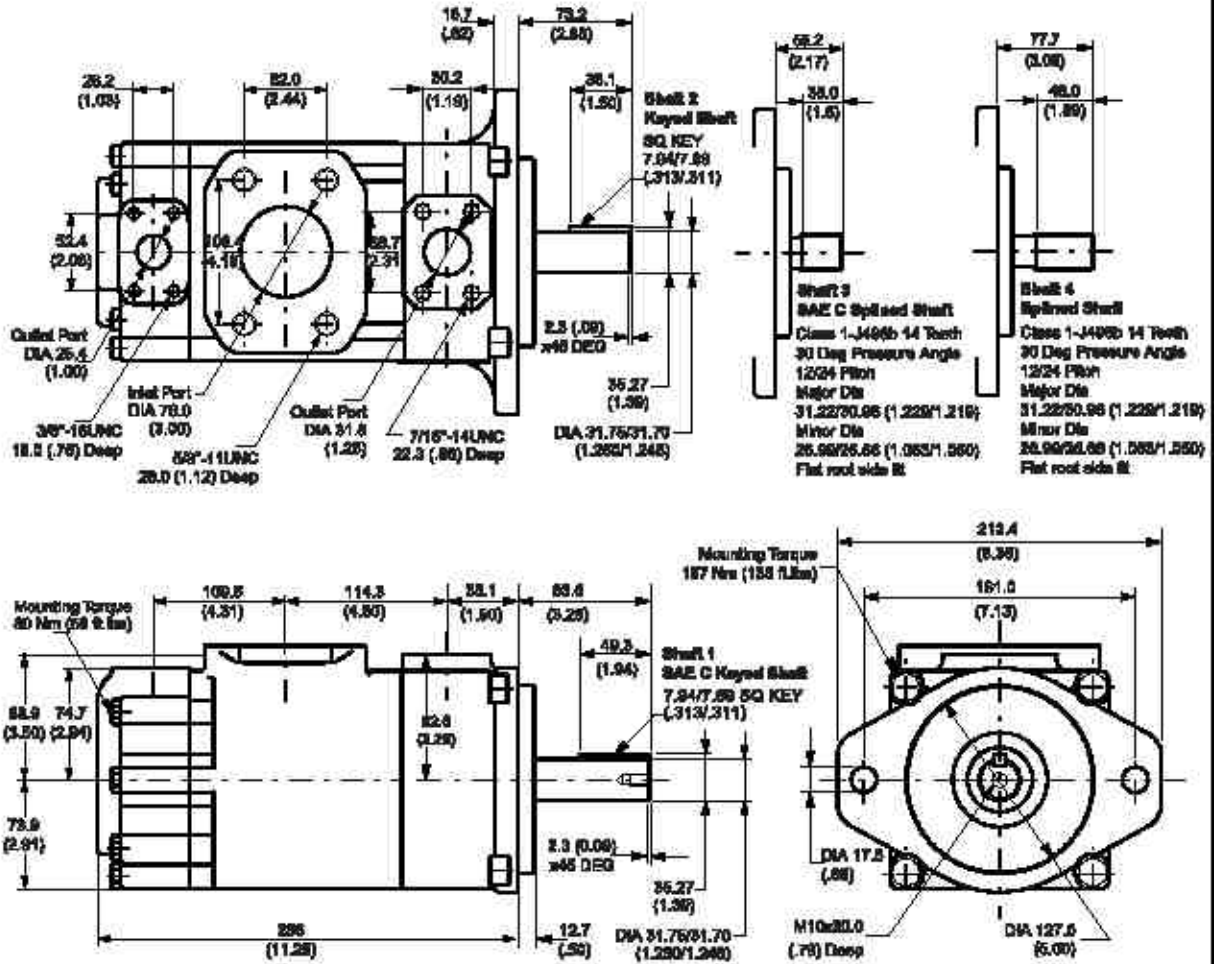
Inlet Port Size	B	A1	B1	D
3"	78.2 (3.00)	81.8 (2.44)	106.4 (4.10)	58°-11UNC 28.4 (1.12) Deep
2 1/2"	68.5 (2.60)	66.8 (2.00)	88.8 (3.50)	1/2"-13UNC 23.8 (.94) Deep

Cover End Outlet Port Size	P2	A2	B2	E
1"	25.4 (1.00)	26.2 (1.03)	52.4 (2.06)	74.7 (2.94)
3/4"	19.0 (.75)	22.4 (.88)	47.7 (1.88)	78.2 (3.00)

Shaft End Pump				Cover End Pump				Max Speed rpm	Weight kg (lb)
	cm ³ /r (in ³ /r)	Max Intermittent Pressure bar (psi)	Max Continuous Pressure bar (psi)	Size	Displacement cm ³ /r (in ³ /r)	Max Intermittent Pressure bar (psi)	Max Continuous Pressure bar (psi)		
003	10.8 (0.66)	280 (4000)	240 (3500)	003	10.8 (0.66)	280 (4000)	240 (3500)	2800	26 (57)
005	17.2 (1.05)			005	17.2 (1.05)				
008	21.3 (1.30)			008	21.3 (1.30)				
008	26.4 (1.61)			008	26.4 (1.61)				
010	34.1 (2.08)			010	34.1 (2.08)				
012	37.1 (2.26)			012	37.1 (2.26)				
014	46.0 (2.81)			014	46.0 (2.81)				
017	58.3 (3.56)			017	58.3 (3.56)				
020	63.8 (3.89)			020	63.8 (3.89)				
022	70.3 (4.28)			022	70.3 (4.28)				
025	79.3 (4.84)	210 (3000)	180 (2300)	025	79.3 (4.84)	210 (3000)	180 (2300)		
028	89.8 (5.42)			028	89.8 (5.42)				
031	100.0 (6.10)			031	100.0 (6.10)				

Specifications and Installation Dimensions mm (inch)

T6DC



Shaft End Pump				Cover End Pump				Max Speed rpm	Weight kg (lb)
Size	Displacement cm ³ /r (in ³ /r)	Max Intermittent Pressure bar (psi)	Max Continuous Pressure bar (psi)	Size	Displacement cm ³ /r (in ³ /r)	Max Intermittent Pressure bar (psi)	Max Continuous Pressure bar (psi)		
014	47.8 (2.90)	240 (3500)	210 (3000)	003	10.8 (0.66)	280 (4000)	240 (3500)	2500	37 (82)
020	66.0 (4.03)			005	17.2 (1.05)				
024	79.5 (4.85)			006	21.3 (1.30)				
028	89.7 (5.47)			008	25.4 (1.61)				
031	98.3 (6.00)			010	34.1 (2.08)				
035	111.0 (6.77)			012	37.1 (2.28)				
038	120.3 (7.34)			014	45.0 (2.81)				
042	136.0 (8.30)			017	58.3 (3.56)				
045	145.7 (8.89)			020	63.8 (3.89)				
050	168.0 (9.84)			022	70.3 (4.29)				
061	190.5 (11.63)	025	79.3 (4.84)	210 (3000)	160 (2300)				
		028	88.8 (5.42)						
		031	100.0 (6.10)						

Performance Characteristics

T6C, T6CC, Cover End of T6DC

Size	Displacement cm ³ /l (in ³ /fl)	Speed rpm	Output Flow L/min (USGPM)			Input Power kW (hp)		
			at 0 bar (0 psi)	at 140 bar (2000 psi)	at 240 bar (3600 psi)	at 7 bar (100 psi)	at 140 bar (2000 psi)	at 240 bar (3600 psi)
008	10.8 (0.66)	1000	10.8 (2.9)	8.8 (1.8)	-	0.8 (1.2)	3.7 (5.0)	-
		1200	13.0 (3.4)	8.8 (2.1)	-	1.1 (1.6)	4.4 (6.0)	-
		1500	16.2 (4.3)	11.2 (3.0)	8.2 (2.2)	1.3 (1.7)	5.4 (7.2)	6.5 (11.4)
		1800	18.4 (5.1)	14.4 (3.8)	11.4 (3.0)	1.7 (2.3)	6.4 (8.6)	10.0 (13.4)
006	17.2 (1.06)	1000	17.2 (4.6)	12.2 (3.2)	9.2 (2.4)	1.0 (1.3)	6.2 (7.0)	8.4 (11.3)
		1200	20.8 (5.4)	16.8 (4.1)	12.8 (3.3)	1.1 (1.6)	8.2 (8.3)	10.0 (13.4)
		1500	25.8 (6.8)	20.8 (5.5)	17.8 (4.7)	1.4 (1.9)	7.7 (10.3)	12.3 (16.5)
		1800	31.0 (8.2)	25.0 (6.6)	23.0 (6.1)	1.8 (2.5)	9.1 (12.2)	14.8 (19.8)
008	21.3 (1.30)	1000	21.3 (5.6)	16.8 (4.3)	13.8 (3.6)	1.0 (1.3)	8.1 (8.2)	10.0 (13.4)
		1200	26.8 (6.8)	20.8 (5.4)	17.8 (4.8)	1.2 (1.6)	7.3 (9.8)	11.9 (16.0)
		1500	32.0 (8.5)	27.0 (7.1)	24.0 (6.3)	1.5 (2.0)	9.1 (12.2)	14.8 (19.8)
		1800	38.8 (10.1)	33.8 (8.9)	30.8 (8.0)	1.8 (2.5)	10.8 (14.5)	17.8 (23.8)
008	28.4 (1.61)	1000	28.4 (7.0)	21.4 (5.7)	18.4 (4.8)	1.1 (1.5)	7.3 (9.8)	12.0 (16.1)
		1200	31.7 (8.4)	26.7 (7.1)	23.7 (6.3)	1.3 (1.7)	6.7 (11.7)	14.4 (19.3)
		1500	38.8 (10.3)	34.8 (9.1)	31.8 (8.5)	1.6 (2.1)	10.9 (14.6)	17.8 (23.8)
		1800	47.8 (12.6)	42.8 (11.2)	38.8 (10.4)	2.1 (2.8)	13.0 (17.4)	21.3 (28.8)
010	34.1 (2.08)	1000	34.1 (9.0)	29.1 (7.7)	28.1 (8.9)	1.2 (1.6)	9.1 (12.2)	16.1 (20.2)
		1200	40.8 (10.8)	35.8 (9.5)	32.8 (8.7)	1.4 (1.9)	10.9 (14.8)	18.1 (24.3)
		1500	51.2 (13.5)	46.2 (12.2)	43.2 (11.4)	1.7 (2.3)	13.6 (18.2)	22.5 (30.2)
		1800	61.4 (16.2)	56.4 (14.8)	53.4 (14.1)	2.2 (2.9)	16.2 (21.7)	26.8 (35.8)
012	37.1 (2.26)	1000	37.1 (9.8)	32.1 (8.5)	28.1 (7.7)	1.2 (1.6)	9.8 (13.1)	18.3 (24.3)
		1200	44.5 (11.8)	38.5 (10.4)	36.5 (8.8)	1.4 (1.9)	11.7 (15.7)	19.5 (26.1)
		1500	55.7 (14.7)	50.7 (13.4)	47.7 (12.8)	1.7 (2.3)	14.8 (19.8)	24.3 (32.8)
		1800	66.8 (17.8)	61.8 (16.3)	58.8 (15.8)	2.3 (3.1)	17.5 (23.5)	29.0 (38.8)
014	46.0 (2.81)	1000	46.0 (12.2)	41.0 (10.8)	38.0 (10.0)	1.3 (1.7)	11.9 (16.0)	19.9 (26.7)
		1200	55.2 (14.6)	50.2 (13.3)	47.2 (12.5)	1.5 (2.0)	14.2 (19.0)	23.8 (31.8)
		1500	69.0 (18.2)	64.0 (16.9)	61.0 (16.1)	1.9 (2.5)	17.7 (23.7)	28.8 (38.7)
		1800	82.8 (21.9)	77.8 (20.8)	74.8 (19.8)	2.5 (3.4)	21.2 (28.4)	35.4 (47.5)
017	58.5 (3.58)	1000	58.5 (15.4)	53.3 (14.1)	50.3 (13.3)	1.5 (2.0)	14.8 (19.8)	24.8 (33.2)
		1200	70.0 (18.8)	65.0 (17.2)	62.0 (16.4)	1.7 (2.3)	17.7 (23.7)	29.7 (39.8)
		1500	87.8 (23.1)	82.5 (21.8)	79.5 (21.0)	2.1 (2.8)	22.0 (29.5)	37.0 (49.8)
		1800	104.9 (27.7)	99.9 (26.4)	96.9 (25.8)	2.7 (3.6)	28.4 (35.4)	44.2 (58.2)
020	63.8 (3.88)	1000	63.8 (16.9)	58.8 (15.5)	55.8 (14.7)	1.5 (2.0)	18.0 (21.4)	27.0 (36.2)
		1200	78.8 (20.2)	71.8 (18.9)	68.8 (18.1)	1.8 (2.4)	19.2 (25.7)	32.3 (43.3)
		1500	95.7 (25.3)	80.7 (24.0)	87.7 (23.2)	2.2 (2.9)	24.0 (32.2)	40.3 (54.0)
		1800	114.8 (30.3)	109.8 (29.0)	106.8 (28.2)	2.8 (3.6)	29.7 (39.5)	48.2 (64.8)
022	70.3 (4.28)	1000	70.3 (18.6)	65.3 (17.3)	62.3 (16.5)	1.6 (2.1)	17.8 (23.8)	29.8 (39.7)
		1200	84.4 (22.3)	79.4 (21.0)	76.4 (20.2)	1.9 (2.5)	21.0 (28.2)	36.5 (47.5)
		1500	106.5 (27.9)	100.5 (26.8)	97.5 (25.8)	2.3 (3.1)	28.2 (35.1)	44.2 (58.2)
		1800	126.5 (33.4)	121.5 (32.1)	118.5 (31.3)	3.0 (4.0)	31.4 (42.1)	52.9 (70.8)
025	79.3 (4.84)	1000	79.3 (21.0)	74.3 (19.8)	71.3 (18.8)	1.7 (2.3)	18.7 (25.4)	33.2 (44.5)
		1200	95.2 (26.2)	90.2 (23.8)	87.2 (23.0)	2.0 (2.7)	23.8 (31.8)	38.8 (51.4)
		1500	119.0 (31.4)	114.0 (30.1)	111.0 (29.3)	2.5 (3.4)	29.4 (39.4)	49.8 (66.5)
		1800	142.7 (37.7)	137.7 (36.4)	134.7 (35.6)	3.2 (4.3)	35.2 (47.2)	59.3 (79.5)
028	88.8 (5.42)	1000	88.8 (23.5)	83.8 (22.1)	81.3 (21.5)*	1.8 (2.4)	21.9 (28.4)	32.5 (43.5)*
		1200	108.8 (28.2)	101.8 (26.8)	99.1 (26.2)*	2.1 (2.8)	28.2 (35.1)	38.9 (52.1)*
		1500	133.2 (35.2)	126.2 (33.9)	125.7 (33.2)*	2.7 (3.6)	32.7 (43.8)	48.8 (65.0)*
		1800	159.8 (42.2)	154.8 (40.9)	152.3 (40.2)*	3.4 (4.5)	39.2 (52.5)	56.1 (77.9)*
031	100.0 (6.10)	1000	100.0 (26.4)	95.0 (25.1)	92.5 (24.4)*	2.0 (2.7)	24.5 (32.8)	35.4 (46.8)*
		1200	120.0 (31.7)	115.0 (30.4)	112.5 (29.7)*	2.3 (3.1)	29.4 (39.4)	43.8 (58.4)*
		1500	150.0 (39.6)	145.0 (38.3)	142.5 (37.6)*	2.9 (3.9)	36.8 (49.1)	54.4 (72.9)*
		1800	180.0 (47.8)	175.0 (46.2)	172.5 (45.6)*	3.6 (4.8)	43.9 (58.8)	65.1 (87.3)*

*Size 28 and 31, at max pressure 210 bar (3000 psi)

Performance Characteristics

T6D, Shaft End of T6DC

Size	Displacement cm ³ /r (in ³ /r)	Speed rpm	Output Flow L/min (USgpm)			Input Power kW (hp)		
			at 0 bar (0 psi)	at 140 bar (2000 psi)	at 240 bar (3500 psi)	at 7 bar (100 psi)	at 140 bar (2000 psi)	at 240 bar (3500 psi)
014	47.6 (2.90)	1000	47.6 (12.6)	38.6 (10.2)	32.8 (8.6)	1.8 (2.1)	12.5 (16.8)	20.7 (27.7)
		1200	57.1 (15.1)	48.1 (12.7)	42.1 (11.1)	1.8 (2.4)	14.9 (20.0)	24.8 (33.2)
		1500	71.4 (18.8)	62.4 (16.5)	56.4 (14.8)	2.3 (3.1)	18.5 (24.8)	30.7 (41.2)
		1800	85.7 (22.6)	76.7 (20.3)	70.7 (18.7)	2.9 (3.9)	22.3 (29.8)	36.9 (49.5)
020	66.0 (4.03)	1000	66.0 (17.4)	57.0 (16.1)	51.0 (13.5)	1.8 (2.4)	18.8 (22.5)	28.1 (37.7)
		1200	78.2 (20.9)	70.2 (18.5)	64.2 (17.0)	2.1 (2.8)	20.1 (26.9)	33.6 (45.0)
		1500	99.0 (26.2)	90.0 (23.8)	84.0 (22.2)	2.7 (3.6)	24.9 (33.4)	41.7 (55.9)
		1800	116.8 (31.4)	109.8 (29.0)	103.8 (27.4)	3.3 (4.4)	30.1 (40.3)	50.1 (67.2)
024	78.5 (4.85)	1000	78.5 (21.0)	70.5 (18.8)	64.5 (17.0)	1.9 (2.5)	20.0 (26.6)	33.5 (44.9)
		1200	95.4 (25.2)	86.4 (22.8)	80.4 (21.2)	2.2 (2.9)	23.9 (32.0)	40.1 (53.8)
		1500	119.3 (31.5)	110.3 (29.1)	104.3 (27.6)	2.9 (3.9)	29.7 (39.8)	48.8 (65.8)
		1800	143.1 (37.6)	134.1 (35.4)	128.1 (33.8)	3.8 (4.8)	35.7 (47.9)	59.9 (80.3)
028	89.7 (5.47)	1000	89.7 (23.7)	80.7 (21.3)	74.7 (19.7)	2.0 (2.7)	22.3 (29.9)	37.5 (50.3)
		1200	107.8 (28.4)	98.8 (26.1)	92.8 (24.5)	2.4 (3.2)	26.7 (35.8)	45.0 (60.3)
		1500	134.8 (35.6)	125.8 (33.2)	119.8 (31.6)	3.1 (4.2)	33.2 (44.5)	55.9 (74.9)
		1800	161.5 (42.7)	152.5 (40.3)	146.5 (38.7)	3.9 (5.1)	40.0 (53.6)	67.2 (90.1)
031	98.3 (6.03)	1000	98.3 (26.8)	89.3 (23.8)	83.3 (22.0)	2.1 (2.8)	24.3 (32.6)	41.0 (55.0)
		1200	116.0 (31.2)	109.0 (28.8)	103.0 (27.2)	2.5 (3.4)	29.1 (39.0)	49.1 (65.8)
		1500	147.5 (39.0)	138.5 (36.6)	132.5 (35.0)	3.2 (4.3)	36.2 (48.5)	61.1 (81.9)
		1800	178.9 (48.7)	167.9 (44.4)	161.9 (42.8)	4.0 (5.4)	43.8 (58.4)	73.4 (98.4)
035	111.0 (6.77)	1000	111.0 (29.3)	102.0 (26.9)	96.0 (25.4)	2.3 (3.1)	27.3 (36.8)	48.1 (61.8)
		1200	133.2 (35.2)	124.2 (32.8)	118.2 (31.2)	2.7 (3.6)	32.7 (43.8)	55.2 (74.0)
		1500	166.5 (44.0)	157.5 (41.8)	151.5 (40.0)	3.4 (4.6)	40.7 (54.6)	68.7 (92.1)
		1800	199.8 (52.9)	190.8 (50.4)	184.8 (48.8)	4.2 (5.6)	49.0 (65.7)	82.5 (110.8)
038	120.3 (7.34)	1000	120.3 (31.8)	111.3 (29.4)	105.3 (27.8)	2.4 (3.2)	29.5 (39.5)	49.8 (66.8)
		1200	144.4 (38.2)	135.4 (35.8)	129.4 (34.2)	2.8 (3.8)	35.3 (47.3)	59.7 (80.0)
		1500	180.5 (47.7)	171.5 (45.3)	165.5 (43.7)	3.6 (4.8)	43.9 (58.8)	74.3 (99.6)
		1800	216.5 (57.2)	207.5 (54.8)	201.5 (53.2)	4.4 (5.9)	52.9 (70.9)	89.2 (119.6)
042	136.0 (8.30)	1000	136.0 (36.9)	127.0 (33.6)	121.0 (32.0)	2.6 (3.5)	33.1 (44.4)	66.1 (76.2)
		1200	163.2 (43.1)	154.2 (40.7)	148.2 (39.2)	3.0 (4.0)	39.7 (53.2)	67.2 (90.1)
		1500	204.0 (53.9)	195.0 (51.5)	189.0 (49.9)	3.9 (5.2)	49.4 (66.2)	63.7 (112.2)
		1800	244.8 (64.7)	235.8 (62.3)	229.8 (60.7)	4.8 (6.4)	59.5 (79.6)	100.5 (134.7)
045	145.7 (8.89)	1000	145.7 (38.5)	136.7 (36.1)	130.7 (34.5)	2.7 (3.6)	35.4 (47.5)	69.9 (90.3)
		1200	174.8 (46.2)	165.8 (43.8)	159.8 (42.2)	3.2 (4.3)	42.4 (56.8)	71.9 (96.4)
		1500	218.8 (57.8)	208.8 (55.4)	203.8 (53.8)	4.0 (5.4)	52.8 (70.8)	89.5 (120.0)
		1800	262.3 (69.3)	253.3 (66.9)	247.3 (65.3)	5.0 (6.7)	63.5 (85.1)	107.5 (144.1)
050	158.0 (9.64)	1000	158.0 (41.7)	149.0 (39.4)	145.0 (38.3)*	2.8 (3.8)	36.3 (51.3)	58.8 (78.3)*
		1200	189.8 (50.1)	180.8 (47.7)	176.8 (46.7)*	3.3 (4.4)	45.8 (61.4)	68.2 (91.4)*
		1500	237.0 (62.6)	228.0 (60.2)	224.0 (59.2)*	4.3 (5.8)	57.1 (78.5)	85.9 (113.9)*
		1800	284.4 (75.1)	275.4 (72.8)	271.4 (71.7)*	5.2 (7.0)	68.7 (92.1)	102.1 (136.9)*
081	190.5 (11.83)	1000	190.5 (50.3)	186.5 (49.3)*	-	3.2 (4.3)	23.4 (31.4)*	-
		1200	228.6 (60.4)	224.6 (58.3)*	-	3.8 (5.1)	28.0 (37.5)*	-
		1500	285.8 (75.5)	281.8 (74.5)*	-	4.8 (6.4)	35.0 (48.8)*	-
		1800	342.9 (90.6)	338.9 (88.5)*	-	5.8 (7.8)	42.1 (56.4)*	-

*Size 050, at max pressure 210 bar (3000 psi) *Size 081, at pressure 70 bar (1000 psi)