

Remote Control Relief Valve

RM Series



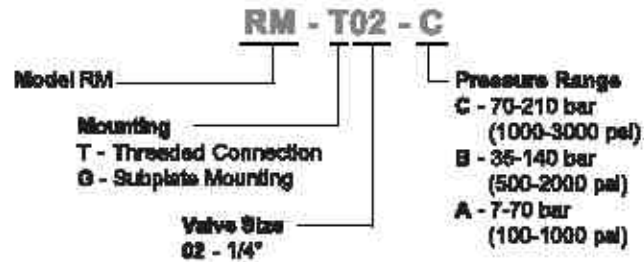
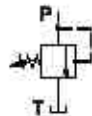
Features and Handling

- RM Series are Direct type relief valves with three pressure ranges available. They can be used as remote control relief valve when they are connected to the vent port of any balanced piston type relief valves.
- To adjust the set pressure, loosen the lock nut of the valve and turn the handle to adjust the pressure. Maintain the back pressure at the tank port as low as possible, less than 2 bar (28 psi).



Order Code and Specification

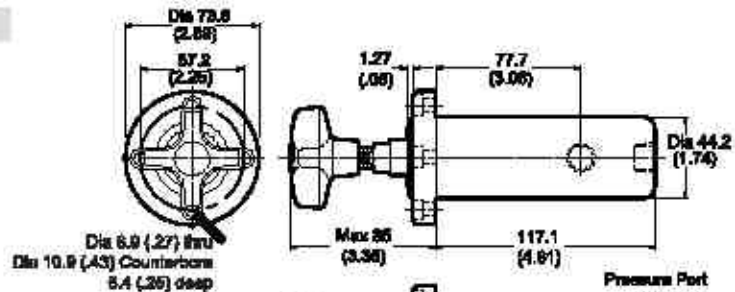
Model	Maximum Flow L/min (gpm)	Maximum Pressure bar (psi)	Weight kg (lb)
RM-T02	12 (3.2)	210	1.5 (3.3)
RM-G02	2 (0.5)	(3000)	1.4 (3.1)



Installation Dimensions mm (Inch)

RM-T02, RM-G02

RM-T02



RM-G02

