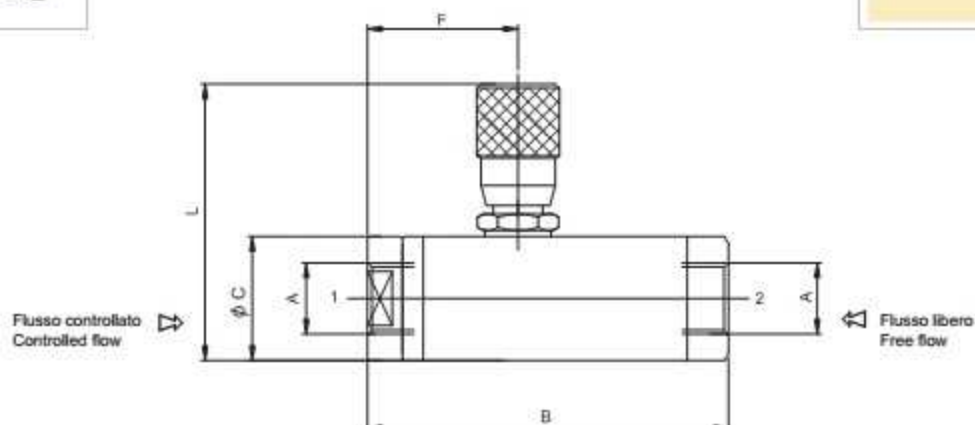
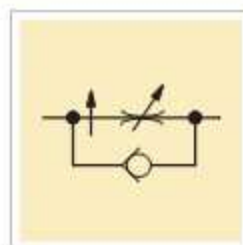




Le valvole di controllo flusso compensate regolabili VRC vengono utilizzate per mantenere il flusso costante.

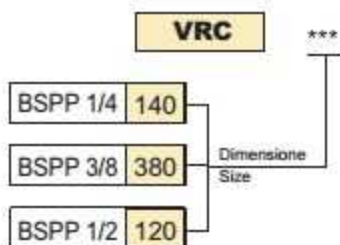
VRC compensated flow control valves allow to keep the flow constant.



Caratteristiche tecniche  
Features

Codice Code	A	B	F	L	Ch	Portata Max Max flow l/min	Pressione Max Max pressure bar	Peso Weight Kg
VRC140	BSPP 1/4	88	51	52	27	10	250	0.34
VRC380	BSPP 3/8	88	51	52	27	18	250	0.32
VRC120	BSPP 1/2	108	61	57	36	33	250	0.70

Codice di ordinazione  
Ordering code



Perdite di carico  
Pressure drops

