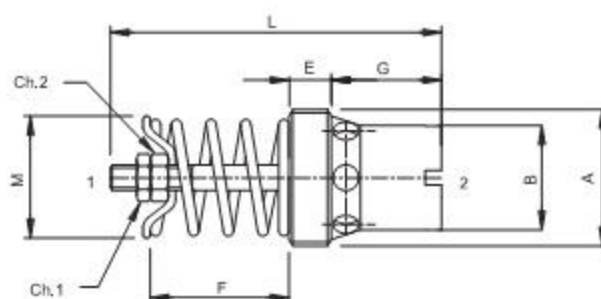
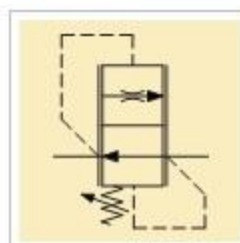




Le valvole di controllo discesa compensate regolabili VRD vengono utilizzate per mantenere costante la discesa in un carico, indipendentemente dalla pressione di lavoro e del valore del carico. La regolazione è consentita all'interno del campo di taratura.

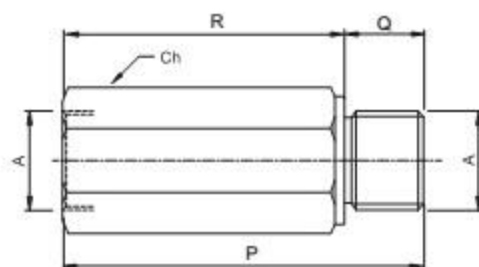
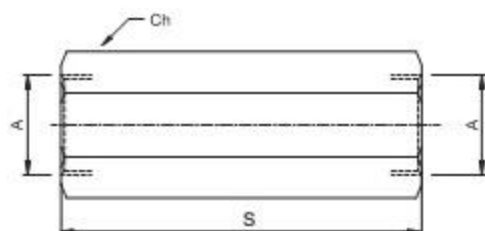
VRD adjustable compensated load control valves keep the load descent constant, without effect by working pressure and load valve. Adjustment is allowed inside the setting range.



Caratteristiche tecniche
Features

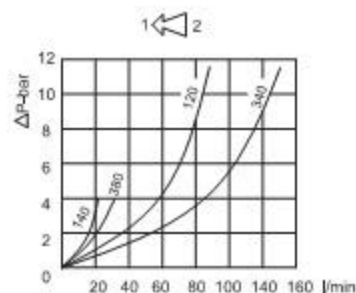
Codice Code	A	Portata Max Max flow l/min	Pressione Max Max pressure bar	B	E	G	L	M	Ch1	Ch2	Coppia di serraggio Tightening torque Nm	Peso Weight Kg
VRD 140	BSPP 1/4	15	300	10	6	13,5	39	10	5,5	5,5	6	0,013
VRD 380	BSPP 3/8	35		12,5	5	15,5	45	14	6	7	8	0,024
VRD 120	BSPP 1/2	65		16	7	16	51	18	6	7	12	0,037
VRD 340	BSPP 3/4	150		20	10	21	62	23	6	7	15	0,070

Colonnette per VRD
Housings for VRD



Codice Code	A	S	Ch	Peso Weight Kg
61100051	1/4	66	19	0,11
61100052	3/8	73	22	0,12
61100053	1/2	81	27	0,20
61100054	3/4	99	32	0,29

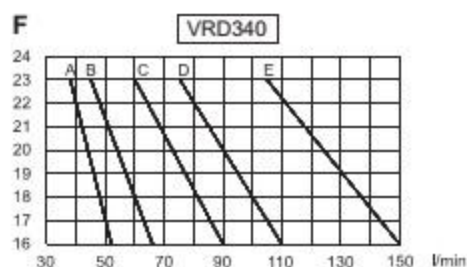
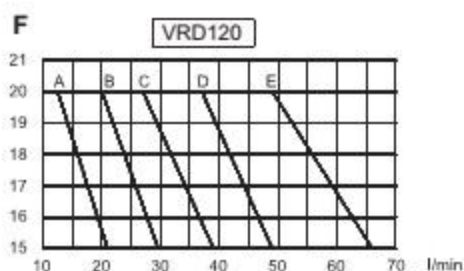
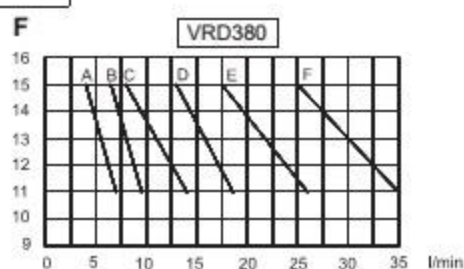
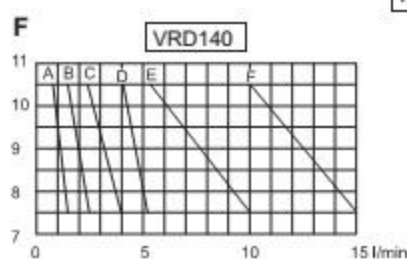
Codice Code	A	R	P	Q	Ch	Peso Weight Kg
61100057	1/4	57	68	11	19	0,11
61100058	3/8	64	77	13	22	0,14
61100059	1/2	69	83	14	27	0,24
61100060	3/4	87	104	17	32	0,34



Regolazione "F"
Setting

Campo di regolazione Flow range L/min						
	A	B	C	D	E	F
VRD 140	1-1,6	1,5-2,5	2,4-4	3,9-6,3	6,2-10	9,5-15
VRD 380	2, 5-4	3,8-6,3	6,1-10	9,8-16	15,8-25	24,5-35
VRD 120	16-21	20,5-28	27,5-37	36,5-50	48-65	/
VRD 340	37-50	48-65	63-90	88-120	115-150	/

Perdite di carico
Pressure drops



Codice di ordinazione
Ordering code

VRD

*

F **

BSPP 1/4	140
BSPP 3/8	380
BSPP 1/2	120
BSPP 3/4	340

Dimensione
Size

- A
- B
- C
- D
- E
- F

Regolazione
Setting

Esempio: regolazione 15 mm - Example: setting 15 mm
Codice-Code F15

Campo di regolazione portata (Vedi tabella)
Flow setting range (see table)