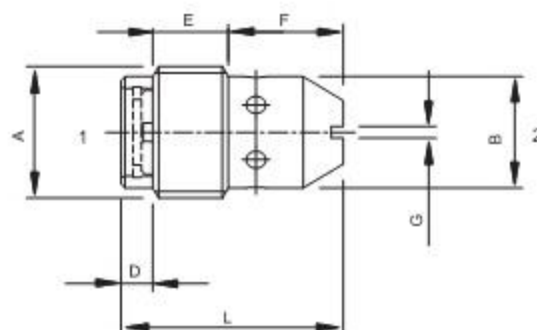
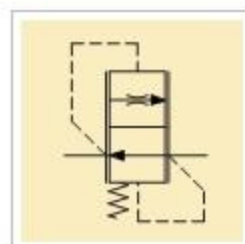




Le valvole di controllo discesa compensate fisse VSC vengono utilizzate per mantenere costante la discesa di un carico, indipendentemente dalla pressione di lavoro e dal valore del carico.

VSC fixed compensated load control valves keep the load descent constant without effect by working pressure and load value.



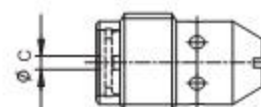
Caratteristiche tecniche
Features

Codice Code	A	Portata Max Max flow l/min	Pressione Max Max pressure bar	B	D	E	F	L	G	Coppia di Serraggio Tightening torque Nm	Peso Weight Kg
VSC 140	BSPP 1/4	12	250	10,5	7	8	15	23	1,2	2	0,015
VSC 380	BSPP 3/8	18		13,5	7	10	15	25	1,5	3	0,022
VSC 120	BSPP 1/2	47	210	17	4,5	13	17,5	35	2	4	0,048

VSC 140	Portata controllata a 100 bar ± 10% Controlled flow at 100 bar ± 10% L/min
Ø C	
0.8	1
1	2
1.25	3
1.5	4
1.75	5
2	6
2.5	7
2.75	8
3	9
3.5	10
3.75	11
4	12
2.25	13
5	15

VSC 380	Portata controllata a 100 bar ± 10% Controlled flow at 100 bar ± 10% L/min
Ø C	
1.25	2
1.5	3
2	4
2.25	5
2.5	6
3	9
3.5	12
3.75	16
4	18

VSC 120	Portata controllata a 100 bar ± 10% Controlled flow at 100 bar ± 10% L/min
Ø C	
2.5	9
3	12
3.5	17
4	21
4.5	27
5	32
5.5	40
6	47



Codice di ordinazione
Ordering code

VSC

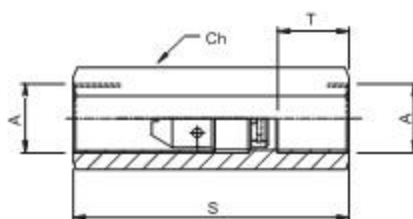
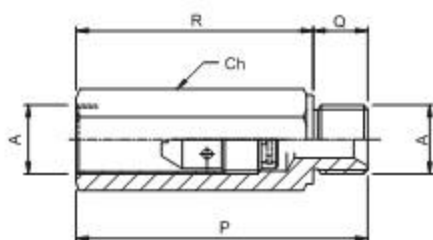
*** **

BSPP 1/4	140
BSPP 3/8	380
BSPP 1/2	120

Dimensione
Size

Portata (Vedi tabella pagina precedente)
Flow (See table on previous page)

Colonnette per VSC
Housings for VSC



Codice Code	A	R	P	Q	Ch	Peso Weight Kg
61100031	1/4	43	54	11	19	0,09
61100032	3/8	45	58	13	22	0,12
61100033	1/2	64	78	14	27	0,17

Codice Code	A	S	T	Ch	Peso Weight Kg
61100034	1/4	51	13	19	0,08
61100035	3/8	56	14	22	0,10
61100036	1/2	69	15	27	0,15