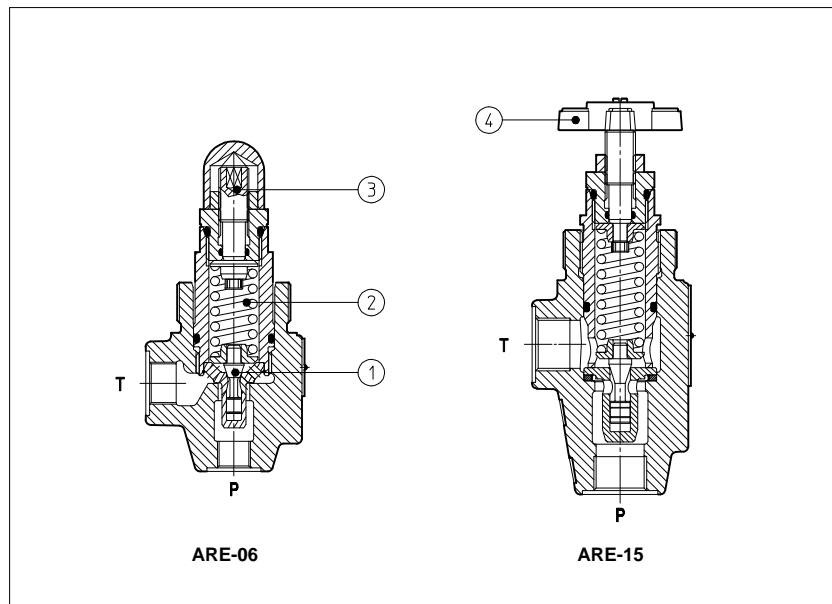


# Pressure relief valves type ARE, direct operated

in line mounting - 1/4" and 1/2" BSP threaded ports



ARE are poppet type pressure relief valves, direct operated, designed to operate in oil hydraulic circuits.

The flow P→T is permitted when pressure force acting on the poppet ① overcomes the force of the spring ②.

Regulation is operated by means of a nut ③ or optionally by means of a handwheel ④ acting on the spring. Clockwise rotation increases the pressure.

These valves are available in two sizes, with port P 1/4" BSP or 1/2" BSP. They are available also in cartridge execution for mounting in manifolds, see section 6.

ARE-06: flow up to 40 l/min pressure up to 500 bar.

ARE-15: flow up to 75 l/min, pressure up to 250 bar.

## 1 MODEL CODE

**ARE**

- **06** / **350**

\* \*\* / \*

**ARE**= pressure relief valve with thread connections  
 Available also in cartridge execution, see section 6

Size:

**06** = port P 1/4" BSP  
**15** = port P 1/2" BSP

Pressure range:

for size 06:	for size 15:
<b>350</b> = 15 → 350 bar	<b>15</b> = 2 → 15 bar
<b>500</b> = 30 → 500 bar	<b>75</b> = 4 → 75 bar
	<b>150</b> = 8 → 150 bar
	<b>250</b> = 8 → 250 bar

Synthetic fluids:  
**/WG** = water-glycol  
**/PE** = phosphate ester

Design number

Options:

**/R** = reduced leakage for special applications  
**/V** = setting adjustment by handwheel  
**/RS** = with screwed protective cap in aluminium  
**/VS** = with safety handwheel

## 2 HYDRAULIC CHARACTERISTICS

Hydraulic symbol						
Valve model	<b>ARE-06</b>			<b>ARE-15</b>		
Pressure range [bar]	15-350	30-500	2-15	4-75	8-150	8-250
Max flow [l/min]	40			75		

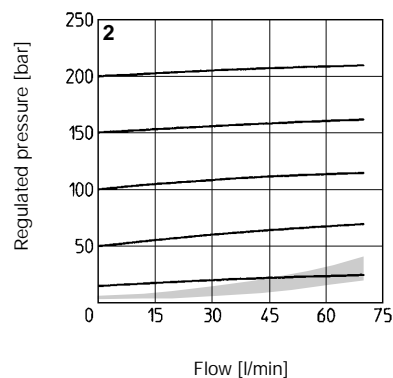
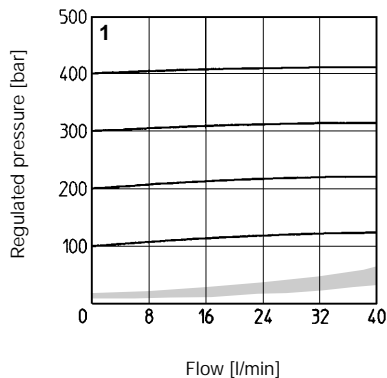
## 3 MAIN CHARACTERISTICS OF PRESSURE RELIEF VALVES TYPE ARE

Assembly position	Any position
Subplate surface finishing	Roughness index $\sqrt{Ra}$ , flatness ratio 0,01/100 (ISO 1101)
Ambient temperature	-20°C + 70°C
Fluid	Hydraulic oil as per DIN 51524...535; for other fluids see section 1
Recommended viscosity	15÷100 mm <sup>2</sup> /s at 40°C (ISO VG 15÷100)
Fluid contamination class	ISO 19/16, achieved with in line filters at 25 µm value and $\beta_{25} \geq 75$ (recommended)
Fluid temperature	T ≤ 80°C if T ≥ 60°C select /PE seals

**4 DIAGRAMS**

- 1 = ARE-06
- 2 = ARE-15

■ = min. regulated pressure

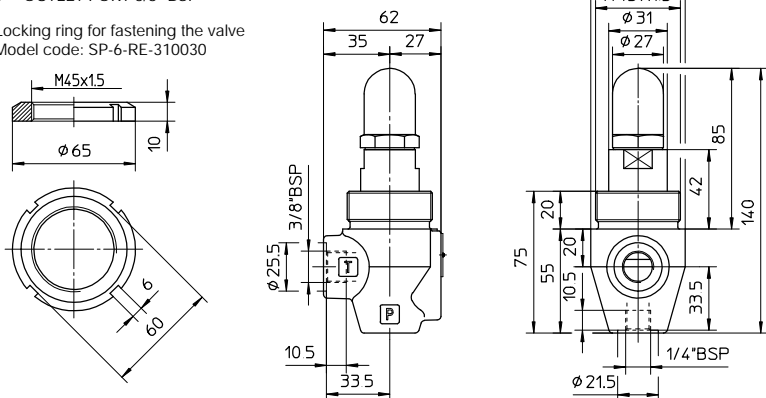


**5 DIMENSIONS [mm]**

**ARE-06**

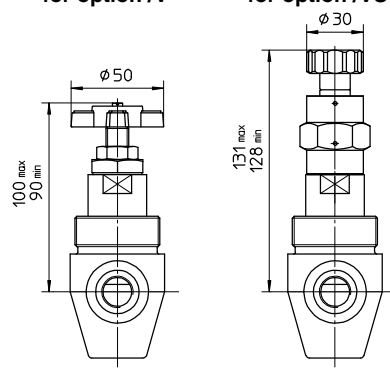
P = INLET PORT 1/4" BSP  
 T = OUTLET PORT 3/8" BSP

Locking ring for fastening the valve  
 Model code: SP-6-RE-310030



Adjustment device for option /V

Adjustment device for option /VS

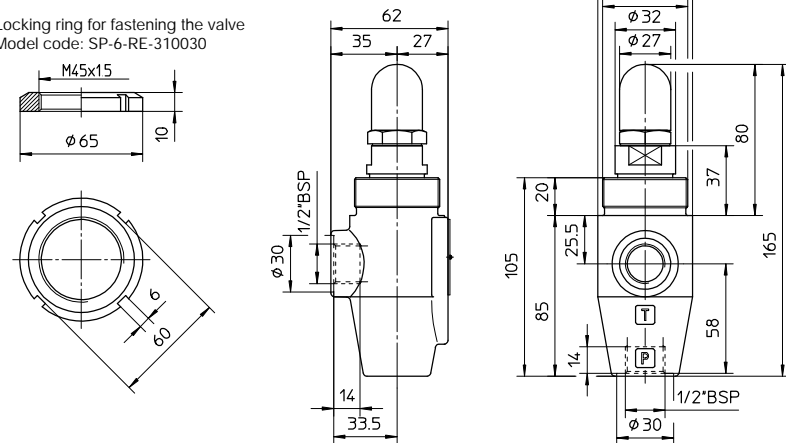


Weight: 1 Kg

**ARE-15**

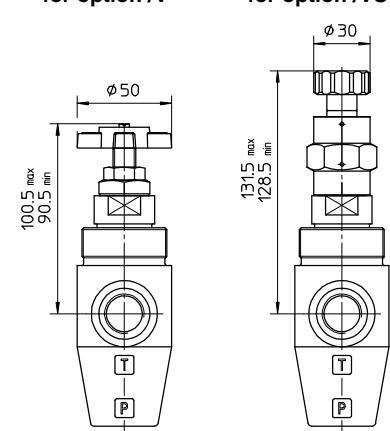
P = INLET PORT 1/2" BSP  
 T = OUTLET PORT 1/2" BSP

Locking ring for fastening the valve  
 Model code: SP-6-RE-310030



Adjustment device for option /V

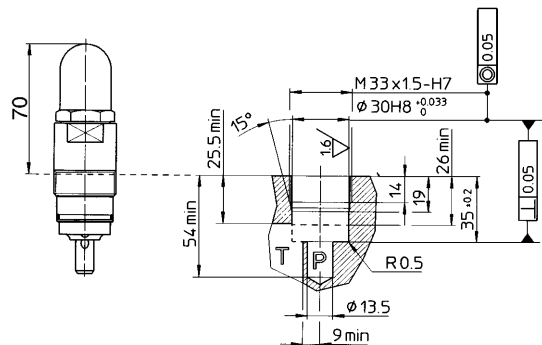
Adjustment device for option /VS



Weight: 1,3 Kg

**6 PRESSURE RELIEF VALVES, DIRECT OPERATED, IN CARTRIDGE EXECUTION FOR INSTALLATION IN MANIFOLDS**

**SP-CART M-6/\*/\*/\* - INSTALLATION DIMENSIONS [mm]**



This cartridge have the same technical characteristics of cartridge type SP-CART ARE-06 (inserted in valves type ARE-06), but it is shaped for simplifying the installation in the manifolds.

**SP-CART ARE-15/\*/\*/\* - INSTALLATION DIMENSIONS [mm]**

