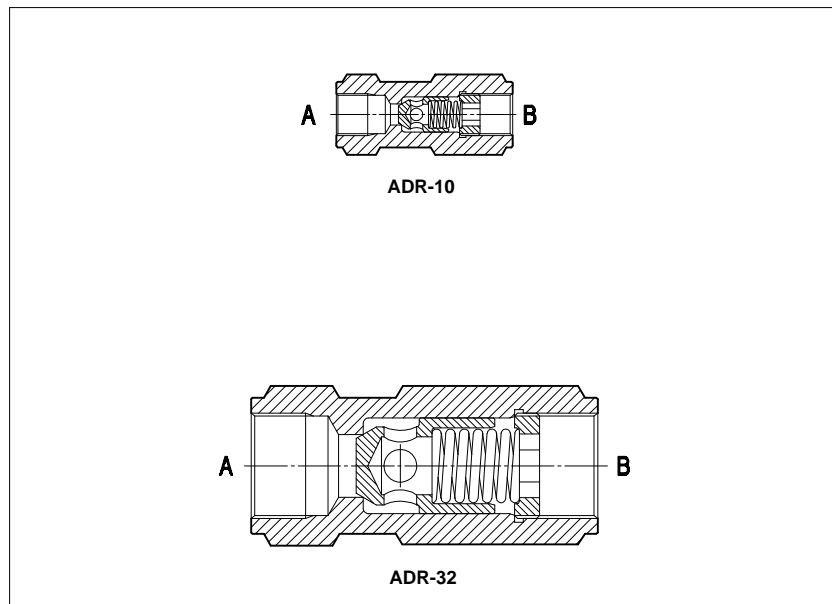


Check valves type ADR

in-line mounting - from 1/4" BSP to 1 1/4" BSP threaded ports



ADR are direct operated check valve for in-line mounting available with port size from 1/4" to 1 1/4" BSP, designed to operate in oil hydraulic systems.

Flow up to 500 l/min.
Pressure up to 400 bar.

1 MODEL CODE

ADR

-

10

/

4

Check valve
in-line mounting

Design number

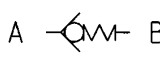
Size/threaded connections:

06 = 1/4" BSP
10 = 3/8" BSP
15 = 1/2" BSP
20 = 3/4" BSP
25 = 1" BSP
32 = 1 1/4" BSP

Cracking pressure:

- = 0,5 bar
/2 = 2 bar
/4 = 4 bar
/8 = 8 bar

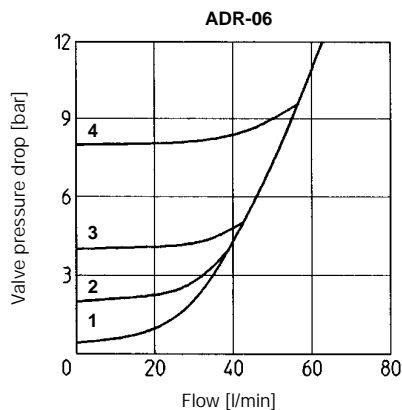
2 HYDRAULIC CHARACTERISTICS

| | | | | | | |
|------------------------------|--|---------------|---------------|---------------|---------------|---------------|
| Hydraulic symbol |  | | | | | |
| Valve model | ADR-06 | ADR-10 | ADR-15 | ADR-20 | ADR-25 | ADR-32 |
| Max recommended flow [l/min] | 40 | 80 | 150 | 300 | 360 | 500 |
| Max pressure [bar] | 400 | | | 350 | | |

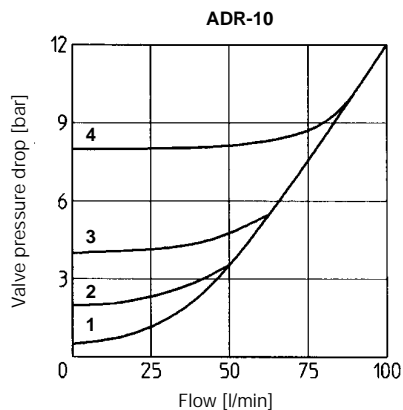
3 MAIN CHARACTERISTICS OF CHECK VALVES TYPE ADR

| | |
|------------------------------|--|
| Assembly position / location | Any position |
| Fluid | Hydraulic oil as per DIN 51524 ... 535; |
| Recommended viscosity | 15 ÷ 100 mm ² /s at 40°C (ISO VG 15 ÷ 100) |
| Fluid contamination class | ISO 19/16, achieved with in line filters at 25 µm value and β ₂₅ ≥ 75 (recommended) |
| Fluid temperature | T ≤ 80°C |
| Flow direction | As shown in the symbol at section 2 |
| Rated flow | See diagrams Q/Δp at section 4 |

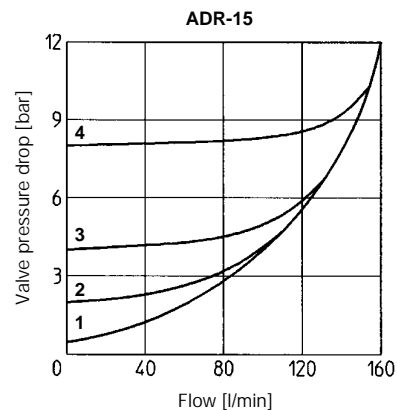
4 FLOW VERSUS PRESSURE DROP DIAGRAMS Based on fluid viscosity of 25 mm²/s at 40°C.



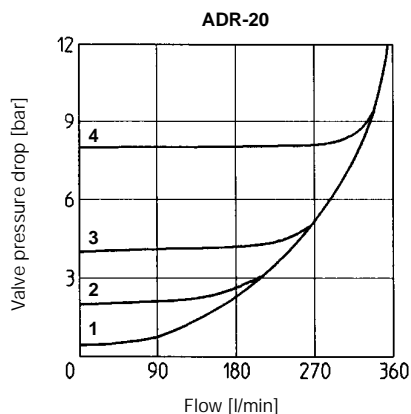
- 1 = ADR-06
- 2 = ADR-06/2
- 3 = ADR-06/4
- 4 = ADR-06/8



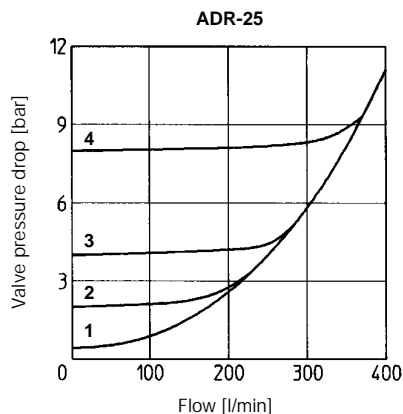
- 1 = ADR-10
- 2 = ADR-10/2
- 3 = ADR-10/4
- 4 = ADR-10/8



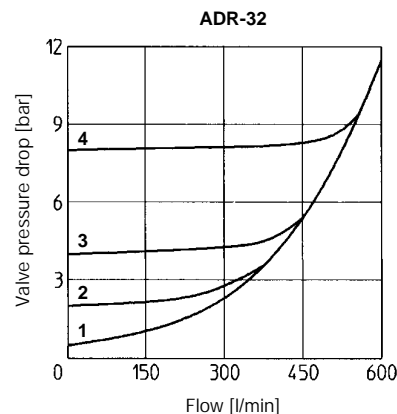
- 1 = ADR-15
- 2 = ADR-15/2
- 3 = ADR-15/4
- 4 = ADR-15/8



- 1 = ADR-20
- 2 = ADR-20/2
- 3 = ADR-20/4
- 4 = ADR-20/8

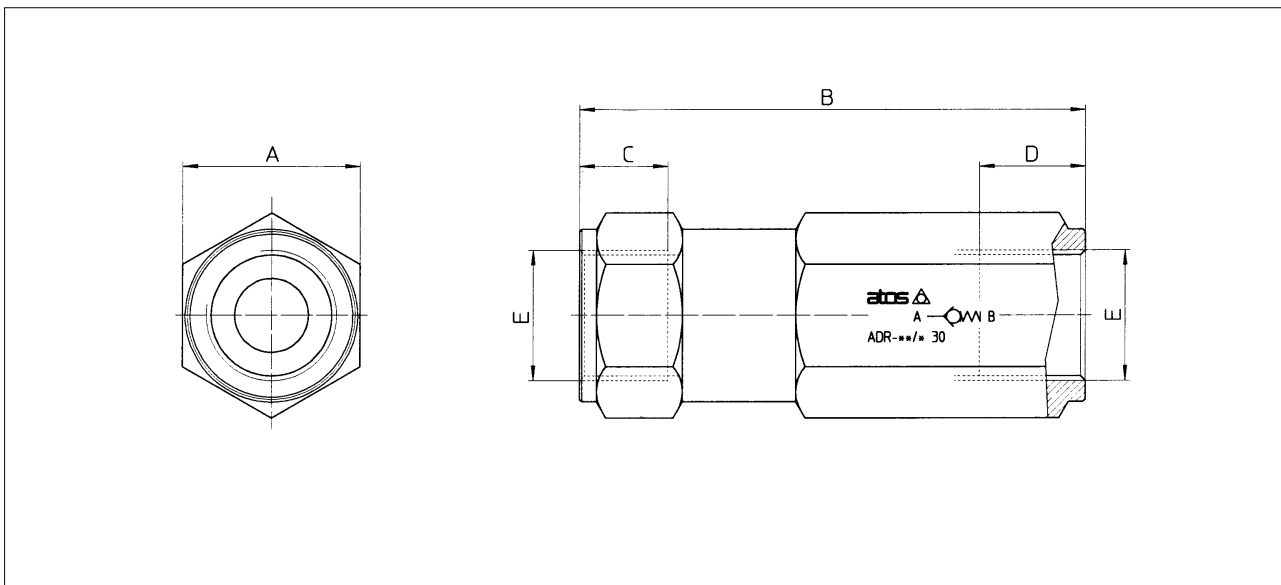


- 1 = ADR-25
- 2 = ADR-25/2
- 3 = ADR-25/4
- 4 = ADR-25/8



- 1 = ADR-32
- 2 = ADR-32/2
- 3 = ADR-32/4
- 4 = ADR-32/8

5 DIMENSIONS [mm]



| Model | A | B | C | D | E | Mass [kg] |
|----------|----|-------|----|------|------------|-----------|
| ADR - 06 | 22 | 67 | 12 | 13 | 1/4" BSP | 0,2 |
| ADR - 10 | 27 | 70 | 12 | 13 | 3/8" BSP | 0,4 |
| ADR - 15 | 32 | 82,5 | 14 | 17 | 1/2" BSP | 0,6 |
| ADR - 20 | 36 | 102,5 | 16 | 21,5 | 3/4" BSP | 0,9 |
| ADR - 25 | 46 | 120 | 18 | 24,5 | 1" BSP | 2,1 |
| ADR - 32 | 55 | 137,5 | 20 | 23 | 1 1/4" BSP | 2,5 |